



Fairfax County Public Schools

FY 2013 Budget and New Schools Opening

New School Buildings Opening in September

Students in three Fairfax County communities are eagerly anticipating the first day of school on September 4. Two new schools, Mason Crest Elementary School in Annandale and South County Middle School in Lorton, will open their doors for the first time. Graham Road Elementary School will move students from the old school location to a redesigned building previously used as an administrative building. All three projects were funded by bonds approved by Fairfax County voters.

Mason Crest Elementary School

Mason Crest Elementary is located at the site of the old Lacey Instructional Center at 3705 Crest Drive in Annandale. Members of the community participated in naming the school which combines the name of the old Masonville school and the Broyhill Crest neighborhood.

"We are excited to already be working with our parents and our community," said Brian Butler, principal at Mason Crest. "Our mission is to ensure high levels of learning for all our students and it will take all of us, parents, teachers, and the community, working together to honor every student."

More than 470 students in grades K-5 are expected to attend Mason Crest. The school will

host programs and services including a Family and Early Childhood Education Program (FECEP/Headstart), advanced academic local level IV services, special education preschool and School-Aged Child Care (SACC).

The two-story building was designed with sustainable and environmentally friendly features including a ground source heat pump, the first one installed in a Fairfax County Public School. The heat pump uses 96 geothermal wells buried 400 feet under the ground to exchange heat to or from water in pipes as it travels to and from the building. Electricity helps move the heat back and forth, but the pump does not burn fossil fuel. This process helps reduce the school's carbon footprint because there are no harmful emissions to the environment.

South County Middle School

South County Middle School was built in one of the fastest growing areas of Fairfax County. It sits on 40 acres of land located at 8700 Laurel Crest Drive in Lorton and was constructed on property obtained from Fairfax County Park Authority.

Many of the students attending the new middle school previously attended South County Secondary School (SCSS), which is adjacent to

the new school property.

"We look forward to keeping many of our SCSS traditions as we create a new identity as a separate middle school," said Marsha Manning, principal of South County Middle School.

The middle school is a two-story building with more than 176,000 square feet. It will have 40 general education classrooms and additional elective rooms for students in grades 7 and 8. By obtaining land from the park authority and using the same design as was used for Glasgow Middle School, FCPS was able to achieve cost savings for the development and design of the project.

The new middle school will be home to state-of-the-art technology and facilities and host an Advanced Academic Level IV Center Program and a program for intellectually disabled students.

"We're thrilled to move into a new building that we will make into our home," said Manning. "We will strive to make every student feel capable, connected, and a contributor at South County Middle School."

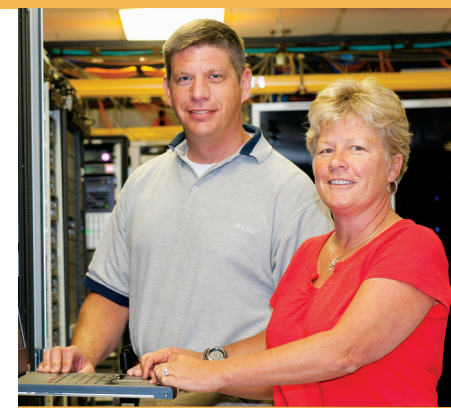
Graham Road Elementary School

Graham Road Elementary is moving to a new location that will increase the school's capacity for more students and provide improved athletic fields and playground facilities. The new location will be at 2831 Graham Road in Falls Church.

In 2008, the Fairfax County School Board decided it would be less disruptive to renovate the administrative center than to renovate the elementary school since students would not be on the campus during the renovation. The new site also offered less traffic congestion, better traffic flow, and an opportunity to keep the Head Start-Family and Early Childhood Education Program (FECEP) together with the K-6 students in one building.

"The opening of our new school building is very exciting for our students, parents, and staff," said Terry Dade, principal at Graham Road. "We are eagerly anticipating the day when the doors officially open and the students' faces light up as they enter a building that is bright and inviting and provides the latest technology and resources to enhance their learning. We sincerely appreciate the community support during this process and we're really looking forward to the first day of school in September."

The renovated building has been transformed with all new interior and exterior finishes, energy efficient windows, and a new roof. In addition, a new HVAC system has been installed along with a new fire alarm and other life safety systems.



Getting To Know Us

IT Operations Cathy Sells

As you watch a building being constructed over time, you notice the concrete being poured, the roof being built, and the windows installed. Each person working on the school building plays a significant role in the process and is relied upon by the whole team.

Opening a new school building requires coordination by a team of skilled professionals, from the areas of design and construction, transportation, food service, human resources, information technology, safety and security, instructional services, special services and many others.

Behind the scenes there is much going on that may not be visible or noticeable. Cathy Sells, director of operations for information technology (IT) at FCPS, works with the entire IT department to ensure that the technology required for a school building is available when and where it is needed.

"Technologies such as network connectivity, voice services, wireless access, data storage, computer equipment, printers, and copiers ensure a contemporary learning environment for 21st century instruction," said Sells.

"Our IT team works very closely with the school principal on the technology plan for the school. Our mission is to provide technology leadership and services to ensure a safe and secure environment for 24/7 learning.

"It is really fascinating to see the coordination of the people involved when we build a new school," she said. "Everyone works together to ensure that the new site will be the best possible place for the students and staff in that community. We all rely on each other and it's one of the best things we do as an organization."



Fairfax County School Board Adopts FY 2013 Approved Budget

The Fairfax County School Board has adopted the Fairfax County Public Schools 2012-13 school year (FY 2013) Approved Budget of \$2.4 billion that includes:

- compensation increases for employees.
- the elimination of student athletic fees.
- more than 700 new positions to address enrollment growth.
- extended learning time for at-risk students.
- the expansion of the World Languages program in elementary schools.
- a phase in of mandated employee contributions to the Virginia Retirement System (VRS).

The FY 2013 Approved Budget is an 8.2 percent increase over the FY 2012 Approved Budget. For more information visit www.fcps.edu and click on FY 2013 Budget.



www.AppleFCU.org
703-788-4800



CELEBRATE
PARTNERSHIPS



2011 BUSINESS PARTNER OF THE YEAR

This year's *State of Schools Report* courtesy of Apple Federal Credit Union