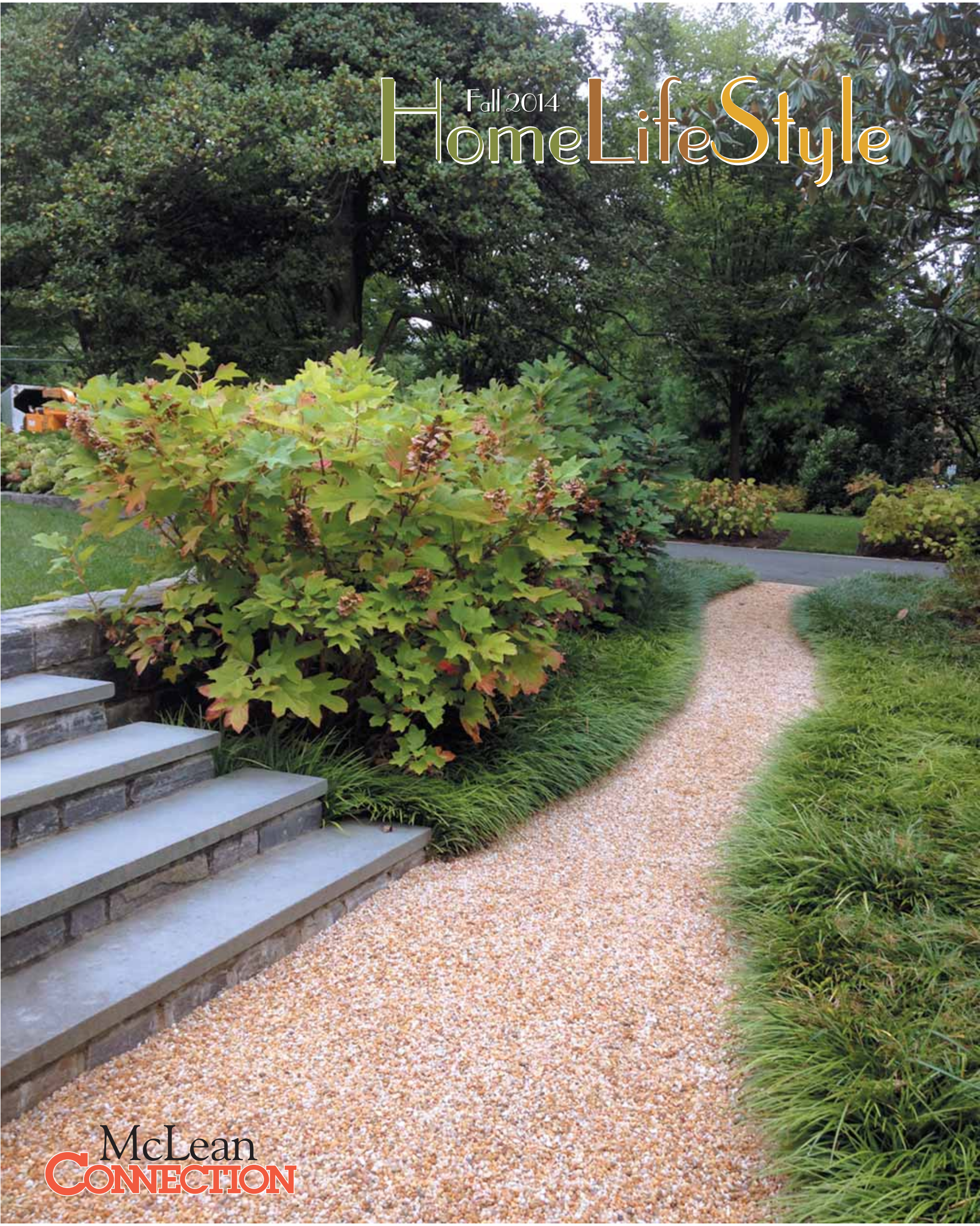


# Fall 2014 HomeLifeStyle



COURTESY OF KATIA COFFIN GARDENS

McLean  
**CONNECTION**

LOCAL MEDIA CONNECTION LLC

ONLINE AT [WWW.CONNECTIONNEWSPAPERS.COM](http://WWW.CONNECTIONNEWSPAPERS.COM)

# Neighbors Helping Neighbors

## Clifton residents to hold tour of remodeled homes to benefit widow.

Neighbors help each other. That's what communities have always been about. Long-time Clifton resident Bob Gallagher is rallying his friends and peers to help his neighbor Elsa Armendaris.

Armendaris, a mother of seven, needs funds to repair the badly deteriorated driveway to her home, which is also a local day care center. To help out, Gallagher, who is a principal at Sun Design Remodeling, has organized a tour of three newly remodeled Clifton homes, each the handiwork of a different remodeler.

"The homes are all pretty spectacular in

their own right," Gallagher says. "We've found that homeowners really enjoy seeing what their neighbors are doing. But this is also about helping a local person in need; that's the sense of community which Clifton has always exemplified."

In addition to showcasing a home recently renovated by Sun Design Remodeling, the tour will feature recent work by Daniels Design and Remodeling and Kohlmark Group Architects and Builders, all active in Clifton and environs for years.

Tim Reed of Tibbs Paving will be donating the labor, equipment and trucking needed for the driveway re-paving.

A native of El Salvador, Armendaris lost her husband, David, to leukemia six years ago and, as the sole means of her family's support, decided to set up her home as a day care center.

Since it was convenient to nearby Clifton Elementary, parents would leave their children with Armendaris before and after school. But when Clifton Elementary closed in 2010, the day care center lost more than half its students. Not long after that, the winding asphalt driveway leading to the house began to seriously deteriorate.

That's when her friend, Christina Gallagher, whose children had attended the

day care center, offered to ask her husband, Bob, for ideas.

"I just thought there must be a way that a community as old and close-knit as Clifton could help one of its own," said Bob Gallagher, who grew up in Clifton where his father practiced medicine. "My company has learned a lot from doing our own home tours, so a coalition of remodelers already active in Clifton seems like a logical way to reach out to the community."

Remodeler's Charity Home Tour, Nov. 15, 10 a.m.-4 p.m. Visit [www.RemodelersCharityHomeTour.com](http://www.RemodelersCharityHomeTour.com) or call 703-425-5588 for more.

# October is FREE WINDOWS MONTH at Renewal by Andersen.<sup>1</sup>



### Why is October one of the best times to replace your windows?

Because if you call us now, you can get your more energy-efficient windows installed **before** the really cold weather is here.

Our exclusive High-Performance Low E-4® SmartSun™ glass is **up to 70% more energy efficient<sup>†</sup>**. It's engineered to make your home more comfortable in the colder months.

Call before October 31st!



### Why have our customers chosen us over another window company?

#### 1. Fibrex® Material

Our exclusive Fibrex material was **researched by Andersen** for 30 years before it was installed in even one home. **Our Fibrex material is twice as strong as vinyl.**

#### 2. Unique Look

Our window has the **elegant look and strength of a wood window**, but our Fibrex material doesn't demand the same maintenance of wood.

#### 3. Accountability

There's no frustrating "middle man" to deal with. **We sell, build, install and warrant both our windows and installation.**

It's like getting  
**FREE WINDOWS**  
for 1 year<sup>1</sup>

**NO** MONEY DOWN

**NO** PAYMENTS

**NO** INTEREST  
FOR 1 YEAR<sup>1</sup>

Plus

**SAVE \$229**  
on every window<sup>1</sup>

and

**SAVE \$629**  
on every patio door<sup>1</sup>

Offer only available as part of our Instant Product Rewards Plan.

**Renewal by Andersen.**  **WINDOW REPLACEMENT** an Andersen Company

Call for your **FREE Window Diagnosis**

**703-775-2256**

Restrictions and conditions apply; see your local representative for details. Cannot be combined with prior purchases, other offers, or coupons. No adjustments to previous orders. Offer not available in all areas. Discount applied by retailer representative at time of contract execution and applies to minimum purchase of 6 or more windows and 4 or more patio doors. Offer does not include bay/bow windows or any upgrades considered non-standard options. Offer only available as part of our Instant Product Rewards Plan. As part of the Instant Product Rewards Plan, all homeowners must be present and must purchase during the initial visit to qualify. To qualify for discount offer, initial contact for a free Window Diagnosis must be made and documented on or before 10/31/14 with the appointment then occurring no more than 10 days after the initial contact. 0% APR for 12 months available to well-qualified buyers on approved credit only. Not all customers may qualify. Higher rates apply for customer with lower credit ratings. Financing not valid with other offers or prior purchases. No Finance Charges will be assessed if promo balance is paid in full in 12 months. Renewal by Andersen retailers are independently owned and operated retailers, and are neither brokers nor lenders. Any finance terms advertised are estimates only and all financing is provided by third-party lenders unaffiliated with Renewal by Andersen retailers, under terms and conditions arranged directly between the customer and such lender, all subject to credit requirements. Renewal by Andersen retailers do not assist with, counsel or negotiate financing, other than providing customers an introduction to lenders interested in financing. This Renewal by Andersen location is a independently owned and operated retailer. VA Lic # 27010307644, DC Lic # 420212000031. "Renewal by Andersen" and all other marks where denoted are marks of Andersen Corporation. ©2014 Andersen Corporation. All rights reserved. ©2014 Lead Surge LLC. All rights reserved. <sup>†</sup>Values are based on comparison of Renewal by Andersen® double-hung insert window SH6C to the SH6C for clear dual-pane glass non-metal frame default values from the 2006 and 2009 International Energy Conservation Code.

## The Family That Plays Together ... Needs New Space

Innovative Great Falls solution with art studio meets needs of three generations.

BY JOHN BYRD

“A home is a machine for living in,” architectural pioneer Eduard LeCorbusier said in the 1930s, by which he meant good residential design should meet current lifestyle requirements, yet retain enough flexibility to readily transition into a place that supports newly arising needs.

Design consultant Mindy Mitchell, concurs on some basic principles.

“You want a solution that fully responds to everyday needs,” Mitchell says. “But it’s also useful to consider how you might be re-using key spaces from time to time, or even a decade from now.”

This may be especially true in a “creative” household, Mitchell adds, where the goal is fostering an environment that organically responds to all sorts of overlapping projects.

Case in point: the recently re-invented lower level plan to the Great Falls home of Lesley and Tim Hackman, two long-term residents now actively involved in the community’s burgeoning art scene.

Looking around the sunny family play space, which will be featured in the upcoming remodeling home tour Oct. 17-19, it’s a little hard to imagine that last year the Hackmans were scarcely using the suite at all.

Recently retired, Tim was free from professional obligations. The couple’s two



PHOTO COURTESY OF MITRO HOOD

**In the newly designed family entertainment area, a wall-sized console with a flat screen television stretches out in front of an L-shaped “viewing” couch. A fully stocked beverage center is on the opposite wall convenient to an outside patio.**

daughters were out of the house, raising families of their own. Like most empty-nesters, the Hackmans were idly wondering how to better use a spacious home designed for past needs.

“We had been talking about upgrading some rooms, but weren’t using the lower level for much more than laundry and storage,” Lesley recalls. “All the light in the entire suite originated from windows and doors on the rear [side of the house], so the interior rooms were too dark. Still, we hadn’t gotten too far into an actual plan.”

Then an unexpected turn brought latent remodeling considerations to the fore: last spring the entire lower level was flooded by three inches of water when a sump pump failed; it was a situation that could not be ignored.

“One way or another, we knew we were

going to have to do something about it,” Lesley said.

A professional organizer as well as a space planner, Mitchell has been working with Sun Design Remodeling for close to a decade.

“I’m generally the point person and *de facto* project manager,” Mitchell said. “My job is to help owners get a clear idea of what they’re looking for so that the design process is focused and on-track from start to finish.”

This is especially critical, Mitchell notes, when the makeover needs to satisfy a diverse agenda.

Lesley wanted functional studio space for her quilting and photography, but she had also decided to babysit two of her grandchildren three days a week, a commitment that would require work stations for arts

### Details

Visit the Hackmans’ remodeled lower level during the Great Falls Studio Tour, Friday-Sunday, Oct. 17-19, 1-5 p.m. daily. Visit [greatfallsstudios.com/tour.php](http://greatfallsstudios.com/tour.php) or [www.SunDesignInc.com](http://www.SunDesignInc.com) or call 703-425-5588.

and crafts projects as well as kitchenette suitable for the occasional cooking lesson.

They wanted a media center large enough for the extended family (both daughters live in the metro area), and places to prepare and share a meal with easy access to an adjacent outdoor patio and backyard barbecue.

On an entirely different note, the lower level still had to perform its duties as the family laundry room. And it should also provide quarters for the occasional sleep-over guest.

“It’s when an agenda becomes more specific that space planning really needs to be thoughtful and precise,” Mitchell says. “In this case, we sought ideas that would give every lifestyle component its own integrity while also allowing for modular adjustments where needed.”

The existing full bath is enlarged and upgraded into something suitable for overnight guests while one wall of the studio now accommodates a handsome custom cabinet that conceals a comfortable Murphy bed.

The redesigned “all purpose room” (laundry/kitchenette/dining table) now features a full-sized refrigerator, microwave and dishwasher. The washer and dryer are entirely out-of view behind paneled doors.

The great room on the lower level’s south-

SEE THE FAMILY, PAGE 4

## Planting for Fall *Planning your autumn garden and yard.*

BY MARILYN CAMPBELL  
THE CONNECTION

As the first few weeks of fall unfold, carrying with them the promise of rich and vibrant colors, many local residents are starting to plan their fall gardens, both ornamental and edible. Pruning and overall garden cleanup will make way for fall plants. In fact, this is the perfect time to clear away summer foliage and plant, horticulture gurus said.

“Because the ground is still warm and air is cool, there is less transplant shock for plants when you take them out of the con-

tainer to plant them,” said Kelly Grimes of Good Earth Garden Market in Potomac, Md. “Now is a great time to put in a landscape.”

The first step is preparing the ground. “You have to amend the soil; that is mixing in compost and soil so the plants’ roots can grab a hold of the soil with compost,” said Grimes. “That really helps any planting.”

Katia Goffin of Katia Goffin Gardens in McLean, Va., likens planning a garden to putting together a puzzle. “Everything has to [look] like it belongs,” she said. “It’s about designing your bed line so it enhances your property, versus ‘I stuck this in my garden and doesn’t it look good?’”

Take a few minutes and actually plan out your garden because no matter what you decide to plant for fall, an aesthetically appealing garden starts with an effective strategy. “It is getting a good plan together,” Goffin said. “It is a question of scale and putting it together right. You have to look at your plot of land and decide where you want plants to go and how you want it to look.”

**FOR DECORATIVE GARDENS** and yards, mums and pansies are among fall’s

SEE PLANTING, PAGE 11

MCLEAN CONNECTION ♦ HomeLifeStyle Fall 2014 ♦ 3

# The Family That Plays Together ...

FROM PAGE 3

western corner is set up for family entertainment. There's a beverage center with a wine refrigerator in one corner. On the opposite side of the room, a wall-sized console with a flat screen television stretches out in front of an L-shaped "viewing" couch.

The new family room now segues down an adjoining hall into Lesley's new studio (formerly the unused guest room) which is also accessed from the "all purpose room" through a pair of frosted glass doors designed to maximize available light from the rear elevation.

"As a functional measure, we designed a series of shelves to hold on-going projects, Mitchell said. "But they're all neatly tucked inside custom cabinetry, which means the studio can easily transition into a comfortable and private guest room when necessary."

**UPSTAIRS**, the program called for fully upgrading the master bath and an adjacent hall bath. The master bath features a walk-in shower with a glass surround and granite surfaced whirlpool bath that affords a restful view of the backyard tree tops.

Lesley Hackman says the makeover has proven to be a perfect solution in this newly active phase of her life.

"I can spend the morning or afternoon working on art projects and helping the grandchildren. Then take a hot bath. It's a great environment," she said. "I'm really glad we created it."

*John Byrd has been writing about residential architecture, building and remodeling for 30 years.*

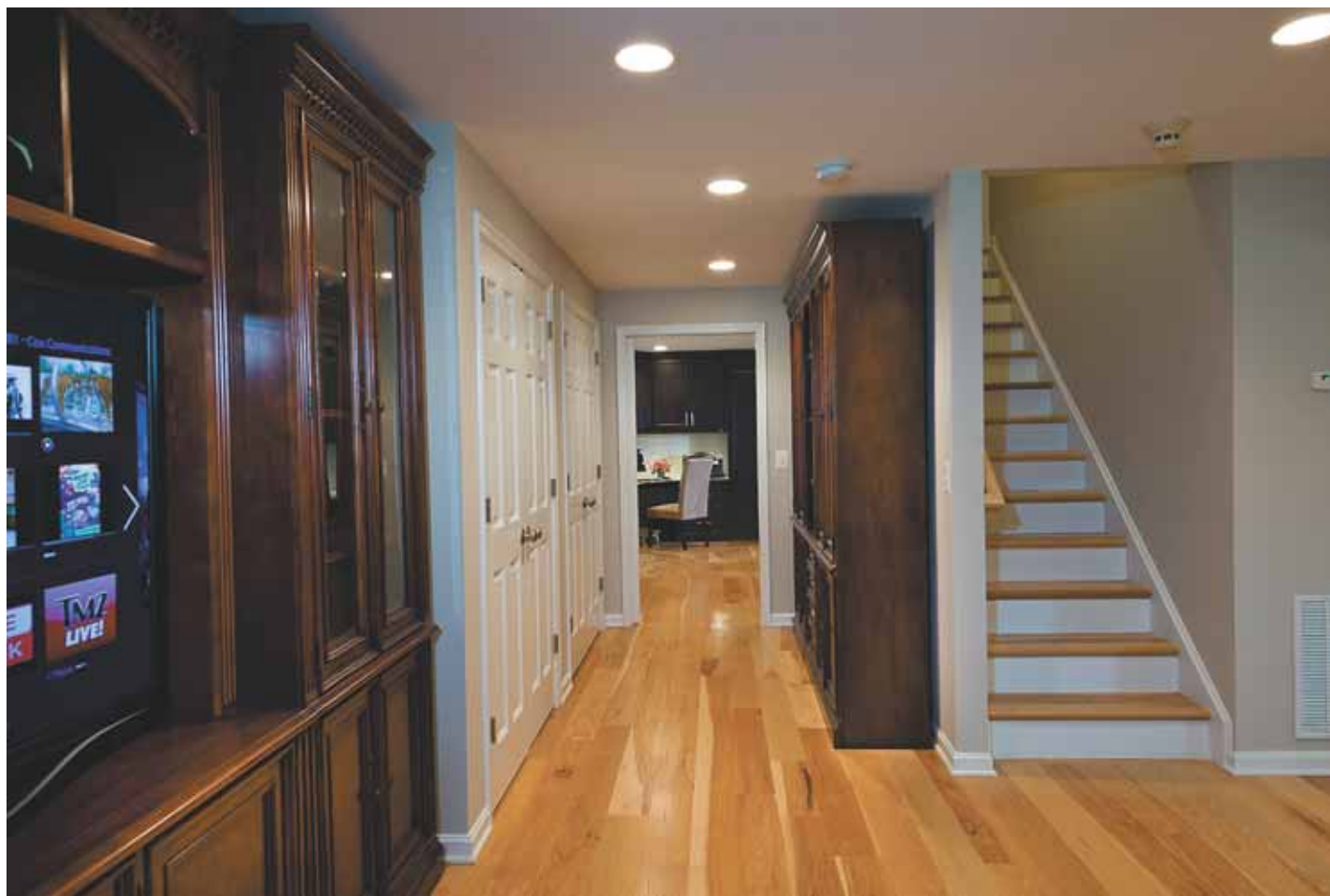


PHOTO COURTESY OF MITRO HOOD

**The stairway from the upper level opens directly into the media center. Lesley's studio is down the hall. Sun Design's Mindy Mitchell, who is also a professional organizer, was instrumental in designing a space with ample storage that's easy to maintain.**



PHOTO COURTESY OF MITRO HOOD

**The redesigned "all purpose room" now features a full-sized refrigerator, microwave and dishwasher. Among other functions, Lesley Hackman uses the space to instruct her grandchildren in cooking.**



PHOTO COURTESY OF MITRO HOOD

**The suite's comfortable Murphy bed is concealed inside a custom cabinet. The room works as a guest accommodation when required.**



PHOTO COURTESY OF MITRO HOOD

**Lesley uses her studio for quilting, photography and other art projects. Mindy Mitchell designed a cabinet system that keeps works-in-progress out of view except when the creative process is actively underway.**

# Needs New Space



PHOTO COURTESY OF MITRO HOOD

The upgraded master bath features a walk-in shower with a glass surround and a granite-surfaced whirlpool bath that affords a restful view of backyard tree tops.



## We'll *Clean.* You *Enjoy* your Free Time.

- ✓ Bonded, Insured & Praised!
- ✓ Flexible Scheduling
- ✓ HEPA Vacuums Remove 4X Allergens & Pollen
- ✓ Trusted since 1989
- ✓ A+ BBB Rating



\$50 Off!

\$25 OFF + \$25 OFF

YOUR 1st VISIT    YOUR 3rd VISIT

New clients only. Some restrictions apply. Expires 1-31-15. PROMO CODE: CONNEWSHL1014






Trusted House Cleaners for over 25 Years!

Call: 888.612.9840

maidbrigade.com



## LUXURY REMODELING SEMINARS

**Considering a luxury renovation? Then register today!** BOWA specializes in luxury renovations ranging from master suites and kitchens to whole-house and whole-condo remodels. For over 25 years, our design build experts have been guiding clients from their first thoughts of the project, throughout architecture and construction, and continuing through a lifetime of ownership. Now is your chance to visit our McLean Design Center and learn from BOWA's team of experts.



### THREE DATES AVAILABLE:

October 18 (10am until Noon)

November 1 (10am until Noon)

December 6 (10am until Noon)

THE 7 QUESTIONS YOU  
NEED TO ASK FOR  
LUXURY REMODELING  
SUCCESS

HOW TO AVOID  
COMMON KITCHEN  
REMODELING  
PITFALLS

THE 7 QUESTIONS YOU  
NEED TO ASK FOR  
LUXURY REMODELING  
SUCCESS

Register today to join BOWA's Design Build Experts for an informative presentation and *Ask the Experts* session.

Seating is very limited for these exclusive events.

RSVP to 703-873-8005 or [bowa.com/events](http://bowa.com/events)

  
 Transforming Houses *into* Homes

[www.bowa.com](http://www.bowa.com)



**OCTOBER 17-19, 2014**  
**10:00am to 5:00pm**

Join us on  
 a driving  
 adventure to  
 art studios  
 hidden on the  
 back roads  
 of Great Falls,  
 Virginia.  
 Meet 49 artists.  
 Rain or Shine.

**IT'S FREE!**

**3**  
 DAYS  
 THIS  
 YEAR!

ELEVENTH ANNUAL  
 Great Falls Studios  
**ART  
 TOUR**

www.GreatFallsStudios.com



The tour is sponsored by Sun Design Remodeling Specialists, which will hold an open house at a Great Falls home it has renovated. Stop by to get new ideas from their creative staff to reimagine your home.

**SUN DESIGN**  
 Design. Remodel. Relationships.

**THE MAP**

The Studios. The numerals in the red squares correspond to the number given to each studio. The numbers run roughly from west to east and north to south on the map. At right, you will find an alphabetical listing of the artists by medium, and the number of each artist's studio. These numbers will also be found on the road sign nearest the studio. Wheel chair access is marked with a wheelchair icon, hands-on activities marked with a hand icon.

Sun Design venue. The yellow-and-brown sun icon corresponds to a location where Sun Design is showcasing home renovations. Join Sun Design and Children's Author and Homeowner, Lesley Hackman for a remodeled home tour, 735 Forest Park Road.

**THE ARTISTS**

Studio Tour Headquarters #12

**Digital Artists**

- Walt Lawrence.....#19
- Terri Parent.....#19

**Fiber Artists**

- Dory Emmer.....#26
- Cindy Grisdela.....#19
- Vad Moskowitz.....#3

**Jewelry Designers**

- Jorge Adeler.....#15
- Donna Barnako.....#19
- Richard Masaniello.....#26

**Layered Paper Artist**

- Ronni Jolles.....#19

**Mixed Media Artists**

- Roberta Pruett Beasley.....#19
- Penny Burk.....#21
- GuruSangat Khalsa.....#20
- Heidi Mraz.....#10

**Painters**

- Naz Akbar.....#13
- Leslie Anthony.....#14
- Jill Banks.....#19
- Karen Bateman.....#9
- Hwa Crawford.....#18
- Coty Dickson.....#14
- Jennifer Duncan.....#17
- Elaine Elmsky.....#19
- Robert Gilbert.....#24
- Lori Goli.....#11
- Layla Gray.....#14
- Yeganeh Hejazi.....#19
- Carol Howard.....#19
- Yiyun Huang Huff.....#7
- Linda Jones.....#26
- Tina Learned.....#19
- John McCabe.....#19
- Begonia Morton.....#4
- Pat Neuman.....#8
- Ann Noel.....#11
- Vandana Pamecha.....#25
- Gail Pean.....#14
- Jay Pigeon.....#11
- Lockini Rumburg.....#1
- Judith St. Ledger-Roty.....#19
- Lisa Tureson.....#19

**Photographers**

- Jan Bender.....#2
- Robin Kent.....#22
- Dee Leggett.....#11
- Silvia Gonzalez Roman.....#18
- Dean Souleles.....#23

**Potters**

- Barbara Gatterdam.....#16
- Laura Nichols.....#9

**Printmakers**

- William Tutthill.....#6

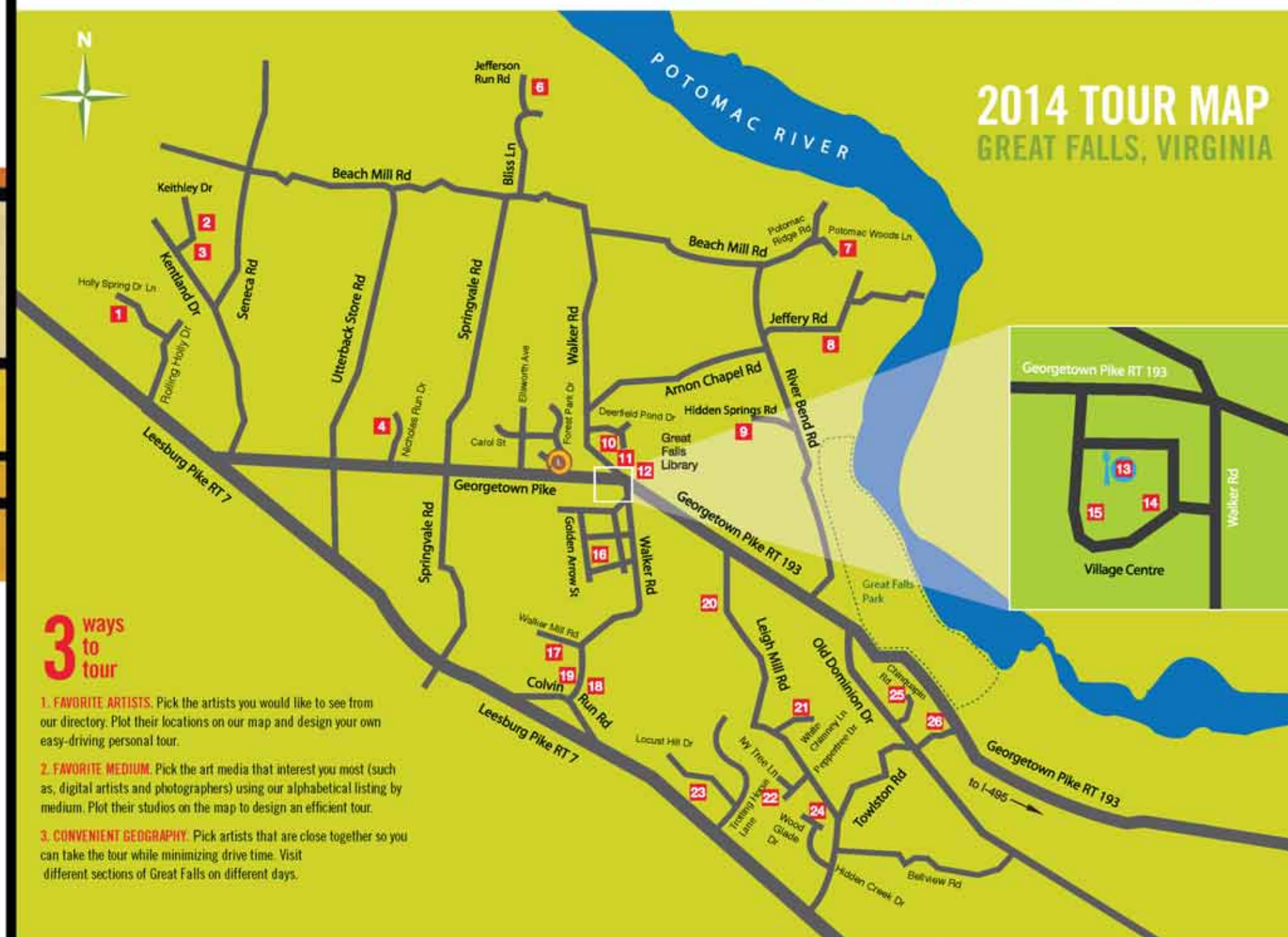
**Wood Carver**

- Michael Long.....#20

Great Falls School of Art.....#19

The Old Brogue.....#13

Most artists are open for all 3 tour days. Refer to the full brochure available at all studios for exceptions.



**3**  
 ways  
 to  
 tour

- 1. FAVORITE ARTISTS.** Pick the artists you would like to see from our directory. Plot their locations on our map and design your own easy-driving personal tour.
- 2. FAVORITE MEDIUM.** Pick the art media that interest you most (such as, digital artists and photographers) using our alphabetical listing by medium. Plot their studios on the map to design an efficient tour.
- 3. CONVENIENT GEOGRAPHY.** Pick artists that are close together so you can take the tour while minimizing drive time. Visit different sections of Great Falls on different days.

# Fireplaces Can Warm Outdoor Rooms

Tips for making your outdoor spaces comfy through the fall.

BY MARILYN CAMPBELL  
THE CONNECTION

As the air turns crisp and we settle into fall, the time is ideal for creating a cozy setting, whether it's elegant or rustic or modern. Many people have adapted part of their landscape as an outdoor room.

"Outdoor porches whether screened or just covered with a roof are great fall spaces," said Susan Matus, a Potomac, Md.-based architect. "One can cozy them up with pillows and throws and outdoor lights, such as decorative twinkle lights or candles can create great ambiance."

Local designers reveal their favorite accessories and ideas for outdoor rooms and screened porches to help welcome the new season with style.

An outdoor fireplace commands attention and can offer a warm place for reading, napping or chatting with friends, and makes it comfortable to sit outside on a chilly evening.

"I just built a stunning fireplace in a screened-in porch that transformed the space into a three-season room just in time for fall," said Robert Kalmin of Skill Construction and Design, LLC in Fairfax, Va. "Indoor-outdoor rugs and seating in fall colors make the space great for entertaining."

When it comes to outdoor fireplaces, however, there are a few caveats: "If it is a screened in porch, be careful of your ventilation. Whether you have a gas or wood-burning fireplace you have to have noncombustible material for the mantle and it needs to back discharge for smoke," said Kalmin. He says such fireplaces can be added to an



PHOTO COURTESY OF SKILL CONSTRUCTION AND DESIGN, LLC

**Whether it's in an outdoor room or a screened-in porch, a fireplace commands attention and can offer a warm place for reading, napping or chatting with friends.**

existing space in one-to-two weeks.

Accessories in warm, vibrant colors can help transform an outdoor room from summer to fall. "Adding some cozy throw blankets to outdoor sofas allows you to stay outside on chilly nights," said Kerra Michele Huerta of Apartment Envy. "Also, as it gets darker and cooler earlier in the day, candles are a perfect accessory, adding both warmth and light."

Scented candles can add an aroma of fall. "There are fabulous new pumpkin scented candles by Nast Fragrance of New York that are wonderful," said John Brown of J. Brown & Co. in Old Town Alexandria, Va.

In fact, lighting can transform a screened porch or outdoor room. "To a screened

porch, you can add a ceiling fan with a down light and an up-light," said Kalmin. "The higher light can give you general lighting and the lower lights can create ambient lighting, and can be moved in different directions for setting a mood. There is also a mono-rail track system lighting, where you can install different types of lights depending on the mood you want to create."

**"Indoor-outdoor rugs and seating in fall colors make the space great for entertaining."**

— Robert Kalmin of Skill Construction and Design

Whether real or faux, fall produce can also add a seasonal touch to an outdoor room or screened porch, particularly on the mantle or around the hearth. "You can add faux pumpkins, gourds and berries," said Brown. "Squirrels don't like the taste of those."

Don't forget serve wear, particularly when entertaining. "There are trays to carry coffee, tea, dessert in fall colors with fall leaves and birds with pumpkins," said Brown.

Matus suggests a finishing touch for outdoor spaces. "Another option is to hang drapery to create not only a more interior feeling but also drapery can be used to shield from the wind as a thermal barrier," she said.



PHOTO COURTESY OF J. BROWN & CO

**Pumpkins, gourds and other fall produce can also add a seasonal touch to an outdoor room or screened porch.**



PHOTO COURTESY OF SKILL CONSTRUCTION AND DESIGN, LLC

**Lighting can transform a screened porch or outdoor room.**

# Home LifeStyle

## On the Great Falls Studio Art Tour ...

Painter Leslie Anthony, a member of Artists on the Green, specializes in paintings of horses and dogs. Bring in a photo of your pet during the Great Falls Studios 2014 Studio Tour Oct. 17-19, 2014 and she might paint it. Anthony is one of 50 artists whose work you can see on the tour.



Visit [www.greatfallsstudios.com/tour/php](http://www.greatfallsstudios.com/tour/php)



## Jewel Box Gardens by Suzanne

**Townhouse garden design  
and installation**

*Make your garden  
dreams come true!*

**FREE CONSULTATION**

[www.jewelboxgardensbysuzanne.com](http://www.jewelboxgardensbysuzanne.com)  
[jewelboxgardensbysuzanne@gmail.com](mailto:jewelboxgardensbysuzanne@gmail.com)



## LOUDOUN HISTORIC HOMES

OATLANDS



**Historic House & Gardens**

Discover ...

**THE HISTORIC ESTATES  
of Loudoun County**

Take advantage of a Comfort Suites/ Leesburg special discount package and spend a weekend exploring all three homes plus nearby vineyards, outlet shopping, and outstanding restaurants.

MORVEN



**Park Governor's Mansion**

GEORGE C.



**Marshall House**



Visit [LoudounHistoricHomes.org](http://LoudounHistoricHomes.org) for tour hours and additional information.

VISIT LOUDOUN 

## You Can Make a Difference





Cats benefit from being in a foster home. We need long- and short-term fosters for cats of all ages, mothers with litters and kittens on their own.



## Consider Fostering

visit our website, click on Participate

Adopt/Donate/Volunteer at [www.lostdogrescue.org](http://www.lostdogrescue.org)

McLEAN COMMUNITY PLAYERS  
KEN LUDWIG'S

# THE GAME'S



FINAL WEEKEND!

MURDEROUSLY FUNNY!

## AFOOT

OR HOLMES FOR THE HOLIDAYS

ALDEN THEATRE, McLEAN COMMUNITY CENTER  
**OCTOBER 10-12**  
FRIDAY & SATURDAY 8:00 P.M.  
SUNDAY MATINEE ON OCTOBER 12 AT 2:00 P.M.  
TICKETS 866.811.4111 OR [MCLEANPLAYERS.ORG](http://MCLEANPLAYERS.ORG)

Through a cooperative agreement with the Washington Metropolitan Ear, audio description services for individuals with vision challenges will be offered at the October 11 performance. THE GAME'S AFOOT, OR HOLMES FOR THE HOLIDAYS IS PRESENTED BY SPECIAL ARRANGEMENT WITH SAMUEL FRENCH, INC.

Join the McLean Players' Facebook Group

WWW.CONNECTIONNEWSPAPERS.COM

McLEAN CONNECTION ♦ HomeLifeStyle Fall 2014 ♦ 9



PHOTOS BY CRAIG STERBUTZEL/  
THE CONNECTION

# Local REAL ESTATE

## August, 2014 Top Sales in Great Falls and McLean



1 9410 Piscataway Lane,  
Great Falls — \$6,188,600

2 839 Whann Avenue,  
McLean — \$4,200,000



3 926 Douglass Drive, McLean — \$4,089,825



5 866 Centrillion Drive,  
McLean — \$2,550,000



4 1266 Lyons Street,  
Great Falls — \$2,750,000



8 1088 Mill Field Court, Great Falls —  
\$2,750,000

Address	BR	FB	HB	...	Postal	City	Sold Price	Type	Lot AC	Postal Code	Subdivision	Date Sold
1 9410 PISCATAWAY LN	6	8	4	...	GREAT FALLS	..	\$6,188,600	Detached	7.97	22066	BRANDES ESTATES	08/25/14
2 839 WHANN AVE	6	6	2	...	MCLEAN	....	\$4,200,000	Detached	1.45	22101	LANGLEY FOREST	08/15/14
3 926 DOUGLASS DR	6	6	3	...	MCLEAN	....	\$4,089,825	Detached	1.00	22101	LANGLEY FOREST	08/22/14
4 1266 LYONS ST	8	8	3	...	GREAT FALLS	..	\$2,750,000	Detached	1.30	22066	KENMORE	08/18/14
5 866 CENTRILLION DR	5	7	1	...	MCLEAN	....	\$2,550,000	Detached	1.07	22102	GARFIELD PARK	08/26/14
6 1011 BRYAN POND CT	5	5	2	...	MCLEAN	....	\$2,350,000	Detached	2.24	22102	BRYAN POND	08/22/14
7 1053 AUTUMN MIST LN	5	6	2	...	GREAT FALLS	..	\$2,258,686	Detached	0.88	22066	AUTUMN WOOD	08/22/14
8 1088 MILL FIELD CT	6	5	2	...	GREAT FALLS	..	\$1,725,000	Detached	0.88	22066	COLVIN MILL RUN	08/01/14

COPYRIGHT 2014 REAL ESTATE BUSINESS INTELLIGENCE. SOURCE: MRIS AS OF SEPTEMBER 15, 2014.

# Planting for Fall

FROM PAGE 3

best flowering plants. “Mums need full sunlight to open and come in obvious, bold fall colors,” said Grimes. “Pansies will take part sun, are a great color and will continue to bloom through spring.”

Yarrow, asters, sedums, Lenten roses, and coral bells are among the fall plants that Jonathan Storvick, natural resource manager at the Office of Sustainability at George Mason University in Fairfax, Va., recommends.

“Fall is a great time to plant larger-sized perennials and container shrubs,” said Storvick. “It also happens to be the time of year when nurseries are trying to get rid of a lot of their stock, so you can find some great deals.”

For example, said Joel Cook of Merrifield Garden Center, in Fairfax, Merrifield and Gainesville, Va., “Burning bushes have beautiful fall colors like orange and fire red. As far as trees, maples like Japanese maples, sugar maple or black gum maple have beautiful colors.”

**“Because the ground is still warm and air is cool, there is less transplant shock for plants when you take them out of the container to plant them. Now is a great time to put in a landscape.”**

— Kelly Grimes of Good Earth Garden Market in Potomac, Md.

Another eye-catching option is the yellow twig dogwood. Its “bright yellow branches and twig color ... are also fantastic for winter,” said Mark White of GardenWise in Arlington, Va. “This shrub develops in great clumps and is a wonderful contrast against any red twig. Oval-shaped green leaves turn to orange-red in fall, followed by white fruit tinged with green.”

Grasses, added Katia Goffin, are ideal for fall and can be mixed with other foliage. “You can put evergreens in your yard and add some grasses. There are tons [of grasses] that are flowering and look [good] with evergreens.”

One plant that is often associated with cooler weather is a holly tree, but Eric Shorb of American Plant in Bethesda, Md., offers a caveat. “As we get closer to the end of November and the beginning of December you want to be careful about planting such broadleaf evergreens,” he said. “If they haven’t had time to develop a sufficient enough root system they can become susceptible to wind burn because the roots will not be able to absorb moisture.”



PHOTO COURTESY OF KATIA GOFFIN GARDENS

**Katia Goffin suggests mixing grasses with evergreens when planning a fall yard.**

Instead, he recommends deciduous trees and fine leaf evergreens. “A Leland Cypress or an Arborvitae that don’t need as much moisture will survive better as the weather gets colder.”

**ORNAMENTAL VEGETABLES** also work well in fall and beyond. “There is decorative cabbage and kale, which will grow anywhere and are deer resistant, which is a big factor these days,” said Grimes. “As the temperatures get cooler, they get more color and last in winter.”

Then there are the edible vegetables. Good options are spinach, Swiss chard, arugula, mustard greens and red lettuces, said Storvick, who also suggested “root crops [like] carrots, radishes, parsnips and beets. You can also plant garlic and leeks now for

spring harvesting.”

There are a few common mistakes that homeowners make, however: “Planting plants that deer eat and not thinking about the critters that come though your yard is something I see a lot,” said Grimes.

Giving a garden too much water is another frequent mistake, according to Storvick. “Mulching around the base of plants helps protect them from cold and wind, as well as keeping in moisture.”

Also, take care when pruning spring-blooming shrubs and trees, he cautioned: “While a lot of plants prefer winter pruning, a lot of our great spring-blooming shrubs, like azaleas, for example, will only produce flowers on the previous season’s growth, so by pruning in the winter, you eliminate all of the flower buds.”



PHOTO COURTESY OF KATIA GOFFIN GARDENS

**The fading colors of hydrangea blooms add subtle color to a fall landscape.**

**It's Time to Plant!**

Mums • Pansies • Ornamental Grasses  
Ornamental Cabbage and Kale  
Trees • Shrubs • Perennials • Sod • Holland Bulbs

**Pumpkins • Gourds • Cornstalks • Fall Decorating Ideas**

**FREE SEMINARS!**  
Saturday, October 11 at 10 am  
Merrifield: Evergreens  
Gainesville: Growing Beautiful Bulbs  
And at our Fair Oaks location:  
**76th Annual Potomac Rose Society Rose Show**  
Sat., Oct. 11, 1-6 pm & Sun., Oct. 12, 12-4 pm  
Fall schedules available in our stores and on our website

It's time to bring your houseplants inside!  
**Decorative POTS & PLANTERS**  
Ceramic, terra cotta, plastic, concrete  
**20% OFF** While they last  
Good 10/8 - 10/15/14 in stock only

*And mark your calendars for our*  
**5th Annual Dog Halloween Custom Contest - Saturday, Oct. 25th!**

MERRIFIELD 703-560-6222	FAIR OAKS 703-968-9600	GAINESVILLE 703-368-1919
----------------------------	---------------------------	-----------------------------

New Fall Hours: Daily 8 am - 7 pm

[merrifieldgardencenter.com](http://merrifieldgardencenter.com)

**100%  
FINANCING  
AVAILABLE\***

**SAVE ON  
QUICK-DELIVERY  
HOMES**

# BEST OF FALL SALES EVENT

**ALL  
CLOSING COSTS  
PAID\***

**ENDS  
OCT. 31<sup>ST</sup>!**



#### SINGLE FAMILY HOMES

##### WESTEND AT STONE RIDGE

VILLAGE RUN  
Priced from the Upper \$500's.  
703-764-5462

MARRWOOD  
Priced from the Mid \$600's.  
703-764-5414

CEDARWOOD  
*Coming Soon!*  
Luxury Homes featuring 1-Level Living  
703-764-5482

##### BELMONT GLEN VILLAGE

Priced from the Low \$600's.  
703-764-5435

##### BRAMBLETON

NORTHSTAR AT EMERALD RIDGE  
Priced from the Low \$700's.  
703-764-5478

EDGEWOOD AT EMERALD RIDGE  
Priced from the Mid \$600's.  
703-764-5481

##### ESTATES AT BULL RUN GOLF CLUB

Priced from the Mid \$700's.  
703-764-5443

#### VILLAS & TOWNHOMES

##### WESTEND AT STONE RIDGE

CEDARWOOD  
*New Villa Model Grand Opening!*  
Priced from the Low \$400's.  
703-764-5493

VILLAGE SQUARE  
*Grand Close-out!*  
3-Level Towns priced from the Low \$400's.  
703-764-5493

TOWNE CENTRE CROSSING  
*Grand Close-out!*  
Villas priced from the Low \$400's.  
703-764-5492

##### BRAMBLETON

SOUTHBEND AT EMERALD RIDGE  
Villas priced from the Mid \$400's.  
703-764-5433

Towns priced from the Low \$400's.  
703-764-5426

CLOVER HILL AT EMERALD RIDGE  
The Townsend Collection  
3-level brick from the Upper \$400's.  
703-764-5441

The Brixton Collection  
3-level brick from the Low \$400's.  
703-764-5448

##### BROADLANDS

BROADLANDS STATION  
*Grand Close-out!*  
Priced from the Low \$400's.  
703-764-5451

#### OLDE TOWNE SQUARE

*Own For Less Than Rent!*  
Priced from the Low \$300's.  
703-764-5447

#### CONDOMINIUMS

##### WESTEND AT STONE RIDGE

CENTRE PARK  
Elevator Condos priced from the Low \$300's.  
703-764-5487

##### BROADLANDS

THE VILLAGES AT BROADLANDS  
*50+ Active Adult Community*  
*Over 80% Sold Out!*  
Priced from the Mid \$300's.  
703-764-5482

##### Van Metre Design Studio

Browse Hours:  
Tues. & Thurs. 5pm - 8pm,  
Sat. 10am - 6pm & Sun. 11am - 6pm  
703-348-5800



**New & Now on  
the App Store!**

[www.VanMetreHomes.com/BestOfFall](http://www.VanMetreHomes.com/BestOfFall)



\*Offer valid on contracts written between October 1 and October 31, 2014. No adjustments on previous contracts. Some restrictions apply. Offer is valid on qualifying homes only that must settle on or before December 23, 2014. All lender allowable closing costs paid. 100% financing available for qualified buyers. This offer is not redeemable for cash or cash equivalent. Cannot be combined with other offers or discounts. Offer and prices subject to change at any time without notice. For specifics on the Best of Fall Sales Event, and individual community savings, see Sales Manager for details. 10/2014.