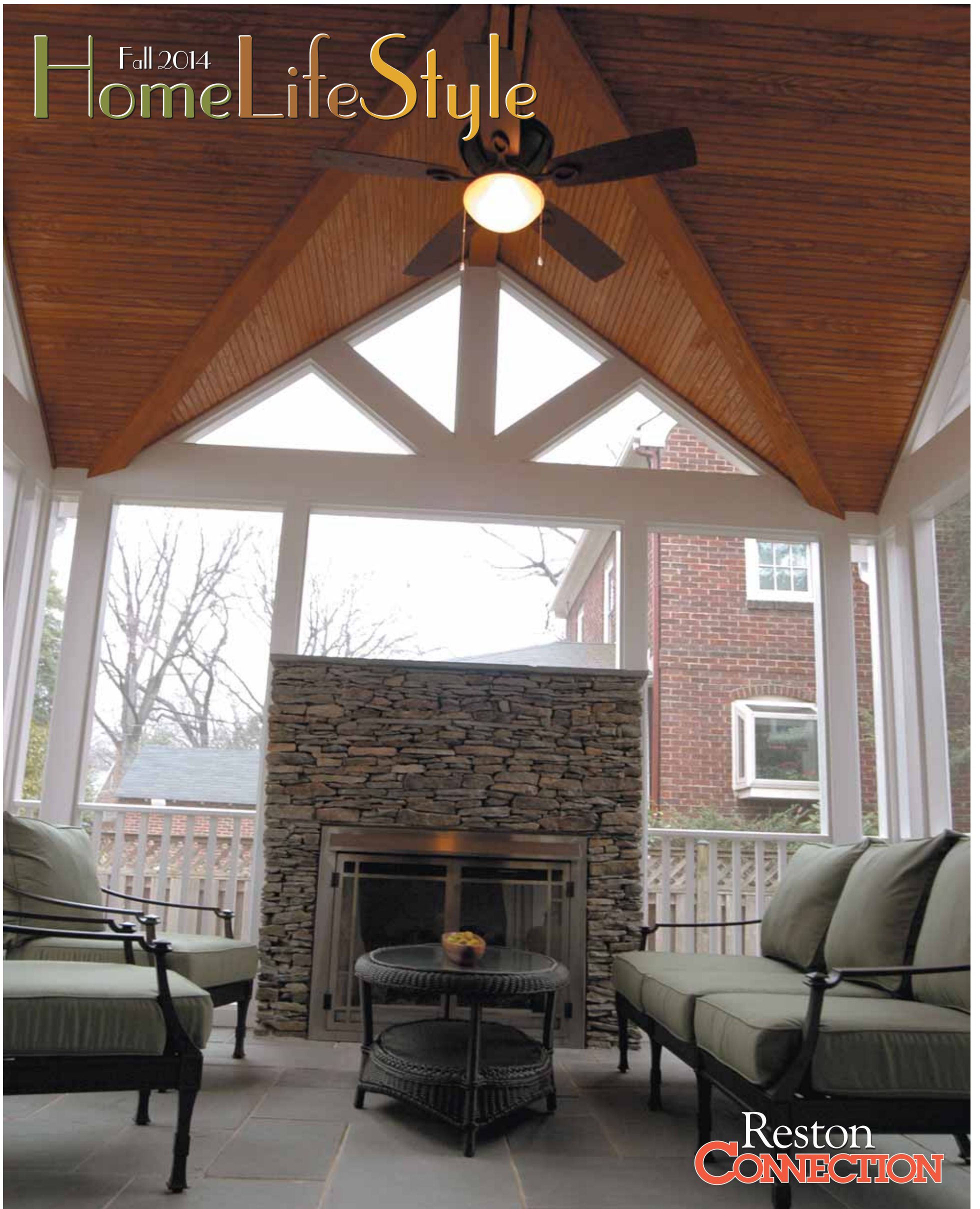


Fall 2014 HomeLifeStyle



COURTESY OF SKILL CONSTRUCTION & DESIGN

Reston
CONNECTION

LOCAL MEDIA CONNECTION LLC

ONLINE AT WWW.CONNECTIONNEWSPAPERS.COM

Neighbors Helping Neighbors

Clifton residents to hold tour of remodeled homes to benefit widow.

Neighbors help each other. That's what communities have always been about. Long-time Clifton resident Bob Gallagher is rallying his friends and peers to help his neighbor Elsa Armendaris.

Armendaris, a mother of seven, needs funds to repair the badly deteriorated driveway to her home, which is also a local day care center. To help out, Gallagher, who is a principal at Sun Design Remodeling, has organized a tour of three newly remodeled Clifton homes, each the handiwork of a different remodeler.

"The homes are all pretty spectacular in

their own right," Gallagher says. "We've found that homeowners really enjoy seeing what their neighbors are doing. But this is also about helping a local person in need; that's the sense of community which Clifton has always exemplified."

In addition to showcasing a home recently renovated by Sun Design Remodeling, the tour will feature recent work by Daniels Design and Remodeling and Kohlmark Group Architects and Builders, all active in Clifton and environs for years.

Tim Reed of Tibbs Paving will be donating the labor, equipment and trucking needed for the driveway re-paving.

A native of El Salvador, Armendaris lost her husband, David, to leukemia six years ago and, as the sole means of her family's support, decided to set up her home as a day care center.

Since it was convenient to nearby Clifton Elementary, parents would leave their children with Armendaris before and after school. But when Clifton Elementary closed in 2010, the day care center lost more than half its students. Not long after that, the winding asphalt driveway leading to the house began to seriously deteriorate.

That's when her friend, Christina Gallagher, whose children had attended the

day care center, offered to ask her husband, Bob, for ideas.

"I just thought there must be a way that a community as old and close-knit as Clifton could help one of its own," said Bob Gallagher, who grew up in Clifton where his father practiced medicine. "My company has learned a lot from doing our own home tours, so a coalition of remodelers already active in Clifton seems like a logical way to reach out to the community."

Remodeler's Charity Home Tour, Nov. 15, 10 a.m.-4 p.m. Visit www.RemodelersCharityHomeTour.com or call 703-425-5588 for more.

October is FREE WINDOWS MONTH at Renewal by Andersen.¹



Why is October one of the best times to replace your windows?

Because if you call us now, you can get your more energy-efficient windows installed **before** the really cold weather is here.

Our exclusive High-Performance Low E-4® SmartSun™ glass is **up to 70% more energy efficient[†]**. It's engineered to make your home more comfortable in the colder months.

Call before October 31st!



Our Fibrex® material is
2X STRONGER
THAN VINYL



Why have our customers chosen us over another window company?

1. Fibrex® Material

Our exclusive Fibrex material was **researched by Andersen** for 30 years before it was installed in even one home. **Our Fibrex material is twice as strong as vinyl.**

2. Unique Look

Our window has the **elegant look and strength of a wood window**, but our Fibrex material doesn't demand the same maintenance of wood.

3. Accountability

There's no frustrating "middle man" to deal with. **We sell, build, install and warrant both our windows and installation.**

Renewal
by Andersen.
WINDOW REPLACEMENT



an Andersen Company

Call for your FREE Window Diagnosis

703-775-2256

It's like getting
FREE WINDOWS
for 1 year¹

NO MONEY DOWN

NO PAYMENTS

NO INTEREST
FOR 1 YEAR¹

Plus

SAVE \$229
on every window¹

and

SAVE \$629
on every patio door¹

Offer only available as part of our
Instant Product Rewards Plan.

Restrictions and conditions apply; see your local representative for details. Cannot be combined with prior purchases, other offers, or coupons. No adjustments to previous orders. Offer not available in all areas. Discount applied by retailer representative at time of contract execution and applies to minimum purchase of 6 or more windows and 4 or more patio doors. Offer does not include bay/bow windows or any upgrades considered non-standard options. Offer only available as part of our Instant Product Rewards Plan. As part of the Instant Product Rewards Plan, all homeowners must be present and must purchase during the initial visit to qualify. To qualify for discount offer, initial contact for a free Window Diagnosis must be made and documented on or before 10/31/14 with the appointment then occurring no more than 10 days after the initial contact. 0% APR for 12 months available to well-qualified buyers on approved credit only. Not all customers may qualify. Higher rates apply for customer with lower credit ratings. Financing not valid with other offers or prior purchases. No Finance Charges will be assessed if promo balance is paid in full in 12 months. Renewal by Andersen retailers are independently owned and operated retailers, and are neither brokers nor lenders. Any finance terms advertised are estimates only and all financing is provided by third-party lenders unaffiliated with Renewal by Andersen retailers, under terms and conditions arranged directly between the customer and such lender, all subject to credit requirements. Renewal by Andersen retailers do not assist with, counsel or negotiate financing, other than providing customers an introduction to lenders interested in financing. This Renewal by Andersen location is a independently owned and operated retailer. VA Lic # 27010307644, DC Lic # 420212000031. "Renewal by Andersen" and all other marks where denoted are marks of Andersen Corporation. ©2014 Andersen Corporation. All rights reserved. ©2014 Lead Surge LLC. All rights reserved. [†]Values are based on comparison of Renewal by Andersen® double-hung insert window SHGC to the SHGC for clear dual pane glass non-metal frame default values from the 2006 and 2009 International Energy Conservation Code.

The Family That Plays Together ... Needs New Space

Innovative Great Falls solution with art studio meets needs of three generations.

BY JOHN BYRD

“A home is a machine for living in,” architectural pioneer **Eduard LeCorbusier** said in the 1930s, by which he meant good residential design should meet current lifestyle requirements, yet retain enough flexibility to readily transition into a place that supports newly arising needs.

Design consultant **Mindy Mitchell**, concurs on some basic principles.

“You want a solution that fully responds to everyday needs,” Mitchell says. “But it’s also useful to consider how you might be re-using key spaces from time to time, or even a decade from now.”

This may be especially true in a “creative” household, Mitchell adds, where the goal is fostering an environment that organically responds to all sorts of overlapping projects.

Case in point: the recently re-invented lower level plan to the Great Falls home of **Lesley and Tim Hackman**, two long-term residents now actively involved in the community’s burgeoning art scene.

Looking around the sunny family play space, which will be featured in the upcoming remodeling home tour Oct. 17-19, it’s a little hard to imagine that last year the Hackmans were scarcely using the suite at all.

Recently retired, Tim was free from professional obligations. The couple’s two



PHOTO COURTESY OF MITRO HOOD

In the newly designed family entertainment area, a wall-sized console with a flat screen television stretches out in front of an L-shaped “viewing” couch. A fully stocked beverage center is on the opposite wall convenient to an outside patio.

daughters were out of the house, raising families of their own. Like most empty-nesters, the Hackmans were idly wondering how to better use a spacious home designed for past needs.

“We had been talking about upgrading some rooms, but weren’t using the lower level for much more than laundry and storage,” Lesley recalls. “All the light in the entire suite originated from windows and doors on the rear [side of the house], so the interior rooms were too dark. Still, we hadn’t gotten too far into an actual plan.”

Then an unexpected turn brought latent remodeling considerations to the fore: last spring the entire lower level was flooded by three inches of water when a sump pump failed; it was a situation that could not be ignored.

“One way or another, we knew we were

going to have to do something about it,” Lesley said.

A professional organizer as well as a space planner, Mitchell has been working with **Sun Design Remodeling** for close to a decade.

“I’m generally the point person and *de facto* project manager,” Mitchell said. “My job is to help owners get a clear idea of what they’re looking for so that the design process is focused and on-track from start to finish.”

This is especially critical, Mitchell notes, when the makeover needs to satisfy a diverse agenda.

Lesley wanted functional studio space for her quilting and photography, but she had also decided to babysit two of her grandchildren three days a week, a commitment that would require work stations for arts

Details

Visit the Hackmans’ remodeled lower level during the Great Falls Studio Tour, Friday-Sunday, Oct. 17-19, 1-5 p.m. daily. Visit greatfallsstudios.com/tour.php or www.SunDesignInc.com or call 703-425-5588.

and crafts projects as well as kitchenette suitable for the occasional cooking lesson.

They wanted a media center large enough for the extended family (both daughters live in the metro area), and places to prepare and share a meal with easy access to an adjacent outdoor patio and backyard barbecue.

On an entirely different note, the lower level still had to perform its duties as the family laundry room. And it should also provide quarters for the occasional sleep-over guest.

“It’s when an agenda becomes more specific that space planning really needs to be thoughtful and precise,” Mitchell says.

The existing full bath is enlarged and upgraded into something suitable for overnight guests while one wall of the studio now accommodates a handsome custom cabinet that conceals a comfortable Murphy bed. The redesigned “all purpose room” (laundry/kitchenette/dining table) now features a full-sized refrigerator, microwave and dishwasher.

Lesley Hackman says the makeover has proven to be a perfect solution in this newly active phase of her life.

“I can spend the morning or afternoon working on art projects and helping the grandchildren. Then take a hot bath. It’s a great environment,” she said. “I’m really glad we created it.”

Planting for Fall Planning your autumn garden and yard.

BY MARILYN CAMPBELL
THE CONNECTION

As the first few weeks of fall unfold, carrying with them the promise of rich and vibrant colors, many local residents are starting to plan their fall gardens, both ornamental and edible. Pruning and overall garden cleanup will make way for fall plants. In fact, this is the perfect time to clear away summer foliage and plant, horticulture gurus said.

“Because the ground is still warm and air is cool, there is less transplant shock for plants when you take them out of the con-

tainer to plant them,” said **Kelly Grimes** of Good Earth Garden Market in Potomac, Md. “Now is a great time to put in a landscape.”

The first step is preparing the ground. “You have to amend the soil; that is mixing in compost and soil so the plants’ roots can grab a hold of the soil with compost,” said Grimes. “That really helps any planting.”

Katia Goffin of Katia Goffin Gardens in McLean, Va., likens planning a garden to putting together a puzzle. “Everything has to [look] like it belongs,” she said. “It’s about designing your bed line so it enhances your property, versus ‘I stuck this in my garden and doesn’t it look good?’”

Take a few minutes and actually plan out your garden because no matter what you decide to plant for fall, an aesthetically appealing garden starts with an effective strategy. “It is getting a good plan together,” Goffin said. “It is a question of scale and putting it together right. You have to look at your plot of land and decide where you want plants to go and how you want it to look.”

FOR DECORATIVE GARDENS and yards, mums and pansies are among fall’s

SEE PLANTING, PAGE 7

Reston
CONNECTION

HomeLifeStyle

IS PRODUCED BY
CONNECTION NEWSPAPERS
WWW.CONNECTIONNEWSPAPERS.COM
LOCAL MEDIA CONNECTION LLC

FOR MORE INFORMATION,
CALL 703-778-9431 OR EMAIL
SALES@CONNECTIONNEWSPAPERS.COM



OCTOBER 17-19, 2014
10:00am to 5:00pm

Join us on
a driving
adventure to
art studios
hidden on the
back roads
of Great Falls,
Virginia.
Meet 49 artists.
Rain or Shine.

IT'S FREE!

3
DAYS
THIS
YEAR!

ELEVENTH ANNUAL Great Falls Studios ART TOUR

www.GreatFallsStudios.com



The tour is sponsored by Sun Design Remodeling Specialists, which will hold an open house at a Great Falls home it has renovated. Stop by to get new ideas from their creative staff to reimagine your home.

SUN DESIGN
Design. Remodel. Relationships.



THE MAP

The Studios. The numerals in the red squares correspond to the number given to each studio. The numbers run roughly from west to east and north to south on the map. At right, you will find an alphabetical listing of the artists by medium, and the number of each artist's studio. These numbers will also be found on the road sign nearest the studio. Wheel chair access is marked , hands-on activities marked .

Sun Design venue. The yellow-and-brown sun icon  corresponds to a location where Sun Design is showcasing home renovations. Join Sun Design and Children's Author and Homeowner, Lesley Hackman for a remodeled home tour, 735 Forest Park Road.

THE ARTISTS

Studio Tour Headquarters #12 

Digital Artists

Walt Lawrence.....#19
Terri Parent.....#19

Fiber Artists

Dory Emmer.....#26
Cindy Grisdela.....#19
Vad Moskowitz.....#3

Jewelry Designers

Jorge Adler.....#15
Donna Barnako.....#19
Richard Masaniello.....#26

Layered Paper Artist

Ronni Jolles.....#19

Mixed Media Artists

Roberta Pruett Beasley.....#19
Penny Burk.....#21
GuruSangat Khalsa.....#20
Heidi Mraz.....#10

Painters

Naz Akbar.....#13
Leslie Anthony.....#14
Jill Banks.....#19
Karen Bateman.....#9
Hwa Crawford.....#18
Coty Dickson.....#14
Jennifer Duncan.....#17
Elaine Elmsky.....#19
Robert Gilbert.....#24
Lori Goll.....#11
Layla Gray.....#14
Yeganeh Hejazi.....#19
Carol Howard.....#19
Yiyan Huang Huff.....#7
Linda Jones.....#26
Tina Learned.....#19
John McCabe.....#19
Begoña Morton.....#4
Pat Neuman.....#8
Ann Noel.....#11
Vandana Pamecha.....#25
Gali Pean.....#14
Jay Pigeon.....#11
Lockini Rumburg.....#1
Judith St. Ledger-Roty.....#19
Lisa Tureson.....#19

Photographers

Jan Bender.....#2
Robin Kent.....#22
Dee Leggett.....#11
Silvia Gonzalez Roman.....#18
Dean Souleles.....#23

Potters

Barbara Gatterdam.....#16
Laura Nichols.....#9

Printmakers

William Tutthill.....#6

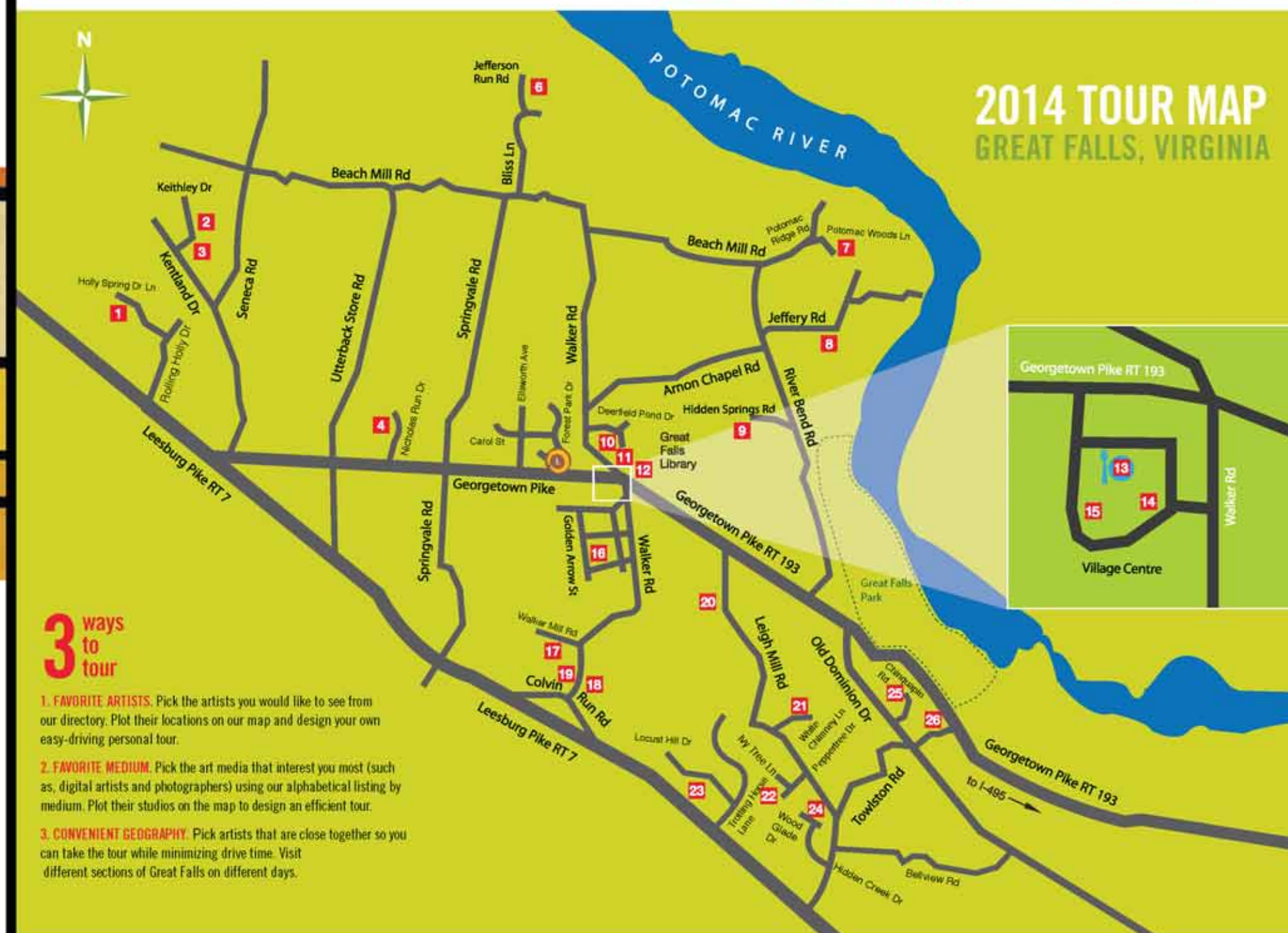
Wood Carver

Michael Long.....#20

Great Falls School of Art.....#19

The Old Brogue.....#13

Most artists are open for all 3 tour days. Refer to the full brochure available at all studios for exceptions.



3 ways to tour

1. FAVORITE ARTISTS. Pick the artists you would like to see from our directory. Plot their locations on our map and design your own easy-driving personal tour.

2. FAVORITE MEDIUM. Pick the art media that interest you most (such as, digital artists and photographers) using our alphabetical listing by medium. Plot their studios on the map to design an efficient tour.

3. CONVENIENT GEOGRAPHY. Pick artists that are close together so you can take the tour while minimizing drive time. Visit different sections of Great Falls on different days.

Local REAL ESTATE

PHOTOS BY CRAIG STERBUTZEL/
THE CONNECTION

August, 2014 Top Sales in Reston, Oak Hill and Herndon

1 2258 Compass Point Lane,
Reston — \$1,325,000

3 11593 Cedar
Chase Road,
Herndon —
\$1,080,000

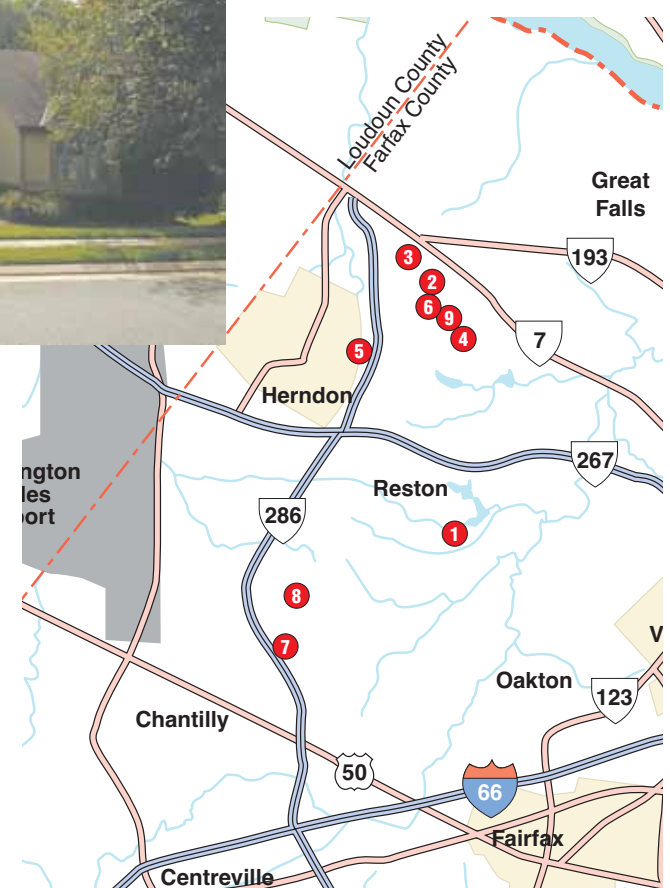
2 11307 Stones Throw Drive,
Reston — \$1,110,000

4 1250 New Bedford Lane,
Reston — \$1,069,000

6 11303 Bright Pond Lane,
Reston — \$975,000

Address	BR	FB	HB	...	Postal	City	...	Sold Price	Type	Lot AC	PostalCode	Subdivision	Date Sold
1 2258 COMPASS POINT LN	4	..	3	..	1	RESTON	\$1,325,000	Detached	0.26	20191	RESTON	08/12/14
2 11307 STONES THROW DR	4	..	4	..	1	RESTON	\$1,110,000	Detached	0.58	20194	..	ESTATES AT WYNDHAM HILLS	08/12/14
3 11593 CEDAR CHASE RD	5	..	4	..	1	HERNDON	\$1,080,000	Detached	0.48	20170	CEDAR CHASE	08/08/14
4 1250 NEW BEDFORD LN	5	..	4	..	1	RESTON	\$1,069,000	Detached	0.33	20194	NEW BEDFORD	08/18/14
5 12050 CREEKBEND DR	6	..	4	..	1	RESTON	\$1,020,000	Detached	0.49	20194	RESTON	08/18/14
6 11303 BRIGHT POND LN	5	..	4	..	1	RESTON	\$975,000	Detached	0.47	20194	RESTON	08/29/14
7 3506 COMMODORE CT	4	..	4	..	1	OAK HILL	\$965,000	Detached	0.83	20171	CAMBERLEY EAST	08/29/14
8 3288 WILLOW GLEN DR	4	..	3	..	0	HERNDON	\$910,000	Detached	0.23	20171	STILL OAKS	08/15/14
9 11325 WOODBROOK LN	5	..	3	..	1	RESTON	\$901,000	Detached	0.25	20194	RESTON	08/01/14

COPYRIGHT 2014 REAL ESTATE BUSINESS INTELLIGENCE. SOURCE: MRIS AS OF SEPTEMBER 15, 2014.



Fireplaces Warm Outdoor Rooms

Tips for making your outdoor spaces comfy through the fall.

BY MARILYN CAMPBELL
THE CONNECTION

As the air turns crisp and we settle into fall, the time is ideal for creating a cozy setting, whether it's elegant or rustic or modern. Many people have adapted part of their landscape as an outdoor room.

"Outdoor porches whether screened or just covered with a roof are great fall spaces," said Susan Matus, a Potomac, Md.-based architect. "One can cozy them up with pillows and throws and outdoor lights, such as decorative twinkle lights or candles can create great ambiance."

Local designers reveal their favorite accessories and ideas for outdoor rooms and screened porches to help welcome the new season with style.

An outdoor fireplace commands attention and can offer a warm place for reading, napping or chatting with friends, and makes it comfortable to sit outside on a chilly evening.



PHOTO COURTESY OF
SKILL CONSTRUCTION AND
DESIGN, LLC

Lighting can transform a screened porch or outdoor room.

"I just built a stunning fireplace in a screened-in porch that transformed the space into a three-season room just in time for fall," said Robert Kalmin of Skill Construction and Design, LLC in Fairfax, Va. "Indoor-outdoor rugs and seating in fall colors make the space great for entertaining."

When it comes to outdoor fireplaces, however, there are a few caveats: "If it is a screened in porch, be careful of your ventilation. Whether you have a gas or wood-burning fireplace you have to have noncombustible material for the mantle and it needs to back discharge for smoke," said Kalmin. He says such fireplaces can be added to an

existing space in one-to-two weeks.

Accessories in warm, vibrant colors can help can transform an outdoor room from summer to fall. "Adding some cozy throw blankets to outdoor sofas allows you to stay outside on chilly nights," said Kerra Michele Huerta of Apartment Envy.

In fact, lighting can transform a screened porch or outdoor room. "To a screened porch, you can add a ceiling fan with a down light and an up-light," said Kalmin. "The higher light can give you general lighting and the lower lights can create ambient lighting, and can be moved in different directions for setting a mood."

Fall Plants

FROM PAGE 3

best flowering plants. "Mums need full sunlight to open and come in obvious, bold fall colors," said Grimes. "Pansies will take part sun, are a great color and will continue to bloom through spring."

Yarrow, asters, sedums, Lenten roses, and coral bells are among the fall plants that Jonathan Storvick, natural resource manager at the Office of Sustainability at George Mason University in Fairfax, Va., recommends.

"Fall is a great time to plant larger-sized perennials and container shrubs," said Storvick. "It also happens to be the time of year when nurseries are trying to get rid of a lot of their stock, so you can find some great deals."

For example, said Joel Cook of Merrifield Garden Center, in Fairfax, Merrifield and Gainesville, Va., "Burning bushes have beautiful fall colors like orange and fire red. As far as trees, maples like Japanese maples, sugar maple or black gum maple have beautiful colors."

Another eye-catching option is the yellow twig dogwood. Its "bright yellow branches and twig color ... are also fantastic for winter," said Mark White of GardenWise in Arlington, Va.

LOUDOUN HISTORIC HOMES

OATLANDS




Historic House & Gardens

MORVEN



Park Governor's Mansion

GEORGE C. MARSHALL



Marshall House

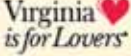
Discover ...

THE HISTORIC ESTATES of Loudoun County

Take advantage of a Comfort Suites/ Leesburg special discount package and spend a weekend exploring all three homes plus nearby vineyards, outlet shopping, and outstanding restaurants.



Visit LoudounHistoricHomes.org for tour hours and additional information.



Adopt/Donate/Volunteer

www.lostdogandcatrescue.org



We'll Clean. You Enjoy your Free Time.

- ✓ Bonded, Insured & Praised!
- ✓ Flexible Scheduling
- ✓ HEPA Vacuums Remove 4X Allergens & Pollen
- ✓ Trusted since 1989
- ✓ A+ BBB Rating





\$50 Off!

\$25 OFF + \$25 OFF

YOUR 1st VISIT YOUR 3rd VISIT

New clients only. Some restrictions apply. Expires 1-31-15. PROMO CODE: CONNEWSHL1014





Trusted House Cleaners for over 25 Years!

Call: 888.612.9840

maidbrigade.com

**100%
FINANCING
AVAILABLE***

**SAVE ON
QUICK-DELIVERY
HOMES**

BEST OF FALL SALES EVENT

**ALL
CLOSING COSTS
PAID***

**ENDS
OCT. 31ST!**



SINGLE FAMILY HOMES

WESTEND AT STONE RIDGE

VILLAGE RUN
Priced from the Upper \$500's.
703-764-5462

MARRWOOD
Priced from the Mid \$600's.
703-764-5414

CEDARWOOD
Coming Soon!
Luxury Homes featuring 1-Level Living
703-764-5482

BELMONT GLEN VILLAGE

Priced from the Low \$600's.
703-764-5435

BRAMBLETON

NORTHSTAR AT EMERALD RIDGE
Priced from the Low \$700's.
703-764-5478

EDGEWOOD AT EMERALD RIDGE
Priced from the Mid \$600's.
703-764-5481

ESTATES AT BULL RUN GOLF CLUB

Priced from the Mid \$700's.
703-764-5443

VILLAS & TOWNHOMES

WESTEND AT STONE RIDGE

CEDARWOOD
New Villa Model Grand Opening!
Priced from the Low \$400's.
703-764-5493

VILLAGE SQUARE
Grand Close-out!
3-Level Towns priced from the Low \$400's.
703-764-5493

TOWNE CENTRE CROSSING
Grand Close-out!
Villas priced from the Low \$400's.
703-764-5492

BRAMBLETON

SOUTHBEND AT EMERALD RIDGE
Villas priced from the Mid \$400's.
703-764-5433

Towns priced from the Low \$400's.
703-764-5426

CLOVER HILL AT EMERALD RIDGE
The Townsend Collection
3-level brick from the Upper \$400's.
703-764-5441

The Brixton Collection
3-level brick from the Low \$400's.
703-764-5448

BROADLANDS

BROADLANDS STATION
Grand Close-out!
Priced from the Low \$400's.
703-764-5451

OLDE TOWNE SQUARE

Own For Less Than Rent!
Priced from the Low \$300's.
703-764-5447

CONDOMINIUMS

WESTEND AT STONE RIDGE

CENTRE PARK
Elevator Condos priced from the Low \$300's.
703-764-5487

BROADLANDS

THE VILLAGES AT BROADLANDS
50+ Active Adult Community
Over 80% Sold Out!
Priced from the Mid \$300's.
703-764-5482

Van Metre Design Studio

Browse Hours:
Tues. & Thurs. 5pm - 8pm,
Sat. 10am - 6pm & Sun. 11am - 6pm
703-348-5800



www.VanMetreHomes.com/BestOfFall



*Offer valid on contracts written between October 1 and October 31, 2014. No adjustments on previous contracts. Some restrictions apply. Offer is valid on qualifying homes only that must settle on or before December 23, 2014. All lender allowable closing costs paid. 100% financing available for qualified buyers. This offer is not redeemable for cash or cash equivalent. Cannot be combined with other offers or discounts. Offer and prices subject to change at any time without notice. For specifics on the Best of Fall Sales Event, and individual community savings, see Sales Manager for details. 10/2014.