

# 'Guys Night Out'

# Potomac ALMANAC

Inside  
**SPRING FUN**

FOOD & ENTERTAINMENT  
PAGE 6

NEWS, PAGE 3

An overview of the 5th Annual Guys Night Out and Seder Summit at Beth Shalom.

## In Like a Lion ...

OUT & ABOUT, PAGE 2

## Collecting Shoes To Fight Against Poverty

NEWS, PAGE 3



## OUT & ABOUT



Two snow scenes from Friday, March 20.

# March: In Like a Lion, Up and Down Like a Gazelle



The spotting scope sitting on the observation platform looking out towards the Bald Eagle nest that sits across the Potomac River on an island.



A bald eagle sits on a nest visible with binoculars or a spotting scope from the observation deck at the Great Falls Tavern Visitors Center of the C&O Canal National Historical Park on March 15. The nest is also visible from the Virginia Great Falls Park.



Snowdrops bloom in Potomac on March 15.



Tiny daffodils and snowdrops bloom in Potomac on Tuesday, March 24.

Sunset over Hughes Hollow on Tuesday, March 17.



Great Falls Tavern.

PHOTOS BY  
MARY KIMM  
THE ALMANAC



# ‘Guys Night Out and Seder Summit’

**Beth Sholom hosts annual night of fine fare and camaraderie.**

BY SUSAN BELFORD  
THE ALMANAC

**K**osher BBQ ribs, fried chicken, fries — and 13 Scotch companies pouring samples — nothing could make a gathering of 500-plus men any more content than devouring their favorite comfort foods while bonding and schmoozing with other men. In addition to fine fare and camaraderie, the men benefited from Rabbi Nissan Antine’s discussion concerning how to make their own family Passover Seder relevant and significant.

They also had the opportunity to “give back” by bringing gently-used sport coats and suits for The Wider Circle and by donating to the Jewish Social Services Agency (JSSA) for their Maaot Chitim mission to make certain all families can celebrate Passover in a meaningful way. The 5th annual BBQ, Scotch and Seder Summit took place on March 22 at the Beth Sholom Congregation on Seven Locks Road in Potomac. This gathering was the largest Seder summit event held in the D.C. region.

The chairman of the event, Mark Eidelman, said, “Guys who attended were from all ends of the Jewish spectrum — from Chabad Rabbis to guys who have never been in a modern orthodox synagogue. They came from Maryland, D.C. and Virginia — and further away. We have one dad



**From left are Lou Marmon, Rabbi Nissan Antine, Mark Eidelman, Saul Goldfarb and David Felsen.**

PHOTOS BY DAVID WASSERMAN

**From left are Aaron Sagui of the Israeli Embassy, Alan Gross and Bruce Pascal.**



who traveled from New Jersey to attend with his son. We had three-generation attendees — grandfather, son and grandson. With all of today’s distractions, this is pretty rare.”

The group has grown from 130 to more than 500 who came last year and this year. Besides the bonding and friendship that exudes from the event, men have the opportunity to help and support fellow men. This year they launched a “job matching” list where attendees are able to list job and business opportunities that they are aware of in their own companies or elsewhere — thus eliminating the “online dark hole” where many resumes end up.

The host for the evening was Rabbi Nissan Antine of the Beth Sholom Congregation. “This event is an amazing opportunity for men to come together and rethink their values, expand their Jewish knowledge and practices and gain some new ideas concerning their Passover Seder. I will be discussing how to make this important holiday meaningful to them as well as to their families. Seder is a ‘home holiday.’ The primary mitzvah is to teach your children about the Passover story — the story of our people and their values. We were slaves in Egypt and now God has set us free. The seder helps to make us feel like we are there and to understand what Jews have gone through. We eat the matzah, the bread of slavery and taste the bitter root so we know what it tastes like and feels like,” he said.

“The specific message is that children should be able to look to their parents as role models — not teachers — but people who are living their values — and living life

SEE BETH SHOLOM, PAGE 11

# Collecting Shoes To Fight Against Poverty

**Junior Girl Scout Troop 642 spearheads Soles4Souls shoe drive.**

BY SUSAN BELFORD  
THE ALMANAC

**E**veryone has a pair of shoes or two that aren’t as comfortable as they would like, don’t go with anything they have — or that they are just plain tired of. Residents should dig deep in their closets and bring their “gently used” shoes to the Potomac United Methodist Church (PUMC) at 9908 South Glen Road in Potomac on Sunday, March 29 from 1:30 – 3:30 p.m. By donating shoes, residents will be helping Soles4Souls, a global not-for-profit organization dedicated to fighting the “devastating impact and perpetuation of poverty.”

Junior Girl Scouts, who are members of Troop 642, attend Potomac Elementary, Wayside Elementary and The German School. While searching the internet for

charities that they could become involved in helping, the girls, all 10 years old, discovered Soles4Souls and became excited and energized about supporting the organization in meeting their goal of collecting one million pairs of shoes. The campaign, which continues through Earth Day, April 22 is aimed at diverting used shoes away from landfills and instead, using them to generate a source of revenue for micro-entrepreneurs in developing nations. The girls will earn their Bronze Award — the highest honor a Girl Scout Junior can achieve — for their work on this fundraiser.

“Junior Girl Scout Troop 642 is supporting Soles4Souls because it is the definition of a social enterprise where solid business practices are used to create positive change in people’s lives,” said Troop Leader Candice



PHOTO CONTRIBUTED

**Junior Girl Scouts, members of Troop 642, are collecting shoes for Soles4Souls.**

SEE COLLECTING, PAGE 11



## BUSINESS

# Beer, Wine and Sake Added to En Bistro

## Restaurant receives liquor license.

BY SUSAN BELFORD  
THE ALMANAC

Since opening this past year, En Bistro and Sushi has impressed the Potomac community with its fresh sushi and sashimi, served in a manner that resembles a piece of fine art, instead of a dinner entrée. The small restaurant, located behind the Verizon store and next to Tally Ho in the Potomac Village Shopping Center is a Japanese bistro, complete with a kimono, once owned by a Japanese movie actor. The kimono was sent to owner Billy Ye by his mother many years ago — and he has been waiting to find the just right spot for hanging it.

The restaurant opened last March and has been an instant success. “However,” said Ye, “we had to wait a year for a license to be able to sell beer, wine and sake.” Ye, who owned Momo Taro Sushi (now closed) and Sushi EN in Rockville and EN Asian Bistro in Germantown, has sold his other restaurants and is focused on Potomac’s EN Bistro, as well as on his catering business. “I provide sushi for Congressional Country Club, Bethesda Country Club, the Woodley Park Marriott, the AT&T Golf Tournament, private homes, National Harbor and many more places,” he said. “We delivered 7,000 pieces of sushi to a big event at the National Harbor one weekend.” Right now, he is catering out of the Potomac restaurant but hopes to develop plans to move his catering business to a bigger site.



Billy Ye, owner of En Bistro and Sushi.

“My wife Lily and I are very pleased to be able to offer my customers both warm and cold sake,” Ye said. “We also have Ichiban and Sapparo Gold beer and Kendall Jackson, Berringer and Woodbridge wine. I am working to improve our choice of wines for our customers. They are very happy that we are able to offer sake, beer and wine.”

“Now, when our customers casually come by the restaurant and they can sit at the bar, enjoy a cold beer or glass of wine and watch their favorite sports. We offer complimentary edamame and they can relax while waiting for carry-out or for their sushi or other menu item,” said Ye.

Some of Ye’s newest menu items include his own creations: a spicy tuna won ton taco, a Mango-tango roll made of salmon, mango, avocado, lettuce and tempura crunchy wrap with yellow soybean paper, a Spider roll made with soft-shell crab

tempura, crab meat, avocados and lettuce with fish eggs on top and Jalapeno chili and eel sauce and his Shiitake mushroom and asparagus entrée.

Everything that is served at En Bistro and Sushi is fresh — and now customers can enjoy a glass of Japanese beer, sake or wine with lunch or dinner. En Bistro and Sushi will also deliver; one can place their order on line at [www.eat24.com](http://www.eat24.com) and the full menu is on-line at [www.enbistro.com](http://www.enbistro.com). Call the restaurant for reservations or take-out at 301-983-8600 or 301-983-8700.



Won ton tacos.



Sushi



With its new liquor license, the restaurant now offers Ichiban and Sapparo Gold beer and Kendall Jackson, Berringer and Woodbridge wine.

## BULLETIN BOARD

Email announcements to [almanac@connectionnewspapers.com](mailto:almanac@connectionnewspapers.com). Include date, time, location, description and contact for event: phone, email and/or website. Photos and artwork welcome. Deadline is Thursday at noon, at least two weeks before event.

### WEDNESDAYS THROUGH APRIL

**Wireless Wednesdays.** 11:30 a.m.-12:30 p.m. at Potomac Library, 10101 Glenolden Drive, Potomac. Get help with a new tablet, smartphone or e-reader. Bring wireless devices to Wireless Wednesdays at Potomac Library and learn to download digital content provided free by the library, including e-books, audiobooks, magazines and music. Call Jeff Corber, 240-777-0690 for more.

### WEDNESDAY/MARCH 25

**Run Faster, Longer and Stronger.** 9:30 a.m.-4:30 p.m. at Sibley Memorial Hospital, Department of Physician Therapy, 5255 Loughboro Road NW, Washington, D.C. The physical therapy department will offer free 30-minute comprehensive running assessments using a new, state-of-the-art treadmill that analyzes key running characteristics. Call 202-660-6707 or email [Gstephe1@jhmi.edu](mailto:Gstephe1@jhmi.edu) for more.

**Children/Teen Support Group.** 6-7:30 p.m. at Montgomery Hospice, 1355 Piccard Drive, Rockville. Children ages 4 and up who have lost a parent or sibling may meet for a six-week support group led by professional counselors. The parent/guardian group meets at the same time. Registration required. Call 301-921-4400.

### THURSDAY/MARCH 26

**Planning Board Meeting.** Attend, watch or listen live to the Montgomery County Planning Board meeting. Agendas, which are posted two weeks in advance, can be viewed on the Agendas & Staff Reports page. Visit [www.montgomeryplanning.org](http://www.montgomeryplanning.org) for details.

**Home Selling Seminar.** 7-9 p.m. at The Potomac Room at The Bethesda Country Club, 7601 Bradley Blvd., Bethesda. Learn about pricing strategies, cost-effective improvements, and home staging. Tickets are \$25. Visit [www.rozansky.com](http://www.rozansky.com).

**Republican Forum.** 7-9 p.m. at the Potomac Library, corner of Glenolden and Falls Roads. Guest speakers include Hogan cabinet member Gail Bassette and Ehrlich cabinet member Jean Roesser, former state senator from western Montgomery County. Admission is free. Light refreshments will be served.

### FRIDAY/MARCH 27

**Thrift Sale.** 8 a.m.- 4 p.m. at St. Francis Episcopal Church, 10033 River Road, Potomac. Find books, clothing, collectibles, toys, antiques and jewelry. Call 301-299-4296.

### SATURDAY/MARCH 28

**Thrift Sale.** 9 a.m.- 1 p.m. at St. Francis Episcopal Church, 10033 River Road, Potomac. Find books, clothing, collectibles, toys, antiques and jewelry. Call 301-299-4296.

**Montgomery County GreenFest.** 11 a.m.-4 p.m. The first Montgomery County GreenFest is

SEE BULLETIN BOARD. PAGE 5

[WWW.CONNECTIONNEWSPAPERS.COM](http://WWW.CONNECTIONNEWSPAPERS.COM)



PHOTO CONTRIBUTED

## Lego Challenge

The winners of the Toy Castle Lego Build Challenge 2015 are Colin and Leah Smith, Minche Lee and Alex Mandy. Toy Castle, located in the Cabin John Mall, hosted its annual Lego Build Challenge on Saturday, March 21. Competitors’ models could not exceed 2 feet by 2 feet. There were a total of 61 entrants.



# BULLETIN BOARD

FROM PAGE 4

for anyone who has a passion for or would like to learn more about their environment. There will be something for everyone: those who aren't very "green" yet, dedicated environmentalists and children — films, games, speakers, information, how-to classes on a range of "green" topics, music, entertainment and more than 50 "green" businesses and nonprofits on display. Free. Visit [montgomerycountygreenfest.org](http://montgomerycountygreenfest.org).

## SUNDAY/MARCH 29

**Palm Sunday.** 8 a.m., 10:30 a.m. and 5:30 p.m. at St. James' Episcopal Church, 11815 Seven Locks Road, Potomac. Three services, brunch and an Easter plant sale. Free. Visit [www.stjamespotomac.org](http://www.stjamespotomac.org).

## TUESDAY/MARCH 31

**Planning Department's Semi Annual Report.** Learn more about the Planning Department's recent activities at the presentation of its Spring 2015 Semi-Annual Report to the Montgomery County Council. Visit [www.montgomeryplanning.org](http://www.montgomeryplanning.org) for details.

**Seeking Nominees.** City Council Vice President Nancy Floreen is seeking nominees for The Golden Shovel Award, which recognizes residents who helped neighbors clear ice and snow from the sidewalks this winter. Visit [nancyfloreen.blogspot.com](http://nancyfloreen.blogspot.com) for the nomination form.

**"Music Therapy & Dementia."** 3-4 p.m. at Arden Courts of Potomac, 10718 Potomac Tennis Lane, Potomac. This dementia education event will provide instruction on how to meaningfully incorporate music into the home. Call 301-980-2656 or

email [Potomac@arden-courts.com](mailto:Potomac@arden-courts.com).

## WEDNESDAY/APRIL 1

**Seeking Submissions.** The 34th annual Congressional Art Competition is seeking submissions from high school students who live or attend school in the Eighth Congressional District. Visit [vanhollen.house.gov/](http://vanhollen.house.gov/) and click "For Constituents" for more.

## THURSDAY/APRIL 2

**Great Decisions: Sectarianism in the Middle East.** 12:30-2 p.m. at Potomac Library, 10101 Glenolden Drive, Potomac. Great Decisions, a national program of the non-partisan Foreign Policy Association is sponsored by Friends of the Library, Potomac Chapter. Most months there is a guest speaker. The program is free and open to the public; bring a brown bag lunch. A copy of the 2015 Briefing Book is available at the Information Desk. The book cannot be checked out; it takes about an hour to read the relevant article. Books can be ordered at [fpa.org](http://fpa.org).

## SATURDAY/APRIL 11

**Volunteers Needed.** The Ferguson Foundation is looking for volunteers to help with the 27th Annual Potomac River Watershed Cleanup. Visit [fergusonfoundation.org](http://fergusonfoundation.org).

## TUESDAY/APRIL 14

**Leadership Montgomery Meeting.** 1-3 p.m. at Twinbrook Community Center, 12920 Twinbrook Parkway, Rockville. Experts will discuss the implications of a new administration and budget on senior services. Free for members, \$15 for nonmembers.

Visit [leadershipmontgomerymd.org](http://leadershipmontgomerymd.org).

## THURSDAY/APRIL 16

**"Out and About" Clubs for Teens.** 5 p.m. at JSSA, 200 Wood Hill Road, Rockville. This club is for teens (14-17) diagnosed with a Level 1 Autism Spectrum Disorder (formerly Asperger's syndrome and PDD-NOS). Participants will be encouraged to engage with their peers in a fun and stimulating environment. \$30 per session. Pre-registration is required to attend. Call 301-610-8321.

## SUPPORT GROUPS

**Suicide Grief Support Group.** At JSSA, 6123 Montrose Road, Rockville. This ongoing bereavement support group is for those who have lost a loved one to suicide. This group meets every first and third Monday. No charge. Pre-registration required. Call 301-816-2708.

**Because I Love You** is a nonprofit organization dedicated to supporting parents of troubled children of any age. The group meets Thursdays, 7:30-9:30 at Bethesda United Methodist Church, Room 209, 8300 Old Georgetown Road, Bethesda. Visit [www.becauseiloveyou.org](http://www.becauseiloveyou.org), or call 301-530-3597.

**Adult Bereavement Groups.** Dates and times vary depending on group members. Hospice Care, 518 S. Fredrick Ave. Gaithersburg. Peer driven support groups in those in need of support. Free. Contact Penny Gladhill at 301-990-8904, or [Pennyg@hospicecare.org](mailto:Pennyg@hospicecare.org).

**Suicide Grief Support Group.** Meets every first and third Monday at JSSA, 6123 Montrose Road, Rockville. A bereavement support group for those

SEE BULLETIN BOARD, PAGE 9

## NEWS BRIEFS

### Fields Opening Delayed

The opening of all Montgomery Parks' park and elementary / middle school athletic fields (excluding synthetic turf fields) have been delayed from the original opening date of March 15 until April 1 at the earliest, due to this year's harsh winter weather conditions. Field conditions will be assessed on a daily basis beginning April 1 to determine if they are suitable for use. Until then, teams are not permitted to play or practice on fields due to the risk of destroying surfaces as well as the ground underneath.

Use of park athletic fields is prohibited when park staff or Park Police have deemed them unplayable and during any of the following conditions: For additional information and updates about fields contact Montgomery Parks and Community Use of Public Facilities athletic field rainout line at 301-765-8787 or register for Montgomery Parks ALERT notifications at <http://www.montgomeryparks.org/media/alerts.shtm> to receive updates on field conditions. Updates regarding field status will also be available at [www.MontgomeryParks.org](http://www.MontgomeryParks.org).

### Later School Start Times

The Montgomery County Board of Education voted to change school starting and ending times for the public schools effective for the 2015-2016 school year — moving middle and high school start times 20 minutes later and elementary school start times 10 minutes later. This change will not affect the order in which students go to school, but will lengthen the elementary school day by 10 minutes, making it 6 hours and 25 minutes. The additional 10 minutes will only be used for lunch or recess. High school students will attend school from 7:45 a.m. to 2:30 p.m. and middle school students will attend school from 8:15 a.m. to 3 p.m. Elementary schools that begin at 8:50 a.m. will now begin at 9 a.m. and will end at 3:25 p.m. Elementary schools that begin at 9:15 a.m. will now begin at 9:25 a.m. and end at 3:50 p.m.

## SPECIAL CONNECTIONS CALENDAR

Advertising Deadlines are the previous Thursday unless noted.

### APRIL

*Easter Sunday is April 5*

4/8/2015.....HomeLifeStyle

4/15/2015.....A+ Camps & Schools

4/22/2015.....Real Estate Pullout – New Homes

4/29/2015.....A+ Camps & Schools Pullout

4/29/2015.....Mother's Day Celebrations, Dining & Gifts I

4/29/2015.....Spring Outlook 2015

### MAY

5/6/2015.....McLean Day Pullout

5/6/2015.....Mother's Day Dining & Gifts II

5/6/2015.....Wellbeing

*Mother's Day is May 10*

5/13/2015.....HomeLifeStyle

5/20/2015.....A+ Camps & Schools, Proms, Summer Planning

*Memorial Day is May 25*

5/27/2015.....Summer Fun, Food, Arts & Entertainment

E-mail [sales@connectionnewspapers.com](mailto:sales@connectionnewspapers.com) for more information.



**THE CONNECTION**

Newspapers & Online

**703-778-9431**

[www.ConnectionNewspapers.com](http://www.ConnectionNewspapers.com)

**Reaching Suburban Washington's Leading Households**

- Alexandria Gazette Packet
- Arlington Connection
- Burke Connection
- Centre View
- Chantilly Connection
- Fairfax Connection
- Fairfax Station/Clifton/Lorton Connection
- Great Falls Connection
- McLean Connection
- Mount Vernon Gazette
- Oak Hill/Herndon Connection
- Potomac Almanac
- Reston Connection
- Springfield Connection
- Vienna/Oakton Connection

For a free digital subscription to one or all of the 15 Connection Newspapers, go to [www.connectionnewspapers.com/subscribe](http://www.connectionnewspapers.com/subscribe)

Be the first to know – get your paper before it hits the press.

Complete digital replica of the print edition, including photos and ads, delivered weekly to your e-mail box.

Questions?  
E-mail: [goinggreen@connectionnewspapers.com](mailto:goinggreen@connectionnewspapers.com)



POTOMAC ALMANAC



**Assisting Hands®**  
Home Care

**"We're there when you can't be."**



We specialize in providing skilled and carefully vetted caregivers to provide our clients with compassionate and personalized care.

**Services include:**

- Companion Care
- Personal Care
- Surgery Recovery
- Respite Care
- Light Housekeeping

Family owned and operated by long-time Potomac residents, Cathy & Steve Lorberbaum. Call us for a free in-home consultation.

[www.assistinghands.com/potomac](http://www.assistinghands.com/potomac)  
**301-363-2580**



## SPRING FUN & ENTERTAINMENT

# An Ancient Art Form TAKING THE WORLD BY STORM



神韻晚會 2015  
**SHEN YUN**

5,000 YEARS OF  
CIVILIZATION.  
LIVE ON STAGE!

ALL-NEW 2015 SHOW  
WITH LIVE ORCHESTRA





## APRIL 17–26 THE KENNEDY CENTER

Watch trailer at [ShenYun.com/DC](http://ShenYun.com/DC)

**“Elegant—very athletic and very skilled!”**  
— John McColgan, Riverdance producer

**“5,000 years of Chinese dance and music in one night”**  
— The New York Times

**“The choreography is phenomenal. I think it’s the best show I have ever seen.”**  
— Valentina Alexess, former ballerina, Moscow Ballet

**Tickets on sale now!**  
[ShenYun.com/DC](http://ShenYun.com/DC) | 888-974-3698  
**The Kennedy Center Box Office or call 202-467-4600**  
**Online: [kennedy-center.org](http://kennedy-center.org) | Group tickets: 202-416-8400**



PHOTO BY B. EALOVEGA

**Haochen Zhang performed Bach’s two-part inventions at Shanghai Music Hall at the age of 5.**

### National Philharmonic Welcomes Haochen Zhang

Former child prodigy Haochen Zhang, now 24 years old, will make his Washington, D.C., orchestral debut on Saturday, March 28 and Sunday, March 29 at the Music Center at Strathmore, 10701 Rockville Pike, Rockville. The Chinese pianist, and the rest of the orchestra will be lead by the Philharmonic’s Music Director and Conductor Piotr Gajewski, who was also a child prodigy. They will perform Piano Concerto No. 3 by Rachmaninoff and other classical favorites. Tickets start at \$28 and free for children 7-17. Visit [www.nationalphilharmonic.org](http://www.nationalphilharmonic.org).

Email community entertainment events to [almanac@connectionnewspapers.com](mailto:almanac@connectionnewspapers.com). Include date, time, location, description and contact for event: phone, email and/or website. Photos and artwork welcome. Deadline is Thursday at noon, at least two weeks before event.

#### ONGOING

**Winter Programs.** Through March 29, 2 p.m. Join Chesapeake and Ohio Canal National Historical Park rangers and volunteers at the Historic Great Falls Tavern for interpretive programs and activities during the winter season. Visitors can participate in a Ranger’s Choice Program at 2 p.m. on Fridays, Saturdays, and Sundays. Call ahead to confirm programs in the event of inclement weather. Entrance fee to the park of \$5 per vehicle. Programs are free. The Great Falls, Maryland area of the Chesapeake and Ohio Canal National Historical Park is located at the intersection of Falls Road and MacArthur Boulevard in Potomac. Call 301-767-3714 or visit [www.nps.gov/choh](http://www.nps.gov/choh).

**“Making Our Marks.”** Through March 29, 12-6 p.m. at the Stone Tower Gallery, Glen Echo Park, 7300 MacArthur Blvd., Glen Echo. Glen Echo Park Partnership presents “Making Our Marks: New Work by Eight Printmakers,” offering new work by eight printmakers from Arlington Arts’ Lee Arts Center using varying techniques and subjects. Techniques include color etching, mono print, lithography, woodcut, linoleum-cut, and photopolymer intaglio. Visit [www.glenechopark.org](http://www.glenechopark.org) or call 301-634-2222.

**“Our Nation’s River.”** Through March 29, Monday-Saturday, 10 a.m.-6 p.m. at the Park View Gallery at Glen Echo Park Partnership presents “Our Nation’s River: A Photographic Journey Down the Potomac,” a solo exhibition of work by Jonathan Weiner that takes the viewer through a photographic narrative of the Potomac River. Visit [www.glenechopark.org](http://www.glenechopark.org) or call 301-634-2222.

**“My Little Town.”** Through April 12, Saturdays, 1-4 p.m.; Sundays and Mondays, 1-8 p.m. at the Photoworks Gallery, Glen Echo Park, 7300 MacArthur Blvd., Glen Echo. Glen Echo Park Partnership presents 2015’s juried show, “My Little Town: A Juried Photography Exhibition About Washington, D.C.” Juried by photographer Peter Garfield, this exhibition showcases the neighborhoods and local areas of Washington, D.C., providing a glimpse into the more intimate and personal side of the nation’s capital. Featuring a wide-ranging group of local photographers. Visit [www.glenechopark.org](http://www.glenechopark.org) or call 301-634-2222.

**“Jack and the Beanstalk.”** Through May 3, at Glen Echo Park, 7300 MacArthur Blvd., Glen Echo. The Puppet Co. presents “Jack and the

Beanstalk,” the classic children’s tale about the boy that doesn’t know beans about trading, but still manages to climb his way to the top. Jack finds that happiness lies in helping others rather than mere personal gain. Told with rod puppets and some surprising twists, Jack has long been a favorite of The Puppet Co. audiences. Visit [www.thepuppetco.org/](http://www.thepuppetco.org/) for more.

**VisArts Cocktails and Canvas Class.** at VisArts in the Painting & Drawing Studio, 155 Gibbs St., Rockville. Price \$40. Visit [www.visartsatrockville.org/cocktails-and-canvas](http://www.visartsatrockville.org/cocktails-and-canvas) for more.

**Weekly Blues Dance.** Thursdays 8:15-11:30 p.m. in the Back Room Annex at Glen Echo Park, 7300 MacArthur Blvd. Capital Blues presents rotating DJs and instructors with beginner workshop 8:15-9 p.m., no partner necessary. \$8 for all. Visit [capitalblues.org](http://capitalblues.org) for more.

#### WEDNESDAY/MARCH 25

**Wind Ensemble Concert.** 8 p.m. at The Jewish Community Center of Greater Washington, 625 Montrose Road, Rockville. The United States Air Force Band- Chamber Wind Ensemble will perform. Free. Call 202-767-5658 or visit [www.usafband.af.mil](http://www.usafband.af.mil).

#### FRIDAY/MARCH 27

**Museum Trip.** 8:30 a.m.-6 p.m. Live and Learn Bethesda will visit the “Van Gogh, Manet and Matisse: The Art of the Flower” exhibit at the Virginia Museum of Fine Arts. \$100; includes transportation, admission, tour and lunch. Register at [www.liveandlearnbethesda.org](http://www.liveandlearnbethesda.org).

#### SATURDAY/MARCH 28

**GreenFest.** 11 a.m.- 4 p.m. at Jesup Blair Local Park and Montgomery College Takoma Park/ Silver Spring, 7600 Takoma Avenue, Takoma Park. The festival will feature educational, entertaining and family-friendly activities, exhibits and workshops suitable for all ages. The focus of the event will be the health of the environment and what can be done to improve it. Free. Visit [www.montgomerycountygreenfest.org](http://www.montgomerycountygreenfest.org).

**Canvas and Craig.** 7-10 p.m. at visarts, 155 Gibbs St., Rockville. Adapt the work of local artist Craig English into your own acrylic painting. Meet the artist and enjoy light dinner fare. Tickets are \$55. Visit [www.visartsatrockville.org](http://www.visartsatrockville.org).

**Washington Conservatory 2014-15 Piano Plus Concerts.** 7 p.m. Westmoreland Congregational United Church of Christ, 1 Westmoreland Circle, Bethesda. Concert series features members of the Washington



# SPRING FUN & ENTERTAINMENT

Conservatory faculty and guest artists. Free (pay-as-you-can, donations welcome). Visit [www.washingtonconservatory.org](http://www.washingtonconservatory.org) or call 301-320-2770 for more.

**Concert.** 8 p.m. at The Music Center at Strathmore, 5301 Tuckerman Lane, North Bethesda. Former child prodigies Haochen Zhang and Piotr Gajewski will perform Rachmaninoff's 3rd concerto. Children's admission is free. Tickets are \$28. Visit [www.nationalphilharmonic.org](http://www.nationalphilharmonic.org).

## WEDNESDAY/APRIL 1

**Painting Class.** 7-9 p.m. at Visarts Rockville, 155 Gibbs St., Rockville. This beginner to intermediate class will focus on basic watercolor techniques. Participants will work from a pre-sketched image of a beach scene. Tuition is \$75. Supplies are not included. Visit [www.visartsrockville.org](http://www.visartsrockville.org).

## SUNDAY/MARCH 29

**Seafood Fundraiser.** 1-5 p.m. at The Rescue Squad, 5020 Battery Lane, Bethesda. The Bethesda-Chevy Chase Rescue Squad Alumni Association are hosting their annual all-you-can-eat shrimp and oyster fundraiser. Tickets are \$45 in advance or \$50 at the door. Call 301-442-4136.

**Concert.** 3 p.m. at The Music Center at Strathmore, 5301 Tuckerman Lane, North Bethesda. Former child prodigies Haochen Zhang and Piotr Gajewski will perform Rachmaninoff's 3rd concerto. Children's admission is free. Tickets are \$28. Visit [www.nationalphilharmonic.org](http://www.nationalphilharmonic.org).

**Waltz Dance and Workshop.** 2:45-3:30 p.m. workshop, 3:30-6 p.m. dance at Spanish Ballroom at Glen Echo Park, 7300 MacArthur Blvd., Glen Echo. A social dancing workshop precedes a Waltz dance. The Waltz Weavers will provide the music for the waltzes and a variety of other couple dances. Admission is \$10. See [www.WaltzTimeDances.org](http://www.WaltzTimeDances.org), or email [info@waltztimedances.org](mailto:info@waltztimedances.org).

**Scrabble Scramble.** 6-9 p.m. at Bethesda North Marriott Hotel and Conference Center, 5701 Marinelli Road, Rockville. Scrabble Scramble benefiting the Literacy Council of Montgomery County will feature Scrabble, cocktails, hors d'oeuvres, dinner, auction and raffle. \$275 table of four, \$150 pair, \$75 individual. Visit [www.literacycouncilmcmd.org/scrabble-scrabble/](http://www.literacycouncilmcmd.org/scrabble-scrabble/) to register.

**Book Talk.** 7:30 p.m. at Beth Shalom Congregation and Talmud Torah, 11825 Seven Locks Rd, Potomac. Aaron Leibel will discuss his new novel Generations: The Story of a Jewish Family. All are welcome. Free. For further information email

[library@bethsholom.org](mailto:library@bethsholom.org).

## SATURDAY/APRIL 11

**"Clara Barton: Red Cross Angel."** 2 p.m. at Clara Barton National Historic Site, 5801 Oxford Rd., Glen Echo. After an interactive performance by Mary Ann Junh, explore the historic home of the founder of the American Red Cross Clara Barton. Free. Visit [www.nps.gov/clba/special-events.htm](http://www.nps.gov/clba/special-events.htm).

**Bach's "St. John Passion."** 8 p.m. at The Strathmore, 10701 Rockville Pike, Rockville. The ational Philharmonic Orchestra and Chorale perform Bach's "St. John Passion" as conducted by Victoria Gau. Tickets start at \$28 and free for children ages 7-17.

## SUNDAY/APRIL 12

**Horizons 5K Run/Walk and Fun Run.** 9:15 a.m. at The Norwood School, 8821 River Road, Bethesda. All proceeds from this run will benefit Horizons Greater Washington, a nonprofit organization that develops public-private partnerships between independent and public school communities. Registration is \$35. Visit [www.imathlete.com/events](http://www.imathlete.com/events).

## FRIDAY-SUNDAY/APRIL 17-19

**Sugarloaf Crafts Festival.** 10 a.m. - 6 p.m., Friday and Saturday; 10 a.m. - 5 p.m., Sunday at The Montgomery County Fairgrounds, 16 Chestnut St., Gaithersburg. More than 250 artists will present their crafts for purchase. Visit [www.sugarloaforcrafts.com](http://www.sugarloaforcrafts.com).

## SATURDAY/APRIL 18

**Copper Jewelry Workshop.** 10 a.m. - 5 p.m. at VisArts at Rockville, 155 Gibbs St., Rockville. Participants will be introduced to a non-acid technique to create textures on copper. Tuition is \$90. Visit [www.visartsatrockville.org](http://www.visartsatrockville.org).

**Washington Conservatory 2014-15 Piano Plus Concerts.** 8 p.m. Westmoreland Congregational United Church of Christ, 1 Westmoreland Circle, Bethesda. Concert series features members of the Washington Conservatory faculty and guest artists. Free (pay-as-you-can, donations welcome). Visit [www.washingtonconservatory.org](http://www.washingtonconservatory.org) or call 301-320-2770 for more.

**"Bach's Early Voice."** 8 p.m. at Cultural Arts Center in Silver Spring, Montgomery College, 7995 Georgia Ave., Silver Spring. The Bach Sinfonia presents "Bach's Early Voice: The Weimar Cantatas." \$15-\$35. Visit [www.bachsinfonia.com](http://www.bachsinfonia.com).

**Tom Cunningham Orchestra.** 9

p.m. at the Spanish Ballroom in Glen Echo Park, 7300 MacArthur Blvd., Glen Echo. The Tom Cunningham Orchestra will be performing a three-hour set of Duke Ellington's music, with special focus on the "Blanton-Webster years." Tickets are \$18. Call 571-572-3356.

## SUNDAY/APRIL 19

**Tiger Trot.** 8:30 a.m. at Connelly School of the Holy Child, 9029 Bradley Blvd., Potomac. This 5K Run/Walk through the streets of Potomac will benefit the Holy Child Health and Wellness Programs and The Cabin John Park Volunteer Fire Department. Registration fees are \$35 for adults, \$30 for 19 and younger. Online registrations before April 10 will receive a \$5 per registrant discount. Visit [www.holychild.org/support/tiger-trot/index.aspx/](http://www.holychild.org/support/tiger-trot/index.aspx/).

**Chain Maille Workshop.** 10 a.m. - 5 p.m. at VisArts at Rockville, 155 Gibbs St., Rockville. In this introductory Chain Maille Jewelry Workshop you will learn two different classic weaves that can be applied to a variety of jewelry. Tuition is \$95. Visit [www.visartsatrockville.org](http://www.visartsatrockville.org).

## FRIDAY/APRIL 24


**Rummage Sale.** 9 a.m. - 8 p.m. at St. James' Episcopal Church, 11815 Seven Locks Road, Potomac. Visit [www.stjamespotomac.org](http://www.stjamespotomac.org).

## SATURDAY/APRIL 25


**Rummage Sale.** 9 a.m. - 8 p.m. at St. James' Episcopal Church, 11815 Seven Locks Road, Potomac. Visit <http://www.stjamespotomac.org>.  
**An Evening with Julie Andrews.** 5:30 p.m. at The Strathmore, 10701 Rockville Pike, Rockville. "The Sound of Music" actress Julie Andrews will attend the Strathmore's 10th anniversary Spring Gala. The evening will include a Q&A and discussion. Gala ticket packages can be purchased by calling 202-248-1930 or [Strathmore@sorellegroup.com](mailto:Strathmore@sorellegroup.com). Call 301-581-5100 or visit [www.strathmore.org](http://www.strathmore.org).

## SUNDAY/APRIL 26

**Paws in the Park.** 12-4 p.m. at Bohrer Park at Summit Hall Farm, 506 S. Frederick Ave., Gaithersburg. The 17th annual Paws in the Park event will feature a one-mile dog walk, pet contests, vendors, micro-chipping, rabies shots, food, music, and more. Tickets purchased online are \$20 for individuals and \$45 for families (3 or more related people). Onsite tickets are \$25 and \$55. Visit [www.mchumane.org/paws15.shtml](http://www.mchumane.org/paws15.shtml).



# RADON




## Are YOU At Risk?

Recent US Geological Survey (USGS) studies have found that many areas in our region are at risk of high Radon concentrations (4pCi/L or higher). Radon is the second leading cause of lung cancer after cigarettes, according to the Surgeon General. The EPA recommends that all homes be tested for Radon. **NextDay Inspect** professionals deliver detailed reports and recommendations. Remediation is simple and inexpensive and it will save lives!


**Call Today!**

**10% Off For Radon Level Testing**

**Regular \$149!**



**www.NDInspect.com**  
(703) 450-6398



■ - HIGH RISK
 ■ - MEDIUM RISK
 ■ - LOW RISK
  - NOT SAMPLED

## Potomac Village Deli Catering

Breakfast • Lunch • Dinner Catering

**301-299-5770**

[www.potomacvillagedeli.com](http://www.potomacvillagedeli.com)



Home of Your  
Corporate & Residential  
Catering Headquarters

Serving the  
Community  
for over  
35 Years





# Mitzvah! adness!

## A SHOWCASE OF SIMCHA SERVICES

# 866.WTA.3836

## REGISTER TODAY

# WASHINGTONTALENT.COM



# Potomac REAL ESTATE

PHOTOS BY DEB STEVENS/THE ALMANAC

January, 2015 Sales,  
\$655,000~  
\$950,000

IN JANUARY 2015,  
27 POTOMAC HOMES SOLD BETWEEN  
\$5,500,000-\$330,000.

**1 4 Gate Post Court —  
\$950,000**



**3 9300 Winterset Drive —  
\$870,000**



**2 10503 Streamview Court — \$938,888**



**7 12016  
Gateway Drive —  
\$655,000**



**6 8509 Aqueduct Road — \$670,000**



**4 8 Infield Court North — \$794,000**



Address .....	BR	FB	HB	...	Postal	City ..	Sold Price ....	Type .....	Lot AC ..	PostalCode .....	Subdivision .....	Date Sold
<b>1</b> 4 GATE POST CT .....	4	..	4	..	0	POTOMAC	..... \$950,000	Townhouse	0.09	..... 20854	RIVER FALLS	01/30/15
<b>2</b> 10503 STREAMVIEW CT .....	4	..	3	..	1	POTOMAC	..... \$938,888	Detached	0.31	..... 20854	EAST GATE OF POTOMAC	01/21/15
<b>3</b> 9300 WINTerset DR .....	5	..	2	..	1	POTOMAC	..... \$870,000	Detached	0.34	..... 20854	WINTerset	01/26/15
<b>4</b> 8 INFIELD CT N .....	4	..	2	..	1	ROCKVILLE	..... \$794,000	Detached	0.27	..... 20854	FALLSMEAD	01/16/15
<b>5</b> 12005 REYNOLDS AVE .....	4	..	3	..	1	POTOMAC	..... \$750,000	Detached	0.40	..... 20854	WILLERBURN ACRES	01/05/15
<b>6</b> 8509 AQUEDUCT RD .....	4	..	3	..	1	POTOMAC	..... \$670,000	Detached	0.26	..... 20854	MONTGOMERY SQUARE	01/21/15
<b>7</b> 12016 GATEWATER DR .....	4	..	3	..	1	POTOMAC	..... \$655,000	Townhouse	0.09	..... 20854	FALLSBERRY	01/05/15

COPYRIGHT 2015 REAL ESTATE BUSINESS INTELLIGENCE. SOURCE: MRIS AS OF FEBRUARY 16, 2015.



# SPORTS

## Churchill Boys' Lax Opens With Victory

The Churchill boys' lacrosse team opened the 2015 season with a 23-2 win over Kennedy at home on Monday.

After winning back-to-back 4A/3A West region championships, the Bulldogs lost to rival Wootton in last year's region final. Led by Maryland signee Louis Dubick, Churchill is looking to return to the state tournament.

Next up for Churchill is a home game against Damascus at 7 p.m. on Thursday, March 26.

## Churchill Girls' Lax Thumps Northwest

The Churchill girls' lacrosse team throttled Northwest 17-2 in its season opener on March 21 at Wootton High School.

Next up for the Bulldogs is a road game at Damascus at 7 p.m. on Thursday, March 26.

## Wootton Boys' Lax To Host Glenelg

The defending 4A/3A West region champion Wootton boys' lacrosse team will host perennial power Glenelg at 7 p.m. on Friday, March 27.

The Patriots opened the 2015 season Tuesday against Damascus, after The Almanac's deadline.

## Whitman Baseball Shuts Out Blake

The Whitman baseball team opened the 2015 campaign in convincing fashion, blanking Blake 10-0 in six innings.

The Vikings scored seven runs in the first inning and cruised to victory.

Sam Berson earned the victory for Whitman, allowing two hits while striking out four in six shutout innings.

Ben Rosenblatt went 3-for-3 with two doubles and a pair of RBIs. Ian Atkinson finished 2-for-3 with two RBIs. Jack Prill was 1-for-2 with a double and three runs, and Evan Koretsky went 2-for-4 with a double and three RBIs.

Whitman faced Quince Orchard on Tuesday, after The Almanac's deadline. The Vikings will travel to face Gaithersburg at 3:30 p.m. on Wednesday, March 25.

## Wootton Baseball Wins Big

The Wootton baseball team thumped Einstein 17-2 in its season opener on March 23.

The Patriots faced Sherwood on Tuesday, after The Almanac's deadline.

Next up for Wootton is a home game against Blair at 3:30 p.m. on Thursday, March 26.

## HOME SALES

In February 2015, 23 Potomac homes sold between \$1,450,000-\$480,000.

Address	BR	FB	HB	Postal City	Sold Price	Type	Lot AC	Postal Code	Subdivision
13304 BEALL CREEK CT	6	4	1	POTOMAC	\$1,450,000	Detached	2.37	20854	BEALLMOUNT
12301 BEALL SPRING RD	5	5	1	POTOMAC	\$1,335,000	Detached	2.28	20854	BEALLMOUNT
7805 PEARSON KNOLL PL	5	4	1	POTOMAC	\$1,310,000	Townhouse	0.04	20854	PARK POTOMAC
9820 AVENEL FARM DR	5	4	1	POTOMAC	\$1,275,000	Detached	0.50	20854	AVENEL
9401 TURNBERRY DR	4	4	1	ROCKVILLE	\$1,050,000	Townhouse	0.13	20854	AVENEL
11005 HOMEPAGE LN	5	3	1	POTOMAC	\$940,000	Detached	2.77	20854	PINEY GLEN FARMS
8512 HORSESHOE LN	4	3	0	ROCKVILLE	\$850,000	Detached	2.00	20854	POTOMAC RANCH
11325 BEDFORDSHIRE AVE	5	3	1	POTOMAC	\$850,000	Detached	0.30	20854	BEDFORDSHIRE
10410 CROSSING CREEK RD	5	3	0	POTOMAC	\$839,000	Detached	0.29	20854	EAST GATE OF POTOMAC
11728 TRAILRIDGE DR	4	3	0	POTOMAC	\$808,000	Detached	0.36	20854	ROBERTS GLEN
11208 LONG PINE TRL	4	4	0	POTOMAC	\$800,000	Detached	0.42	20854	WILLOWBROOK
11820 GREGERSCROFT RD	5	2	1	POTOMAC	\$785,000	Detached	0.37	20854	GLEN OAKS
2607 OAKENSHIELD DR	5	3	1	ROCKVILLE	\$770,000	Detached	0.25	20854	POTOMAC WOODS EAST
9416 HOLBROOK LN	4	2	1	POTOMAC	\$750,000	Detached	0.37	20854	TIMBERWOOD OF POTOMAC
13547 FLOWERFIELD DR	3	3	1	POTOMAC	\$710,000	Townhouse	0.06	20854	POTOMAC GLEN
13553 FLOWERFIELD DR	4	2	2	ROCKVILLE	\$705,000	Townhouse	0.08	20854	PINEY GLEN VILLAGE
42 ORCHARD WAY N	4	3	1	POTOMAC	\$690,000	Detached	0.53	20854	FALLS ORCHARD
11 AQUEDUCT CT	4	3	1	POTOMAC	\$630,000	Detached	0.30	20854	MONTGOMERY SQUARE
11503 REGENCY DR	4	2	1	POTOMAC	\$620,000	Detached	0.26	20854	REGENCY ESTATES
11720 AMBLESIDE DR	4	3	1	ROCKVILLE	\$605,000	Detached	0.66	20854	ROBERTS GLEN
18 BENTRIDGE CT	3	2	1	POTOMAC	\$560,000	Townhouse	0.05	20854	FALLSREACH
9710 PLEASANT GATE LN	4	3	0	POTOMAC	\$508,000	Detached	0.05	20854	AVENEL
10654 MUIRFIELD DR	3	3	1	POTOMAC	\$480,000	Townhouse	0.03	20854	INVERNESS NORTH

Copyright 2015 RealEstate Business Intelligence. Source: MRIS as of March 13, 2015.

## BULLETIN BOARD

### FROM PAGE 5

who have lost a loved one to suicide. Call 302-816-2708 to register.

### ONGOING

**English Classes.** The Literacy Council of Montgomery County is offering free day and evening English classes — beginning, intermediate and advanced levels — to adult county residents at several locations.

Prospective students must attend a 3 1/2 hour orientation in Rockville. Call 301-610-0030.

**Shades of Green Program.** The Montgomery County Planning Department is offering free trees to qualifying property owners in certain urban districts of Montgomery County. Qualifying property owners are invited to participate in the program by filling out a form at [www.montgomeryplanning.org/](http://www.montgomeryplanning.org/)

shadesofgreen.

**Catholic Bible Study.** Monday evenings and Wednesday mornings at Our Lady of Mercy Catholic Church, 9222 Kentsdale Drive, Potomac. The local chapter of "Walking With Purpose" invites women to personal study, small group discussion and speakers designed to link everyday challenges with biblical teaching. Childcare available. Visit [walkingwithpurpose.com](http://walkingwithpurpose.com).

**Roy Zhou** and **Alice Xu** of Potomac have been named to the merit list for the fall 2014 semester at Oxford College (Atlanta, Ga.).

**Jacob Magin, Juliane Wiese, Benjamin Harris, and Katherine Sotos** of Potomac have been named to Colgate University's (Hamilton, N.Y.) dean's list for the fall 2014 semester.

lost (adj): 1. unable to find the way. 2. not appreciated or understood. 3. no longer owned or known

## Adopt Donate Volunteer

[lostdogandcatrescue.org](http://lostdogandcatrescue.org)



## LET'S TALK Real Estate



by Michael Matese

## Tips for Modern Luxury Home Trends

### Go Green

Luxury home construction firms have taken note of the market's trend towards sustainable housing that incorporates green living into the architecture and home's features. Non-toxic building materials, sustainable construction, alternative energies and solar paneling are just a few of the ways modern luxury homes are going green.

### Security

Safety and security are primary concerns for all homeowners; in luxury homes, safety and security when coupled with modern technology are an unbeatable combination that is attractive to the buyer, comforting to the owner and invaluable to the seller—privacy measures, secure wireless home networks, state of the art security systems and whole-house backup generators are some of the most in-demand amenities in the current market of luxury homes.

### Technology

When designing or re-designing luxury homes, a few new considerations to make are to allow for a greater access to technology throughout the whole house, not simply relegating access to dens, offices and living room suites. Today's luxury homeowner places a greater emphasis on telecommuting, home media rooms and whole-house wireless networks—these days, technology is both for business and for entertainment and the modern luxury home should reflect that.

For professional advice on all aspects of buying and selling real estate, call:

**MICHAEL MATESE**  
Long & Foster Realtors  
**301-806-6829**

Mike@michaelmatese.com



## PHOTO GALLERY!

## "Me and My Mom"

To honor Mom on Mother's Day, send us your favorite snapshots of you with your Mom and The Potomac Almanac will publish them in our Mother's Day issue. Be sure to include some information about what's going on in the photo, plus your name and phone number and town of residence. To e-mail digital photos, send to:

[almanac@connectionnewspapers.com](mailto:almanac@connectionnewspapers.com)

Or to mail photo prints, send to: The Potomac Almanac, "Me and My Mom Photo Gallery," 1606 King St., Alexandria, VA 22314.

Photo prints will be returned to you if you include a stamped, self-addressed envelope, but please don't send us anything irreplaceable.



# CLASSIFIED

ZONE 5: POTOMAC  
AD DEADLINE: MONDAY NOON • 301-778-9411

## 26 Antiques

We pay top \$ for STERLING, MEN'S WATCHES, JEWELRY, COSTUME JEWELRY, FURNITURE, PAINTINGS AND CLOCKS. Schefer Antiques 703-241-0790 theschefer@cox.net

**Find us on Facebook and become a fan!**

[www.Facebook.com/connectionnewspapers](http://www.Facebook.com/connectionnewspapers)

**THE CONNECTION**  
Newspapers & Online  
The Connection to Your Community  
[www.connectionnewspapers.com](http://www.connectionnewspapers.com)

## 21 Announcements

## 21 Announcements

## 21 Announcements

## Outer Banks, North Carolina - Vacation Rentals



- Over 600 vacation homes in all price ranges!  
- Kitty Hawk, Kill Devil Hills, Nags Head, and Southern Shores to Corolla  
- 2 to 18 bedrooms most with private pool/hot tub  
- Linens and towels are provided (call for exception)

*Reserve your family vacation today!*

877-642-3224 . [www.brindleybeach.com](http://www.brindleybeach.com)

## 21 Announcements

## 21 Announcements

## 21 Announcements

**THIS AD FOR SALE!**

**MDDC Press Service**  
2000 Capital Drive, Annapolis, MD 21401

**SPREAD YOUR MESSAGE**  
to over 4 Million readers  
with an ad this size for  
just \$1,450! For a limited  
time, **BUY 4 ADS,**  
**GET ONE FREE!\***

**CALL TODAY!**

**1-855-721-6332**  
Wanda Smith, ext. 6  
[www.mddcpress.com](http://www.mddcpress.com)

\*Certain conditions apply.

## 21 Announcements

## 21 Announcements

## 21 Announcements

## WET BASEMENTS STINK !!

Mold, mildew and water leakage into your basement causes health and foundation damage. What can be done to fix the problem? Allstate American Waterproofing is an honest, hardworking local company. We will give you a **FREE** evaluation and estimate and a fair price. We have repaired thousands of basements in the area; we can provide local references. When your neighbors needed waterproofing, they called Allstate American. Why don't you? Call now to receive a 20% discount with your **FREE ESTIMATE**. MHIC#36672

**CALL 1 800 420 7783 NOW!**

## HOW TO SUBMIT ADS TO

**THE CONNECTION**  
Newspapers & Online

## CLASSIFIED

### DEADLINES

Zones 1, 5, 6 ..... Mon @ noon  
Zones 2, 3, 4 ..... Tues @ noon

E-mail ad with zone choices to: [classified@connectionnewspapers.com](mailto:classified@connectionnewspapers.com) or call Andrea @ 703-778-9411

## EMPLOYMENT

### DEADLINES

Zones 1, 5, 6 ..... Mon @ noon  
Zones 2, 3, 4 ..... Tues @ noon

E-mail ad with zone choices to: [classified@connectionnewspapers.com](mailto:classified@connectionnewspapers.com) or call Andrea @ 703-778-9411

## ZONES

**Zone 1:** The Reston Connection  
The Oak Hill/Herndon Connection  
**Zone 2:** The Springfield Connection  
The Burke Connection  
The Fairfax Connection  
The Fairfax Station/Clifton/Lorton Connection  
**Zone 3:** The Alexandria Gazette Packet  
The Mount Vernon Gazette

**Zone 4:** Centre View North  
Centre View South  
**Zone 5:** The Potomac Almanac  
**Zone 6:** The Arlington Connection  
The Vienna/Oakton Connection  
The McLean Connection  
The Great Falls Connection

# HOME & GARDEN

POTOMACALMANAC.COM  
ZONE 5: POTOMAC  
AD DEADLINE: MONDAY NOON • 703-778-9411

## CARPENTRY

## CARPENTRY



- Laminates
- Cabinets
- Custom Woodwork

**(301) 937-4244**

**LIC. [www.dandsmillwork.com](http://www.dandsmillwork.com) INS.**

## IMPROVEMENTS

## IMPROVEMENTS

## A&S Landscaping

- All Concrete work
- Retaining Walls • Patios
- Decks • Porches (incl. screened) • Erosion & Grading Solutions
- French Drains • Sump Pumps
- Driveway Asphalt Sealing



**703-863-7465**

LICENSED

**Serving All of N. Virginia**

## LANDSCAPING

## LANDSCAPING

## GARDENER

Energetic gardener, Speaks French & English. Spring Cleanup, weeding, planting, edging, mulching, maintenance. Excellent Potomac references.  
**301-980-8258**

# EMPLOYMENT

ZONE 5: POTOMAC  
AD DEADLINE: TUESDAY 11 A.M. • 301-778-9411

## BUSINESS OPP

## BUSINESS OPP

**TELEPHONE**  
A great opportunity to  
**WORK AT HOME!**

**NATIONAL CHILDRENS CENTER**  
No sell! Salary + Bonus + Benefits!  
**301-333-1900**  
Weekdays 9-4

**TELEPHONE**  
A great opportunity to  
**WORK AT HOME!**

**NATIONAL CHILDRENS CENTER**  
No sell! Salary + Bonus + Benefits!  
**301-333-1900**  
Weekdays 9-4

## Educational Internships

Unusual opportunity to learn many aspects of the newspaper business. Internships available in reporting, photography, research, graphics. Opportunities for students, and for adults considering change of career. Unpaid. E-mail [internship@connectionnewspapers.com](mailto:internship@connectionnewspapers.com)

**THE CONNECTION**  
NEWSPAPERS

# Health Matters More



By KENNETH B. LOURIE

I realize money doesn't buy happiness, although I wouldn't mind renting it. Still, having money rather than not having it can't be all bad. And I can definitely appreciate how not worrying about it can contribute to a potentially less stressful, above-average quality of life, generally speaking (I'm well aware that if you don't have your health, you don't have nearly as much; don't I know it!). And though there are no guarantees in life, other than death and taxes, as the old saying goes; being able to say "yes" should be easier than saying "no" when all is said and done. And when all is not yet "said and done," and there are health issues which intersect with dollars and sense, the conflict can exacerbate an already difficult situation. Unfortunately, the two are not mutually exclusive, and one can experience both – simultaneously.

Being a "terminal" cancer patient hardly improves this situation, regardless of what is said or done. Somehow, somewhere, one has to find stress-relievers and mind-occupiers. If that release involves money, I'll just have to live with the consequences of my inaction. Although having rather than having not is a much better alternative, navigating without has not been an impossible task. Hopefully, I'm mature enough to take the good and dispose of the bad and use it to strengthen my resolve, not weaken it. Because no one, as my mother was fond of saying, "gets out of this life alive," and leaving a path of inappropriate behavior in your wake is likely not the road to find out (Cat Stevens).

But I'm not, necessarily, as I live and breathe, on any sort OF road to find out. I'm more on a path of least resistance. I'm trying to accentuate the positive and minimize the negative and put stress in my rear view window (yes, I still drive; I'm fine, mostly). However, there are impediments and obstacles to such blissful ignorance; I mean, happiness. Regular appointments with an oncologist and visits (I use that word loosely) to the Infusion Center every three weeks for chemotherapy tend to muddle that happiness, naive or otherwise. In addition, when nos get in the way of yeses, the benefits are less obvious. As much as I'd like to be a sport, I have less recourse now than I ever have and fewer alternatives to compensate for a potentially abbreviated pursuit of life, liberty and happiness. It's not as if I'm unable to provide for myself and my family, however; it's more that in so doing, I feel as if I'm inadvertently giving in to the pressure and making worse an already difficult-to-mange situation: stage IV, non-small cell lung cancer, which my oncologist originally characterized as "treatable but not curable;" try processing that when you're age 54 and you've just buried your widowed mother. Still, six-plus years post-diagnosis, maybe I'm here to stay?

Who knows, really? If I had fewer "normal" things on my mind, perhaps cancer and its devastating effect would be more on my mind? Which I wouldn't see as a positive. Actually, I would: I'm positive the effect would be negative. Maybe the fact that I've tried to maintain my status quo and not impose a "bucket list"/artificial deadline on myself has enabled me to stay in the game longer than was initially "prognosed." And I am extraordinarily lucky; I just wish that sometimes, the game came with fewer expenses.

Kenny Lourie is an Advertising Representative for The Potomac Almanac & The Connection Newspapers.

**THE CONNECTION**  
NEWSPAPERS

**CLASSIFIED**

*For Local...*

- Employment
- Employees
- Services
- Entertainment
- Announcements
- Real Estate
- Cars
- Trucks
- Vans
- RV's
- Boats
- Pets
- Yard Sales
- Crafts
- Hobbies
- And More!

*For All Your Advertising Needs...*

*It Works. Week After Week.*

**703 917-6400**

*Place Your Ad Today!*

**THE CONNECTION**  
to your community



# Collecting Shoes To Fight Against Poverty

FROM PAGE 3

Siegenthaler. “We hope to take a big step in providing the organization with the new and used shoes they need to keep making a difference for people in need both globally as well in the USA.”

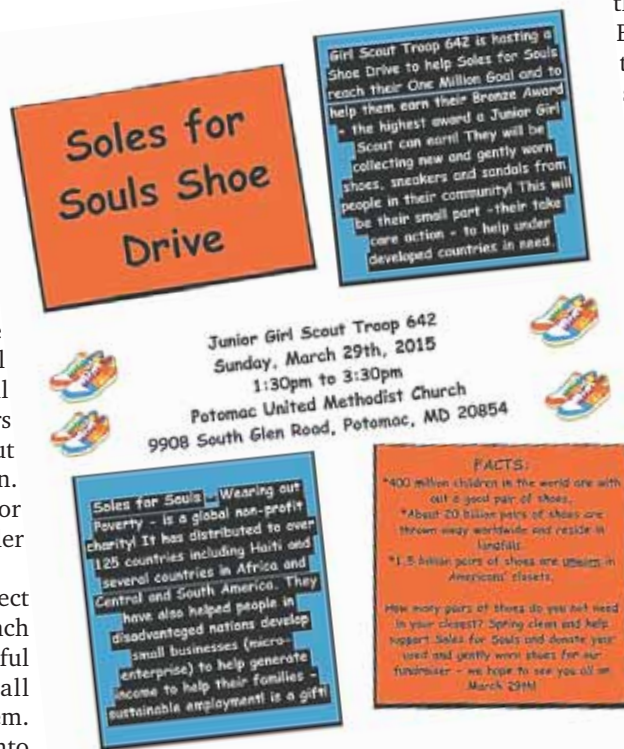
Siegenthaler explains that in order to earn a Bronze award, the girls must make the community aware of a need and involve them in the project. “The girls have put together poster boards and videos about the project. They are realizing how a local project can affect our entire world — local to global. We are hoping to collect 1,000 pairs of shoes and we have invited other Girl Scout troops to become involved with our mission. Any kinds of gently used shoes, slippers or sandals will be so appreciated,” Siegenthaler said.

The 10-year-olds are finding that the project has become exceptionally meaningful to each of them. Natalie Horton said, “It’s meaningful because this charity distributes shoes all around the world to people who need them. The people suffer from bacteria that get into their feet. Kids can’t go to schools without shoes and that means they can’t be educated.”

Isabella Shawl said, “I think it is really cool how the Soles4Souls organization also helps people in poor countries to start their own small businesses to sell the shoes.”

Hannah Emam is excited that “We are doing something that can change the world, just from a fundraiser.”

Anna Lydia Siegenthaler said, “It makes me feel good to know that we are helping so many children and adults around the world by giving them shoes and a more comfortable life.”



Anika Hukmani appreciates the opportunity to “give shoes to people who really need them and helping to decrease the poverty population — and making other countries a happier place.”

Anika Nagel realizes that “We are helping people all around the world — and making a difference.”

Used and new shoes should be brought to PUMC. The Girl Scouts will collect them, make certain they are fastened together and will share information about Soles4Souls and how

this fundraiser will help them collect their Bronze Award. Then the Girl Scouts and their parents will fill automobiles with the shoes and deliver them to Soles4Souls.

Soles4Souls was born out of responding to natural disasters both domestically and internationally. They maintain a “ready inventory” that can respond quickly to any disaster relief. On its website, it says, “While the U.S. was fortunate to not have a catastrophic disaster the magnitude of Katrina in 2007, our country still had an abundance of crisis across our nation. From the wildfires in Southern California, floods in the Mid-West, and the tornadoes in the Southeast, Soles4Souls were able to respond quickly and efficiently with needed footwear. Your ongoing support makes it possible for us to position ourselves to continue to meet the needs of others during their darkest hours.”

Sloane Seminara sums how she feels about participating in the project: “I feel good about myself because I am giving these shoes to someone who needs them. Although I do not know or never will know the person who receives these donations, I know that I am making someone happy — and that makes me happy.”

Reva Mannan says that “preparing for the project excites me because we have worked so hard — and are doing it for a great cause,” and Devika Mathur said, “I am excited because this is one of the first times I am taking part in a fundraiser — and I am looking forward to helping people in need and contribute to the fight against poverty.”

## Beth Sholom Hosts Annual Night of Camaraderie

FROM PAGE 3

as they want their children to see it lived. We can’t ask kids to ‘do as we say and not as we do’ — we have to ask them to do what we do. We need to teach them that acts of kindness are important — as important as living life with strong values.”

He continued: “Prepare, prepare, prepare” for the seder. Ask people who are coming to bring open-ended questions to be discussed around the table. Questions such as ‘What does it mean to be free?’ or ‘What is a home?’ or ‘What makes me feel connected to Judaism?’ Teaching the concept of gratitude is important too. It should be a special day that makes memories for everyone who celebrated Passover Seder with you and your family.”

Antine is thrilled that so many men attended this event. “This is wonderful — having a time when guys can just be together. I think we all



Alan Gross and Rabbi Nissan Antine

PHOTOS BY  
DAVID  
WASSERMAN



A commemorative glass.

share gratitude for our brotherhood. It’s also wonderful because rabbis from other synagogues come as well as senior management from the Washington Jewish Federation, Jewish Community Center, Israeli Embassy, FIDE, Technion, Israel Bonds, the Jewish Community Relations Council as well as a number of community business leaders.

Attendee David Farber summed up the evening: “Rabbi Antine’s dvar (lesson/short



talk) about role models was remarkable. And the evening remains a role model for us all in how to build community, donate charity, support others, all while having an enormous amount of fun — and ribs too!”

## POTOMAC ALMANAC

www.PotomacAlmanac.com

Newspaper of Potomac  
A Connection Newspaper

An independent, locally owned weekly newspaper delivered to homes and businesses.

1606 King Street  
Alexandria, Virginia 22314

Free digital edition delivered to your email box. Go to  
connectionnewspapers.com/subscribe

### PUBLISHER

Mary Kimm  
mkimm@connectionnewspapers.com  
@MaryKimm

### EDITORIAL

PHONE: 703-778-9415

E-MAIL:

almanac@connectionnewspapers.com

### EDITOR

Steven Mauren, 703-778-9415  
smauren@connectionnewspapers.com

### SPORTS EDITOR

Jon Roetman,  
703-752-4013  
jroetman@connectionnewspapers.com  
@jonroetman

### CONTRIBUTING WRITERS

Susan Belford, Carole Dell,  
Cissy Finley Grant, Carole Funger,  
Colleen Healy, Kenny Lourie,  
Ken Moore

### Contributing Photographers

Harvey Levine, Deborah Stevens

### Art/Design:

Laurence Foong, John Heinly  
Production Manager  
Geovani Flores

### ADVERTISING

For advertising information  
sales@connectionnewspapers.com  
703-778-9431

### ACCOUNT EXECUTIVES

Display Advertising:  
Kenny Lourie 703-778-9425  
klourie@connectionnewspapers.com

Andrea Smith 703-778-9411

Classified Advertising  
asmith@connectionnewspapers.com

### Debbie Funk

National Sales & real Estate  
703-778-9444  
debfunk@connectionnewspapers.com

### David Griffin

Marketing Assistant  
703-778-9431  
dgriffin@connectionnewspapers.com

### Jerry Vernon

Executive Vice President  
jvernon@connectionnewspapers.com

CIRCULATION: 703-778-9426  
circulation@connectionnewspapers.com

Potomac Almanac is published by Local Media Connection LLC

### Five Time First Place Award-Winner

Public Service  
MDDC Press Association

### Four Time Newspaper of the Year

An Award-winning Newspaper in Writing, Photography, Editing, Graphics and Design





# COME CELEBRATE “THIRSTY THURSDAYS” AT POTOMAC PIZZA!



## OPEN-CLOSE

\$2.00 BEER

1/2 PRICED BOTTLES OF WINE

Dine-in only. Please drink responsibly.

**CHEERS!**

## POTOMAC PIZZA.

[www.potomacpizza.com](http://www.potomacpizza.com)

Dine-in, Carry-out, Delivery & Catering

Serving Our Communities Since 1978

CHEVY CHASE POTOMAC TRAVILLE KENTLANDS

