

Produced by:



McLean  
Community  
Center  
*The Center of It All*



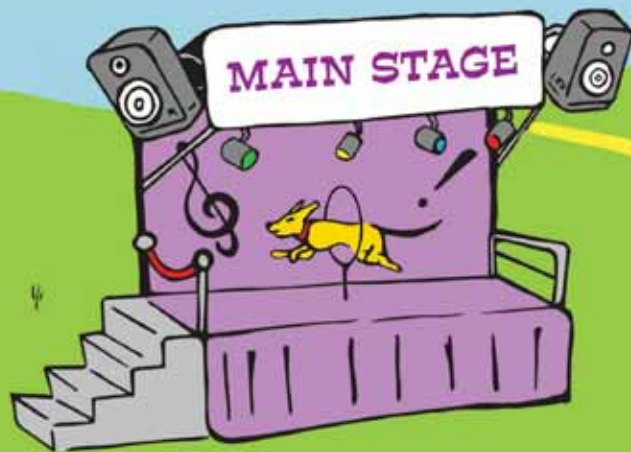
*Welcome to*

# McLEAN DAY

Est. 1915

SATURDAY, MAY 21 ★ 11 A.M.-5 P.M.  
FREE ADMISSION

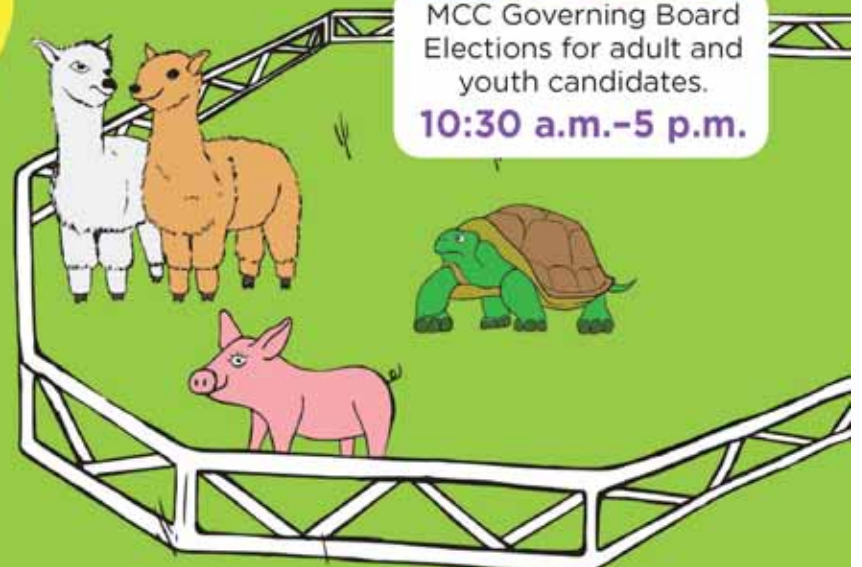
Lewinsville Park ★ 1659 Chain Bridge Rd. ★ McLean, VA 22101



MCC Governing Board  
Elections for adult and  
youth candidates.  
10:30 a.m.-5 p.m.

- ★ NEW! Children's Stage
- ★ Exhibitors
- ★ FREE Live Entertainment
- ★ FREE BumpBall®
- ★ FREE Petting Zoo
- ★ FREE Laser Tag
- ★ Amusements
- ★ Rides
- ★ Games

Petting  
Zoo



Visit [www.mcleancenter.org/special-events](http://www.mcleancenter.org/special-events) for more information

# ARLEIGH BURKE PAVILION



RSVP to  
703-538  
-2975

## *We're Having An Open House!*

Join us on May 24 from 11 a.m. - 1 p.m.!  
Can't make it? Call us for a private tour.

Located in idyllic McLean, Arleigh Burke Pavilion's Assisted Living apartments offer all the luxurious comforts of home within a vibrant Life Plan Community. Your loved one can enjoy the best of both worlds: the independence they're accustomed to, plus any help they may need with daily activities.



[www.ArleighBurke.org](http://www.ArleighBurke.org)

**1739 Kirby Road**

**McLean, Virginia 22101**

# MCLEAN DAY 2016



Children and adults alike enjoy carousel rides.

PHOTOS COURTESY OF MCC



Parking is not available at Lewinsville Park on the day of the festival, so MCC strongly encourages participants to use its free shuttle service.

## Small Town Feel Is Still Present at 101st McLean Day

The festival will be held on Saturday, May 21, from 11 a.m. to 5 p.m. at Lewinsville Park.

The McLean Community Center (MCC) is busy planning McLean Day 2016 using lots of new technologies in the process. However, Dranesville Small District 1A residents who attend the event, relish the small town feel they experience. The festival will be held on Saturday, May 21, from 11 a.m. to 5 p.m. at Lewinsville Park, 1659 Chain Bridge Rd. Admission is free.

### From Small Beginnings

McLean Day began in 1915 when the McLean School and Civic League sponsored a festival to raise funds for school and community projects. The first McLean Day was held in a field adjacent to Franklin Sherman School and featured a jousting contest. Various community organizations sponsored McLean Day, until MCC began producing the festival in the mid-1970s. It moved to its current home at Lewinsville Park in 1988.

### Vote for MCC Board Members

Sixteen district residents are running for seats on the 2016-2017 MCC Governing Board. Nine adults are vying for three adult seats and seven teens are vying for two student seats (one for Langley High School and one for McLean High School). The Center asks residents of Dranesville Small Tax Dis-



Popular amusement rides and games are available at the festival.

trict 1A, to cast their votes to elect and re-elect members to the 11-member Governing Board. The election will be held at the park from 10:30 a.m. to 5 p.m. The voting tent is located inside the entrance to the park. Residents may vote in advance by absentee ballot if they are unable to attend the festival through Wednesday, May 18. Voting instructions and candidate information are available at [www.mcleancenter.org](http://www.mcleancenter.org).

### Rides and More Amusements

Popular large amusement rides, including the Vertigo, the Orbiter, the Zipper, Full Tilt and Pharaoh's Fury, will return this year as well as the "Kids' Way" area, which features ticketed rides for young children. Close by is "Balloon Alley" with balloon artists and roaming costumed characters. Free laser tag and children's activities, such as BumpBall and Squeals on Wheels Petting Zoo, also are offered this year.

### Favorite Festival Foods and More

Come hungry to McLean Day! Food vendors as varied as the Red Hook Lobster Pound and Crepe Love, will join favorites The Tender Rib and the Rotary Club of McLean. Foodies will be delighted with an expanded menu that includes halal food by Fava Pot and new vegetarian options. And there will be lots of sweet treats! Stop by new vendor Captain Cookie and the Milkman or Scoops 2U, among others.

### Stage Entertainment Abounds

A Children's Stage has been added to the festival this year, with performances by professional children's musicians, Rolie Polie Guacamole, Yosi and the Superdads and Alex and the Kaleidoscope Band. Local chil-

dren will also perform as part of Bach to Rock's student band and Joy of Dance's performance groups. Adults will be able to savor the sounds of local bands, Odeon, Scott Ramminger and the Crawstickers and Kara and Matty D, as well as performers Tom Principato and hip-hop artist Christylez Bacon.

### Parking and Free Shuttle Service

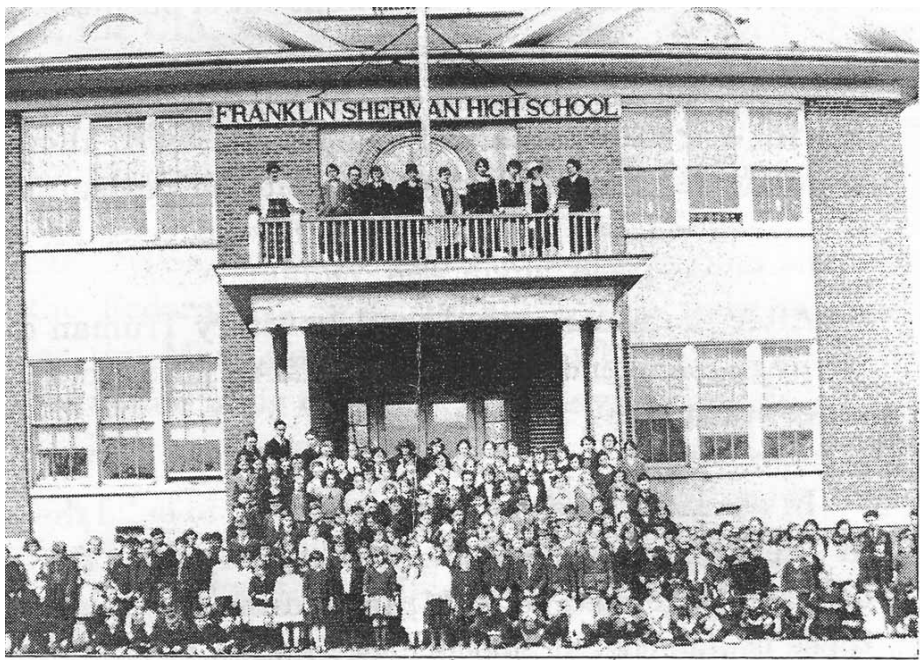
Parking is not available at Lewinsville Park on the day of the festival, so MCC strongly encourages participants to use its free shuttle service. Starting at 10:25 a.m. and continuing throughout the day, shuttle buses will run from the park to McLean Baptist Church, 1367 Chain Bridge Rd., Trinity United Methodist Church, 1205 Dolley Madison Blvd., and MCC, 1234 Ingleside Avenue. Due to a private event scheduled on May 21, Lutheran Church of the Redeemer, 1545 Chain Bridge Rd., will not have parking available onsite, nor will a shuttle bus service the parking lot.

### Let's All Have Fun

Alcohol, balloons, cigarettes and other controlled substances are not permitted on the park grounds. Political candidates and other vendors must contain their activities to their assigned booths. Soliciting is not allowed on the grounds of the park during McLean Day. Patrons are encouraged to be aware of their surroundings and to report suspicious activities to Center staff and Police and Fire personnel.

For festival updates, driving directions, shuttle bus stop locations and a festival area map, visit: [www.mcleancenter.org/special-events](http://www.mcleancenter.org/special-events) or call the Center at 703-790-0123/TTY: 711. The Center's telephone will be answered from 7 a.m. to 5 p.m. on the day of the festival.

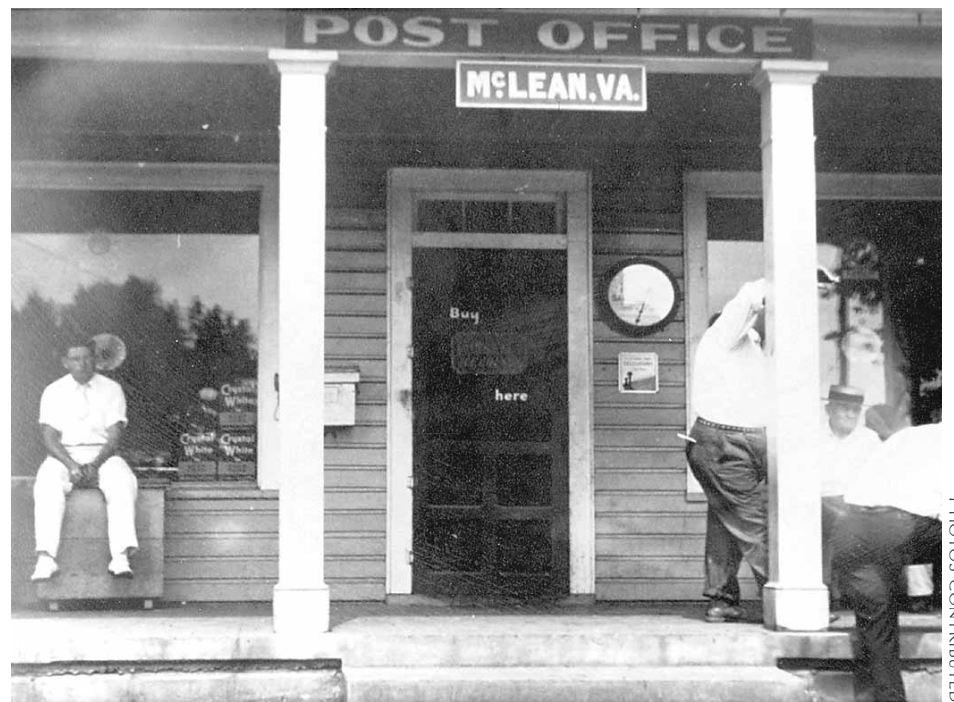
# McLEAN DAY 2016



Virginia Room, Fairfax County Public Library

Franklin Sherman School, around 1917

Students of Franklin Sherman High School pose in front of the building in 1917.



PHOTOS CONTRIBUTED

H.A. Storm's General Store and Post Office, which was located at the corner of Elm Street and Chain Bridge Road.

## McLean Day 101: A Beginner's Guide to the Festival's History

As McLean Day turns 101 this year, it presents a perfect opportunity to learn the history of the event. It was established in 1915 and was the first festival of its kind to be held in Fairfax County.

McLean Day 2016 will be held from 11 a.m. to 5 p.m. on Saturday, May 21, at Lewinsville Park, 1659 Chain Bridge Road. Produced by the McLean Community Center (MCC), the event is free and open to the public.

The first "McLean Day" was sponsored by the McLean School and Civic League, with the support of the McLean Volunteer Fire Department. It was held in an open field adjacent to the school. The purpose of the event was to raise funds for various school and community projects. The first festival went on for several weeks, unlike the one-day festival held today.

In the early years, the festival was held on the Saturday preceding the Democratic Primary in August, which made it as popular with political candidates seeking office as it was with the local residents. Attractions included carnival games, a baby show, dancing, performances and a lot of homemade refreshments. A favored event was the "jousting" tournament. Men, dressed as knights from the Middle Ages, rode horses at full gallop while attempting to place a lance through a tiny ring. The winner had the privilege of crowning his "lady" — "Queen of Love and Beauty."

While much has changed over the years, McLean Day's success is still due to the support of the community. Many McLean-

| Tournament   |  |  |
|--|--|--|
| <b>JUDGES</b>  | <b>OFFICIALS</b>   | <b>AIDES</b>   |
| Clifton Laughlin<br>F. L. Trammell<br>J. C. Storm  | Grand Marshal,<br>JOHN H. CARPER,<br>Assistant Marshal,<br>HENRY MAGARITY  | Miss Mirian Storm<br>Miss Beale Wells<br>Official Timekeeper, H. A. Storm. |
| Tournament Rules   |  |  |
| <b>ENTRANCE FEES</b>   |  |  |
| Professional .....   | \$2.50   |  |
| Amateur .....  | 2.00   |  |
| <b>PRIZES</b>  |  |  |
| <b>Professional Tournament:</b>  |  |  |
| 1st, \$25; 2d, \$15  |  |  |
| 3d, \$10; 4th, \$5.  |  |  |
| <b>Amateur Tournament</b>  |  |  |
| 1st, \$15; 2d, \$10  |  |  |
| 3d, \$5; 4th, \$4.   |  |  |
| Professional Tournament  |  |  |
| 1. Every rider to have four rides including trial ride.  | 10. If anything interferes with a knight while riding he must lower his lance, and return, and will be given that ride over. But if he does not lower his lance, an attempt at any ring is a go. |  |
| 2. Size of rings, 1 inch.  | 11. If a knight misses one or more rings, and fails to make time, he will not be allowed to ride over again at any rings missed.   |  |
| 3. First Tie Rings, 3-4 inch.  | 12. The decisions of the judges are final and must not be questioned. Any discourtesy shown to the judges will disqualify the contestant.  |  |
| 4. Second Tie Rings, 1-2 inch.   | 13. These rules will be strictly enforced and in no case will any entrance fee be returned to a knight disqualified for any infraction thereof.  |  |
| 5. Height of ring from ground, 6 feet, 9 inches.   |  |  |
| 6. Length of Lance, 7 feet.  |  |  |
| 7. Distance, 60 yards.   |  |  |
| 8. Time, 6 seconds (this means 6, not 6-1/2 or 6-3/4)  |  |  |
| 9. Any knight failing to make time will have to ride over again, if he fails on second attempt to make the required time he will be ruled out. |  |  |
| KNIGHTS ARE EXPECTED TO RIDE IN COSTUME.   |  |  |

There were a number of rules for the popular jousting tournament at McLean Day.

based, civic organizations participate at some level every year.

After MCC was established in 1975, the event was held at the Center. In 1989, after teaming up with many community groups, including the McLean Business and Professional organization (now the Greater McLean Chamber of Commerce), the Center moved McLean Day to its current location, Lewinsville Park. Today, McLean Day is as vital, strong and well-loved by the community as it has ever been.

The festival will be held rain or shine. For more information, contact the Center at 703-790-0123, TTY: 711, or visit: [www.mcleancenter.org/special-events](http://www.mcleancenter.org/special-events).

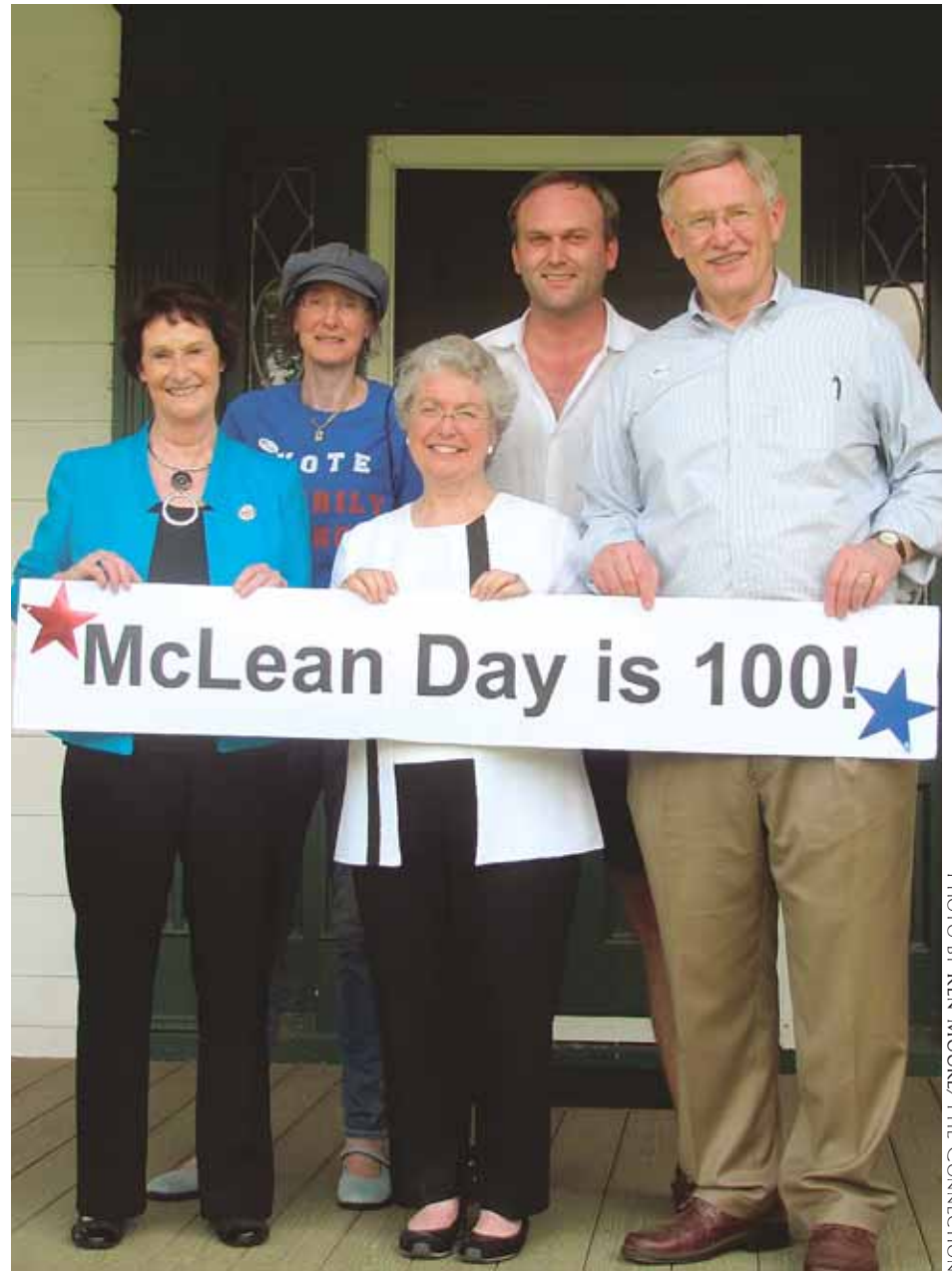


PHOTO BY KEN MOORE/THE CONNECTION

McLean Day turned 100 years old in 2015. In attendance: Board of Supervisors Chairman Sharon Bulova, School Board member Janie Strauss, Dranesville Supervisor John Foust and McLean historians Merrily Pierce and Paul Kohlenberger (back row).

# McLEAN DAY 2016

This year there is a new location for one shuttle stop—Trinity United Methodist Church.



PHOTO COURTESY OF MCC

## Take a Free Shuttle Ride to the Festival

There's a new location for one of three McLean Day 2016 shuttle stops.

As in years past, the McLean Community Center is encouraging patrons to park their cars and ride free shuttle buses to the McLean Day festival on May 21. However, this year there is a new location for one shuttle stop—Trinity United Methodist Church.

The event will be held from 11 a.m. to 5 p.m. at Lewinsville Park, 1659 Chain Bridge Road. Taking a shuttle is the best way for patrons to get to the park, as parking is prohibited at the park all day and parking on surrounding streets is limited. Patrons can use three free satellite parking lots and leave the driving to the festival's capable, experienced drivers. Fully

ADA-accessible, the shuttles will be available from 10:15 a.m. to 6 p.m. at the following locations:

- ❖ McLean Community Center, 1234 Ingleside Ave. Meet the shuttle at the Center's front entrance.
- ❖ McLean Baptist Church, 1367 Chain Bridge Road, across from Franklin Sherman Elementary School and Langley Shopping Center. Meet the shuttle in downtown McLean at the stop on Brawner Street.
- ❖ Trinity United Methodist Church, 1205 Dolley Madison Blvd. Patrons should meet the bus at the church entrance.

**Please Note:** Due to a private event scheduled on May 21, Lutheran Church of the Redeemer, 1545 Chain Bridge Road, will not have parking available onsite, nor will a shuttle bus service the parking lot. For more information, contact the Center at 703-790-0123/TTY: 711, or visit [www.mcleancenter.org/special-events](http://www.mcleancenter.org/special-events).



Equestrian Kingsley Muller, 6, enjoys a trip on the carousel at the McLean Day festival 2015.

PHOTO BY KEN MOORE/ THE CONNECTION

## Here's What's Happening at MCC

Onstage @ The Alden  
**ArtsPower's**  
**"Chicken Dance"**  
**Saturday,**  
**May 14, 2 p.m.**  
 \$15/\$10 MCC  
 district residents



### McLean Day 2016

**Saturday, May 21 • 11 a.m.–5 p.m.**



Lewinsville Park,  
 1659 Chain Bridge Rd.  
**Governing Board**  
**Elections:**  
 10:30 a.m.-5 p.m.

Classics of the Silent Screen  
**Buster Keaton's**  
**"The Cameraman" (1928)**  
**Tuesday, June 7, 7:30 p.m.**  
 \$12/\$8 MCC district residents

**The Old Firehouse**  
**Summer Kick-Off Party**  
**Friday, June 10, 7–9 p.m.**  
 \$25 OFTC Members/\$35 All others

Onstage @ The Alden  
**"Gut Churn"**  
**from Radiolab's Jad Abumrad**  
**Saturday, June 11, 8 p.m.**  
 \$30/\$15 MCC district residents

Onstage @ The Alden **Morgan Taylor's**  
**"Gustafer**  
**Yellowgold's Show"**  
**Sunday, June 12, 2 p.m.**  
 \$15/\$10 MCC district residents

Onstage @ The Alden  
**"The Magic of Bill Blagg Live!"**  
**Saturday, June 18, 8 p.m.**  
 \$20/\$15 MCC district residents

Insider Knowledge Series  
**"Jazz Masters with John Eaton"**  
**Cole Porter**  
**Saturday, June 25, 1 p.m.**

The McLean Community Center  
[www.mcleancenter.org](http://www.mcleancenter.org)  
 Home of the Alden Theatre  
[www.aldentheatre.org](http://www.aldentheatre.org)



1234 Ingleside Ave.,  
 McLean, VA 22101  
 703-790-0123, TTY: 711



# MCLEAN DAY 2016

**OAKCREST SCHOOL**  
INTELLECT CHARACTER LEADERSHIP FAITH

## College Acceptances

### Oakcrest Class of 2016

American University  
Ave Maria University (4)  
Belmont University  
Benedictine College  
Berkeley College of Music  
Boston College (2)  
Catholic University of America (12)  
Christendom College (4)  
Christopher Newport University  
Clark University  
Clemson University (2)  
College of the Holy Cross  
College of William and Mary (2)  
Culinary Institute of America  
DeSales University  
Duquesne University (2)  
Elon University  
Emory & Henry College  
Fairfield University (2)  
Franciscan University of Steubenville (2)  
George Mason University (5)  
Georgia Institute of Technology  
Harvard University  
High Point University

Hillsdale College  
Indiana University, Bloomington  
James Madison University (6)  
Johns Hopkins University (2)  
Johnson & Wales University, Providence  
Loyola University Maryland  
Lynchburg College  
Marymount University  
Michigan State University  
Middlebury College  
Mount St. Mary's University (3)  
New York University  
Northeastern University  
Old Dominion University  
Providence College (2)  
Purdue University (2)  
Radford University  
Salve Regina University  
Santa Clara University  
St. Mary's College of Maryland  
Texas A&M University  
The George Washington University  
Thomas More College of Liberal Arts  
United States Military Academy

Universidad de Navarra (2)  
University of California, Los Angeles  
University of Central Florida  
University of Dallas (10)  
University of Dayton  
University of Illinois at Chicago  
University of Kentucky  
University of Louisville  
University of Maryland, College Park (2)  
University of Nebraska, Lincoln  
University of Pittsburgh (2)  
University of San Diego (2)  
University of Scranton  
University of Texas, Austin  
University of Virginia (4)  
Villanova University (4)  
Virginia Commonwealth University (2)  
Virginia Polytechnic Institute and State University (4)  
West Virginia University (2)  
Worcester Polytechnic Institute  
Xavier University

*Ranked Most Challenging All-Girls School in the D.C. Area by The Washington Post*

Oakcrest.org

*An independent school for girls grades 6-12 guided by the teachings of the Catholic Church*



## Community is Having Fun

A Children's Stage has been added to the festival this year. Adults will be able to savor the sounds of local bands.

McLEAN COMMUNITY PLAYERS

Paul Slade Smith's

# Unnecessary FARCE

Two Cops, Three Crooks, Eight Doors!

FINAL WEEKEND!

ALDEN THEATRE, MCLEAN COMMUNITY CENTER

TICKETS: 866.811.4111 OR [WWW.MCLEANPLAYERS.ORG](http://WWW.MCLEANPLAYERS.ORG)

**MAY 13-14**

FRIDAY & SATURDAY AT 8 PM

SEE THE ACCESSIBILITY PAGE AT [WWW.MCLEANPLAYERS.ORG](http://WWW.MCLEANPLAYERS.ORG) FOR DATES OF AUDIO-DESCRIBED AND ASL INTERPRETED PERFORMANCES. THE MCLEAN COMMUNITY PLAYERS, INC. IS SUPPORTED IN PART BY THE ARTS COUNCIL OF FAIRFAX COUNTY. PRODUCED BY SPECIAL ARRANGEMENT WITH PLAYSCRIPTS, INC. | [WWW.PLAYSCRIPTS.COM](http://WWW.PLAYSCRIPTS.COM)

CONNECT WITH MCP: [FACEBOOK.COM/MCLEANPLAYERS](https://www.facebook.com/mcleanplayers) [YOUTUBE](https://www.youtube.com/mcleanplayers) [INSTAGRAM](https://www.instagram.com/mcleanplayers)

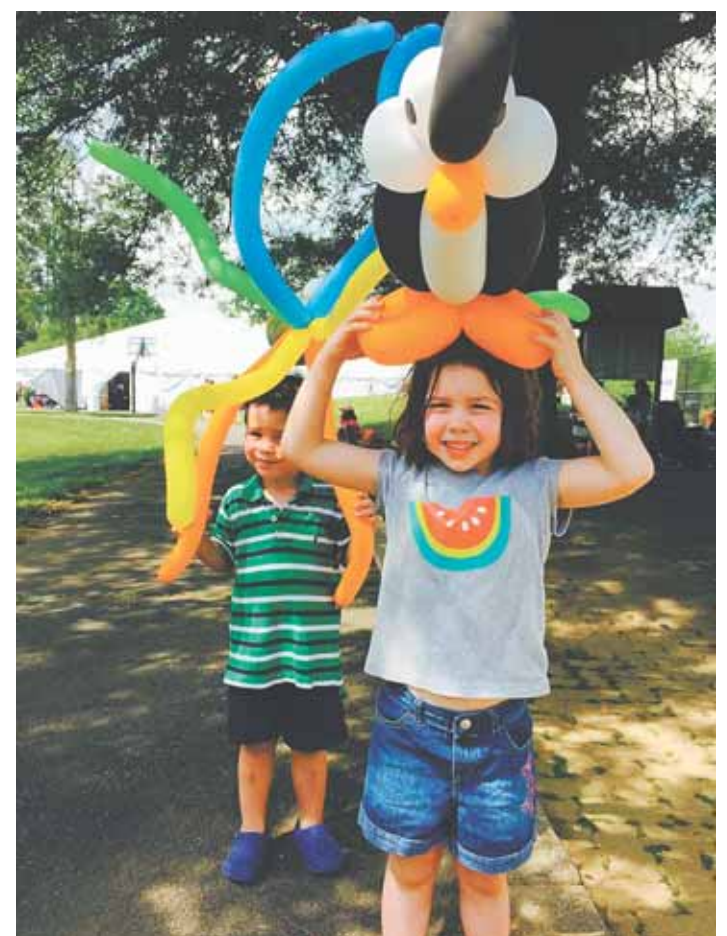


PHOTO BY KEN MOORE/THE CONNECTION

Anna Maria Davoli, 5, and her brother Paul, grew a foot taller at McLean Day's festival, which featured face painting, balloon animals, rides, music, civic groups education, a history walk and more.

# McLean Day 2016

Celebrating Our Hometown since 1915!

## Guide to Sponsors, Exhibitors and Food

(See Map, Pages 8,9)

### Sponsor in Part

| Company                                    | Tent |
|--|------|
| Wheat's Landscape                          | A    |
| Lynn Henrichs/State Farm Insurance Company | B    |
| Verizon                                    | C    |
| Washington Fine Properties, LLC            | D    |
| Giant Food                                 | E    |
| Squeals On Wheels                          | F    |
| McLean Properties                          |      |

### Exhibitors

|   |
|---|
| Iris Grundler                             |
| Live & Love Bracelets                     |
| McLean Historical Society                 |
| McLean Trees Foundation                   |
| OHM Creations                             |
| Plane Art                                 |
| Sovereign Treasures                       |
| The Bee Hive - Hair Buzz                  |
| Yan's Art Studio                          |
| AAUW-McLean Branch                        |
| Brookfield School                         |
| Chesterbrook Residences                   |
| Christian Science Reading Room            |
| Congresswoman Barbara J Comstock          |
| Dranesville District Democratic Committee |
| Earth Sangha                              |
| Fairfax County Board of Supervisors       |
| Fairfax County DFS Foster Care & Adoption |
| Fairfax County Office of Elections        |
| First Home Care                           |

For Children's Sake of Virginia  
Freedom Hill Chapter - NSDAR

|   |
|---|
| Friends of Pleasant Grove                           |
| Friends of the McLean Community Center              |
| Greater McLean Republican Women's Club              |
| Holy Trinity Church                                 |
| Immanuel Presbyterian Church                        |
| Langley Hill Friends Meeting                        |
| McLean Baptist Church                               |
| McLean Citizens Association                         |
| McLean Community Players                            |
| McLean Farmers' Market                              |
| McLean Project for the Arts                         |
| McLean Volunteer Fire Department                    |
| McLean Youth Athletics (MYA)                        |
| McLean Youth Soccer Fun Soccer                      |
| Navy Marine Coast Guard Residence Foundation        |
| Our Military Kids                                   |
| Pathways Ahead                                      |
| Paws of Honor                                       |
| Redeemer Lutheran Church                            |
| Safe Community Coalition                            |
| Shepherd's Center of McLean-Arlington- Falls Church |
| The Langley School                                  |
| Trinity United Methodist Church                     |
| Vinson Hall Retirement Community                    |
| Woman's Club of Virginia                            |

### Description

|   |     |
|---|-----|
| Pottery & Watercolor Painter                            | 082 |
| Accessorize for Spring & Summer                         | 006 |
| The Past for the Future                                 | 028 |
| Supporting McLean's Tree Canopy                         | 056 |
| Keep Calm & Bling On                                    | 016 |
| Original Affordable, Aviation Art Paintings             | 040 |
| Hand-Painted Glass for Dining & Entertaining            | 015 |
| Fun Handwoven & Stretchy Headbands                      | 029 |
| Recycled Copper Art Works                               | 007 |
| American Association of University Women                | 004 |
| Private Montessori School                               | 058 |
| McLean Affordable Assisted Living Community             | 081 |
| Spiritual Bookstore Bible Resources                     | 071 |
| Constituent Services Mobile Office                      | 064 |
| Organizing Democrats Because Elections Matter           | 048 |
| Volunteer for Arboretum in McLean                       | 079 |
| Supervisor John Foust Dranesville District              | 047 |
| Fairfax County Foster Care & Adoption                   | 035 |
| Serve Your Community Election Day!                      | 060 |
| Foster Care, Adoption, Community-based Services         | 005 |
| Nurturing Home Environment for Children                 | 014 |
| Historic Preservation, Education, Patriotism, Genealogy | 044 |
| Preserving & Promoting Historic Church                  | 027 |
| Support MCC & Join Friends Today!                       | 042 |
| Get Involved Please Join                                | 066 |
| For Believers & Inquirers Alike                         | 090 |
| Join Us in Changing Lives                               | 070 |
| Quakers: More Than Just Oatmeal                         | 024 |
| See What We're Up to                                    | 092 |
| 100 Years Old & Counting                                | 095 |
| See MCP's Footloose This July!                          | 067 |
| Farm to Table Locally Yours                             | 041 |
| Outstanding Visual Arts-Facepainting                    | 083 |
| First Aid   | 101 |
| Promoting Safe, Fun, Youth Sports                       | 063 |
| Activities for Kids                                     | 062 |
| Supporting Those Who've Served                          | 054 |
| Military Service is a Family Affair                     | 039 |
| For Brain-based Health Services                         | 057 |
| Retired Military Police Canines                         | 053 |
| Sharing Christ's Love at Redeemer                       | 093 |
| Keeping Youth Healthy & Safe                            | 045 |
| Seniors' Rides to Medical Offices                       | 002 |
| Educating Preschool through Grade 8                     | 077 |
| Open Hearts, Minds & Doors                              | 061 |
| McLean's Premier Retirement Community                   | 055 |
| 58 Years Serving the McLean Community                   | 038 |

### Food Concessionaire

Anita's Frozen Cotton Candy

Captain Cookie & the Milk Man

Crepes Love, LLC

Fava Pot

Oasis Concessions

Red Hook Lobster Pound

Reithofer Foods

Rotary Club of McLean

Scoops2U Ice Cream

The Big Cheese

The Tender Rib, Inc

### Menu

Original New Orleans Style Snowballs (Shaved Ice) & Bottled Water

Cookies, Assorted Flavors, Ice Cream Sandwiches, Local Creamery Milk, Water

Sweet & Savory Crepes: Nutella, Fraise Amour, Coco Loco, Monsieur, Jean's Dijon, Farmer Joe, S'more, Carnivale, Water

Platters/Wraps: Falafel, Cornish Hen, Chicken Kabob; Roasted Potatoes, Stuffed Grape Leaves, Baklava, San Pellegrino, Hibiscus Tea, Water

Frozen Smoothies & Lemonade, Shaved Ice Regular & Sugar-Free, Cotton Candy, Mini Doughnuts, Popcorn

Maine Lobster Rolls, Shrimp Rolls, Clam Chowder, Lobster Mac & Cheese, Coleslaw, Potato Salad, Chips, Drinks, Whoopie Pies

Popcorn, Corndogs, Funnel Cakes, Ice Cream, Soda, Water

High-Quality Hotdogs, Pizza, Chips, Soda, Water

Ice Cream, Sorbet, Chipwiches, Novelty Ice Cream Bars, Water

Grilled Cheese Sandwiches: The Full Vermonty, Thrilled Cheese, Caprese, Fuji, Kids' Grilled Cheese. Gazpacho, Lemonade, Water

Beef Brisket, Cheeseburgers, Chicken Tenders, Pulled Pork, Ribs, French Fries, Lemonade, Sweet Tea, Water

### Exhibitors

Adaptable Minds  
Adelphia Exteriors  
Adrenaline Studio  
Bach To Rock  
Barston's Child's Play  
BASIS Independent McLean

Bath Fitter  
British Swim School  
C2 Education  
Capitol Canine Club  
Chain Bridge Bank  
Comstock for Congress  
Country Day School  
Dental Care of McLean  
EDGE Energy  
Georgetown Learning Centers  
Greater McLean Chamber of Commerce  
Heartland Home Foods  
Island Children's Dentistry  
John Nugent & Sons  
Joy of Dance  
Keevornel, Inc  
Kitchen Saver  
Language Stars  
Leah B Price, LLC  
M&T Bank  
Mary Kay Cosmetics  
Mathnasium of McLean  
Morocco Premier Events & Showroom  
Mosquito Shield  
NOVA Center for Alternative Medicine

Nova Soccer Academy LLC  
Nu Look Home Design, Inc  
Old Dominion Animal Health Center  
Olde Town Pet Resort

Pink Blinds & Shutters Interiors, LLC  
Principal Medical Group  
Pure Barre  
Red Carpet Remodeling  
Salon Sage  
Savatree  
Sonabank  
Stearns Home Loans  
Sunshine Contracting  
The Tea Center, LLC

The Window Place Renewal By Andersen  
TopNotch Tennis  
Twintech, LLC  
Weichert Realtors  
Westgate Child Center

Wylder Brothers  
Earthwear Tie Dyes  
Evermay Bees, LLC  
G Henna Design, LLC  
Green Bands LLC

### Description

Speech Language Pathologist  
For Your Home Improvement Needs  
Competitive Dance, Camp, Tumble & Cheer  
Camps, Lessons, Birthday Parties, More!  
We Know Books & Toys!  
Nationally-ranked Pre-K-12  
Liberal Arts & STEM  
We're the Perfect Fit!  
Survival & Swim with BSS  
C2 Education Learning Centers Be Smarter  
Doggie Daycare & Pet Resort  
McLean's Community Bank  
Working for You  
Learning=Children+Teachers+Nature+Play  
Extraordinary Dentistry for Ordinary People  
Home Energy & Solar Services  
Test Prep & Academic Tutoring  
Join.Connect. & Grow. GMCC  
Farm to Home Delivery Service  
Creating Beautiful Smiles  
Certified Licensed Home Comfort Specialist  
Inspiring Young Dancers!  
Together for a Sustainable World  
Sign up for \$500-off Coupon  
Full-Immersion Language Programs for Kids!  
For All Your Styling Needs  
Understanding What's Important  
Discover What You Love!  
The Math Learning Center  
Your Gateway to Morocco  
Outdoor Mosquito & Tick Control  
Acupuncture, Chiropractic, Diet, Nutrition, Alternative

Private Lessons, Coaching, Summer Camps  
Windows, Roofing, Siding, Doors, Gutters  
For All Your Pets' Needs  
Boarding, Day Camp, Grooming, Swimming, Luxury  
Energy-Efficient Shutters Made in USA  
Personalized Health Care  
Lift, Tone, Burn  
Exterior Remodeling, Roofing & Windows  
Love is in the Hair!  
Tree Care, Shrubs, Lawn, Ticks, Deer  
Banking as it Should Be  
Lender Who Meets Your Needs!  
For Your Home Improvement Needs!  
Prestigious Summer Camp, Leadership Institute

Most Named in Windows  
Fun Tennis Games and Activities  
Service-Focused, Quality-Driven  
Serving McLean for 25 Years!  
www.Westgatechildcenter.org; Ages 2.5-12 Years  
Expect More from Your Realtor  
Kids & Adults Tie Dyes  
Local Honey & Hand-crafted Soaps  
Exotic & Natural Henna Tattoos!  
Beautiful Headbands for Women

### Space

017  
080  
074  
097  
010  
012  
087  
089  
034  
051  
043  
065  
088  
050  
008  
069  
098  
011  
049  
026  
099  
025  
030  
059  
036  
073  
085  
018  
020  
075  
009  
096  
013  
052  
078  
003  
022  
023  
086  
032  
084  
068  
100  
076  
072  
019  
TENNIS  
033  
094  
031  
091  
046  
037  
001  
021

Welcome to  
**McLEANDAY**  
Est. 1915

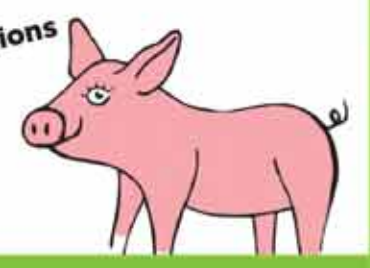
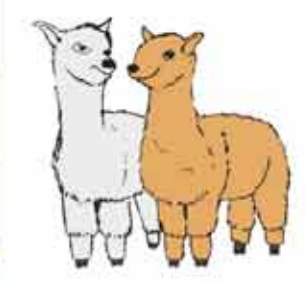
**Lewinsville Park**  
1659 Chain Bridge Rd.  
McLean VA, 22101

Rain or shine

**SATURDAY, MAY 21 • 11 A.M.-5 P.M.**  
McLean Community Center Governing Board Election • 10:30 a.m.-5 p.m.

Thanks to all of our sponsors

Agent Lynn Heinrichs  
703-827-0377  
www.lynnheinrichs.com



CHAIN BRIDGE ROAD

MAIN ENTRANCE

INFO 1

**Legend**

- Rides / Games
- Shuttle Bus
- Info Tents
- Exhibitor Booths
- Port-a-Johns
- Main Walkways
- Stages
- Ambulance
- Fire Truck
- Voting Tent
- Sponsor Tents
- Food

CANDIDATE ROW



INFO 2



VOTING TENT

MARKET PLACE TENT  
Exhibitors #1-46

FREE TENNIS CLINIC

MAIN STAGE

INFO 4

SPONSORS ROW

KIDS' GAMES  
Exhibitors • #63-82

FOOD COURT

WHITE HOUSE  
RIVERBEND PARK  
NATURALIST  
PRESENTATION

PICNIC AREA

PETTING ZOO

CHILDREN'S STAGE

PICNIC AREA

BALLOON ALLEY

Exhibitors • #83-101

INFO 5

FIRST AID

NATHANIEL LANE

**Stage Schedule:**  
11 a.m. Scott Ramminger & the Crawstickers  
Noon Kara and Matty D  
1 p.m. Tom Principato  
2 p.m. TBA  
3 p.m. Teen Character Awards  
3:15 p.m. Bach2Rock Student Band  
4 p.m. Odeon

**White House**  
Riverbend Park Naturalist Presentations  
Noon and 3 p.m.

www.mcleancenter.org

Produced by the McLean Community Center



# MCLEAN DAY 2016



**Christylez Bacon.**



**Rolie Polie Guacamole.**

## New Children's Stage Brings Additional Entertainment to McLean Day 2016

Two stages offer performances for the young and the young-at-heart.

The onstage entertainment at McLean Day will be greatly enhanced this year by the addition of a new Children's Stage that features a variety of acts geared to delight and amaze preschool through elementary age children.

Also new, an expanded offering of popular local bands on the Main Stage, with Falls Church's own Tom Principato among the performers featured.

Produced by the McLean Community Center (MCC), the festival will be held from 11 a.m. to 5 p.m. on Saturday, May 21, at Lewinsville Park, 1659 Chain Bridge Road. Admission is free.



**Tom Principato.**



**Scott Ramminger and the Crawstickers.**

### Main Stage Schedule (Subject to change)

11 a.m. — Scott Ramminger and the Crawstickers. Bayou tunes to make you move.

Noon — Kara and Matty D. Acoustic duo with powerhouse vocals.

1 p.m. — Tom Principato. Bluesman Extraordinaire.

2 p.m. — Christylez Bacon. Grammy-Nominated, Hip-Hop Artist.

3 p.m. — Teen Character Awards. Presented by the McLean Citizens Association.

3:15 p.m. — Bach to Rock. The students from Bach to Rock McLean will take the stage.

4 p.m. — Odeon. Top 40 hits and your favorite guilty pleasures.



**Odeon.**

PHOTOS COURTESY OF MCC

### Children's Stage Schedule (Subject to change)

11 a.m. — Joy of Dance. Student dancers enrolled in classes at the McLean Community Center.

Noon — Rolie Polie Guacamole. One of the hardest working bands in kids' music.

1 p.m. — Alex and the Kaleidoscope Band. Interactive music band that encourages and inspires kids.

SEE STAGES, PAGE 11

WWW.CONNECTIONNEWSPAPERS.COM

# McLEAN DAY 2016



PHOTOS BY KEN MOORE/THE CONNECTION

Twins Wynn timer (pink) and Prudence Middleton, 17 months, danced in the shade by the grandstand at their first McLean Day celebration Saturday, May 16, 2015.

**SWING INTO SUMMER**  
CAMP & TRIPS  
2016

- Camp McLean
- Art Camps
- Summer Stage with Adventure Theatre
- Old Firehouse Summer Camp
- Summer Fun Weeks: Culinary Arts, Dance, Fencing, Science, Outdoor Adventure, and Fitness.

Register now at:  
[www.mcleancenter.org](http://www.mcleancenter.org)

**The McLean Community Center**  
1234 Ingleside Ave., McLean VA 22101  
703-790-0123/TTY: 711  
[www.mcleancenter.org](http://www.mcleancenter.org)



PHOTO COURTESY OF MCC

**Yosi and the Superdads**

## Two Stages Offer Entertainment

FROM PAGE 10

2 p.m. — Yosi and the Superdads. “The hottest rock ‘n roll band out there for young children.” — Montclair State University

3 p.m. — Bach to Rock. The students from Bach to Rock McLean will take the stage.

Parking is not allowed at Lewinsville Park on the day of the festival. Starting at 10:15 a.m. and continuing throughout the day, shuttle buses will run from the park to Trinity United Methodist Church at 1205 Dolley Madison Blvd., McLean Baptist Church at 1367 Chain Bridge Rd. and

MCC, 1234 Ingleside Avenue. Parking also is available at the Lewinsville Senior Center, 1609 Great Falls Street. Please Note: Due to a private event scheduled on May 21, Lutheran Church of the Redeemer, 1545 Chain Bridge Road, will not have parking available onsite, nor will a shuttle bus service the parking lot.

The festival will be held rain or shine. For more information, call 703-790-0123/TTY: 711, or visit: [www.mcleancenter.org/special-events](http://www.mcleancenter.org/special-events). The Center’s telephone will be answered from 7 a.m. to 5 p.m. on the day of the festival.

**ARTSPOWER IN**  
**“CHICKEN DANCE”**

**SATURDAY, MAY 14 AT 2 P.M.**

Tickets \$10-\$15

The Alden  
1234 Ingleside Ave., McLean, VA 22101  
703-790-0123

**ALDEN** SMALL STAGE. BIG TALENT.

[WWW.ALDENTHEATRE.ORG](http://WWW.ALDENTHEATRE.ORG)

# McLEAN DAY 2016



Local food trucks will return with mouthwatering gourmet offerings this year.



Scoops2U ice-cream-truck.

PHOTOS COURTESY MCC

## Mouthwatering Offerings

Local food trucks, which made their debut at last year's McLean Day festival, will return with mouthwatering gourmet offerings this year. The festival will be held from 11 a.m. to 5 p.m. on Saturday, May 21, at Lewinsville Park, 1659 Chain Bridge Road. Produced by the McLean Community Center, admission to the festival is free.

At press time, food vendors included:

### Anita's Frozen Cotton Candy

Original New Orleans-style snowballs (shaved ice) and bottled water.

### Captain Cookie & The Milk Man

Cookies, assorted flavors, ice cream sandwiches, local creamery milk, water.

### Crepe Love, LLC.

Sweet and savory crepes: Nutella, fraise amour, coco loco, Monsieur, Jean's Dijon, Farmer Joe, S'more, carnivale, water.

### Fava Pot

Platters, wraps, falafel, Cornish hen, chicken kabob, roasted potatoes, stuffed



Caramel apples are among many delicious desserts.

Maine lobster rolls, pulled pork, sweet and savory crepes are among the food choices at McLean Day 2016.

grape leaves, baklava, San Pellegrino, hibiscus tea, water.

### Oasis Concessions

Frozen smoothies, lemonade, shaved ice (regular and sugar-free), cotton candy, popcorn, water.

### Red Hook Lobster Pound

Maine lobster rolls, shrimp rolls, clam chowder, lobster mac and cheese, coleslaw, potato salad, chips, drinks, whoopie pies.

### Reithofer Foods

Popcorn, corndogs, funnel cakes, ice cream, soda, water.

### Rotary Club of McLean

High-quality hot dogs, pizza, chips, soda, water.

### Scoops2U

Small batch premium ice cream, sorbet, Chipwiches, novelty ice cream bars, water.

### The Tender Rib, Inc.

Beef brisket, cheeseburgers, chicken tenders, pulled pork, ribs, French fries, lemonade, sweet tea, water.

The festival will be held rain or shine. Voting for MCC Governing Board members will begin at 10:30 a.m. The rest of the festival opens at 11 a.m. Parking will not be allowed at Lewinsville Park on the day of the festival. Free shuttle buses will run from McLean Baptist Church, 1367 Chain Bridge Road; Trinity United Methodist Church, 1205 Dolley Madison Blvd.; and MCC, 1234 Ingleside Ave. and will drop off passengers at the entrance to the park. Due to a private event, there will be no parking or shuttle service at Redeemer Lutheran Church this year.

For more information, visit: [www.mcleancenter.org/special-events](http://www.mcleancenter.org/special-events) or call 703-790-0123, TTY: 711. The Center's telephone will be answered from 7 a.m. to 5 p.m. on the day of the festival.

Caroline Ruddy, 5, and friend Ariana Palmieri, 6, enjoy a trip in a flying car, Chitty Chitty Bang Bang style, at the McLean Day festival in 2015.



Hundreds enjoyed the rides at the 2015 McLean Day.

# McLEAN DAY 2016



**Agent Lynn Heinrichs**  
703-827-0377  
[www.lynn.heinrichs.com](http://www.lynn.heinrichs.com)



*A good neighbor is a green neighbor.™*



## Local Companies Sponsor and Support McLean Day 2016

**M**cLean-based businesses and nonprofit organizations have once again come together to enhance the community's annual family festival, McLean Day, by sponsoring important aspects of the event. Produced by the McLean Community Center, the festival will be held from 11 a.m. to 5 p.m. on Saturday, May 21, at Lewinsville Park, 1659 Chain Bridge Road. Admission is free.

MCC Executive Director George Sachs and MCC Special Events Manager Catherine Nesbitt developed the pilot sponsorship program in 2015 to allow local organizations to get involved in the community they serve, while also helping expand the festival's offerings. Sachs says, "We were happy to discover that there were many enthusiastic individuals and organizations willing to help us enhance a wonderful community celebration."

### This year's Community Sponsors Are

Lynn Heinrichs/State Farm Insurance Company  
Sponsor, McLean Day Map

Verizon  
Sponsor, McLean Day T-Shirt

McLean Properties  
Sponsor, Kid's Games

Washington Fine Properties  
Sponsor, Picnic Tent No. 1

Giant Food  
Sponsor, Picnic Tent No. 2



Wheat's Landscape Company  
Sponsor, Park Beautification

Squeals on Wheels  
Sponsor, Petting Zoo

Some other businesses, organizations and artisans participating in this year's festival as exhibitors are: Bach to Rock, BASIS Independent School, Capital Canine Club, Greater McLean Chamber of Commerce, M&T Bank, Old Dominion Animal Health Center, Sunshine Contracting, Weichert Realtors, Earthwear Tie Dyes, McLean Citizens Association, McLean Community Players, Yan's Art Studio, Fairfax County Office of Elections, Friends of McLean Community Center, Holy Trinity Church, McLean Project for the Arts, McLean Volunteer Fire Department and the Safe Community Coalition.

For festival updates, driving directions, shuttle bus stop locations and a festival area map, visit [www.mcleancenter.org/special-events](http://www.mcleancenter.org/special-events) or call the Center at 703-790-0123/TTY: 711. The Center's telephone will be answered from 7 a.m. to 5 p.m. on the day of the festival.



## Vote on McLean Day

**McLean Community Center  
Governing Board Election**  
**Saturday, May 21, from 10:30 a.m.–5 p.m.**  
**Lewinsville Park, 1659 Chain Bridge Road**

### Your Vote is Your Voice!

All qualified residents of Small District 1A Dranesville are encouraged to vote for members of the 2016-2017 MCC Governing Board.

- You need not be registered to vote in the general election
- Proof of residence, such as a driver's license, is required

**Absentee Ballot**

Vote now by absentee ballot and avoid the crowds! View the candidate statements on the Center's Website. Call the Center or send an E-mail message to "elections@mcleancenter.org" to request a ballot package be sent to your home. Or, stop by MCC at 1234 Ingleside Avenue or the Old Firehouse Teen Center at 1440 Chain Bridge Rd., and pick one up. Completed ballots must be received by 5 p.m. on Wednesday, May 18 to be counted.



**The McLean Community Center**  
703-790-0123/TTY: 711  
Sign up for E-mail Updates:  
[www.mcleancenter.org](http://www.mcleancenter.org)

*Open a World of New Possibilities!*

## Register Now for Summer Classes

at the  
**McLean Community Center**



- Parent & Child Workshops
- Yoga & Fitness
- Technology & Science
- Music & Art
- CPR, Babysitting & Safety
- Music & Theater
- Fencing & Soccer
- Lifetime Learning

For a complete listing of classes, tours, performances and events, visit our Website at: [www.mcleancenter.org](http://www.mcleancenter.org)—and register online.



**The McLean Community Center**  
1234 Ingleside Ave., McLean VA 22101  
703-790-0123; TTY: 711  
[www.mcleancenter.org](http://www.mcleancenter.org)

# Residents of Dranesville Small Tax District 1A—Vote for 2016-2017 Governing Board Members at McLean Day

## Three Adult, Two Teen Positions Available

**M**cLean Community Center (MCC) encourages residents of Dranesville Small District 1A to take part in the Center's annual Governing Board elections, which will be held at McLean Day on Saturday, May 21. Residents can vote from 10:30 a.m. to 5 p.m. at the election tent right inside the entrance of Lewinsville

### Adult Candidate Personal Statements

#### Nadia Ayoubi-Ahluwalia:

Nadia Ayoubi-Ahluwalia has over 15 years' experience in business and executive management. She is an immigrant of Afghan descent; fluent in English, Urdu, Hindi, Dari and conversational Punjabi. Nadia and her husband Puneet have resided and raised their children, Anya, Ammad and Anika in McLean for 10 years. The whole family supports the community at every turn. Citizenship is her priority as she is involved in both political activities and volunteerism. Having founded numerous retail businesses in the DMV, Nadia is most focused on HummingBirds Consulting, an international IT business that is currently expanding into the Classified Government Contracting arena.



#### Kat Kehoe:

Someone once described McLean as a large town that feels like a small town. I grew up in a small town and appreciate the sense of community a small town has.



No place represents our community better than the McLean Community Center where we gather to enjoy cultural and educational programs, and provide meeting space for local organizations. I applaud the MCC Board for keeping the upcoming new addition within reserve funds and I will stay within budget. My background: M.S. and M.A. from GWU; Former Senior Project Manager, Fannie Mae; Realtor, L&F McLean; Board Member, Fairfax County Community Services Board.

Park, 1659 Chain Bridge Road.

The board sets policy and provides general oversight for all programs of the Center and its facilities, including the Robert Ames Alden Theatre and the Old Firehouse Teen Center.

Three adult positions and two youth positions are open this year. The adult candidates who receive the three-highest vote counts will serve three-year terms. Youth candidates, one from the McLean High School boundary area and one from the Langley High School boundary area, will serve a one-year term. Youth candidates do not have to attend these schools to serve on the board.

#### Lauren Kivlighan:

I want to be able to lend my abilities to help the McLean Community Center. I am a business owner, a parishioner of St. Luke's Catholic Church and a longtime resident of McLean. I am a huge supporter of the McLean Community Center.



#### Paul Kohlenberger:

I'm delighted to seek reelection to the Governing Board. As current Board Chair and past member of the Finance and Capital Facilities committees, I have worked to strengthen the Center's financial position and achieve progress on our renovation project. As an MCC patron since childhood, McLean Historical Society president and a McLean Citizens Association director, I understand and value the center's legacy. I've been honored to serve on the Governing Board. With your support, I can continue providing dedicated, responsive, and conscientious service to you, our fellow citizens, and our shared civic and cultural center. Thank you for your vote.



#### Shahnaz Maguire:

I graduated from George Mason University and have lived in Northern Virginia for four decades. My husband and I have owned our home, worked, paid taxes and enjoyed life in McLean since 1994. I'm vice president of a small consulting firm. I've



been serving as chief or assistant chief election officer in McLean for many years. I believe MCC should be a welcome addition to the lives of all members of the community, within an affordable budget. If elected to the Board, I hope to bring fresh ideas for the continued improvement in MCC's services to the McLean community.

#### Jill Roth:

There's nothing more important to me than my family. McLean offers amazing opportunities for my two sons, ages 3 and 8 months, and I'd like to see these opportunities grow. As a member of the MCC Board, I can have a direct impact on programs, camps and events in our community. I'd offer a different insight and fresh feel to the board. As a small business owner, I know what it takes to have a vision and make it reality. I'll communicate with residents to hear the concerns and desires of the center in order to deliver results that matter.



#### Gerri Swarm:

I have worked for a national association for 35 years as an administrator and certified meeting professional; overseeing a \$3 million annual budget. I bring my strengths to this Governing Board and know it will be a beneficial match. My husband and I have lived in McLean for 22 years and have four children. I served on the PTA board, actively involved in our children's activities through high school, including scouting and sports in McLean. I ask for your vote and thank you for your support.



#### Vickie Trunnell:

As the recipient of the 2015 Fairfax County volunteer award, I am proud of my service to the McLean community. Whether it's an usher at Alden Theatre, coaching youth basketball, serving on the MYB board, being a class parent or team mom, I have been active in our town for 20 years. Together with this service and a full-time management position, I have demonstrated that I am a strong organizer, have a strong com-



munity view and have the ability to work with all types of people. Now is the time for me to use these skills to benefit the MCC.

#### Deesi Woltman:

As a candidate for MCC's Governing Board, I am committed to MCC's role of community building through civic engagement. MCC is vital to the unique, small town character of McLean. When our family moved here 11 years ago, its diverse programs, activities and services made us feel welcome, and allowed us to quickly become part of the community fabric. I want to preserve MCC's legacy and optimize its value to all residents through fiscally responsible stewardship of its program and facilities. My experience and insight will ensure that MCC continues to be responsive to the needs of the community.



### Youth Candidate Personal Statements Langley High School Boundary Area Candidates

#### Alexander Camus:

I am a 16-year-old sophomore at Langley High School, where I play saxophone in Langley's Wind Ensemble and run on the cross country and track teams. I also serve on mission trips and as a camp counselor through my church. For six years, I have participated in McLean Soccer, gone to classes at the center and seen several shows at the Alden Theatre. I have gone to many community events as well, and if I am elected, I will make sure that MCC programs are maintained and improved because they hold a great value to our community as a whole.



#### Liana Keesing:

My name is Liana Keesing, and I'm excited to be running for the position of Langley student representative to the MCC



SEE VOTE, PAGE 15

## Vote for MCC Board Members

FROM PAGE 14

Governing Board! Previously, I've been a Virginia Senate Page, President of my student government and an appointed member of the TJHSST Homecoming Committee. I bring enthusiasm, initiative and creativity to everything I do. As a cellist, I will work to create more opportunities for local students to showcase their abilities in the arts. I also want to promote environmentally friendly practices to ensure that the town I love remains a sustainable, diverse and vibrant community for years to come.

### Quentin

**Levin:** I run not merely to take office, but to make MCC a better organization. Serving at MCC for the past year, I've developed an understanding—community makes us who we are. I vow



to continue spreading MCC's explorative spirit and goodwill by championing innovative programs for every age/interest. As class president, debate team leader and journalist, I know how to listen and fight. I believe life must be lived to its fullest. I'll

apply this principle to every community endeavor as we open the arts to new eyes, have fun and explore our deepest passions. McLean's future is our future!

### Priyanka

**Susarla:** I'm a junior at Langley High and I'm fortunate to have grown up in McLean's supporting environment. Serving and giving back to the community has been my top priority. I coach McLean Youth basketball, tutor at my local elementary school and have volunteered at the library. I hold leadership positions, such as being an ambassador in Virginia Girls Summit, an organization serving to empower girls. I strive to be a role model for youth. Given the opportunity, I'll be thrilled to serve the community I love and will do my best to give youth a voice in the MCC board.



## McLean High School Boundary Area Candidates

**Sam Gollob:** I am so fortunate to have lived in McLean all my life and it is very important to me to give back. I have been the president of my McLean High School class of 2018 for the last two years. I try to be a leader and role model on my club; high school and summer swim teams. Also, I volunteer coach for a Special Olympics swim team. As your leader, I hope to act as a voice for the youth of McLean to make our community an even better place.



### Riya Master:

My name is Riya Master and I am a sophomore at McLean HS.

I am interested in being a doctor, and I thoroughly enjoy math. I serve on the Teen Advisory Board for the public libraries. Last summer, I worked as a volunteer at Children's Na-



tional, providing great job experience.

Additionally, my resume includes the JV field hockey and soccer teams, debate, Model United Nations and DECA. Multiple national/local competition experiences have given me a strong insight on policy and working effectively in a committee or team. I believe I can make a difference and benefit the governing board.

### Mariana

**Patterson:** I enjoy taking other people's ideas and thoughts into account when making decisions, especially if I'm working together with them to achieve a common goal.

Being bilingual in both English and Spanish aids me in this trait.

My organizational skills are another strong characteristic of mine as I consider them to be both my greatest weakness and strength because I often make lists in order to structure a plan that I want to obtain, no matter the size. However, I feel uneasy if I proceed to do a task without a formulated strategy.



## More on Elections

**Write-in Candidates are allowed.** Write-in candidates must receive at least 10 votes from 10 residents of the Center's tax district in order to have their votes counted. For youth write-in candidates, the 10 votes must come from teens that live within the same high school boundary area as the candidate.

**Absentee ballots are available.** A resident may request an absentee ballot package by phone (703-790-0123, TTY: 711) or email (elections@mcleancenter.org), or may pick one up at MCC or the Old Firehouse, 1440 Chain Bridge Road. Completed ballot absentee packages must be received at the Center by 5 p.m. on Wednesday, May 18.

**For more information** on the MCC Governing Board Election, call the Center at 703-790-0123/TTY: 711 or visit: [www.mcleancenter.org](http://www.mcleancenter.org).

**BITA MOTESHARREI, MD, FACOG**  
Obstetrics, Gynecology & Infertility



- Preconceptional Counseling
- Adolescent Gynecology
- Premenstrual Disorders
- High Risk Obstetrics
- Menopause
- Sexual Disorders
- Routine Prenatal Care
- High Risk Pregnancy

• Clinical professor of OBGYN at George Washington University & Virginia Commonwealth University

• Fellow of the American College of Obstetricians and Gynecologists

• Diplomate of American Board of Obstetrics and Gynecology

(703) 356-7700  
1515 Chain Bridge Rd. McLean, VA  
[www.womensglobalhealth.com](http://www.womensglobalhealth.com)



**Join Us at McLean Day on May 21<sup>st</sup>!**

**Christian Science Reading Room Booth  
11-5 Lewinsville Park**

**Pick up your free copies of The Sentinel, a magazine on spiritual healing and The Christian Science Monitor, the Pulitzer Prize winning news magazine**

**To learn more about Christian Science, visit:  
[CSMcLean.org](http://CSMcLean.org), [ChristianScience.com](http://ChristianScience.com),  
[christianscienceDC.org](http://christianscienceDC.org),**

## Welcome to McLean Day from Trinity United Methodist Church

Proud members of the McLean community since 1820.

- Join us for worship Sunday mornings at 8:30 a.m. and 10:30 a.m.
- We have Sunday School for all ages at 9:30, and Children's Education at 10:30.
- Our nursery is available from 8 a.m. until noon.

Noon communion service every Wednesday  
Celtic worship the last Sunday of each month  
Open Hearts. Open Minds. Open Doors. All are welcome.

**Trinity**  
United  
Methodist Church  
[WWW.UMTRINITY.ORG](http://WWW.UMTRINITY.ORG)  
1205 Dolley Madison Blvd.,  
McLean, VA 22101

Facebook:  
Trinity UMC, McLean

Twitter:  
UMTrinity

# McLean Community Center

## *The Center of it all*

### Alden Theatre

Professional Series  
McLean Kids Series  
Films & Lectures  
Summer Concerts



### Classes & Trips

McLean Cooks  
Day Trips  
Music & Movement



### Special Events

McLean Day  
4th of July Fireworks  
Holiday Crafts Show



*...and so much more!*

### Youth & Teen Activities

Harvest Happenings  
Camp McLean  
Old Firehouse Teen Center



**The McLean Community Center**

703-790-0123/TTY: 711

Sign up for E-mail Updates:

[www.mcleancenter.org](http://www.mcleancenter.org)

Like us on

**facebook**

Follow us on

**twitter**

