

# Potomac ALMANAC

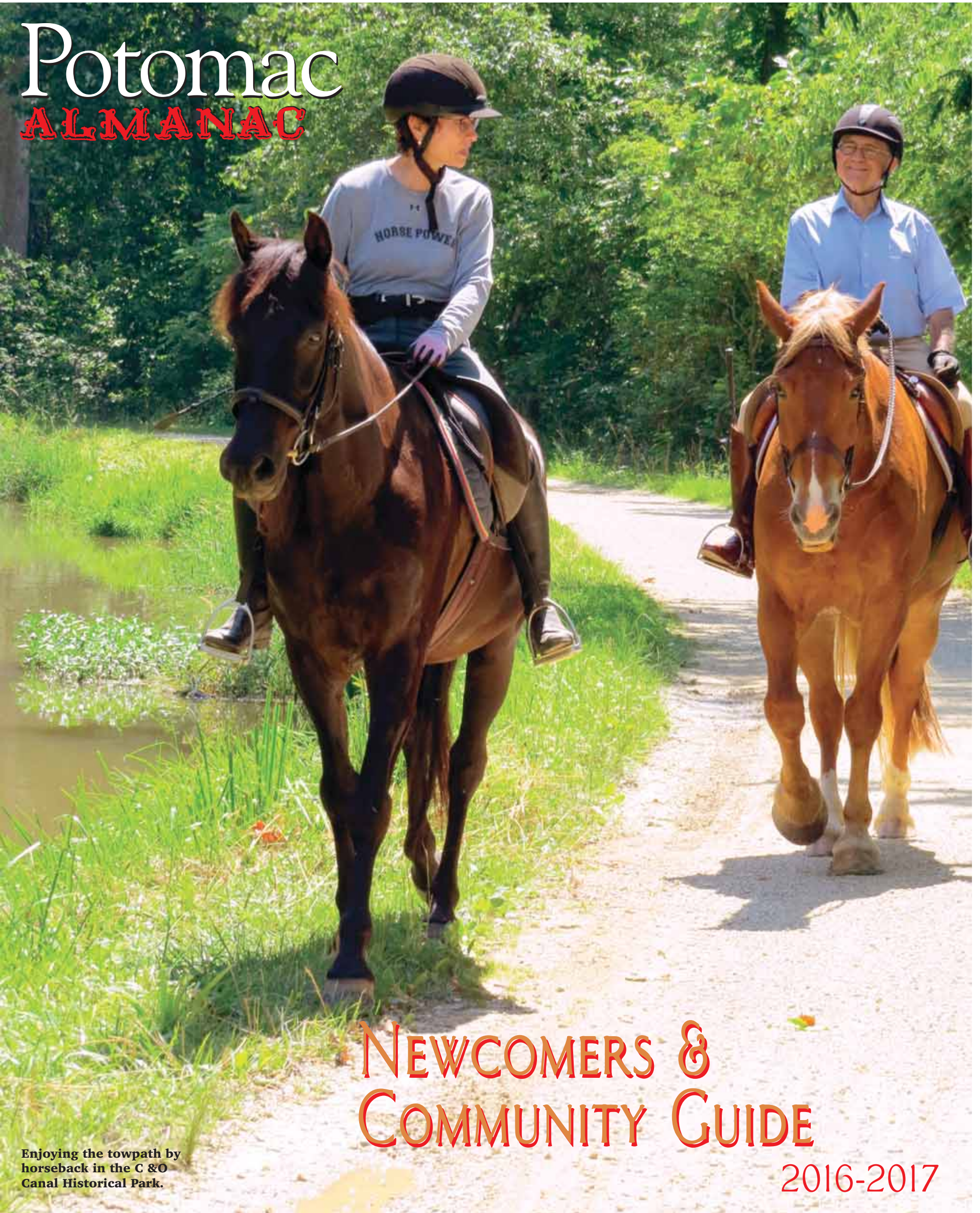


PHOTO BY MARY KIMM/THE ALMANAC

Enjoying the towpath by  
horseback in the C & O  
Canal Historical Park.

## NEWCOMERS & COMMUNITY GUIDE

2016-2017



## NEWCOMERS & COMMUNITY GUIDE

# History of PANC

Potomac Area Neighbors Club will be celebrating its 50th anniversary in October.

BY KATHY KURGAN

CO-PRESIDENT, POTOMAC AREA NEWCOMERS' CLUB

The Potomac Area Newcomers' Club (PANC) originated in February, 1966 when a group of women started the Potomac Welcome Wagon Club. Their first activity was an invitational open house in March, attended by 39 women. At the second meeting, officers were elected and dues were established at \$2 per year. Based on member interest, they formed three activity groups: antiquing, bridge, and bowling. The first luncheon was held in May at the Washingtonian Country Club with a cost of \$2.75 per person.

The club grew steadily and by April of 1973, the membership numbered 320. At that time, the club decided to limit membership in Welcome Wagon to three years, and to form another club for members who exceeded the three-year limit. More than half the members left to join the new club "Echoes."

Between 1979 and 1983, the name of the club changed several times. The by-laws were changed to allow members to continue their membership indefinitely. With this change, members could participate, contribute, and maintain their friendships over a longer period of time.




PHOTO CONTRIBUTED

**The 2016-2017 board and some new members of the Potomac Area Neighbors Club.**

In 2016, the club adopted its name as Potomac Area Neighbors' Club as many of its members are no longer newcomers to Potomac. The object of the club has always been the development of fellowship and acquaintance among all residents and their assimilation into the civic life and social activities of their community.

Visit [panc.clubexpress.com/](http://panc.clubexpress.com/)



**POTOMAC  
YOGA**

Kathleen Hogan

GENTLE STRETCHING &  
CLASSICAL YOGA POSTURES  
TO IMPROVE STRENGTH,  
FLEXIBILITY,  
& OVERALL HEALTH

Try A Free Class!

9908 South Glen Road  
(at Falls Road / Democracy Blvd.)

(301) 738-3384

[www.potomacyoga.com](http://www.potomacyoga.com)

*Build Your Community*

Support Your Local  
Businesses.

POTOMAC  
ALMANAC

[www.potomacalmanac.com](http://www.potomacalmanac.com)

THE CONNECTION  
to your community



**LAIID  
BACK**

Offenbachers  
Create space for living.

Visit [offenbachers.com](http://offenbachers.com) or stop by one of our showroom locations.

**Rockville | 12229 Nebel St., 20852 • Mon-Sat 10am-9pm, Sun 11am-6pm**



# About the Almanac

**A**s your local, weekly newspaper, the Potomac Almanac, a Connection newspaper, seeks to deliver the local news you need, to try to make sense of what is happening in your community, to gather information about the best things in and around your community, to advocate for community good, to provide a forum for dialogue on local concerns, and to celebrate and record achievements, milestones and events in the community and people's lives.

Here in our Newcomers and Community Guide, we've included an updated version of our award-winning Insider's Guide to the Parks, plus details of how to vote in the upcoming elections, information on local government, nonprofits and business organizations, plus tips and tidbits from the community.

We invite newcomers and long-time residents alike to let us know how we're doing and let us know what is going on in your part of the community. If you have questions or ideas, send us an email or call us, contact us on Facebook or send us a tweet. We invite you to send letters to the editor or to send an email with feedback about our coverage.

We want to know if someone in your family or your community published a book, started a business, became an Eagle Scout, raised money for a good cause, accomplished some feat like running a marathon, supporting a cause or having art included in an art show. We publish photos and notes about personal milestones and community events, including births, engagements, weddings, anniversaries, awards

and obituaries.

We are also interested in events at your church, mosque, synagogue, community center, pool, school, club, etc. Email us a note about the event, being sure to include when and where the photo was taken and the names of all the people who are in a photo.

We also publish notes about news and events from local businesses. Notes about openings, new employees and anniversaries are welcome. It is especially important to us to let people know about events ahead of time in our calendar of events. We appreciate getting notice at least two weeks ahead of the event, and we encourage photos.

The Almanac is one of 15 papers published by the independent, locally owned Local Media Connection LLC, serving the suburbs of Metropolitan Washington in Northern Virginia and Potomac, Md.

Our flagship paper, the Alexandria Gazette Packet, is one of the oldest continuously publishing papers in the country, beginning publication in 1784.

### CONTACT

Potomac Almanac:  
almanac@connectionnewspapers.com  
For advertising and marketing information, see  
www.connectionnewspapers.com/advertising, email  
sales@connectionnewspapers.com or call 703-778-9431.  
Friend Us On Facebook:  
www.facebook.com/ConnectionNewspapers  
Follow Us on Twitter—  
Potomac Almanac: www.twitter.com/PotomacAlmanac;  
@PotomacAlmanac

— MARY KIMM.

MKIMM@CONNECTIONNEWSPAPERS.COM.  
WWW.TWITTER.COM/MARYKIMM  
@MARYKIMM



PHOTO BY MARY KIMM/THE ALMANAC  
**Eastern Kingbird in the C & O Canal Historical Park.**



**A view of the Potomac River from the C & O Canal Historical Park.**

PHOTOS BY MARY KIMM/THE ALMANAC

# Protecting Soil, Air, Water

## WMCCA's emphasis on environmental protection.

BY SUSANNE LEE  
PRESIDENT, WEST MONTGOMERY COUNTY  
CITIZENS ASSOCIATION

**W**elcome to the amazing Potomac Subregion — our “Green Wedge” containing extensive stream valley parks, wetlands, meadows, tree canopy, rich biodiversity, and the crown jewels: the Potomac River and the C & O Canal Historical Park. These environmental treasures enhance our personal lives with their beauty and protect the area's soil, the air we breathe, and especially the water we drink. However, they are constantly under threat.

Established by concerned citizens in 1947, the West Montgomery County Citizens Association (WMCCA) works tirelessly to protect, preserve, and promote the very best of the Potomac Subregion. Designated by Montgomery County as a “low density residential wedge area, which would complement the developed 1-270 corridor” and protect the public water supply and the agricultural reserve, the Potomac Subregion Master Plan reaffirms the “Green Wedge” functions of our Potomac neighborhoods. It maintains the area's semi-rural character through low density zoning, limited sewer capacity, the two-lane road network, and a confined commercial core. WMCCA's primary focus remains grounded in the principles enunciated in the Master Plan.

WMCCA pursues its goals in a collaborative fashion working with citizens, scientific experts, and local, state, and national officials. A major emphasis is placed on the dissemination and consideration of information critical to the development of environmentally sound, practical approaches to decision making. Citizen involvement is strengthened by providing individuals with the information and tools they need to address their particular concerns. As a result, WMCCA is often the “go to” organization when individuals are faced with unexpected, unwarranted threats to their neighborhoods. WMCCA members meet frequently with government officials, testify, and, if needed, initiate legal action to ensure citizen concerns are heard and that actions taken are consistent with the Master Plan and the relevant statutes and regulations.

Membership is open to all who live in the Potomac

Subregion. If you haven't already, we encourage you to join and participate in our efforts. WMCCA holds monthly meetings open to all, not just WMCCA members, on the second Wednesday of the month from October through May at the Potomac Community Center, 11315 Falls Road beginning at 7:15 p.m. Programs feature a wide range of speakers, citizen concerns, development proposals, and environmental issues relevant to our community. Additional information concerning WMCCA, including membership information, is available at [www.wmcca.org](http://www.wmcca.org). Check the Potomac Almanac and the WMCCA website for details on upcoming meetings.

WMCCA is currently following these important issues:

- ❖ The Washington Suburban Sanitary Commission's proposed construction of a new mid-river intake for drinking water at their River Road filtration plant within the C & O Canal National Historical Park. If approved, this project would have multiple long term adverse impacts including the destruction of acres of forested park land containing rare plant and animal species and an archaeological site and negative impacts on visitor use of the Canal while failing to address the underlying problem of pollution caused by the Watts Branch stream;

- ❖ Maryland Catering Company's conditional use application to construct a wedding/banquet/business meeting venue and motel units on land north of Old Angler's Inn at 10801 MacArthur Blvd.;

- ❖ Update of Montgomery County's Comprehensive Water Supply and Sewerage Systems Plan – a document that will have profound impacts on the type, location and density of development.

- ❖ Brandywine Senior Living, LLC's conditional use application for an assisted living facility at the former site of the Potomac Tennis Club next to the Falls Road Golf Course on Falls Road. WMCCA has joined with the abutting property owners and the Brickyard Coalition to appeal the County Hearing Examiner's decision to approve the application. The appeal raises important issues regarding the standards to be applied to conditional use applications under the county's new zoning code.



# NEWCOMERS & COMMUNITY GUIDE

**Ginny Barnes  
at a Shumard  
Oak on the  
Canal.**



PHOTO  
CONTRIBUTED

**A double-crested  
Cormorant at the  
Potomac River.**



PHOTO BY MARY KIMM/THE ALMANAC

## Why I Live in Potomac

BY GINNY BARNES

**I**t was love of my husband that brought me here nearly 40 years ago but in so many ways, trees are what make me stay. First of all, I live in a log cabin in the Glen on a slope above the Watts Branch. A house made of trees, surrounded by trees. When I look out my windows or sit on the back porch, I'm up in the trees. Big trees. old trees, a kingdom of trees. It is the presence or absence of trees that most affects the water quality of our many streams leading to the Potomac River and ultimately the water we drink.

The last few years, I've been visiting individual trees, reading about them, learning what distinguishes them one from another. When I go on hikes now, it is often in search of a particular big tree within a forest. There is something about being with large trees that inspires and uplifts weary souls like me. I've wondered why? Turns out, breathing deeply of a forest may have measurable healing benefits. The Japanese recognize it and have a name, shinrin-yoku — wood air bathing. Japanese researchers have found when diabetic patients walk through woodlands, their blood sugar drops. Famed Irish biochemist Diana Beresford-Kroeger writes that trees, like elephants and whales register and may communicate through a sound spectrum inaudible to us called infrasound. We humans may feel these long stretched out sound waves of 20 hertz and below even if we can't hear them.

What I know is that nothing lifts my spirits more or makes me feel like a walk in the woods. In Potomac we have a good many forested areas to hike. Blockhouse Point Conservation Park is a 600-plus treasure adjoining the C&O Canal National Historic Park and an exceptional mature Piedmont forest. From its bluffs above the Potomac on a clear day you can see the Blue Ridge. On the towpath you could walk to Georgetown or all the way to Cumberland if so inclined. These deeply wooded tracts and the narrow river corridor of green are the real and enduring luxuries of living in Potomac.

### A Special Place

Just upstream of the overlook at Great Falls Park is a path that winds along the Potomac for about a mile called the River Trail. Here, the understory is dominated by a leafy canopy of Paw Paw trees and at intervals the tunnel of green opens to wide views of the river where Cormorants sit on flat rocks and hold out their wings to dry. Along this path and sometimes right in the middle of it are exceptional large trees to visit, walk around, lean against and even hug if you are so inclined. Here lives a tall, straight Shagbark Hickory, some beautiful old Oaks and Sycamores that twist their way to the skies as you stand beneath and marvel. This path is one more place of wonder and delight in Potomac. Maps of the surrounding trails are available at the Great Falls Tavern Visitor Center.

### Advice for Newcomers

Congrats on choosing a great place to live. Life is easy here. You get great service from Montgomery County government.

Dial 311.

You will speak to a very knowledgeable real person who will actually listen, contact the correct department, ie. "Highway services," etc., and give you a tracking number. You will get a response. Even without it, call back 311.

We have other great services.

"Recycling" and "yard trim" pick up every week helps us clean up. The yard trim goes for compost which county uses, and I think sells.

You could pick up "yard trim" stickers at the library. I use three trash cans every week — sometimes, like in Fall and Spring, often much more.

We have a wonderful Post Office too — use it.

We had no library when we moved here. Enjoy it. It's great.

— GRACE KIMM

## 'A Genuine Sense of Place'

BY ROGER BERLINER  
COUNTY COUNCIL (DISTRICT 1)

**I**f you are a newcomer to Potomac, you are in for a real treat — as living there for 20-plus years was for me everyday. But if you are looking for the land of "Housewives of Potomac," you will be sorely disappointed. That we are not. Instead, you will find a caring community, whose day to day life is much like everywhere else ... but for the fact that you live in a beautiful neighborhood.

Each of us has different aspects of a community that we are passionate about. Mine is the environment. To this day, I marvel at the elemental wildness of the Potomac River so close to the heart of the free world. I take my black lab to the river on a regular basis, fly fish on it, and simply find a nice spot and let the rest of the day's concerns float away like the current before me.

Access to this beauty isn't limited to the hardy. The C&O Canal, one of the National Park Services' most popular parks, affords all of us an equal opportunity to appreciate the splendor of nature. With over 700,000 visits per year, the C&O Canal offers wonderful hiking trails and beautiful views of the Potomac River. I have been a big supporter of this park, and was honored to be have been recently appointed by our United States Secretary of the Interior to serve

on the C&O Canal advisory commission.

Potomac is more than beautiful of course. It has some of the finest residential neighborhoods anywhere; it has some of the finest schools anywhere; and it has one of the finest privately owned museums in the world in Glenstone. It has great golf courses; fine restaurants; and an active citizenry that works hard to protect what is truly special about Potomac.

Ask anyone you meet on a crisp autumn morning at the Potomac Day Parade. Ask the person you pass hiking the Billie Goat Trail. Ask any of your new neighbors that moved to Potomac "for the schools" but have lingered long after their children donned graduation caps. They will tell you that beyond the beautiful parks, the outstanding schools, the top-notch golf courses, in Potomac you will find a genuine sense of place. A strong and vibrant community nestled just outside the nation's capitol.

It has been my privilege to represent Potomac on the Montgomery County Council since 2006. Now it is my privilege to welcome you to Potomac — and to welcome you home. If you ever need assistance with a county government issue, please don't hesitate to contact my office. You can reach me at 240-777-7828 or [councilmember.berliner@montgomerycountymd.gov](mailto:councilmember.berliner@montgomerycountymd.gov).

### VIEWPOINTS

### Living in Potomac

**ANTHONY  
RATINOV  
(age 18)**

I've lived in Potomac my whole life. Newcomers should know that Potomac is kind of in its own bubble — it's very different from the rest of the country. People here have some unique customs and differ greatly from the average American, in my experience. Potomac is very nice, and similar to a resort in some respects, but I am really looking forward to exploring the rest of the world and seeing different ways of life. Potomac has some of the best school systems in America — Montgomery county is filled with great schools. Also, there are many great restaurants here and close by — such as in Bethesda, D.C., or any other place that can be easily reached. Potomac is conveniently located close to these various other cities so it facilitates travel and



being able to connect with and explore these other locations — such as through the Metro.

3. Some community Extracurriculars that I've done here include performing for some retirement and community centers here for some of the older folk. In addition, I've helped pick up trash around the community.

Thanks!

**LUCY BEDEWI  
(age 17)**

It's a very small town; you can always see a familiar face in a local mall or plaza. The schools are exquisite as is the general safety. The only issue in the school system could be the extreme pressure that is placed on students to perform.



— COMPILED BY  
AARON HWANG



# NEWCOMERS & COMMUNITY GUIDE

## Aging in Place

Potomac Community Village (PCV) is a non-profit network of neighbors and friends geared to enhancing the quality of life for older Potomac residents, enabling them to age in place in their current Potomac-area homes and remain vibrant, contributing members of our community. PCV, which thinks of itself as “your roadside assistance on the journey of life,” creates social connections, offers educational, wellness and safety programs, provides neighbor-suggested referrals to contractors and other vendors, and arranges for volunteer services, such as transportation, computer help, simple home repairs, and friendly phone calls and visits. PCV is part of a nationwide movement of more than 500 Villages, of neighbor helping neighbor. Volunteers of all ages are welcome to help as they have time. For information on volunteering, joining, or getting volunteer help, contact [info@PotomacCommunityVillage.org](mailto:info@PotomacCommunityVillage.org), 240-221-1370 or visit [www.PotomacCommunityVillage.org](http://www.PotomacCommunityVillage.org).

PCV's Fall 2016 events include morning coffees, afternoon teas, book group meetings, a walk on the C&O Canal, theater parties, a booth at Potomac Day, and monthly meetings that are free and open to all.

PCV's Thursday, Sept 22 monthly meeting features universal design expert Louis Tenenbaum on “Na-



PHOTO CONTRIBUTED

**Potomac Community Village members Richard and Joan Gorman getting advice on enhancing their use of an assortment of communication devices at a PCV-hosted Tech Tutorial with student volunteers from Bullis School's Summer Program. The program, for PCV members, was held on July 18, at the Potomac Community Center.**

tional Policies to Promote Aging in Place,” with a look at newly proposed federal legislation. The Thursday, Oct. 20 monthly meeting features cookbook author Amy Riolo on the Mediterranean Diet and health. The Thursday, Nov. 17 meeting features author David Hoffman, on his book, “The Billion Dollar Spy.”

Details on all events will be found at [www.PotomacCommunityVillage.org](http://www.PotomacCommunityVillage.org).

## Helping Children Manage the Challenges of Separation and Divorce:

An evening with Barbara Fairfield, M.Ed., LCMFT

### Thursday, October 13

Suburban Hospital Auditorium  
8600 Old Georgetown Rd., Bethesda, MD 20814

**6:30 - 7 pm Registration & Refreshments**  
**7 - 9 pm Program**

**Registration Required:** [yfsparenting.eventbrite.com](http://yfsparenting.eventbrite.com)

This interactive seminar, geared towards both children & parents, will explore the child's perspective on divorce and help parents develop a healthy alternative to fighting after divorce.

\$20/person | Children under 18 are free

Fee waivers available.

All proceeds fund the prevention programming of YMCA Youth & Family Services. Reasonable disability accommodations available upon request. Please contact Rob Guttenberg at 301-576-6300 by September 13.

**www.PotomacHorse.com**

Riding Lessons  
Boarding  
Birthday Pony Parties  
Horse Shows  
Therapeutic Riding  
Summer Day Camp  
and more!

VISIT OUR WEBSITE

A Potomac Tradition for over 50 years... come see why we're THE PLACE where Montgomery County Learns to Ride!

301-208-0200

Conveniently Located near Travilah & Duffief Mill at 14211 Quince Orchard Rd

FREE Introductory Lesson & Discounted Trial Mini-Session!

A PUBLIC FACILITY LEASED FROM THE MARYLAND-NATIONAL CAPITAL PARK AND PLANNING COMMISSION

**On-Site and Streaming Game Design & Programming Courses for Ages 8 to Adult**

Fall/Spring Weekend Classes and Summer Programs

Intro and 3D Game Design (w/ Unity and Unreal4) • Multi Platform Mobile App Development • iOS App Development (Swift and Xcode) • Art & Animation • Concept Art to 3D • Digital Art • Sound & Music for Games • Minecraft Modding • Writing for Games • Programming (Java, C++, C#, Python, Javascript, Ruby on Rails) • Cyber Security • Augmented Reality • Drone Programming • Wearable Tech

One of the fastest growing and most transformational community programs in the region today, the **Mason Game & Technology Academy** integrates all of the STEM core competencies in a challenging, fun, and engaging way. This program combines both the sciences and the arts, with creative & critical thinking and problem solving skills.

Experience **On-Site** courses in the Computer Game Design Labs at Mason in Fairfax, Loudoun, Arlington, and Prince William. Plus, we offer a **pre-college residential option!** Or, enroll in our **Virtual Academy** and take Virtual (streaming) classes from anywhere with our revolutionary new cloud-based mobile education platform **SCRIBYB** - engaging in real-time learning and peer-to-peer interaction.

Virginia Serious Game Institute @ Mason

Please direct all questions to the MGTA Program Director:

Vera Lichtenberg

vlichten@gmu.edu

http://mgta.masongamedesign.org



# POTOMAC ALMANAC GUIDE TO POTOMAC RIVER

## Enjoy the Potomac River &

COMPILED BY KEN MOORE  
AND MARY KIMM  
THE ALMANAC

**P**otomac is bordered by more than 12 miles of the C&O Canal National Historical Park, including the towpath and the Potomac River. Living in Potomac provides opportunities to enjoy the sights and sounds of the river with outdoor activities ranging from an easy stroll to a challenging hike; a flat bike ride of a few miles to multi-day bike trip; rock climbing, world-class whitewater kayaking or a gentle paddle on flatwater. Wildlife is abundant and birders flock to area. All outdoor areas of the C&O Canal National Historical Park are open daylight hours year round. Visitors pay an entrance fee at the entrance to Great Falls Tavern Visitors Center at Falls Road and MacArthur Boulevard, but access everywhere else is free. Three-day pass for a vehicle is \$10; a person on foot is \$5; annual pass is \$30. See [www.nps.gov/choh](http://www.nps.gov/choh)

### Great Falls Tavern Visitor Center and Olmsted Overlook

11710 MacArthur Blvd.  
301-767-3714



If you haven't seen Great Falls, it's time. Enter the C&O Canal National Historical Park here for up close views of Great Falls by walking 0.2 miles over the Olmsted Island Bridges to the overlook at the end. Bridges and boardwalks traverse

a rare floodplain terrace environment, ending with an observation deck over the spectacular views of the Falls and the head of Mather Gorge.

Accessible for wheelchairs and strollers. The tavern is open year round, seven days per week from 9 a.m. to 4:45 p.m. <http://www.nps.gov/archive/choh/Visitor/Centers/GreatFalls.html>

**ABOUT THE FALLS**, from The Geologic Story of Great Falls and the Potomac River Gorge published by the U.S. Geological Survey in 1980:

"In its seaward course, the Potomac River crosses many small rapids and cascades, but these are insignificant in comparison with the foaming fury of Great Falls, where the river drops 12 meters in about 180 meters and is channeled into a narrow rock-walled gorge less than 25 meters wide in places. In the summer the flow may be less than 38,000 liters a second, but during floods the flow commonly reaches 40 million liters a second. The average flow pouring over the falls is 349,000 liters of water every second and in a year, more than 9.5 trillion liters, enough water to flood the entire District of Columbia to a depth of 55 meters, converting the Washington Monument into a tall lighthouse."

#### Great Falls Mule Drawn Boat Rides:

Take a trip back in time to the 1870s Ride along the historic C&O Canal in a boat pulled by mules. Experience rising 8 feet in a lock. Hear park interpreters in period clothing describe what life was like for the families that lived and worked on the

canal. \$8 for adults, \$6 for seniors and \$5 for children 4-15. Children under three ride free. The boat runs May to October, with a typical schedule on Saturday & Sunday - 11 a.m., 1:30 p.m., 3 p.m. Call ahead to confirm. 301-767-3714

**INSIDER'S TIP:** The Gold Mine Trail can be accessed at the top of the entrance to Great Falls, at the intersection of Falls Road and MacArthur Boulevard, or near the Great Falls Tavern Visitor's center. Trails, which can be used for running with some steep inclines, pass the remains of an old building that was used from 1900-1939 to mine gold.

#### BILLY GOAT TRAIL

Thousands hike the Billy Goat Trail every year, with access from the Old Angler's site or from the Great Falls Tavern Visitors Center or Carderock. The loop between the C&O Canal and Potomac River is less than five miles long but has steep and rocky sections. Bring water and wear good walking shoes. No flip flops or ballet slippers. Allow plenty of time to stop and enjoy spectacular views of the cliffs, Potomac River passing through the gorge and sensitive vegetation and rare plants. This hike that is marked by light blue trail blazes to keep visitors from trampling on Bear Island's many rare plants and sensitive vegetation. The trail can be rough and rocky with steep climbs. But the trail is one of the most popular hikes in all of the metropolitan area, which can be done by people of all ages.

**INSIDER'S TIP:** The park service seeks volunteer trail stewards willing to hike parts of the trail, educate visitors at the trailheads, protect the natural resources of Bear Island, ensure visitors are prepared for the strenuous hike, share stories about the sensitive vegetation, and reduce trampling of the Bear Island's many rare plants. Active trail stewards carry park radios for emergency communication and receive basic first aid training to help with minor injuries. [www.chohvip.org/billy\\_goats/](http://www.chohvip.org/billy_goats/)

#### Carderock Recreation Area

301-767-3731  
Reach this 200-acre part of the park from the Clara Barton Parkway at the Naval Surface Warfare exit. Rock climbers visit Carderock daily for its famous for





# C&O Canal National Park

cliffs. The recreation area includes playing fields, a large picnic pavilion available by reservation and access to the Potomac River and the Billy Goat Trail.

**INSIDER'S TIP:** Get involved on the river by joining the Bike Patrol, becoming a Billy Goat Trail Steward, or volunteering to help run the Canal Boat, or serving as a docent at the River Center at Lockhouse 8. [www.chohvip.org](http://www.chohvip.org)

## Old Angler's Inn Access

Across from 10801 MacArthur Blvd. Between Carderock and Great Falls, you can also get across the canal to the towpath and the River across from Old Angler's Inn on MacArthur Boulevard. A popular spot for kayakers and stand-up paddleboarders, and a great spot to find outdoor adventure companies teaching beginning to advanced paddleboarding, kayaking and canoeing. Hiking enthusiasts have quick access to the Billy Goat Trail from here, or those who simply want to take an evening stroll or bike ride along the Berma Road or around Widewater, the area of the canal used for turning large boats around..

## Swain's Lock

Swain's Lock Road (off River Road) Campsites are available at Swain's Lock, one of the largest of the canal lockhouses. The lockhouse is named for Jess Swain, a lock-keeper in the early 1900s whose father helped in the excavation and construction of the canal. After running a boat rental and refreshment stand at Swain's Lock for almost a century, the family ceased operations in 2006.

## Pennyfield Lock

Pennyfield Road (off River Road) The three-mile walk from Pennyfield Lock to Violette's Lock takes you through many kinds of bird habitat and around Blockhouse Point. Pennyfield Lock was President Grover Cleveland's favorite destination when he went on fishing excursions, according to the Potomac Master Plan. The Pennyfield Lockhouse, built in 1879 inland from the lock house, was the home of lock-keeper Charles W. Pennyfield.

**INSIDER'S TIP:** Pennyfield Lock is also home to a lockhouse built in 1830 that you can rent by the night. The Canal Quarters Interpretive Program invites visitors to stay in a historic lockhouse for a day and night to learn about the living conditions of a lockkeeper's family. [www.canalquarters.org/](http://www.canalquarters.org/)

## Blockhouse Point Conservation Park

14750 River Road,  
Darnestown, MD 20854



(301) 670-8080  
[www.blockhousepoint.org](http://www.blockhousepoint.org)

Those who know the 630 acres of land that straddles River Road between Tobytown and Callithea Farm call Blockhouse Point the jewel of Potomac. The natural and cultural resources at Blockhouse Point are amongst the most valuable in the country.

The park contains a variety of exceptional and rare habitat, including mature upland forest, floodplain forest, wetlands, streams and river-rock outcrops. Nine species of threatened, endangered or watchlist species of plants have been identified in the park, along with 25 species of fish, nine species of amphibians, four species of reptiles, 39 species of nesting birds and 10 species of mammals.

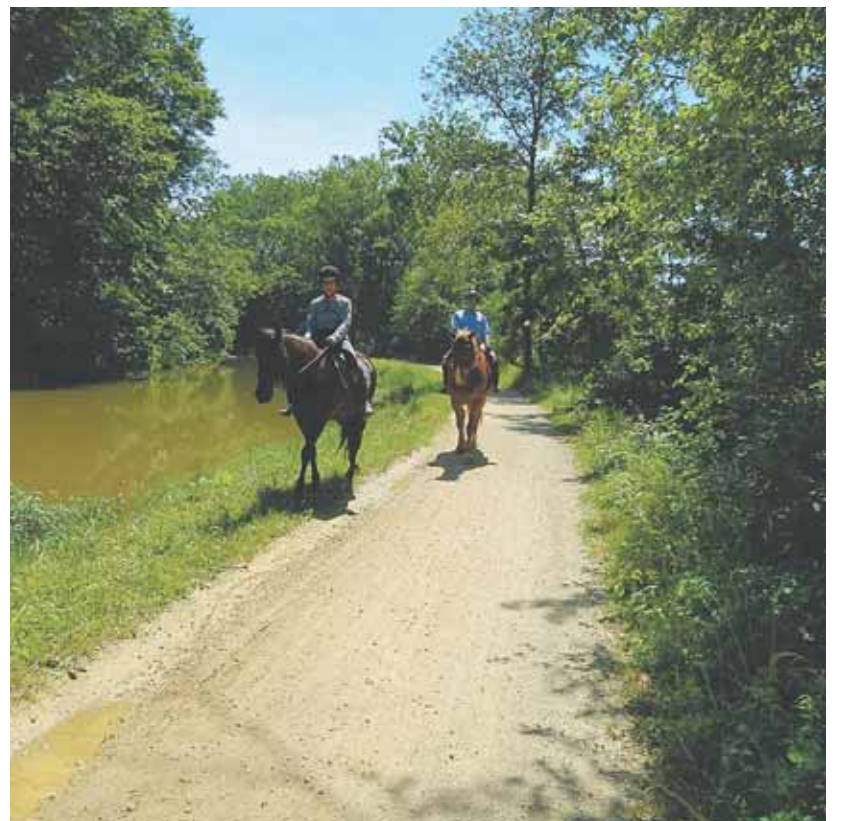
Blockhouse Point also tells of Potomac's history. During the Civil War, the 19th Regiment Massachusetts Voluntary Infantry built three blockhouses in 1862 to guard Violette's Lock and Pennyfield Lock, taking advantage of panoramic views from Blockhouse Point. Union sentries kept watch for Confederate movements across the river and at area fords.



SEE POTOMAC, PAGE 11



# POTOMAC NEWCOMERS & COMMUNITY GUIDE



## Potomac Insider's Guide to Parks

### 33 Potomac Community Center

11315 Falls Road  
240-777-6960  
www.montgomerycounty.gov/rec

This is Montgomery County's busiest community center, providing a variety of recreation activities for all ages such as open gym, arts and crafts, exercise/leisure classes, group support meetings and socials, senior adult activities through the Potomac neighborhood, Senior program, area and county-wide sports programs, summer camps, programs for individuals with special needs, children and adult holiday parties, volunteer opportunities and more. Facilities include a gymnasium, exercise room, meeting rooms, art room, lounge area, community room and social hall. The outdoor area includes two baseball fields, lighted basketball and tennis courts, and a former in-line hockey rink. The Center offers table tennis, billiards and foosball, a gymnasium, weight room, social room, meeting rooms, and hundreds of classes through the Montgomery County Recreation Department. The Montgomery County Recreation Dept., along with the Friends of the PCC, Inc. is working to renovate and reopen the outside inline rink for children and adults with special needs, with opening day on Sept. 10 at 11:30 a.m.

The Friends of the PCC, Inc. is a non-profit organization which works in conjunction with the Montgomery County Recreation Department to support the wide array of activities offered by the PCC as well as raise monies for the Center.

**INSIDER'S TIP:** You're invited to the Potomac Adaptive Sports Court Dedication Ceremony is Sept. 10, 2015 at 11:30 a.m.

Parents with children in grades three to six can register them now for Club Friday. Club Friday which began in 1991 is a fun-filled supervised evening of different activities. Club Friday will meet at PCC beginning Oct. 9 into March, 7-9 pm.

### 34 Bette Carol Thompson Scotland Community Center

7700 Scotland Drive  
301-983-4455

Now named the Bette Carol Thompson Scotland Community Center, the rebuilt facility opened in November 2014. A larger gymnasium and modern interiors are a focal point. Upgrades to the site include improved landscaping and parking, meeting green building and sustainability goals; energy guidelines, and the Americans with Disabilities Act.

### 35 Glen Echo Park

7300 MacArthur Blvd.,  
Glen Echo  
www.glenechopark.org

Originally a Chautauqua retreat, then an amusement park, Glen Echo National

Park now hosts a variety of arts, environmental and history programs.

Classes are offered in pottery, painting, photography, glass art, silversmithing, textiles and other arts, as well as in dance, writing and music.

The famous 1921 Dentzel Carousel in the center of the park has been giving rides to the public for 90 years.

The restored carousel is open for rides in August, Wednesday, Thursday, and Friday, 10 a.m. - 2 p.m. and Saturday and Sunday, 12 - 6 p.m. In September, Saturday and Sunday, 12 to 6 p.m.

Theatre (www.adventuretheater.org, 301-634-2270) is one of the area's longest running children's theater companies, and the Puppet Co. Playhouse (www.puppetco.org) offers shows as well as was for children to be involved.

### 36 McKee Beshers Wildlife

### Management Area

Located on River Road in Western Montgomery County, McKee-Beshers WMA is a 2,000-acre tract in a mixture of woodlands, fields, wooded bottomland and managed wetland impoundments (green-tree reservoirs). The wildlife management area shares a common boundary with the National Park Service Chesapeake and Ohio Canal to the south and borders Seneca Creek State Park, a 1,200-acre public hunting area, on the east.

McKee-Beshers WMA provides habitat for a great diversity of wildlife species including deer, wild turkey, waterfowl, over 200 species of songbirds, and numerous reptiles and amphibians. Biologists deliberately flood forests during the fall and winter in "greentree reservoirs." These attract colorful wood ducks as well as other waterfowl which migrate through or spend the winter here.

Hikers will find trails for miles and miles, meandering through the forests, fields and wetlands. Hunters enjoy the pursuit of white-tailed deer, wild turkey, woodcock, squirrels, waterfowl and many other species.

Roads are maintained and suitable for hiking, nature photography, birding, hunting and other recreational activities. Visitors to the management area should be aware of biting insects, mosquitoes and ticks from April-December. Area is wet most of the year, wear appropriate footwear.

### 37 Serpentine Barrens Conservation Park North

12860 Piney Meeting House Road

### 38 Serpentine Barrens Conservation Park South

11825 Glen Road

The Serpentine Barrens Natural Area is considered one of the most important natural areas in the county because of its unique geology and plant community.

Serpentine ecosystems are globally rare and occur intermittently in an arc east of the Appalachian Mountains from Alabama to Maine. The trees are unusually small relative to their age because of the challenging growing conditions of serpentine soils. Therefore, forests appear to be early successional, but in reality are in a climax condition. Oaks as old as 175 years old will have a diameter of trees you would expect to be one or two decades old.

The large contiguous forest of the Serpentine Barrens Conservation Park provides critical habitat for forest interior dwelling species, particularly birds. These species require large unbroken tracts of forest to successfully breed. Large contiguous forest habitat is becoming increasingly scarce in Montgomery County as development continually fragments woodlands into smaller isolated tracts.

More than 60 species of birds have been detected in the park, including a significant number of forest interior dwelling species such as Louisiana waterthrush, scarlet tanager, ovenbird, pileated woodpecker, and barred owl.

Mammals include common species such as red fox, white-tailed deer and gray squirrel, as well as less common species such as eastern coyote.

Reptiles include most of the common species of the County as well as the less common eastern hognose snake, five lined skink, spotted turtle and a curiously abundant population of box turtles.

Wetlands and vernal pools provide breeding habitat for spotted salamanders, marbled salamanders, wood frogs, spring peepers and other amphibians.

### 39 Callithea Farm Special Park

15000 River Road

Callithea Farm Park is a 97 acre property located adjacent to the M-NCPPC equestrian trails at Blockhouse Point Conservation Park and the C&O Canal. Horse boarding is available. Contact the farm manager at 301-977-7682.





# Enjoy the Potomac

FROM PAGE 7

[http://www.montgomeryparks.org/PPSD/ParkTrails/trails\\_MAPS/trailmap\\_pdfs/blockhouse\\_trails.pdf](http://www.montgomeryparks.org/PPSD/ParkTrails/trails_MAPS/trailmap_pdfs/blockhouse_trails.pdf)

**INSIDER'S TIP:** Montgomery County developed a brochure so people can walk

the footsteps of Union Soldiers. Blockhouse Point, often referred to as the jewel of Potomac, is an area to enjoy peace, solitude, and an example of the natural and cultural resources of Potomac that rival the most valuable in the country.

[http://www.montgomeryparks.org/PPSD/Cultural\\_Resources\\_Stewardship/](http://www.montgomeryparks.org/PPSD/Cultural_Resources_Stewardship/)

[heritage/documents/blockhouse\\_broch\\_web.pdf](http://www.montgomeryparks.org/heritage/documents/blockhouse_broch_web.pdf)

## Violette's Lock

Violette's Lock Road (off River Road)  
Violette's Lock offers one of the more beautiful views of the sunset over the Potomac River.

## Riley's Lock

Riley's Lock Road (off River Road)  
Riley's Lock features a boat ramp on Seneca Creek, the busiest in Montgomery County, that allows easy access to a quiet and inviting part of the Potomac River for canoes, kayaks, stand-up paddleboards and small motorboats. The Seneca Creek Aqueduct, opened in 1833 and made of red sandstone, allowed thousands of canal boats to move across Seneca Creek from 1833 to 1924, the year of the canal's closing. The aqueduct was protected by Union garrisons during the Civil War.

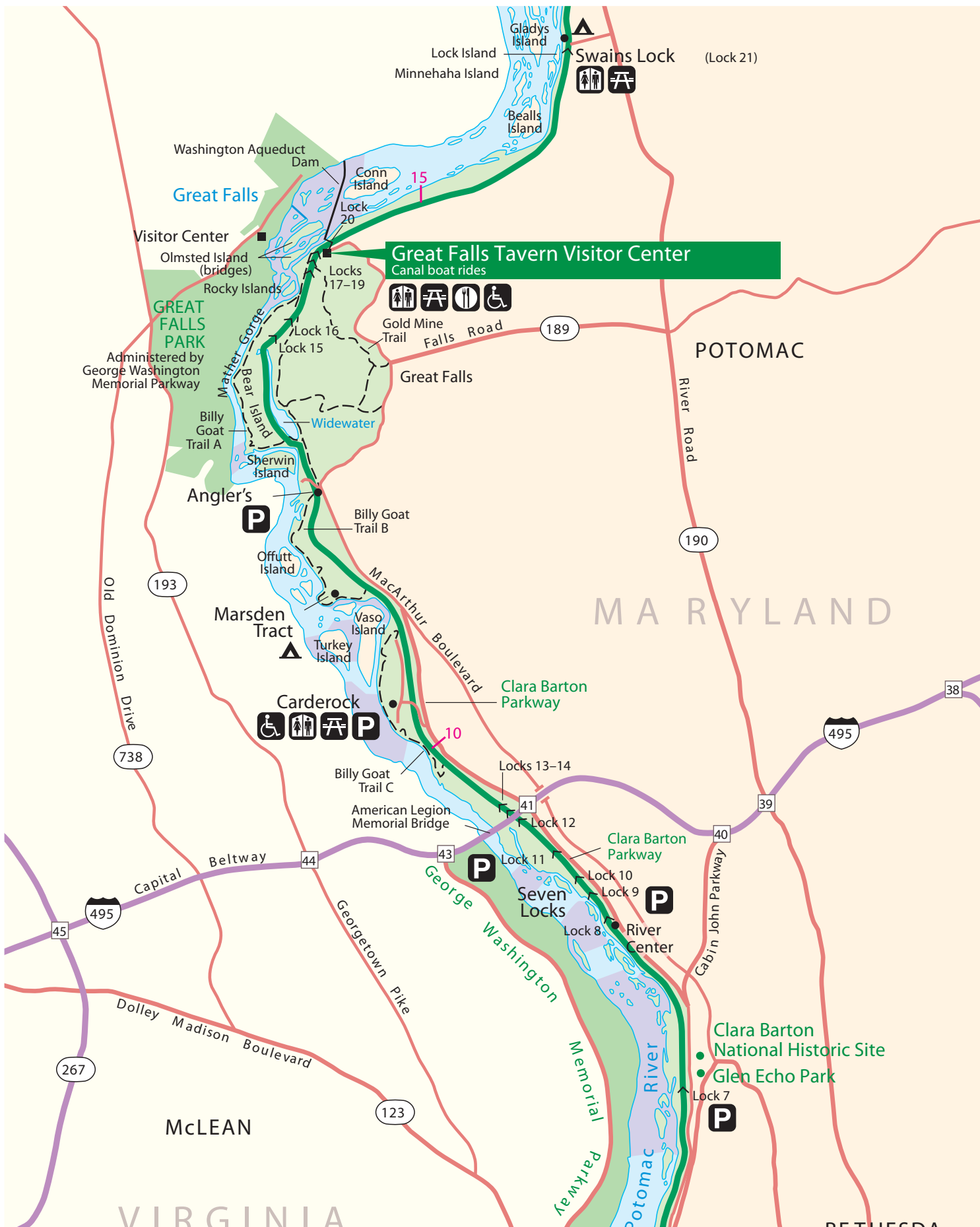
Riley's Lockhouse is open for tours on Saturday and Sunday, 1-4 p.m. in May and June, and September and October. Volunteers in period costume guide you through one of the C&O Canal's original lockhouses to explore the life of a lock-keeper.

Call the Great Falls Tavern Visitor Center to confirm, 301-767-3714.

**INSIDER'S TIP:** You can borrow a bike and helmet for free at the Great Falls Tavern, courtesy of the volunteer-run C&O Canal Bike Loaner program. The group reports lending bikes to nearly on a weekend of good weather.

## The River Center (Lockhouse 8)

7906 Riverside Drive, Cabin John  
[potomac.org/river-center](http://potomac.org/river-center)  
The River Center at Lockhouse 8, reached from the Clara Barton Parkway between Carderock and Cabin John, is open Saturdays and Sundays from May through October, 10 a.m. - 2 p.m., operated by volunteers from Potomac Conservancy. Stop in for a tour, to browse educational exhibits, and meet volunteer guides. Visit the River Center on select Sundays for Voices of the River to learn more about the history, ecology, and diversity of the Potomac River, as told by storytellers, musicians, and scientists. Throughout the season, the Conservancy also hosts a variety of hands-on appreciation and restoration activities at the River Center. Canoes and lifejackets available. All activities are free and open to the public. Housed in an historic lockhouse along the C&O Canal, the River Center at Lock 8 offers visitors a glimpse into the history of the Canal and the future of the Potomac River. The next cleanup day is Sept. 19, 10 a.m.-2 p.m. If you are interested in volunteering contact Katie Blackman at [blackman@potomac.org](mailto:blackman@potomac.org) or 301-608-1188 x213.





# ENTERTAINMENT

A SAMPLING OF ANNUAL  
COMMUNITY EVENTS

## August 2016

**Great Falls Tavern, Mule-Drawn Canal Boat Rides.** Friday-Sundays, through Sept. 5, 11 a.m., 1:30 p.m., and 3 p.m. at Great Falls Tavern Visitors Center, 11710 MacArthur Blvd. Take a boat ride along the historic C&O Canal. Tickets are \$8 for adults, \$6 for seniors, \$5 for children, and children 3 and under ride for free. Visit [www.nps.gov/choh/planyourvisit/great-falls-canal-boat-rides.htm](http://www.nps.gov/choh/planyourvisit/great-falls-canal-boat-rides.htm).

### WEDNESDAYS-SUNDAYS IN AUGUST

**Carousel Rides.** Wednesday-Friday, 10 a.m.-2 p.m.; Saturday-Sunday 12-6 p.m. Take a ride on the historic 1921 Dentzel Carousel at Glen Echo Park. Tickets are \$1.25 per ride. Visit [www.glenechopark.org/carousel](http://www.glenechopark.org/carousel).

### AUG. 31-SEPT. 24

**The Trawick Prize Exhibition.** Wednesday-Saturday, 12-6 p.m. at Gallery B, 7700 Wisconsin Ave., Bethesda. This exhibition features The Trawick Prize finalists for the Bethesda Contemporary Art Awards. Visit [www.bethesda.org](http://www.bethesda.org) for more.

## September 2016

### SATURDAY-MONDAY/SEPT. 3-5

**Labor Day Art Show.** 12-6 p.m. at Spanish Ballroom – Glen Echo Park, 7300 MacArthur Blvd., Glen Echo. Find art of various media as well as some children's work. Free. Visit [www.glenechopark.org](http://www.glenechopark.org) for more.

### FRIDAY/SEPT. 2

**Art Walk in the Park.** First Fridays through Sept. 6-8 p.m. at Glen Echo Park, 7300 MacArthur Blvd., Glen Echo. Enjoy pottery, calligraphy, glass work, and much more. Visit [www.glenechopark.org](http://www.glenechopark.org) for more.

### SATURDAY-MONDAY/SEPT. 3-5

**Annual Yellow Barn Studio and Gallery Drawing Exhibition.** 12-5 p.m. at 7300 MacArthur Blvd. In cooperation with the Friends of the Yellow Barn, an exhibition open to all members of the Yellow Barn. A closing reception will be held on Monday, Sept. 7, 5-6:30 p.m. Visit [www.yellowbarnstudio.com](http://www.yellowbarnstudio.com)

**Labor Day Art Show.** 12-6 p.m. at Spanish Ballroom – Glen Echo Park, 7300 MacArthur Blvd., Glen Echo. Find art of various media as well as some children's work. Free. Visit [www.glenechopark.org](http://www.glenechopark.org) for more.

### SATURDAY/SEPT. 3

**Labor Day Open House.** 12-4 p.m. at Glen Echo Park – Photoworks Gallery, 7300 MacArthur Blvd., Glen Echo. Meet Photoworks faculty as they present "Signature Images" from their portfolio of work. Free. Visit [www.glenechophotoworks.org](http://www.glenechophotoworks.org).

### MONDAY/SEPT. 5

**Irish Music and Dance Showcase.** 1-6 p.m. at 7300 MacArthur Blvd. Attend two days of Irish music and dance presented by the Glen Echo Park Partnership for Arts and Culture and the Irish Inn at Glen Echo. Free. Visit [www.glenechopark.org](http://www.glenechopark.org) for more.

**Labor Day Parade.** 1 p.m. in the streets of Olde Towne Gaithersburg. Celebrate Labor Day with performances, antique cars, marching bands, and more. Free. Visit [www.gaithersburgmd.gov/leisure/labor-day-parade](http://www.gaithersburgmd.gov/leisure/labor-day-parade).

### SATURDAY-SUNDAY/SEPT. 10-OCT. 30

**Great Falls Tavern, Mule-Drawn Canal Boat Rides.** 11 a.m., 1:30 p.m., and 3 p.m. at Great Falls Tavern Visitors Center, 11710 MacArthur Blvd. Take a boat ride along the historic C&O Canal. Tickets are \$8 for adults, \$6 for seniors, \$5 for children, and children 3 and under ride for free. Visit [www.nps.gov/choh/planyourvisit/great-falls-canal-boat-rides.htm](http://www.nps.gov/choh/planyourvisit/great-falls-canal-boat-rides.htm).

### SATURDAY/SEPT. 10

**Potomac Library Book Sale.** 10 a.m.-1 p.m. at 10101 Glenolden Drive. Sponsored by the Friends of the Library, Potomac Chapter. Runs most months. Most hardbacks are \$1 and paperbacks are \$.50. Visit [www.montgomerycountymd.gov/library/branches/potomac.html](http://www.montgomerycountymd.gov/library/branches/potomac.html).  
**Tomato Festival.** 12-5 p.m. at North Bethesda Market, 20 Paseo Drive, North Bethesda. Cooking competitions, tomato-themed promotions, displays, live music,



**The Annual Potomac Day is Saturday, Oct. 22. Arts and entertainment for all ages, ranging from rides for children to an antique show and business fair. The highlight is the Potomac Day Parade at 10:30 a.m., featuring hundreds of entrants, including bands, horses, antique cars, school groups, scouting organizations, and candidates for elected office.**

spaghetti eating contest and more. Free. Visit [www.nobetomatofestival.com](http://www.nobetomatofestival.com).

### SUNDAY/SEPT. 11

**Parks Half Marathon.** 7-10 a.m. Run from Rockville to Bethesda. Showcases Montgomery County's park system. Sponsored by Montgomery County Road Runners Club. Registration is \$67 until Aug. and \$73 Sept. 1-9. Visit [www.mcrrc.org](http://www.mcrrc.org).

**Carnival of Chocolates.** 11 a.m.-3 p.m. at Rockville Town Square. This year's event will include chocolate tastings from local chocolatiers, a children's fun run (100 yard dash), live music, games, and two children's story times. Proceeds benefit The Dwelling Place, a non-profit dedicated to homeless families. Free to attend. Visit [www.tdp-inc.org](http://www.tdp-inc.org) for more.

**All-You-Can-Eat Crab Feast Fundraiser.** 1-5 p.m. at 5020 Battery Lane. The Bethesda-Chevy Chase Rescue Squad Alumni Association will hold a crab feast fundraiser – all-you-can-eat steamed crabs, fried chicken, potato salad, baked beans, applesauce, and rolls, along with beer and soda. Tickets cost \$45 per person in advance (or \$50 after Sept. 5). Call 301-442-4136.

### SATURDAY/SEPT. 17

**Days End Farm Horse Rescue Fall Festival.** 11 a.m.-4 p.m. at 1372 Woodbine Road, Woodbine. Find DEFHR alumni horses returning to compete in the Rescue Makeover competition, food, music, vendors, and more. Admission is \$2 for adults and \$1 for children. Visit [www.defhr.org](http://www.defhr.org) for more.

**Park After Dark.** 6 p.m. at C&O Canal National Historical Park – Great Falls Tavern, 11710 MacArthur Blvd., Potomac. Attendees enjoy live music, food, libations, live and silent auction items, a campfire and more. This year is the National Park Service's 100<sup>th</sup> year. Take a look back at the past 100 years, and a look forward towards the Park's future. Tickets are \$175. Visit [www.parkafterdark.org](http://www.parkafterdark.org).

### SUNDAY/SEPT. 18

**Montgomery County Out of the Darkness Community Walk.** 8 a.m.-12 p.m. at Rockville Town Center, 30 Maryland Ave., Rockville. This walk, in conjunction with 200 communities across the country this fall, benefits the American Foundation for Suicide Prevention. Visit [www.afsp.org](http://www.afsp.org) for more.

### SUNDAY/SEPT. 25

**Cabin John Kids Run.** 9-10 a.m. at Cabin John Regional Park. Sunday, Sept. 15. A mile run, half-mile run and quarter mile young run is offered. Registration is race-day only. Free for runners 18 and under. See [www.mcrrc.org](http://www.mcrrc.org).

**Then & Wow 2016.** 11 a.m.-4 p.m. at 7300 MacArthur Blvd. Glen Echo Park's annual celebration of the park's past and present. Magicians, carousel rides, arcade games, face painting, mini golf, exhibits, tours and more. Free. See [www.glenechopark.org](http://www.glenechopark.org).

**F.E.A.S.T. at VisArts 2016.** 11:30 a.m.-3 p.m. at VisArts at Rockville, 155 Gibbs St., Rockville. Continuing in the spirit of sustainable creative practices that define, reflect on, and stimulate action in the community, F.E.A.S.T. at VisArts 2016 (Funding Emerging Artists with Sustainable Tactics) features proposals on the theme "Future Framers: Envisioning Rockville in 2040." Tickets are \$30, \$15 for students. Visit [www.visartsatrockville.org](http://www.visartsatrockville.org) for more.

## October 2016

### SATURDAY/OCT. 1

**Taste of Bethesda.** 11 a.m.-4 p.m. along Norfolk, St. Elmo, Cordell, Del Ray, and Auburn avenues. Local restaurants and entertainment come together for the 26th Annual Taste of Bethesda. Admission to the festival is free, taste tickets are sold in bundles of 4 for \$5. Visit [www.bethesda.org](http://www.bethesda.org) for more.

**Taste in Potomac.** 6:30-11:30 p.m. at Bolger Center, 9600 Newbridge Drive, Potomac. The Taste in Potomac is a community event that raises funds to help children in foster care find adoptive families. Tickets are \$175. Visit [www.adoptionstogether.org](http://www.adoptionstogether.org).

### SATURDAY/OCT. 8

**Potomac Library Book Sale.** 10 a.m.-1 p.m. at 10101 Glenolden Drive, Potomac. Sponsored by the Friends of the Library, Potomac Chapter. Runs most months. Most hardbacks are \$1 and paperbacks are \$.50. Visit [www.montgomerycountymd.gov/library/branches/potomac.html](http://www.montgomerycountymd.gov/library/branches/potomac.html).

### SATURDAY/OCT. 17

**Antique and Classic Car Show.** 11 a.m.-3:30 p.m. at Rockville Civic Center Park, 603 Edmonston Drive, Rockville. Find more than 500 antique and classic cars. Free. Visit [www.rockvillemd.gov](http://www.rockvillemd.gov) for more.

### SATURDAY/OCT. 22

**Potomac Day.** 8 a.m.-3 p.m. at 9812 Falls Road, Potomac. Arts and entertainment for all ages, ranging from rides for children to an antique show and business fair. The highlight is the Potomac Day Parade at 10:30 a.m., featuring hundreds of entrants, including bands, horses, antique cars, school groups, scouting organizations, and candidates for elected office. Free. Call the Potomac Chamber of Commerce at 301-299-2170 or visit [www.potomacchamber.org](http://www.potomacchamber.org).

## November 2016

### SUNDAY/NOV. 6

**Rockville 10K/5K.** 8:15-10 a.m. at King Farm Village Center, King Farm Boulevard, and Pleasant Drive, Rockville. Annual race. Race registration is \$34 until Oct. 29 and \$40 until of the event. Visit [www.rockville10k5k.com](http://www.rockville10k5k.com) for more.

### THURSDAYS THROUGH NOVEMBER

**Potomac Village Farmers Market.** 2-6:30 p.m. at Potomac United Methodist Church, 9908 S. Glen Road. Visit [www.potomacvillagefarmersmarket.net](http://www.potomacvillagefarmersmarket.net)  
**Potomac Community Center Open Flea Market.** Potomac Community

SEE ENTERTAINMENT, PAGE 14

[WWW.CONNECTIONNEWSPAPERS.COM](http://WWW.CONNECTIONNEWSPAPERS.COM)



**A peek through the window of the Glen Echo working Denzel carousel about to open to the public. Then & Wow, Glen Echo Park's annual celebration of the park's past and present, is held in September offering magicians, carousel rides, arcade games, face painting, mini golf and more.**



# NEWCOMERS & COMMUNITY GUIDE

## On the Ballot in Montgomery County

**V**oters in Potomac will choose candidates for President and Vice President, for U.S. Senate, for U.S. House of Representatives, several judicial elections and Board of Education.

The ballot in Maryland will not be certified until Sept. 14. Two County Charter Amendments, and possibly a third, plus a State Constitutional Amendment are expected, but detailed language has not yet been published.

Potomac is split between Congressional districts 6 and 8.

### U.S. Congress, District 8

Race to replace U.S. Rep. Chris Van Hollen, who won the Democratic nomination for U.S. Senate to replace retiring Sen. Barbara Mikulski.

[http://www.elections.maryland.gov/elections/2016/general\\_candidates/gen\\_cand\\_lists\\_2016\\_4\\_00808.html](http://www.elections.maryland.gov/elections/2016/general_candidates/gen_cand_lists_2016_4_00808.html)

Jamie Raskin (D)

Website [www.jamieraskin.com](http://www.jamieraskin.com)

Facebook [facebook.com/raskin.jamie](https://www.facebook.com/raskin.jamie)

Twitter @jamie\_raskin

Dan Cox (R)

Website [www.coxforcongress.org](http://www.coxforcongress.org)

Facebook [facebook.com/coxforcongress](https://www.facebook.com/coxforcongress)

Twitter @dancox4congress

### U.S. Congress, District 6

[http://www.elections.maryland.gov/elections/2016/general\\_candidates/gen\\_cand\\_lists\\_2016\\_4\\_00806.html](http://www.elections.maryland.gov/elections/2016/general_candidates/gen_cand_lists_2016_4_00806.html)

John Delaney (D) (incumbent)

Website [www.delaneyforcongress.com](http://www.delaneyforcongress.com)

Facebook [facebook.com/johndelaneyforcongress](https://www.facebook.com/johndelaneyforcongress)

Twitter @jdelaneyformd

Amie Hoebner (R)

Website [amieforcongress.com](http://amieforcongress.com)

Facebook [facebook.com/amieforcongress](https://www.facebook.com/amieforcongress)

Twitter @amieforcongress

### U.S. SENATE

[http://www.elections.maryland.gov/elections/2016/general\\_candidates/gen\\_cand\\_lists\\_2016\\_4\\_007-.html](http://www.elections.maryland.gov/elections/2016/general_candidates/gen_cand_lists_2016_4_007-.html)

Chris Van Hollen (D)

Website [www.vanhollen.org](http://www.vanhollen.org)

Facebook [facebook.com/vanhollenformd](https://www.facebook.com/vanhollenformd)

Twitter @vanhollenformd

Other [instagram.com/vanhollenmd](https://www.instagram.com/vanhollenmd)

## Upcoming Election Dates

Register by Oct. 18 to vote on Election Day, Nov. 8.

Montgomery Board of Elections

18753-210 N. Frederick Ave.

Gaithersburg MD 20879-3121

Mailing Addresses:

P.O. Box 4333 - Rockville MD 20849-4333

For Absentee Ballot Applications Only:

P.O. Box 10159 - Rockville MD 20849-0159

For Absentee Ballots Only:

P.O. Box 10369 - Rockville MD 20849-0369

Margaret A. Jurgensen, Election Director

240-777-8500

240-777-8505 (Fax)

[www.777vote.org/](http://www.777vote.org/)

Email Address:

[elections@montgomerycountymd.gov](mailto:elections@montgomerycountymd.gov)

Absentee Voting:

[absentee@montgomerycountymd.gov](mailto:absentee@montgomerycountymd.gov)

**Early Voting** for the General Election will occur from Oct. 27 to Nov. 3, 2016 (8 a.m. - 8 p.m.), including at the Potomac Community Center, 11315 Falls Road, Potomac.

Visit for more information and other early voting sites:

<http://www.montgomerycountymd.gov/Elections/EarlyVoting/2015EarlyVotingfor2016/EarlyVotingSitesfor2016.html>

### Voter lookup

<https://voterservices.elections.maryland.gov/VoterSearch>

Voter Registration

<https://voterservices.elections.maryland.gov/OnlineVoterRegistration/InstructionsStep1>

Kathy Szeliga (R)

Website [kathyformaryland.com](http://kathyformaryland.com)

Facebook [facebook.com/kathy.szeliga](https://www.facebook.com/kathy.szeliga)

Twitter @kathyformd

### Montgomery County Board of Education

The Board of Education consists of seven county residents elected by voters for a four-year term and a student elected by secondary school students for a one-year term. Board members are elected countywide but run at large, or from the Board district in which they reside. One At Large race plus races for District 2 and 4 will appear on all county ballots in November.

At Large:

Jeanette Dixon

[www.Jeanettedixon.org](http://www.Jeanettedixon.org)

Phil Kauffmann (Incumbent)

[www.philkauffman.com](http://www.philkauffman.com)

District 2

Brandon Orman Rippeon

Rebecca Smodrowski (Incumbent)

[www.rebeccaonboard.org](http://www.rebeccaonboard.org)

District 4

Shebra Evans

[www.shebraevans.com](http://www.shebraevans.com)

Anjali Reed

[Anjali4md.weebly.com](http://Anjali4md.weebly.com)

[http://www.elections.maryland.gov/elections/2016/general\\_candidates/gen\\_cand\\_lists\\_2016\\_4\\_by\\_county\\_16.html](http://www.elections.maryland.gov/elections/2016/general_candidates/gen_cand_lists_2016_4_by_county_16.html)

## YOGA CLASSES IN POTOMAC

### Kula Yoga

St. James Episcopal Church  
11815 Seven Locks Road

Monday – Friday: 9:30 A.M.

Wednesday: 7:30 P.M.

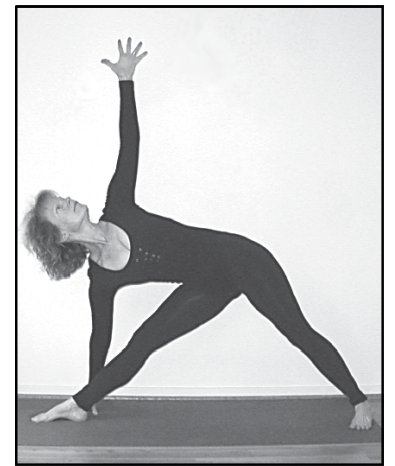
**For more information, please contact:**

Nancy Steinberg

240-994-5092

[nancy@kulayogaclass.com](mailto:nancy@kulayogaclass.com)

[www.kulayogaclass.com](http://www.kulayogaclass.com)





**SPRINKLES**



**Sprinkles**

**FREE Kiddie Size**

Catering to Potomac for 27 years  
**Super Premium Ice Cream**  
**40 Flavors**

- Fronana
- Fat-Free Frozen Yogurt
- **Sugar-Free** 8-Calorie Frozen Yogurt
- Espresso
- Donuts, Bagels & Pastries
- Homemade Fudge
- Catering

Potomac Place Shopping Center  
10148 River Road  
Potomac Village, Md. 20854  
Not affiliated with or owned or operated by Sprinkles Cupcakes, LLC.  
**301-299-8415**  
[Sprinklespotomac.com](http://Sprinklespotomac.com)  
Limit one coupon per customer  
Exp. 9/30/16  
(Children 12 & under only)

**POTOMAC ALMANAC**

**NEWCOMERS & COMMUNITY GUIDE**

IS PRODUCED BY  
CONNECTION NEWSPAPERS  
[WWW.CONNECTIONNEWSPAPERS.COM](http://WWW.CONNECTIONNEWSPAPERS.COM)  
LOCAL MEDIA CONNECTION LLC

FOR MORE INFORMATION,  
CALL 703-778-9431 OR EMAIL  
[SALES@CONNECTIONNEWSPAPERS.COM](mailto:SALES@CONNECTIONNEWSPAPERS.COM)



**Have questions about your hearing?  
We are here to help!**

Come see us for:

- Free baseline hearing screening
- Free consultation
- Risk-free 30-day hearing aid trial

9800 Falls Road,  
Suite 5  
Potomac, MD 20854



Kathy Grace, Au.D.

Call for appointment:  
**301-339-8583**  
[www.auditoryservices.com](http://www.auditoryservices.com)



# ENTERTAINMENT

FROM PAGE 12

Center, 11315 Falls Road, has been regularly scheduled on a biannual basis in November and May. Call the community center, 240-777-6960.

## NOV. 3-13

**Lessans Family Annual Book Festival.** Jewish Community Center of Greater Washington, 6125 Montrose Road, Rockville. Now in its 46th year, this 10-day festival boasts more than 20 author events, book signings and children's programs. Call 301-881-0100. See [www.jccgw.org](http://www.jccgw.org).

## SATURDAY/NOV. 12

**Potomac Library Book Sale.** 10 a.m.-1 p.m. at 10101 Glenolden Drive. Sponsored by the Friends of the Library, Potomac Chapter. Runs most months. Most hardbacks are \$1 and paperbacks are \$.50. Visit [www.montgomerycountymd.gov/library/branches/potomac.html](http://www.montgomerycountymd.gov/library/branches/potomac.html).

## SATURDAY/NOV. 19

**Dinner of Champions.** 7 p.m. at JCC of Greater Washington, 6125 Montrose Road, Rockville. The annual event honors those who have achieved success in the world of sports, and those who have made extraordinary contributions to the community. The dinner benefits the Jewish Community inclusion programs for individuals with special needs. Individual tickets are \$275. Visit [www.jccgw.org](http://www.jccgw.org) for more.

## THURSDAY/NOV. 24

**Turkey Chase.** 8:30 a.m. at 9401 Old Georgetown Road at Spruce Street. The Turkey Chase 10K Run benefits the YMCA Bethesda-Chevy Chase, YMCA's Youth and Family Services and the Bethesda-Chevy Chase Rotary Club Foundation. Includes a two-mile walk/run; wheelchairs welcome. Registration is \$10 for the Kid's Run, \$20 for the 2 mile race, and \$35 for the 10K. See [www.turkeychase.com](http://www.turkeychase.com).

## NOV. 25-DEC. 31

**Winter Lights Festival.** Sunday-Thursday, 6-9 p.m.; Friday-Saturday, 6-10 p.m. at Seneca Creek Park, 11950 Clopper Road, Gaithersburg. Winter Lights is a 3.5-mile drive through a holiday light show at Seneca Creek Park with more than 360 illuminated displays. Additional events include Wine Under the Lights, Run Under the Lights, Leashes 'n' Lights, and, S'More Lights & Trolley Rides. Visit [www.gaithersburgmd.gov/leisure/special-events/winter-lights-festival](http://www.gaithersburgmd.gov/leisure/special-events/winter-lights-festival).

## December 2016

**Christmas Tree Sale.** Cabin John Park Volunteer Fire Department, Station 10, 8001 River Road. Call 301-365-2255 or visit [www.cjpvfd.org](http://www.cjpvfd.org).

**Santa on Fire Engines Toy Collection.** A procession of fire engines run by the Cabin John Park Volunteer Fire Department, carry Santa on a tour of Potomac neighborhoods over the course of several evenings in December, collecting unwrapped new toys for needy children. Call 301-365-2255 or visit [www.cjpvfd.org](http://www.cjpvfd.org).

## DEC. 1-23

**Friends of the Yellow Barn.** The Yellow Barn Studio gives annual members show. Visit [www.glenechopark.org](http://www.glenechopark.org)

[www.yellowbarnstudio.com](http://www.yellowbarnstudio.com). Call 301-634-2222.

## SATURDAY/DEC. 3

**Bethesda's Winter Wonderland.** This seasonal event takes place in multiple locations, including concerts at Imagination Stage and in Bethesda's Woodmont Triangle. The event features caroling, ice sculpting, storytelling, holiday performances and hands-on craft activities for children. Call 301-215-6660 or visit [www.bethesda.org](http://www.bethesda.org).

## SATURDAY/DEC. 10

**Potomac Library Book Sale.** 10 a.m.-1 p.m. at 10101 Glenolden Drive. Sponsored by the Friends of the Library, Potomac Chapter. Runs most months. Most hardbacks are \$1 and paperbacks are \$.50. Visit [www.montgomerycountymd.gov/library/branches/potomac.html](http://www.montgomerycountymd.gov/library/branches/potomac.html).

## SUNDAY/DEC. 11

**Jingle Bell Jog.** 9-10:30 a.m. at the Rockville Senior Center, 1150 Carnation Drive. Registration is free for Montgomery County Road Runners Club, \$10 for non-members and \$5 for non-members under 18. See [www.mcrrc.org](http://www.mcrrc.org).

## January 2017

**The Maryland General Assembly** meets in Annapolis each year for 90 days to act on more than 2,500 bills including the state's annual budget. Potomac falls into two districts, District 15 and District 16, each one with one senator and three delegates. Visit [www.mlis.state.md.us](http://www.mlis.state.md.us).

**West Montgomery County Citizens Association.** Second Wednesday, 7:15-9 p.m. at Potomac Community Center, 11315 Falls Road. Attend the general meeting. See [www.wmcca.org](http://www.wmcca.org).

## February 2017

### THURSDAY-SATURDAY/FEB. 16-18

**Mid-Atlantic Jazz Festival.** 1750 Rockville Pike, Rockville. The festival provides live musical performances, workshops and seminars. See [www.midatlanticjazzfestival.org](http://www.midatlanticjazzfestival.org).

**West Montgomery County Citizens Association.** Second Wednesday, 7:15-9 p.m. at Potomac Community Center, 11315 Falls Road. Attend the general meeting. See [www.wmcca.org](http://www.wmcca.org).

## April 2017

### APRIL-AUG.

**Mule-Drawn Canal Boat Rides, Great Falls Tavern.** Call the C&O Canal National Historical Park at Great Falls visitor center, 301-767-3714 or visit [www.nps.gov](http://www.nps.gov).

**The Bethesda Literary Festival** is held annually in April. Features poets, authors, journalists, novelists, poetry slams, essay contests and youth book parties. Literary events take place in downtown Bethesda's bookstores, galleries and retail businesses, as well as the library and elementary school. Visit [www.bethesda.org](http://www.bethesda.org).

**Pike's Peek 10K.** 7:50 a.m. at the Shady Grove Metro Station. See [www.pikespeek10k.org](http://www.pikespeek10k.org).

### LATE APRIL, EARLY MAY

**"Blast from the Past."** Winston Churchill High School, 11300



FILE PHOTO BY KEN MOORE

**The mule-drawn canal boat at Great Falls normally launches with scheduled rides through the lock beginning in May. Call the C&O Canal National Historical Park at Great Falls visitor center, 301-767-3714.**

Gainsborough Road, Potomac. Attend an annual musical revue featuring student cast members, musicians and stage crew. Call 301-469-1200 or visit [www.mcps.k12.md.us/schools/churchills](http://www.mcps.k12.md.us/schools/churchills) for dates and more information.

### The Annual C&O Canal Pride Days.

This is a joint effort between the park and C&O Canal Trust that brings hundreds of volunteers into the park to conduct maintenance projects. Work at C&O Canal National Historical Park at Great Falls (Maryland) and other sites along the Potomac River and C&O Canal towpath. Call the Canal Trust at 301-714-2233, [www.canaltrust.org](http://www.canaltrust.org), or see the park website at [www.nps.gov/choh](http://www.nps.gov/choh)

### Potomac Watershed Cleanup.

This volunteer event is sponsored annually by Alice Ferguson Foundation. Last year, more than 23,898 volunteers picked up 1,203,543 pounds of trash including 1,328 tires, 13,214 cigarette butts, 17,594 plastic bags, and 251,100 beverage containers. Volunteers helped at many sites along the Potomac River in Potomac. See [www.fergusonfoundation.org](http://www.fergusonfoundation.org).

### West Montgomery County Citizens Association.

Second Wednesday, 7:15-9 p.m. at Potomac Community Center, 11315 Falls Road. Attend the general meeting. See [www.wmcca.org](http://www.wmcca.org).

## May 2017

**Potomac Horse Center Annual Spring Open House.** See [www.PotomacHorse.com](http://www.PotomacHorse.com).

**Run Aware 5K.** Race through woods, trails, and, if lucky, mud. Along with the 5K (Cross Country Series) race, there will be a 1K (Junior Participation Series) race. See [www.mcrrc.org](http://www.mcrrc.org).

### Potomac Village Farmers Market.

Through October (and sometimes into November), Thursdays, 2-6:30 p.m. Potomac United Methodist

Church, 9908 S. Glen Road at corner of Falls Road and Democracy Boulevard. Visit [www.potomacvillagefarmersmarket.net](http://www.potomacvillagefarmersmarket.net).

**Spring Festival.** Greek Orthodox Church of St. George, 7701 Bradley Blvd., Bethesda. The annual festival includes traditional Greek cuisine, outdoor/indoor dining, Greek dancing, church tours and Greek pastries. Call 301-469-7990 or visit [www.stgeorge.org](http://www.stgeorge.org).

### The Potomac Hunt Races.

10 a.m.-7 p.m. at 14401B Partnership Road, Poolesville. This annual May tradition celebrates the sport of steeplechase racing and benefiting local charities. Race day festivities include steeplechase racing, thoroughbreds and festival tailgate parties, a car show, pony rides and more. General admission is \$40 per vehicle and Patron tickets are \$225. See [www.potomachuntraces.com](http://www.potomachuntraces.com).

### Strawberry Festival.

Potomac United Methodist Church, 9908 S. Glen Road, Potomac. This festival dedicated to all things strawberry is traditionally held the weekend before Memorial Day. Call the church at 301-299-9383 or visit [www.potomac-umc.org](http://www.potomac-umc.org).

### FRIDAY-SUNDAY/MAY 5-7

**The Landon Azalea Garden Festival.** Perkins Garden and the Landon campus, 6101 Wilson Lane, Bethesda. The annual festival dates back to the mid-1950s when Landon's founders, Paul and Mary Lee Banfield opened the newly acquired azalea garden to the public. Call 301-320-3200 or visit [www.landon.net](http://www.landon.net).

### SUNDAY/MAY 7

**Mark's Run.** 8-10 a.m. at Triplett Field, Bordley Stadium. A 5-K race and one-mile run also takes place during the Landon Azalea Garden festival. Mark's Run is held each year in memory of alumnus Mark Ferris '94, who lost his battle with juvenile diabetes. The run raises more than \$50,000 for the Mark Ferris

## A SAMPLING OF ANNUAL COMMUNITY EVENTS

Scholarship Fund and \$75,000 to the Joslin Diabetes Center. Call 301-320-3200 or visit [www.landon.net](http://www.landon.net).

## SATURDAY-MONDAY/MAY 27-29

**Hometown Holidays** is a Memorial Day festival and parade in the City of Rockville with concerts, children's crafts and games. Call 240-314-5022 or visit [www.rockvillemd.gov](http://www.rockvillemd.gov).

## MAY-JULY

**Bethesda Summer Concert Series.** Free. Last year's Thursday concerts took place at Veterans Park, at the corner of Norfolk and Woodmont avenues. See [www.bethesda.org](http://www.bethesda.org).

## West Montgomery County Citizens Association.

general meeting, second Wednesday, Potomac Community Center, 7:15-9 p.m. Public is welcome. See [www.wmcca.org](http://www.wmcca.org).

## June 2017

Attend **Imagination Bethesda**, 22nd annual children's street festival celebrating the arts. The festival features costume characters, face painters, international dance troupes, theater performances, a moon bounce and a variety of hands-on arts activities. Call 301-215-6660 or see [www.bethesda.org](http://www.bethesda.org).

## JUNE 26-JULY 2

**Quicken Loans National.** This event features 120 PGA Tour professionals at Congressional Country Club in Bethesda who will compete for millions. The event raises funds and awareness for the Tiger Woods Foundation while paying tribute to U.S. armed forces. See [www.tigerwoodsfoundation.org](http://www.tigerwoodsfoundation.org).

## Glen Echo Park's Summer Concert Series.

begins in June on Thursday evenings. Free. See [www.glenechopark.org](http://www.glenechopark.org). 301-634-2222.

## July 2017

**Autism Speaks Annual 5K** run and one-mile walk benefits research on autism. Last year's event raised more than \$230,000. See [www.autismspeaks.org](http://www.autismspeaks.org) or email [autismspeaks5K@autismspeaks.org](mailto:autismspeaks5K@autismspeaks.org).

## Montgomery County Fairgrounds 4th of July Fireworks.

activities include live music, games and food. Call 301-258-6350. See [www.gaithersburgmd.gov](http://www.gaithersburgmd.gov)

## Montgomery College Rockville Campus 4th of July Fireworks.

Rockville. Activities include live music and food. Call 240-314-5022. See [www.rockvillemd.gov](http://www.rockvillemd.gov).

## The Potomac Whitewater Festival.

in late June or early July is an annual fundraising event that celebrates kayaking in the Potomac River. Offers races for kayakers and clinics and activities for the public. See [www.potomacfest.com](http://www.potomacfest.com) or [anadventures.com](http://anadventures.com).

## Bethesda Outdoor Movies.

Annual outdoor movie series at corner of Norfolk and Auburn avenues. Contact 301-215-6660 or visit [www.bethesda.org](http://www.bethesda.org).

## August 2017

**Riley's Rumble Half-Marathon.** See [www.mcrrc.org](http://www.mcrrc.org).

## Montgomery County Agricultural Fair.

is a favorite destination each August. See [www.mcgafair.com](http://www.mcgafair.com).



# Potomac REAL ESTATE

PHOTOS BY DEB STEVENS/THE ALMANAC

## January~June, 2016 Top Sales

322 POTOMAC HOMES SOLD BETWEEN \$4,275,000-\$360,000 FROM JANUARY TO JUNE, 2016.

**10** 10817 Red Barn Lane — \$2,275,000

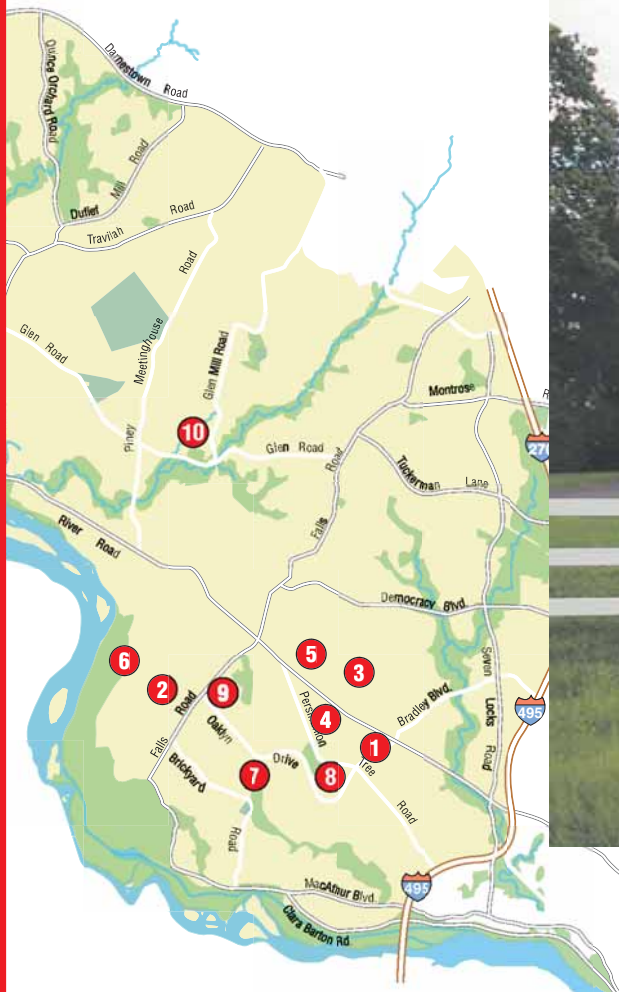


**3** 9704 Spicewood Lane — \$3,020,000

**6** 23 Stanmore Court — \$2,494,988



**5** 9912 Bencross Drive — \$2,800,000



**1** 9001 Congressional Court — \$4,275,000



**7** 10020 Avenel Farm Drive — \$2,350,000

Address	BR	FB	HB	Postal	City	Sold Price	Type	Lot AC	PostalCode	Subdivision	Date Sold
1 9001 CONGRESSIONAL CT	7	7	2	POTOMAC	...	\$4,275,000	Detached	2.03	20854	BRADLEY FARMS	06/08/16
2 10807 PLEASANT HILL DR	9	9	2	POTOMAC	...	\$3,500,000	Detached	5.13	20854	POTOMAC FALLS	01/20/16
3 9704 SPICEWOOD LN	6	6	2	POTOMAC	...	\$3,020,000	Detached	2.59	20854	FALCONHURST	04/15/16
4 9036 BRONSON DR	6	8	2	POTOMAC	...	\$3,000,000	Detached	2.19	20854	BRADLEY FARMS	02/19/16
5 9912 BENCROSS DR	5	6	2	POTOMAC	...	\$2,800,000	Detached	2.15	20854	FALCONHURST	04/08/16
6 23 STANMORE CT	5	6	3	POTOMAC	...	\$2,494,988	Detached	2.00	20854	GREAT FALLS ESTATES	04/11/16
7 10020 AVENEL FARM DR	6	5	2	POTOMAC	...	\$2,350,000	Detached	0.47	20854	AVENEL	04/15/16
8 8501 RAPLEY PRESERVE CIR	5	6	2	POTOMAC	...	\$2,350,000	Detached	0.57	20854	AVENEL	05/31/16
9 9418 THRUSH LN	9	7	4	POTOMAC	...	\$2,275,000	Detached	0.77	20854	WILLIAMSBURG GARDENS	03/10/16
10 10817 RED BARN LN	4	5	1	POTOMAC	...	\$2,275,000	Detached	2.32	20854	POTOMAC OUTSIDE	05/11/16

COPYRIGHT 2016 REAL ESTATE BUSINESS INTELLIGENCE. SOURCE: MRIS AS OF JULY 15, 2016.





## OUR LADY OF MERCY CATHOLIC CHURCH

Rev. William Byrne, Pastor

9200 Kentsdale Drive

Potomac, Maryland 20854

301-365-1415

www.olom.org

Join us at  
**SUNDAY**  
5pm Mass!

### MASS TIMES

Saturday Vigil: 5:00pm

Sunday: 7:00am, 8:30am, 10:45am,  
12:30pm & 5:00pm



## OUR LADY OF MERCY CATHOLIC SCHOOL

Mrs. Deborah Thomas, Principal

9222 Kentsdale Drive

Potomac, Maryland 20854

301-365-4477 www.schoololom.org

## OPEN HOUSE

October 6, 2016

8:30am-10:30am

Pre-K to 8th grade



Our Lady of Mercy School was recognized as a National Blue Ribbon School for Excellence in 1998, and for the second time in 2009 by the United States Department of Education.

## NEWCOMERS & COMMUNITY GUIDE

# Getting To Know ...

### Churchill Sports

**School:** Winston Churchill High School

**Mascot:** Bulldogs.

**School Colors:** Blue and green.

**Athletic Director:** Jesse Smith

**Football Coach:** Albert Song (second year).

The Bulldogs finished the 2015 season 2-8 and failed to qualify for postseason play.

**Boys' Soccer Coach:** Arnold Tarzy.

**Girls' Soccer Coach:** Haroot Hakopian.

**Boys' Basketball Coach:** Robert Bean.

**Girls' Basketball Coach:** Kate McMahon.

**Baseball Coach:** Scott Blackwood.

**Boys' Lacrosse Coach:** Jeff Fritz.

**Girls' Lacrosse Coach:** Jamie Frank.

**Rival School:** Wootton.

**What happened last year:** The Churchill boys' and girls' lacrosse teams ruled the 4A/3A West region in 2016.

The boys' team won its fourth region championship in the last five years, beating Urbana 14-5 on May 18. The girls' team also beat Urbana in the region final and captured its first region title since 2012. The boys' team suffered a season-ending 10-5 loss to Severna Park in the state semifinals on May 21 and finished the season with a 16-2 record. The Bulldogs went undefeated against Montgomery County public school competition for the second straight season. The girls' team lost to Leonardtown 11-6 in the state semifinals and ended the year with a 12-5 record.

The Vikings won their final game of the season over Bethesda Chevy-Chase 26-20, but finished with a 4-6 record and missed the postseason.

**Boys' Soccer Coach:** Dave Greene.

**Girls' Soccer Coach:** Greg Herbert.

**Boys' Basketball Coach:** Chris Lun.

**Girls' Basketball Coach:** Pete Kenah.

**Baseball coach:** Joe Cassidy.

**Boys' lacrosse coach:** Thomas Rothert.

**Girls' lacrosse coach:** Katie Bitonti.

**What happened last year:** Prior to the 2015-16 season, the Whitman girls' basketball program had surpassed 20 victories in three straight seasons and made two trips to the state tournament, but the Vikings wanted more. Led by junior standout guard Abby Meyers and a group of talented seniors, Whitman returned to the state tournament for the third time in four years. This time, the Vikings wouldn't leave empty handed. Whitman defeated North Point 64-37 in the 4A state semifinals on March 10 and two days later beat Western 71-55 in the state final at Towson University to capture the program's first state championship since 1995.

### Wootton Sports

**School:** Thomas S. Wootton High School.

**Mascot:** Patriots.

**School Colors:** Red, white and blue.

**Athletic Director:** Christopher Thompson

**Football Coach:** Eddie Tolliver (fifth year).

The Patriots won their final two games of the season and finished the season at 4-6, but failed to qualify for postseason play.

**Field hockey coach:** Kearney Blandamer and Lesley Stroet.

**Boys' Soccer Coach:** Doug Schuessler.

**Boys' Basketball Coach:** Erick Graves.

**Girls' Basketball Coach:** Maggie Dyer.

**Baseball Coach:** JD Marchand.

**Boys' Lacrosse Coach:** Colin Thomson.

**Rival School:** Churchill.

### Whitman Sports

**School:** Walt Whitman High School.

**Mascot:** Vikings.

**School Colors:** Black, white and Columbia blue.

**Athletic Director:** Andy Wetzel

**Football Coach:** Jim Kuhn (10th year).

# WELCOME TO THE NEIGHBORHOOD



TRADITIONS • SPIRITUALITY • COMMUNITY

**Our synagogue family,  
your family synagogue!**



11510 FALLS ROAD • POTOMAC • MD • 20854

Ph. 301.299.7087

Web. www.HarShalom.org

Em. office@HarShalom.org