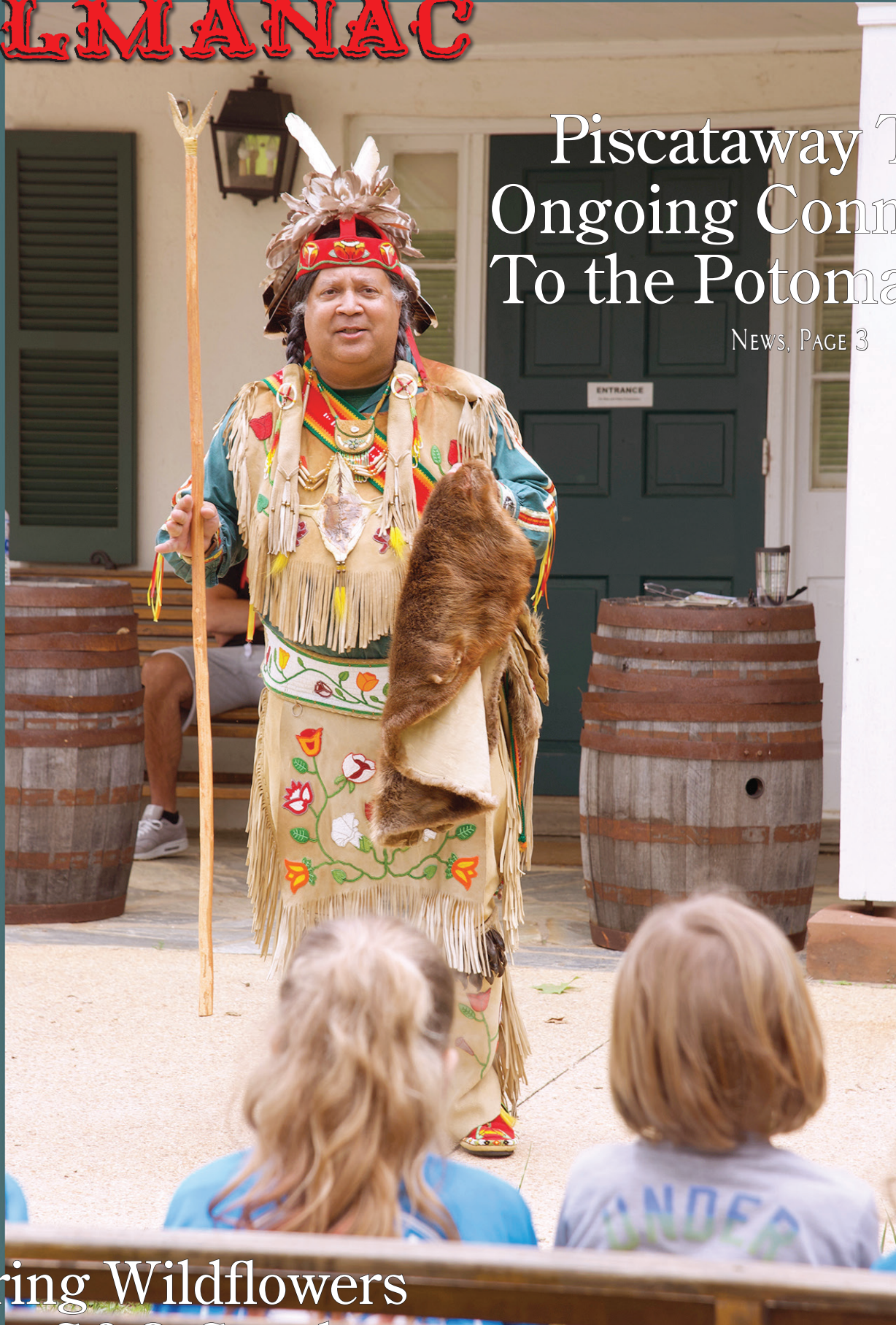


Potomac ALMANAC

Piscataway Tribal Ongoing Connections To the Potomac River

NEWS, PAGE 3



Piscataway Conoy
Native American
speaker Mario
Harley talks about
Piscataway Conoy
past and present at
Great Falls Tavern.

Discovering Wildflowers Along the C&O Canal

NEWS, PAGE 4

Obituary: Peter M. Kimm

PAGE 6

ATTENTION POSTMASTER:
TIME SENSITIVE MATERIAL.
REQUESTED IN HOME 5-16-19

U.S. POSTAGE
PAID
EASTON, MD
PERMIT #322

99¢ LARGE CHEESE PIZZA TUESDAYS

TRY TOPPING THIS DEAL!

Buy Any Large Pizza and Get a
Second Large Cheese for Only 99¢!*

EVERY TUESDAY
ALL DAY!

POTOMAC PIZZA

www.potomacpizza.com

Dine-in, Carry-out, Delivery & Catering
Serving Our Communities Since 1978

*Not valid with other offers • Toppings extra
Dine-in and carry-out only • No coupon necessary



CHEVY CHASE CENTER
301 951 1127
19 Wisconsin Circle
Chevy Chase, MD 20815

COLLEGE PARK
240 582 5242
7777 Baltimore Avenue
College Park, MD 20740

POTOMAC PROMENADE
301 299 7700
9812 Falls Road
Potomac, MD 20854

TRAVILLE VILLAGE CENTER
301 279 2234
9709 Traville Gateway Drive
Rockville, MD 20850

Piscataway Conoy Tribe of Maryland Shares History, Present

Piscataway continue connection to the Potomac River.

The Piscataway people and their ancestors have lived in Maryland for more than 13,000 years. All Piscataway are conscious of a history that reaches back long before Europeans had invaded their homeland. Despite having endured the effects of colonialism for nearly 400 years, the Piscataway continued to thrive, leaving their mark on the history of the region, according to a report by Many place names throughout the region, for example, are derived from Algonquian words used by the Piscataway.

The Piscataway Conoy were recognized in 2012 by then-Gov. Martin O'Malley after decades of lobbying. "American Indians have, through their cultural heritage, historical influence, and participation in public life, and helped to make the State of Maryland the great State that it is today," the orders read, according to press reports from the time.

They first encountered Jesuit missionaries in 1634. Most of the Piscataway converted to Catholicism, and their tribal government agreed to a series of treaties with the Maryland colonial government.

Francis Gray of the Piscataway Conoy Tribe of Maryland gives a presentation at the Great Falls Tavern in the C&O National Historical Park.



PHOTO BY DEBBIE STEVENS

Pick Your Pit Stops in Celebration of 'Bike to Work Day' on Friday, May 17

Montgomery County will have 16 pit stops located throughout the County as it joins the annual nationwide celebration of "Bike to Work Day" on Friday, May 17. Commuter Connections and the Washington Area Bicyclist Association host the free event that offers the first 20,000 to register and participate a free T-shirt, refreshments and entry into a raffle for a new bicycle.

The national celebration of Bike to Work Day is held on the third Friday of May each year. This year's event will have a total of 115 pit stops throughout the Washington Metropolitan Region of Maryland, Washing-

ton, D.C., and Northern Virginia.

Montgomery County Department of Transportation (MCDOT) will host pit stops from 6:30 to 9 a.m. in:

- ❖ Downtown Bethesda
- ❖ Friendship Heights
- ❖ North Bethesda at Pike and Rose
- ❖ Rockville Falls Grove
- ❖ Rockville Town Center at Dawson's Market
- ❖ Silver Spring at Veterans Plaza

There will be raffles for prizes throughout the morning and a grand prize raffle of a new bike. DJs will provide entertainment and refreshments will be served at each of the stops hosted by MCDOT. Additional pit stops in the County will be located at the

National Institutes of Health (Building One); Naval Support Activity Bethesda; the Food and Drug Administration in White Oak; in Gaithersburg (Kentlands in the morning and Olde Town in the afternoon); Germantown; Rock Springs Business Park; Twinbrook; and Takoma Park (Downtown and at Sligo Creek Trail).

Most pit stops will be open during morning commuting hours, but the stop in Old Towne Gaithersburg will welcome bike commuters on their way home in the afternoon. Details on the specific location and operating hours of each pit stop in Montgomery County, and instructions on how to register for the event, can be found at <http://www.biketoworkmetrodc.org/>.

When participants register, they will be asked to choose one pit stop. At that stop, they will be able to pick up their free t-shirt. Participants are encouraged to visit more than one pit stop since each will have different activities. All stops will have food, drinks and raffles. Some will have speakers and entertainment.

Bike to Work Day is open to riders of all ability levels.

"It is a great opportunity for new riders to try bicycle commuting for the first time," said Al Roshdieh, director of Montgomery County's Department of Transportation. "There will be thousands of bicyclists who will be participating this year who have never commuted by bike before."

BULLETIN BOARD

Submit civic/community announcements at ConnectionNewspapers.com/Calendar. Photos and artwork welcome. Deadline is Thursday at noon, at least two weeks before event.

TRAINING SITES WANTED

Montgomery County's Opioid Response Program, which offers free Naloxone training for community members, is looking

for locations at which to hold trainings. Training sessions can be offered privately for an organization or can be made available to the general public. Training sessions teach participants how to recognize and respond to an overdose and free Naloxone kits are provided. Organizations interested in hosting a training should contact email Oarresponseprogram@montgomerycountymd.gov or call 240-777-1836. Visit www.montgomerycountymd.gov/

HHS/OpioidResources.html for a current schedule.

THROUGH MAY 23

Budget Forums. 7 p.m. Residents and groups are invited to provide input into the County's next six-year capital construction budget by attending public forums that will be held in April and May by local citizen advisory boards. The forums will help define construction and

planning priorities for the various regions in the County as officials develop the Fiscal Years 2021 to 2026 Capital Improvements Program (CIP) budget. Learn more at www.montgomerycountymd.gov/omb/openbudget.html and www.montgomerycountymd.gov/omb/publications.html

❖ **Mid-County** – Monday, May 20 at Mid-County Community Recreation Center, 2004 Queensguard Road, Silver Spring, 240-777-8101 or 240-

777-6820.

❖ **East County** – Thursday, May 23 at East Montgomery Regional Center, 3300 Briggs Chaney Road, Silver Spring, 240-777-8414.

THURSDAY/MAY 16

Cutting the Cord. 7-9 p.m. at the Potomac Community Center, 11315 Falls Road, Potomac.

SEE BULLETIN, PAGE 5

COMMUNITY

Potomac Community Village Take a Walk on the Wild (flower) Side

**Many flowers
about still along
the C&O Canal
towpath.**

BY PEGGY MCEWAN
THE ALMANAC

Starting off in a field of buttercups at Violette's Lock on the C&O Canal, Potomac Community Village members and guests began a two hour walk to see what was blooming along the way.

With the rain and early warmth this spring there were plenty of flowers for the group to see even though many could not identify what all they were seeing.

Potomac Community Village is a group of senior citizens from the Potomac area that "works to enhance the quality of life for all members of our community."

Our network of neighbors and friends offers assistance with practical needs so that people can stay in their Potomac-area homes as they age while enjoying stimulating activities and new connections," according to the group's website: potomaccommunityvillage.org.

Wednesday's wildflower walk was a great opportunity for seniors to get together, get out for a good walk and learn some new things.

Ginny Barnes, a founding member of Potomac Community Village and a member of the board, led the walk. She has a good knowledge of many of the flowers growing along the towpath that separates the canal from the Potomac River.

"I picked Violette's Lock because it has everything," Barnes said. "It's right on the river, it has a lot of plant diversity, a lot of tree diversity. It's a favorite for diversity and beauty."

Barnes steered the group downriver with the goal of making it to Block House Point, about a mile. A short walk was a wise decision as there were several stops along the way to look at and discuss the plants.

It didn't take long for the group to pause in search of the name of a small blue flower. Several walkers had wildflower books with them to look up identifications but there was no consensus on the flower in question. It had a face

somewhat like a Johnny-Jump-Up, but it was much smaller.

Barnes picked a fern-like leaf of Sweet Cicely and passed it around to the group to sniff and get the slight scent of anise.

She pointed out Bladdernut, Fleabane, Woodland Phlox, Wild Rose, Sensitive Fern and Mugwort among other flowering plants growing along the sides of the path.

Along the way Barnes told stories about the plants.

Mugwort, she noted, was often sewn into pillows.

"It has a wonderful smell. In folklore it is said to cause wonderful dreams," she said.

Cleves, a tall thin stem with slight green leaves with a stickiness to them, were used by the Colonists as a sieve, Barnes said.

"They made a mat of it and filtered milk through it," she said.

Such interesting stories that come along with a studied guide.

A Christmas Fern got its name because the leaves are shaped like a Christmas stocking. Among the medicinal plants Barnes pointed

Members of Potomac Community Village and guests gather at Violette's Lock on the C&O Canal for a wildflower walk led by member Ginny Barnes.



May Apples bloom under an umbrella of foliage along the C&O Canal.

out, was the Plantain, used as a poultice to relieve the pain of bug bites or bee stings. Wort, part of the name of many plants, it an Anglo-Saxon word meaning



PHOTOS BY PEGGY MCEWAN



"plant."

When the group reached Block House Point, a tall rock wall with outcroppings of greenery and along the bottom right, a riot of

Spiderwort with purple flowers, Barnes summed up the beauty with a quote from Yeats:

"...Obedient to some hidden magical breath."

POTOMAC ALMANAC

www.PotomacAlmanac.com

Newspaper of Potomac
A Connection Newspaper

An independent, locally owned weekly
newspaper delivered
to homes and businesses.

1606 King Street
Alexandria, Virginia 22314

Free digital edition delivered to
your email box. Go to
connectionnewspapers.com/subscribe

EDITOR & PUBLISHER

Mary Kimm
mkimm@connectionnewspapers.com
@MaryKimm

EDITORIAL

PHONE: 703-778-9415

E-MAIL:

almanac@connectionnewspapers.com

EDITOR

Steven Mauren, 703-778-9415
smauren@connectionnewspapers.com

PRODUCTION EDITOR

Jean Card
jcard@connectionnewspapers.com

CONTRIBUTING WRITERS

Susan Belford, Carole Dell,
Cissy Finley Grant, Carole Funger,
Colleen Healy, Kenny Lourie,
Peggy McEwan, Ken Moore

Contributing Photographers

Harvey Levine, Deborah Stevens

Art/Design:

Laurence Foong, John Heinly,
Ali Khaligh

Production Manager

Geovani Flores

ADVERTISING

For advertising information
sales@connectionnewspapers.com
703-778-9431

Display Advertising:

Kenny Lourie 301-325-1398
klourie@connectionnewspapers.com

Debbie Funk

National Sales & Real Estate
703-778-9444
debfunk@connectionnewspapers.com

David Griffin

Marketing Assistant
703-778-9431
dgriffin@connectionnewspapers.com

Jerry Vernon

Executive Vice President
703-549-0004
jvernon@connectionnewspapers.com

CIRCULATION

circulation@connectionnewspapers.com

**Potomac Almanac is published
by Local Media Connection LLC**

**Five Time First Place
Award-Winner
Public Service**
MDDC Press Association

**Four Time
Newspaper of the Year**
An Award-winning Newspaper
in Writing, Photography, Editing,
Graphics and Design

BULLETIN BOARD

FROM PAGE 3

Victor Rezmovic will discuss popular alternatives to Cable TV; how popular devices such as Apple TV and Roku are changing the viewing experience; and how devices such as smartphones, tablets and laptops have become the new TV sets. Potomac Community Village's meeting is free and open to all. Call 240-221-1370 or visit www.PotomacCommunityVillage.org for more.

SATURDAY/MAY 18

LGBTQIA Forum. 9 a.m.-noon at Thomas S. Wootton High School, 2100 Wootton Parkway, Rockville. Working to build, support and advocate for a stronger and more diverse LGBTQIA school community in partnership with MCCPTA, Montgomery County Public Schools and community organizations. Learn more at OW.LY/ZIIQ30OCAWA.

Educational Seminar: "How to Buy Remodeling." 10:30 a.m.-noon at Hopkins & Porter, 12944 Travilah Road, Suite 204, Potomac. This educational seminar was designed to help homeowners understand their options when it comes to remodeling. Bring all your questions. Hopkins & Porter architects, consultants, and remodeling experts will be available to help answer questions. Seating is limited. RSVP at 301-840-9121.

WEDNESDAY/MAY 29

"Public Safety Community Conversation." 7 p.m. at the Nancy Dacek North Potomac Community Recreation Center, 13850 Travilah Road, Rockville. Please join Montgomery County Council representatives for a "Public Safety Community Conversation." Discuss concerns. Visit www.montgomerycountymd.gov/Katz/ to register.

MONDAY/JUNE 10

Separation and Divorce: What Do I Need To Know? 7-8:30 p.m. at East County Community Recreation Center, 3310 Gateshead Manor Way, Silver Spring. Local attorneys walk through the "ins" and "outs" of going through a separation and divorce in Maryland. Learn about: methods of dispute resolution, when and where to file, types of divorce and grounds, financial statements, alimony, property and equitable distribution, role of the attorney, and domestic violence/orders of protection. \$5. Register at www.eventbrite.com/e/separation-and-divorce-what-do-i-need-to-know-tickets-54310289538.

TUESDAY/JUNE 11

Career Gateway Program. 9 a.m.-4 p.m. at JCA Headquarters, 12320 Parklawn Drive, Rockville. Jewish Council for the Aging's Career Gateway Program can help those 50 and older hone their resume, polish networking and interviewing skills, use Internet job search resources more effectively, and turn age and experience into an advantage. Each session of the Career Gateway features 30 hours of small-group classroom instruction over five days (Session VI - June 11, 12, 14, 17 and 19), comprehensive take-home materials, practical exercises, and a long-term mentor. \$75. Contact Jodie Rasch at 301-255-4215 or email jodie.rasch@accessjca.org.

SATURDAY/JUNE 15

Caregiver Support Program. 10 a.m.- 4 p.m. at the Silver Spring Civic Building, downtown Silver Spring. Montgomery County's Caregiver Support Program is hosting interactive sessions designed for family/friend unpaid caregivers. Attend and learn how to maintain well-being through support, community connections and education programs. Free. Register at www.eventbrite.com/e/care-for-the-caregiver-event-registration-57422198341.

CRISIS PREVENTION SERVICES

EveryMind Crisis Prevention and Intervention specialists are available by phone, text and chat every hour of every day. The community can also look to EveryMind for mental health professionals who are prepared to talk about warning signs and ways anyone can help to prevent suicide from ending lives far too soon. EveryMind is an independent 501(c)3 nonprofit organization. Visit Every-Mind.org. More resources include:

- ❖ Call or Text Montgomery County Hotline: 301-738-2255
- ❖ Chat: Crisis Prevention Chat: <https://suicidepreventionlifeline.org/chat/>

- ❖ Call: National Suicide Prevention Lifeline: 1-800-273-8255
- ❖ www.every-mind.org/services/crisis/
- ❖ www.every-mind.org/wp-content/uploads/2017/12/Talking-to-Kids-about-Suicide.pdf
- ❖ suicidepreventionlifeline.org
- ❖ www.suicidology.org

SUPPORT GROUPS

Cancer Support Groups. Held at Hope Connections for Cancer Support, Beaumont House at FASEB, 9650 Rockville Pike, Bethesda. Free. Weekly support groups for people with all types of cancer, caregivers, people with advanced cancer and a bereavement group. An ovarian/gyn support group and group for young adults with cancer are offered twice a month, as are monthly groups for people with breast cancer, bladder cancer, blood cancers, and gastro-intestinal cancers. Orientation sessions are held every Monday at 11 a.m. and the second and fourth Thursday of each month at 6 p.m. in Bethesda. RSVP at 301-634-7500 or info@hopeconnectionsforcancer.org.

The Alzheimer's Association's Memory Cafes offer a fun and relaxed way for people living with early-stage memory loss to get connected with one another through social events that promote interaction and companionship. The memory cafe in Rockville (4860 Boiling Brook Parkway) operates the third Wednesday of each month from 2:30-4 p.m. Pre-registration is required. Contact Lindsey Vajpeyi at 240-428-1342 or lvajpeyi@alz.org.

Suicide Grief Support Group. At JSSA, 6123 Montrose Road, Rockville. This ongoing bereavement support group is for those who have lost a loved one to suicide. This group meets every first and third Monday. No charge. Pre-registration is required to attend. Call 301-816-2708.

Because I Love You is a nonprofit organization dedicated to supporting parents of troubled children of any age. The group helps parents deal with drugs, runaways, truancy, verbal abuse, physical abuse, curfew violations and other misbehavior, as well as help parents deal with themselves, to manage and live their own lives without obsessing over their child's behavior. The group meets 7:30-9:30 every Thursday at Bethesda United Methodist Church Room 209, 8300 Old Georgetown Road, Bethesda. Visit www.becauseiloveyou.org, email hbrtel1@netzero.com or call 301-530-3597.

Adult Bereavement Groups. Dates and times vary depending on group members. Hospice Care, 518 S. Fredrick Ave., Gaithersburg. Peer driven support groups in those in need of support. Free. Contact Penny Gladhill at 301-990-8904, or Pennyg@hospicecaring.org.

ONGOING

Potomac Rotary Gatherings. 7:15-8:30 a.m. at Founding Farmers MoCo, 12505 Park Potomac Ave., Potomac. Rotary Club of Potomac meets for breakfast first and third Wednesday of each month and a Happy Hour at Sugo Pizzeria, 5-7 p.m., on the last Wednesday. Learn how to serve humanity globally. Individuals pay for their own breakfast. No admission fee. Visit www.PotomacRotary.org for more.

24/7 Homeless Information Line. Montgomery County's Department of Health and Human Services, in partnership with EveryMind, has launched a 24/7 Homeless Information Line, with trained specialists to provide information on County homeless services and shelter resources. Callers can also provide information about the location of individuals in the community experiencing homelessness. The reports will be forwarded to community outreach partners who will attempt to locate the individual and offer support and resources. The information line number is 240-907-2688. Visit www.montgomerycountymd.gov/homelessness for more.

Senior SmarTrip Card. There is a SmarTrip card, for those 65 and older, that may be used to ride Metrorail at senior fares, ride free on Ride On buses and some Metrobuses in Montgomery County Monday-Friday, 9:30 a.m.-3 p.m. and Saturday, 8:30 a.m.- 4 p.m. or half fare at all other times. The cost of the Senior SmarTrip card is \$2. There is no value on the card at the time of purchase. Visit any library in Montgomery County, the Silver Spring TRiPS Store, the Mobile Commuter Store, or the Montgomery County Treasury Office and bring

RARE OPPORTUNITY!

Equestrian Estate with 6 Stall Barn, Pond & Full-Size Riding Arena!
5 BR/3 Full BA/3 Half BA on 8+ Acres just 4 miles from the Village.
Call Carolyn to Learn More or to Schedule a Private Showing!



5 BEALL SPRING COURT • POTOMAC, MD 20854



CAROLYN SAPPENFIELD • 240.353.7601

Carolyn@CarolynHomes.com

RE/MAX Realty Services • Bethesda Row
301.652.0400



Take a
Tour
Hosted by
Arden Courts

Join us to take a peek
inside Arden Courts!

Call today to arrange your
personal tour and receive a free
copy of *Untangling Alzheimer's*
by Dr. Tam Cummings.

At Arden Courts we offer:

- 100% dedicated memory care
- Safe, secure indoor/outdoor walking paths
- Nursing services onsite
- Nearly 25 years of dementia caregiving experience

Potomac@arden-courts.com
arden-courts.com/Potomac



© 2019 MCH Healthcare, LLC



For additional information
or tour, contact:

Arden Courts of Potomac
10718 Potomac Tennis Lane
Potomac, MD 20854
301.983.3620



Arden Courts
Memory Care Community

SEE BULLETIN, PAGE 11

OBITUARY

Peter Kimm, 89, Leader in Affordable Housing in Developing World

Peter Melia Kimm, whose innovative work on affordable housing in the developing world continues to have an impact, died peacefully at home in Potomac, Md. on Saturday, March 30. He was 89.

He began his 30 year career guiding the U.S. Agency for International Development Office of Housing and Urban Development in 1966. His relentless pursuit of mission revolutionized the construction of sustainable housing for poor urban families in the developing world.

The USAID Alumni Association referred to him as “an agency legend.” Peter Kimm built a group of professionals with remarkable camaraderie dedicated to their mission.

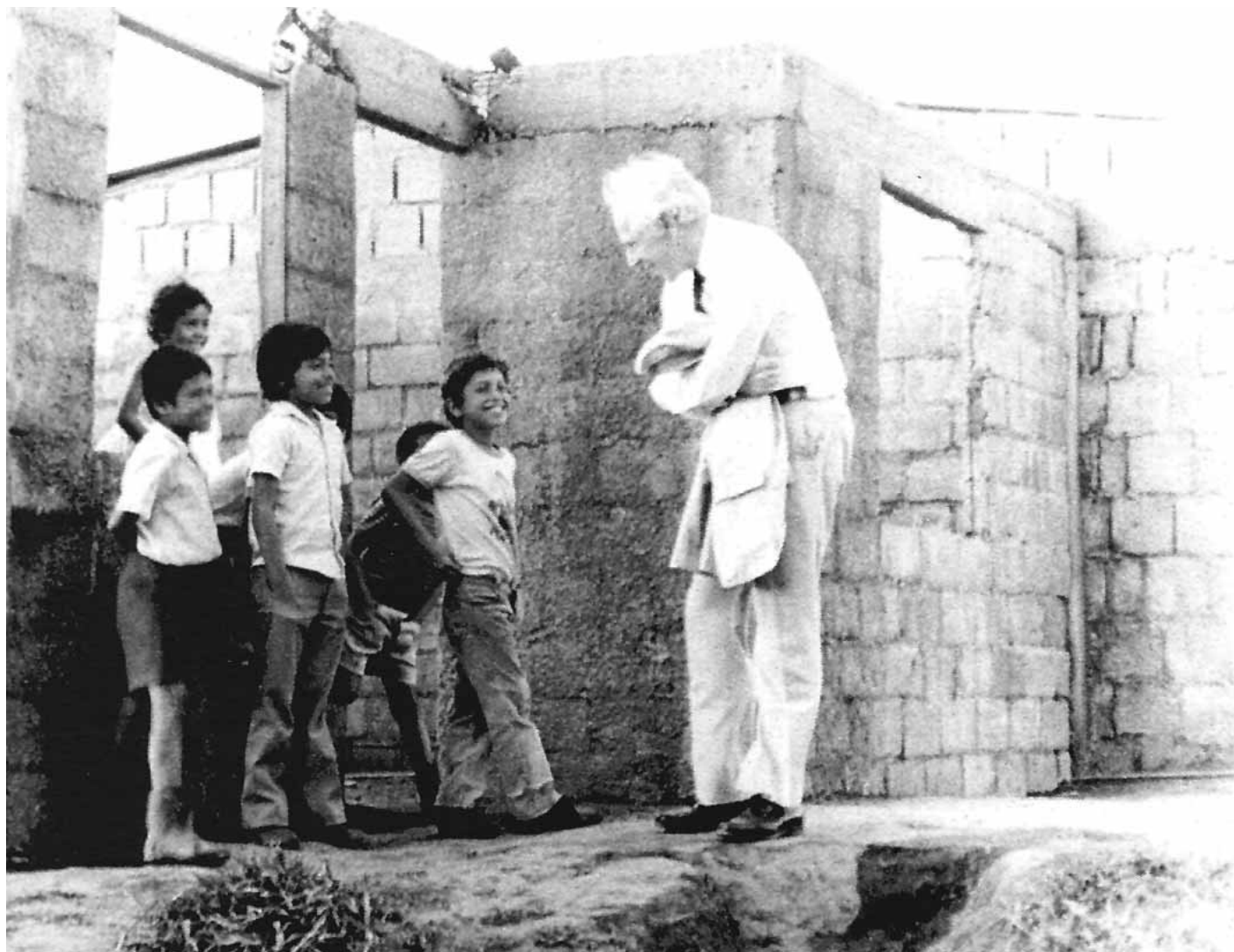
“Peter was well loved and respected as a leader, mentor and pioneer,” said Chris Milligan, Counselor to Agency for International Development. “In addition to helping millions of families around the world realize more affordable housing, he mentored and guided countless people within USAID ... with his dedication and forward thinking. Throughout the years, USAID staff members have felt an enormous privilege to have worked with Peter.”

“He blazed the Agency’s path in housing and urban development. He built and championed the innovative housing guaranty program that leveraged U.S. private-sector resources to fund houses and services to help the world’s urban poor,” Milligan said.

“Peter’s Housing Investment Guarantee program had such an impact because Peter insisted that the program help poorer people,” said Peter McPherson, Administrator of the U.S. Agency for International Development from 1981-87. “The streets and plots had to be well laid out with clear title for the new owners. The plots usually had no more than the basic house frame and utility connections, and the new owners gladly finished the work themselves. Peter always focused on holding down the purchase price for the new owners.

“Because Peter had the guarantee/money, he could be a hard negotiator with the host government which sometimes wanted to build fully constructed middle-class housing,” McPherson said. “Peter’s work continues to inform us all.”

Over the 40-year life of the Housing program (1963-2002) more than 200 loan guaranties totaling \$3.1 billion were issued, providing direct benefit to more than 30 million low-income individuals in 48 countries. The loans from U.S. financial institutions created the incentive for sweeping policy changes in many countries, leading to the creation of important public and



Peter Kimm on a housing site visiting with children.



Peter Kimm

private institutions, and improved access to finance and municipal services.

Peter Kimm defined his program as one whose real purpose was to help developing countries solve their own shelter problems. “We do this through financial and techni-

cal assistance. ... We hope to set in place systems that will solve the housing problem.”

Governments in developing nations can’t afford to build enough of the right kind of housing to provide shelter to most people who need it, Kimm said. “The approach that we’re talking about now is that the individual initiative, the initiative of families primarily, and the initiative of the private sector, that is builders, developers, and lenders, will solve the housing problem IF the governments create the framework.”

In 1981, President Ronald Reagan recognized Peter with the Presidential Rank of Distinguished Executive Award, the most prestigious recognition that can be given to a member of the U.S. Senior Executive Service. He was the first from USAID to receive the award.

In June 1996 at U.N. Conference Habitat II in Istanbul, Assistant Secretary General Wally N’Dow praised Kimm for contributing “more over the past 30 years towards the housing needs of poor people than anyone else in the world.”

In October 1996 at United Nations Headquarters in New York, Peter Kimm received

SEE PETER KIMM, PAGE 7

About My Father

Written the day of my father’s death.

My father Peter Kimm died peacefully at home Saturday morning, March 30, 2019, a few minutes after 7am. My brother and I (and others) had special time with him on the day before. He was 89.

My mother Grace was with him when he died, and continuously before, not leaving his side for weeks in the hospital or the time at home. The doctor said she was the most devoted family member he had seen.

My parents celebrated their 65th wedding anniversary in January.

My father was a remarkable human being and I can’t begin to touch all the ways he made the world a better place.

He launched our family and his brother’s family (including four children under seven) on an odyssey of public service — first to Patterson, NJ and then to Cuernavaca, Mexico, en

SEE ABOUT MY FATHER, PAGE 7

Decrease in Residents Experiencing Homelessness

The overall number of persons experiencing homelessness in Montgomery County decreased by 23 percent according to data collected from the 2019 Point in Time Survey.

Data from Montgomery County is part of a regional analysis and report by the Metropolitan Washington Council of Governments. Concerned by the lack of regional data available, COG undertook the first effort to produce a Point in Time count of homeless adults and children in metropolitan Washington in 2001. Read COG's report at www.mwcog.org/homelessnessreport.

The survey was conducted on Jan. 23, 2019. On the night of the count, there were 647 persons who were homeless in Montgomery County, as compared with 840 persons counted in 2018. Since 2017, there has been a 28 percent decrease in the overall number of homeless individuals. This is the most significant decrease in any two-year period since 2009.

"We have worked hard as a community to quickly move people experiencing homelessness into permanent housing while offering support services to keep them housed and our efforts are paying off," said County Executive Marc Elrich. "Our 'Inside Not Outside' effort to permanently house every chronically homeless individual con-

tinues and we have housed more than 400 individuals since our efforts began. We are now focusing on housing families with children and youth and will continue those efforts. The partnership between our County programs and nonprofit partners who work every day of the year to end homelessness is a statement of the values we hold as a community."

The number of persons experiencing chronic homelessness has decreased by 93 percent from 2017 to 2019. The continued decline in homelessness can be attributed to the reallocation and investment of funding towards permanent housing to end chronic homelessness.

Providers have removed barriers to housing, enhanced outreach and created a list to identify, track and follow those identified as chronically homeless or at risk of chronic homelessness.

As of April 26, 413 chronically homeless individuals have been placed in permanent housing.

Since 2017, there has been a 73 percent decrease in those reporting substance abuse. There were 28 adults reporting chronic substance use in 2019 compared with 66 reporting that in 2018. Households without children experienced a 22 percent decrease in 2019 from 568 in 2018 to 441 in 2019. The number reporting a chronic health condition decreased by 48 percent

from 144 in 2017 to 84 in 2019. There were 61 families with children in 2019, compared with 86 in 2018.

"The partnership between nonprofit providers, our Department of Health and Human Services, and key community stakeholders is making a difference," said Councilmember Gabe Albornoz. "As chair of the Health and Human Services committee, I will make it my mission to continue to remove barriers and provide accessibility for those who are in need of a place to live. When someone secures permanent housing, we all win as a community."

"On a cold January night, I participated in the Point in Time count and was encouraged to see for myself the decrease of individuals experiencing homelessness," said Councilmember Evan Glass, the Council's lead on Homelessness and Vulnerable Communities and a member of the Interagency Commission on Homelessness. "We've made tremendous progress in providing safe shelters for individuals at risk of becoming homeless while also partnering with our nonprofit community to find permanent supportive housing for those who are ready. I am proud of the dedication and coordination among all stakeholders; an effort that will be needed as we continue working to eradicate homelessness in Montgomery County."

Though Montgomery County achieved

the goal of ending veteran homelessness in December 2015, sustaining functional zero requires continual monitoring and commitment of resources. During the 2019 count, 13 homeless veterans were counted, the same number as the 2018 count. As of April 12, four of the veterans have been housed and six are approved for housing.

The County's Homeless Continuum of Care (CoC) is a public-private partnership that includes state and local government agencies, nonprofit service providers, landlords and other stakeholders who have a role in preventing and ending homelessness. Led by the County's Department of Health and Human Services, the CoC works to provide a continuum of housing services to individuals and families, including outreach and engagement, emergency and transitional shelter, rapid re-housing and permanent supportive housing. Case management is provided with an emphasis on removing housing barriers and connecting people with housing, employment, disability entitlements and other mainstream services. The continuum also utilizes a range of prevention initiatives, including emergency financial assistance, rent subsidies and energy assistance to prevent the loss of permanent housing.

For more information on the County's services, visit montgomerycountymd.gov/homelessness.

Peter Kimm

FROM PAGE 6

the HABITAT Scroll of Honor Award, for 30 years of "outstanding service assisting developing nations worldwide respond to housing needs of low-income families and to meet the challenges of rapid urbanization," recognizing his work in Latin America, Africa, Asia and Eastern Europe.

Peter Kimm received The Cooper Union Gano Dunn Award in 1985 for outstanding public service, and the President's Citation in 1998 for contributions to his profession. He was one of the 150 alumni chosen for the Hall of Fame at the 150th anniversary of the Cooper Union in 2009.

PETER KIMM was born in Brooklyn, NY on Dec. 15, 1929.

He served in the U.S. Army during the Korean War, 1951-1953, rising to the rank of Master Sergeant during his deployment in Korea. He led a combat construction platoon, receiving multiple awards. He was on the troop ship coming home when the truce was finally signed.

He married Grace Anderson in 1954 and they settled in their native Brooklyn. Peter began a rigorous course of study at The Cooper Union in New York City at night while working construction during the day. He received his Bachelor of Civil Engineering degree in 1958, and became a Licensed Professional Engineer. He then supervised construction of buildings, roads and highway bridges.

About My Father

FROM PAGE 6

gaging with Ivan Illich, Margaret Mead, the Berrigan brothers and others, and learning Spanish along the way.

My father went on to pioneer sustainable systems to finance and build affordable housing in underdeveloped countries around the world working with Agency for International Development.

He and my mother were on the National Mall to hear Martin Luther King Jr. give his "I have a dream" speech. They were hands-on for the Poor People's Campaign. All the while my mother worked for peace.

When I meet people who worked with him, they always convey that he was a role model, an inspirational man to work with.

Things my father taught me by ex-

ample and explicitly: Make a difference. Do something that matters. Do it with passion. Know no fear. If you haven't made anyone angry lately, you probably aren't doing anything important. Excuses don't matter. Results matter. And so much more ... (I'm not saying how successfully I learned these lessons.)

Despite the difference he made in the wider world, Peter Kimm's most important role was quite possibly as Papa, with 10 grandchildren and 3 great grandchildren. We will all miss him so much.

Montgomery Hospice and their nurses provided amazing support making it possible for my father to be at home. It gave all of us some peace and connection that was just not possible in the hospital.

— MARY KIMM

In 1961, in response to President John F. Kennedy's call to "ask what you can do for your country," he and his brother launched their families (including four children under seven) on an odyssey of public service — first with a Peace Corps-type organization to Paterson, NJ and Seton Hall University, and then to Cuernavaca, Mexico and learned Spanish. They engaged with Ivan Illich, Margaret Mead, Philip and Daniel

Berrigan, and others, with a volunteer organization in US & Mexico.

Kimm first worked in Washington, DC for the American Institute for Free Labor Development, AIFLD, 1963-65, supporting Trade Unions' worker housing in Latin America. He joined USAID in 1966.

After USAID Housing Guaranty Program, Peter Kimm went on to be Director for the USAID Environmental Center (1993-97)

and Director of the USAID US-Asia Environmental Partnership (1998-2002).

After he retired from USAID In 2002, he later founded the International Housing Coalition in Washington, D.C., and served on its board.

Peter Kimm was devoted to his grandchildren, especially after the death of his oldest son Peter Jr. in a car accident in 1995. He attended sports practices and games of children and grandchildren, sometimes coaching from youth soccer to high school lacrosse, basketball, and football.

Peter and Grace Kimm's children and grandchildren all live nearby. Holidays and the many birthdays bring the family together often.

A lifelong athlete, he enjoyed basketball, tennis and cycling, forming close friendships with those he played with.

He was part of a group of retired friends that bicycled weekly together for more than a decade, engaging in lively political conversation during breaks. This later evolved into a "New Yorker" reading group, meeting monthly.

Peter Kimm is survived by his wife of 65 years, Grace Kimm; his son Christopher Kimm of Reston, SVP of Equinix; daughter Mary Kimm of Potomac, Publisher of Connection Newspapers; daughter-in-law Virginia Fowler of Potomac; brother, Victor Kimm of McLean; and their families, including 10 grandchildren and three great-grandchildren.

CALENDAR

Submit entertainment announcements at www.connectionnewspapers.com/Calendar/.
The deadline is noon on Friday. Photos/artwork encouraged.

ONGOING

Art Exhibit: Birth of a Star. Through May 19 at VisArts, Gibbs Street Gallery, 155 Gibbs St., Rockville. Birth of a Star is a series of four sculptures depicting different stages of a star's life: Protostar, Red Giant, Supernova and Black Hole. These works combine carpentry and playful materiality with hand-drawn animations that are incorporated into each sculpture using screens and projection. Visit www.visartscenter.org for more.

Art Exhibit: John Schlesinger. Through May 19 in the Common Ground Gallery, VisArts Center, 155 Gibbs St., Rockville. John Schlesinger presents a site-responsive sculpture rooted in the ceiling and walls of the gallery made from locally-sourced demolition rebar, bent neon, and resin-soaked photographs representing waste from the local area. Visit www.visartscenter.org for more.

Art Exhibition: "Color in May." Through May 25, Wednesday-Saturday, noon-6 p.m. at Gallery B, 7700 Wisconsin Ave., Suite E, Bethesda. Bethesda-based painter Catherine Levinson has embraced her passion for art since attending the High School of Music and Art in New York City. She majored in art at City College in New York, eventually becoming a high school art teacher. In addition to teaching art, Catherine worked most of her career as a clinical social worker and psychotherapist, incorporating art into her practice, extensively relying on her artistic training as she worked with young children. Visit www.bethesda.org.

Art Exhibit: Here and Where. Through May 26 in the Kaplan Gallery, VisArts Center, 155 Gibbs St., Rockville. Richard L. Dana presents an optically explosive solo exhibition featuring recent digital prints that occupy the gallery in a variety of scales and configurations. Visit www.visartscenter.org for more.

Photography Exhibit: "Human Landscapes." Through May 26, gallery hours at Photoworks, Glen Echo Park. Photoworks presents Human Landscapes featuring work by Alan Awakim, Hannah Fox, and David Pellegrini. Curated by Fabian Concalves Borrega, Human Landscapes is the conjunction of three photographic series that propose a dialogue between the subject and the objects with which they are surrounded. Visit www.glenechophotoworks.org for more.

Teen Writers' Club. Tuesdays through May 28, 6:30-8 p.m. at Potomac Library, 10101 Glenolden Drive, Potomac. Teens (13-18) with a passion for writing are invited to join the Teen Writers' Club. Learn and practice new writing techniques, share your work, and learn how to critique other works with author Neal Gillen. Free. Email acsagillen@aol.com for more.

Art Exhibit: "Dialogues." Through June 8, gallery hours at Waverly Street Gallery, 4600 East West Highway, Bethesda. In his new exhibit, Cristian Ianculescu explores space as a medium for communication. His works use distance, posture, and rhythm to create volumes which facilitate or inhibit interactions. The intimate scale of the work allows the viewer to exercise the freedom of an outside observer, and maintain a god-like detachment. Visit www.waverlystreetgallery.com for more.

THURSDAY/MAY 16

Family Storytime. 10:30 a.m. at Potomac Library, 10101 Glenolden Drive, Potomac. These 25-30 minute



Greatest Hits

Six Degree Singers performs their Greatest Hits, a program featuring favorite choral numbers from the choir's 10-year history, including contemporary, renaissance, world, folk, and jazz songs. In 2009, artistic director Dr. Rachel Carlson wanted something to fill a gap she saw in the community: A choir for young professionals, everyday people from a variety of musical and non-musical backgrounds, who wanted to keep the making of music an active part of their lives. Neither professional nor amateur, this group would serve as a warm inclusive community, and still have a strong musical discipline. Saturday, June 1, 7:30 p.m. at Bradley Hills Presbyterian Church, 6601 Bradley Blvd., Bethesda. \$12-\$20. Visit www.singsix.com/store/greatest-hits for tickets.

programs are designed for children of all ages. Filled with diverse stories and activities that promote and develop language skills and imagination. These programs encourage children to develop a lifelong love of reading and learning, and introduce them to the culture of reading. All ages. Call 240-777-0690 or visit montgomerycountymd.gov/library/branches/potomac.html for more.

Meet a Live Kangaroo/Wallaby. 11 a.m. at Potomac Library, 10101 Glenolden Drive, Potomac. Learn all about what they eat and where and how they live with Roos2U. Sponsored by the Friends of the Library, Potomac Chapter. Free. Call 240-777-0690 for more.

FRIDAY/MAY 17

Bike to Work Day 2019. Pit stop times vary, all over the region. Join more than 20,000 area commuters for a free celebration of bicycling as a fun, healthy and environmentally-friendly way to get to work. There are 115 Bike to Work Day pit stops to choose from. The first 20,000 to register and attend will receive a free Bike to Work Day T-shirt, enjoy refreshments and chances to win prizes. Visit www.biketoworkmetrodc.org.

Summer Enrollment Night. 6-8 p.m. at My Gym Potomac, 11325 Seven Locks Road, Potomac. Learn all about summer classes and camp, meet our teachers, play fitness games, practice gymnastics, and receive summer discounts. Free. Call 301-983-5300 or visit www.mygym.com/potomac/articles/10518.

SATURDAY/MAY 18

Gaithersburg Book Festival. 10 a.m.-6 p.m. on the grounds of City Hall, 31 S. Summit Ave., Gaithersburg. The Gaithersburg Book Festival is a celebration of the written word and its power to enrich the human experience with a mission to foster an interest in reading, writing and literary conversation. The Festival attracts award-winning and best-selling authors, poets and songwriters from across the country to its park-like setting in the heart of Olde Towne Gaithersburg. Free to attend; open to everyone. Visit www.gaithersburgbookfestival.org.

Potomac Conversation Club. 11

a.m. at Potomac Library, 10101 Glenolden Drive, Potomac. Practice English conversation in a friendly and relaxed setting. New members are always welcome. Adults, seniors. No registration; join any time. Call 240-777-0690 or visit montgomerycountymd.gov/library/branches/potomac.html for more.

Live Comedy. 8 p.m. at Silver Spring Black Box, 8641 Colesville Road, Silver Spring. Come for the sweetness, sass and swagger as Improbably Comedy celebrates women with this all ladies line-up: Chanel Ali, Eryca Nolan, Michele Sometimes, Yasmin Elhady and Abby Mello. Special giveaways and beer served by Denizens. \$20 early; \$25 general admission; \$32 VIP. A limited number of free community tickets are available. Visit www.improbablecomedy.com.

SUNDAY/MAY 19

Potomac Hunt Races. Gates open at 10 a.m.; activities start at noon; race course closes at 7 p.m. at the Kiplinger estate in Poolesville. The Potomac Hunt Races is an annual tradition, celebrating the sport of steeplechase racing. Race day festivities include a car display, mounted police demonstrations, The RBC Kid Zone, and Vendor Village. All on-site parking must be purchased in advance. Visit www.potomachuntraces.com.

Multimedia Installation Practices with John Schlesinger. 1-4 p.m. at VisArts Center, 155 Gibbs St., Rockville. Join artist John Schlesinger and explore his installation at VisArts' Common Ground Gallery. Participants may bring a piece of their own work and collaborate with John to modify and remake his installation. For those curious about installations, this is an opportunity to work inside one; try different strategies and collaborate freely without any risk. Visit www.visartscenter.org for more.

MONDAY/MAY 20

Off The Hook Stitching Club. 4:30 p.m. at Potomac Library, 10101 Glenolden Drive, Potomac. Crocheting and knitting are both great ways to relax and spend time. Join other stitchers and share ideas while working on a project of one's

own (bring tools and supplies). For ages 8 and up. All skill levels welcome. Meets once a month. No registration required. This program is sponsored by the Friends of the Library-Potomac Chapter. Call 240-777-0690 or visit montgomerycountymd.gov/library/branches/potomac.html for more.

Sourcing Native Plants. 7:30 p.m. at Brookside Gardens, Visitors Center/Education Building, 1800 Glenallan Avenue, Wheaton. Amanda McClean and Claudio Vazquez, co-owners Izel Plants (www.izelplants.com/) will discuss how to find native plants that are truly "native" to our region. Stay for refreshments, provided by club members, after the talk. Free and open to the public. No RSVP required. SSGC dues are \$10 per year for individual or \$15 for a couple/household membership. Learn more about the club at groups.yahoo.com/neo/groups/SilverSpringGardenClub/info.

TUESDAY/MAY 21

Read To A Dog. 4:30 p.m. at Potomac Library, 10101 Glenolden Drive, Potomac. School-age children, especially beginners learning to read and those who want to improve their confidence in reading skills, are invited to practice reading aloud in short (10-15 minute) semi-private sessions with a certified therapy dog. Sign up begins 15 minutes before program. First-come, first-served. Call 240-777-0690 or visit montgomerycountymd.gov/library/branches/potomac.html for more.

Anniversary Commemoration. 5 p.m. on Memorial Plaza, located between the County Executive Office Building at 101 Monroe St. and the Circuit Court Annex in Rockville. Commemoration of the one-year anniversary of the dedication of the Montgomery County Vietnam Veterans Memorial Wall. At 5 p.m., four Vietnam veterans will be presented with "Quilts of Valor" from Sue Moats of Capital Cares Quilts of Valor. At 6 p.m., ceremonies will include recognition of attending families of veterans killed in the war. The ceremonies will conclude with the names of the 130 veterans whose names are on the wall will be read on the plaza. Four Montgomery County residents remain missing. Starting at 7 p.m., dinner will be provided by Mission BBQ in the Executive Office

Building cafeteria, which is adjacent to Memorial Plaza. Visit www.montgomerycountymd.gov/HHS-Program/ADS/CVA/CVAIndex.html.

THURSDAY/MAY 23

Bells Mill Elementary 50th Anniversary and Reunion. Celebrate with an open house and planned student performances. Several food trucks will be there for the evening and all are welcome to come and have their supper on the lawn and visit through the building seeing memorabilia, listen to children performing and take part in a school wide art project that will be hung as a permanent part of the building. Share memories, photos and other memorabilia or speak with current students.

❖ Families, students and alumni may share their fondest memory in an electronic form and email to Robert_D_Hirsch@mcpsmd.org.

❖ Bells Mill related pictures from the past, can be scanned (identify the year/decade and give a description) and emailed to Jerri_L_Oglesby@mcpsmd.org or Rose_M_McKee@mcpsmd.org.

❖ T-shirts, mugs, yearbooks, and other memorabilia that can be displayed, can be labeled and dropped off at the main office. Great care will be taken and items will be returned as soon as the program ends on May 23.

❖ To participate in speaking with current students or speaking at the kick-off pep rally on May 17, email Tracy_S_Tabachow@mcpsmd.org.

Equipment Show. 10:30 a.m.-4:30 p.m. at Mattie J. T. Stepanek Park, 1800 Piccard Drive, Rockville. Kids – and kids at heart – will be able to climb into the operator's seat of some of the big trucks used by the city's Department of Public Works. The free show includes public works displays, demonstrations, balloons, popcorn, coloring books and other giveaways, and the chance to meet some of the public works employees who provide the important services that keep Rockville running. Visit www.rockvillemd.gov/publicworks or call 240-314-8500.

Bernie Scholarship Awards. 5:30-7:30 p.m. at Executive Office Building, 101 Monroe St., 1st floor, Rockville. A dinner to recognize 51 Montgomery County students with scholarships and present the Community Leadership Award to Chris Ullman, Founder and President of Ullman Communications. Visit www.berniescholarships.org.

FRIDAY/MAY 24

"My Favorite Things." 7-8:30 p.m. at Geneva Presbyterian Church, 11931 Seven Locks Road, Potomac. The Sanctuary and Handbell Choirs will be performing their all-time favorite songs. There will be a wine and cheese reception following the concert. Free. Call 301-424-4347 or visit www.genevapotmac.org.

SATURDAY/MAY 25

Potomac Conversation Club. 11 a.m. at Potomac Library, 10101 Glenolden Drive, Potomac. Practice English conversation in a friendly and relaxed setting. New members are always welcome. Adults, seniors. No registration; join any time. Call 240-777-0690 or visit montgomerycountymd.gov/library/branches/potomac.html for more.

SATURDAY-SUNDAY/MAY 25-26

Spring in the Park. 9 a.m.-4:30 p.m. at Great Falls Tavern Visitor Center, 11710 MacArthur Blvd., Potomac. Outdoor activities include Leave No Trace Workshops and dog friendly Bark Ranger programs. Music by the

CALENDAR

National Capital Chapter of the Music Box Society International (Sunday only). The programs at Great Falls Tavern are free, but there is an entrance fee to the park of \$15 per single vehicle (subject to change). Call 301-767-3714 for more.

SATURDAY-MONDAY/MAY 25-27

Hometown Holidays: Memorial Day Weekend. More than 25 regional and national performing artists return to Rockville Town Center this Memorial Day weekend, along with the best of local food, for the Hometown Holidays Music Fest. The 31st annual free festival will feature four stages of entertainment, the Taste of Rockville, "the beach" sand pile and activities for kids, from noon-8 p.m. Saturday, May 25 and Sunday, May 26. The city's 75th annual Memorial Day Ceremony and Parade will take place from 9 a.m.-1 p.m. Monday, May 27, in Town Center. Find the full schedule at www.rockvillemd.gov/HTH.

SUNDAY/MAY 26

Organ Grinder Performance. 11 a.m.-3 p.m. at C & O Canal National Park, 11710 MacArthur Blvd., Potomac. Enjoy the 23rd annual performance by street organ grinders. Demonstrations of antique music boxes and other mechanical music devices sponsored by the National Capital Chapter of the Musical Box Society International. Free. There is a National Park Service \$15 per car park entrance fee. Email ncmbisi@gmail.com for more.

Waltz Dance. 3:30-6 p.m. at the Spanish Ballroom at Glen Echo Park, 7300 MacArthur Blvd., Glen Echo. Introductory Waltz Workshop from 2:45-3:30 p.m. Featuring the ensemble Swallowtail, who will provide a lively mix of folk waltzes with a few other couple dances, including Hambo, Schottische, Swing, Tango, and Polka. Admission is \$13, \$5 for full-time students with student ID. No partner required. Call Joan Koury at 202-238-0230 or Glen Echo Park at 301-634-2222, or visit www.WaltzTimeDances.org.

TUESDAY/MAY 28

Teen Writers' Club. 6:30 p.m. at Potomac Library, 10101 Glenolden Drive, Potomac. Teens ages 13-18 with a passion for writing are invited to join the Teen Writers' Club. Learn new writing techniques, get practice in different writing exercises, share work, and learn how to critique the work of others. Author Neal Gillen leads the club, which meets on the 2nd and 4th Tuesday of each month. Made possible through the collaboration and support of the Maryland Writers' Association. Call

240-777-0690 or visit montgomerycountymd.gov/library/branches/potomac.html for more.

THURSDAY/MAY 30

Appetizers and Art. 5:30-8 p.m. Meet at Denizens Brewing Co., 1115 East West Highway, Silver Spring. Learn about Silver Spring's public art with free artwork tours on select Thursday evenings during spring and summer 2019. Montgomery Planning will provide appetizers for attendees. Drinks and main entrees are available for individual purchase. The art walk is free; however, registration is limited. Visit www.silverspringdowntown.com/art-walk-tour to sign up.

SATURDAY/JUNE 1

Children and the Arts. 10 a.m.-3 p.m. in downtown Bethesda. The 25th annual Imagination Bethesda, a children's street festival celebrating children and the arts, with musical performances and professional children's entertainers lighting up the stage, while hands-on art and craft activities will line the streets along Elm Street and Woodmont Avenue in downtown Bethesda. Additionally, the festival will feature face painters, balloonists, free giveaways and more. Free admission. Rain or shine. Call 301-215-6660 or visit www.bethesda.org.

Potomac Chinese Book

Discussion. 10:15 a.m. at Potomac Library, 10101 Glenolden Drive, Potomac. Chinese book discussion in Chinese language. Memory is a Faint Pain by Long Yingtai. Ask for the book at the Circulation Desk. Free. 90 minutes. Adults, seniors. No registration. Call 240-777-0690 or visit montgomerycountymd.gov/library/branches/potomac.html for more.

Potomac Conversation Club. 11 a.m. at Potomac Library, 10101 Glenolden Drive, Potomac. Practice English conversation in a friendly and relaxed setting. New members are always welcome. Adults, seniors. No registration; join any time. Call 240-777-0690 or visit montgomerycountymd.gov/library/branches/potomac.html for more.

Meet the Artist: "Dialogues." 3 p.m. at Waverly Street Gallery, 4600 East West Highway, Bethesda. In his new exhibit, Cristian Ianculescu explores space as a medium for communication. His works use distance, posture, and rhythm to create volumes which facilitate or inhibit interactions. The intimate scale of the work allows the viewer to exercise the freedom of an outside observer, and maintain a god-like detachment. Visit www.waverlystreetgallery.com for more.

Greatest Hits. 7:30 p.m. at Bradley Hills Presbyterian Church, 6601 Bradley Blvd., Bethesda. Six Degree Singers performs their Greatest Hits, a program featuring favorite choral numbers from the choir's 10-year history, including contemporary, renaissance, world, folk, and jazz songs. \$12-\$20. Visit www.singsix.com/store/greatest-hits for tickets.

"Bernstein and Beethoven: Part II." 8 p.m. at The Music Center, Strathmore, 5301 Tuckerman Lane, North Bethesda. As a continued celebration of the Leonard Bernstein Centennial, the National Philharmonic Chorale will join Philharmonic Music Director and Conductor Piotr Gajewski in performing Bernstein's Chichester Psalms, composed during a period of great emotional and creative distress. After an intermission, Gajewski will again lead the National Philharmonic Chorale in Beethoven's Symphony No. 9 in D minor, Op. 125. A pre-concert lecture will take place between 6:45-7:15 p.m. \$42-\$78; young people 7-17 are free. Visit nationalphilharmonic.org or call 301-581-5100.

SUNDAY/JUNE 2

Artist Talk: "Dialogues." 2-4 p.m. at Waverly Street Gallery, 4600 East West Highway, Bethesda. In his new exhibit, Cristian Ianculescu explores space as a medium for communication. His works use distance, posture, and rhythm to create volumes which facilitate or inhibit interactions. The intimate scale of the work allows the viewer to exercise the freedom of an outside observer, and maintain a god-like detachment. Visit www.waverlystreetgallery.com for more.

Winter Dreams in June. 3 p.m. at the Cultural Arts Center, Montgomery College, in Silver Spring. The fourth and final concert of the Symphony of the Potomac's 2018-2019 season, Winter Dreams in June, features an all-Russian program, under the baton of Music Director Joel Lazar. Advance tickets to the performance, \$15 (adults), \$5 (student/youth under 18), and \$10 (groups of 10 or more), at BoxOfficeTickets.com until Saturday, June 1. Tickets purchased at the door are \$20 (adults), \$17 (adults over 65), and \$5 (students with ID/youth under 18).

Broadway Cabaret. 7-10 p.m. at Congregation Har Shalom, 11510 Falls Road, Potomac. Enjoy a showcase of songs from more than a dozen celebrated musicals. The lively event features cast members from 14 years of Har Shalom Players' shows, along with special guest vocalist Ben Lurye. Wine and dessert will be served. \$18-22. Buy advance tickets at www.harshalom.org/cabaret.

Thinking about aging in place?

**"Cutting the Cord:
Alternatives to Cable TV"**
free, Thursday, May 16, 7 – 9 pm
Potomac Comm Ctr, 11315 Falls Road

Bring a Friend Social Lunch
Thursday, May 23, 12 noon
Tally Ho Restaurant, Potomac Village

240-221-1370 to learn more
www.PotomacCommunityVillage.org

Past issues of

**THE
CONNECTION
NEWSPAPERS**

back to 2008
are available at

<http://connectionarchives.com/PDF>

**THE
CONNECTION**
Newspapers & Online

UPCOMING SPECIAL SECTIONS

April

4/24/19.....Senior Living/Mother's Day Celebrations,
Dining & Gifts/Spring Outlook

May

5/1/19.....Mother's Day Dining & Gifts II
5/8/19.....HomeLifeStyle
5/15/19.....A+ Camps & Schools
5/22/19.....Senior Living
5/29/19.....Connection Families: Fun, Food,
Arts & Entertainment

Email SALES@CONNECTIONNEWSPAPERS.COM for
more specials, digital advertising options and pricing.



Have The Connection emailed
directly to you every week!

www.connectionnewspapers.com/subscribe

**LOCAL MEDIA
CONNECTION**
Newspapers & Online
703-778-9431
www.ConnectionNewspapers.com

Reaching Suburban Washington's Leading Households

- Alexandria Gazette Packet
- Arlington Connection
- Burke Connection
- Centre View
- Chantilly Connection
- Fairfax Connection
- Fairfax Station/Chantilly/Lorton Connection
- Great Falls Connection
- McLean Connection
- Mount Vernon Gazette
- Oak Hills/Hemdon Connection
- Potomac Almanac
- Reston Connection
- Springfield Connection
- Vienna/Dalton Connection

We Bring the Zoo to You!

**SQUEALS
N WHEELS**

Traveling Petting Zoo

www.squealsonwheels.us

301-765-0270

We are licensed by the United States Department of Agriculture and Insured

jill@squealsonwheels.us

Potomac REAL ESTATE

PHOTOS BY DEB STEVENS/THE ALMANAC

March, 2019 Sales, \$890,000~\$1,035,000

IN MARCH 2019, 46 POTOMAC HOMES
SOLD BETWEEN \$2,150,000-\$545,000.



2 12409 Rivers Edge Drive
— \$962,000



4 10629 Morning Field Drive — \$950,000



8 8633 Red Coat Lane
— \$890,000



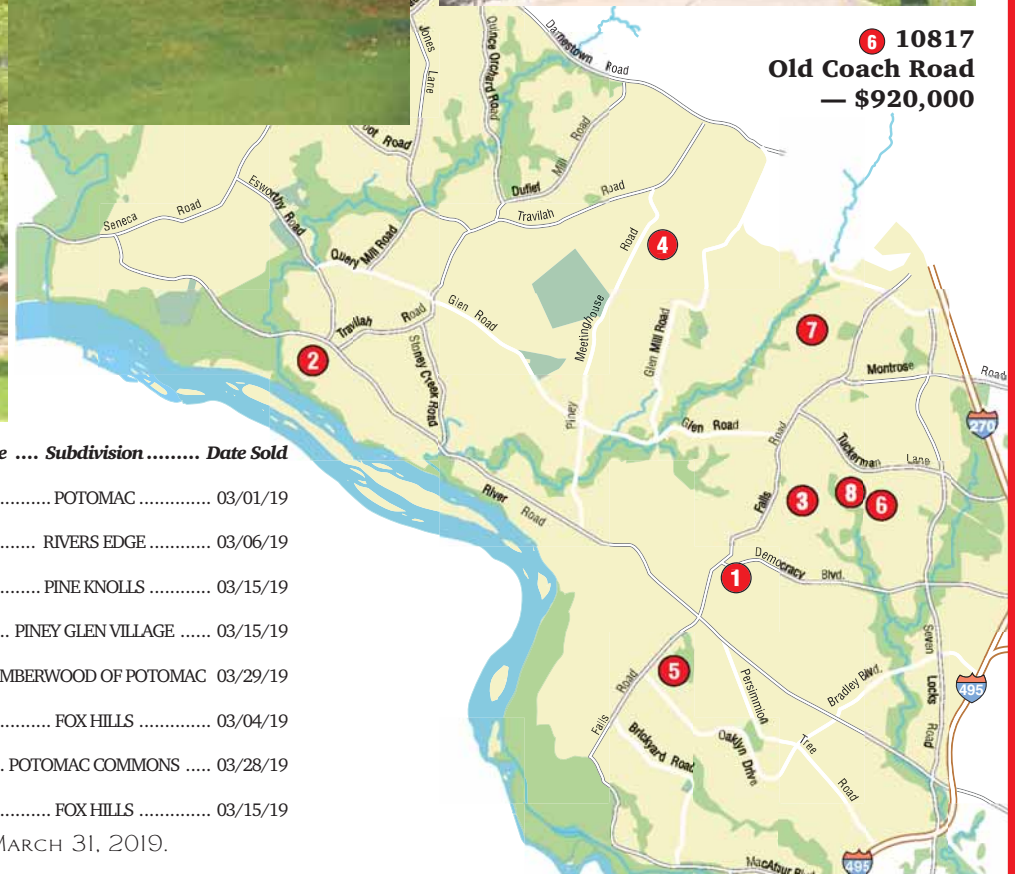
3 9104 Cranford Drive
— \$955,000



6 10817 Old Coach Road
— \$920,000



5 10213 Garden Way
— \$940,000



Address	BR	FB	HB	...	Postal City ..	Sold Price	Type	Lot AC ..	PostalCode	Subdivision	Date Sold
1 10524 DEMOCRACY BLVD	4	6	1	POTOMAC	\$1,035,000	Detached ..	0.56	20854	POTOMAC	03/01/19
2 12409 RIVERS EDGE DR	4	4	1	POTOMAC	\$962,000	Detached ..	2.00	20854	RIVERS EDGE	03/06/19
3 9104 CRANFORD DR	5	4	1	ROCKVILLE	\$955,000	Detached ..	0.35	20854	PINE KNOLLS	03/15/19
4 10629 MORNING FIELD DR	4	3	1	POTOMAC	\$950,000	Detached ..	0.19	20854	PINEY GLEN VILLAGE	03/15/19
5 10213 GARDEN WAY	4	3	1	POTOMAC	\$940,000	Detached ..	0.42	20854	TIMBERWOOD OF POTOMAC	03/29/19
6 10817 OLD COACH RD	4	3	POTOMAC	\$920,000	Detached ..	0.34	20854	FOX HILLS	03/04/19
7 12609 N STABLE HOUSE CT	4	2	1	POTOMAC	\$919,000	Detached ..	0.26	20854	POTOMAC COMMONS	03/28/19
8 8633 RED COAT LN	5	3	1	POTOMAC	\$890,000	Detached ..	0.24	20854	FOX HILLS	03/15/19

COPYRIGHT 2019 MARKETSTATS FOR SHOWINGTIME. SOURCE: BRIGHT MLS AS OF MARCH 31, 2019.

BULLETIN BOARD

FROM PAGE 5

proof of age (state ID, birth certificate or passport). For more information, call 311.

Seeking Applicants. Rebuilding Together Montgomery County is looking to increase their service to the veteran community and all Veterans or spouses if Veteran spouse has died who meet our income limits are encouraged to apply. Applications are accepted year round. The application is at rebuildingtogethermc.org/wp-content/uploads/2017/07/FY18-Homeowner-Application.pdf. Income requirements are listed on the first page.

Tally Ho Toastmaster's Club. 7:30-8:30 p.m. in the Potomac Community Center, 11315 Falls Road. Become a confident public speaker and strong leader with Tally Ho Toastmasters. First and third Mondays each month.

SUPPORT. Two county services can help residents find out more about services for seniors and individuals with disabilities. The Aging & Disability Resource Unit (ADRU), part of the Department of Health and Human Services, provides assistance, referrals to services and specific information to seniors, individuals with disabilities and caregivers by telephone and in-person. The Connect-A-Ride program provides information and referral for older adults and adults with disabilities about transportation options; including public, private and volunteer transportation services. In addition, the program assists callers with applications for programs such as the Escorted Transportation Program, Call-n-Ride and Metro Access. Language interpretation is available for both services. The Aging & Disability Resource Unit is open Monday and Friday 8:30 a.m. to 5 p.m. and open Tuesdays, Wednesdays and Thursdays 8:30 a.m. to 7:30 p.m. Call the ADRU at 240-777-3000. The Connect-a-Ride program, funded by Montgomery County and operated by the Jewish Council for the Aging, is open Monday through Friday 9 a.m. to 5 p.m. Call Connect-a-Ride at 301-738-3252.

The Montgomery County Commission on Common Ownership Communities (CCOC) has launched a new online training program for common ownership community board members. Visit www2.montgomerycountymd.gov/CCOC-Training.

Master Gardener Plant Clinics. Montgomery County Master Gardeners are available to answer gardening questions at walk-in plant clinics. Bring plant and insect samples, garden problems and questions. Drop off plant and insect samples, Monday-Friday, year-round, 8:30 a.m.-4:30 p.m. at 18410 Muncaster Road, lower level, Ballard Phone Room.

English Classes. The Literacy Council of Montgomery County is offering free day and evening English classes (beginning, intermediate and advanced levels) to adult county residents at several locations. Prospective students must attend a 3 1/2 hour orientation in Rockville. The Literacy Council is always looking for volunteers to help in a variety of ways. For more information email info@literacycouncilmd.org or call 301-610-0030.

Shades of Green Program. The Montgomery County Planning Department is offering free trees to qualifying property owners in certain urban districts of Montgomery County. Qualifying property owners are invited to participate in the program by filling out a form at www.montgomeryplanning.org/shadesofgreen.

Catholic Bible Study. Monday evenings and Wednesday mornings at Our Lady of Mercy Catholic Church, 9222 Kentsdale Drive, Potomac. The local chapter of "Walking With Purpose" invites women to personal study, small group discussion and speakers designed to link everyday challenges with biblical teaching. Childcare available. Visit walkingwithpurpose.com or email wwp.olom.details@gmail.com for more.

Youth Basketball Registration. Montgomery County Recreation is now accepting team and individual registrations for youth basketball leagues and programs for all skill levels. Call 240-777-6870 or visit www.montgomerycountymd.gov/rec for more.

Career Gateway Program. Learn how to write a resume, polish networking, interviewing skills and use internet job search resources more effectively. Each session of the Career Gateway features 30 hours of small group classroom instruction over five days, comprehensive take home materials, practical exercises and a long-term mentors. Cost is \$75. Call 301-255-4215 or egreenberg@AccessJCA.org for more.

The county's **Department of Permitting Services (DPS)** is conducting a "sign sweep"

to get rid of signs posted illegally in county right-of-ways. DPS plans to have regular sweeps throughout the year. Call 311 to report signs in the public right-of-way for removal.

Victims of graffiti should file a report with Montgomery County Police by calling 301-279-8000. Make sure to take a photo of the graffiti. Property owners are responsible for removing graffiti on their property. Visit graffitifree.org/contact.html.

Find information for home care, housing, transportation, or senior lifestyle issues by calling the **Senior Helpline** at 301-255-4200. This free service, offered by the Jewish Council for the Aging, and open to everyone, provides expert referrals to more than 4,000 resources in the area.

County residents can drop off **bulky rigid plastic items** such as laundry baskets, kiddie pools, chairs, trash cans and pet carriers at the Shady Grove Solid Waste Processing Facility and Transfer Station. All items should be empty, rinsed and free of loose dirt, soil, etc.

Connect-A-Ride offers low-priced transportation to medical appointments, pharmacies, grocery stores and more for low-income, disabled residents 50 and over. Contact the Jewish Council for the Aging at 301-738-3252.

Alzheimer's Association support groups provide a place for people with Alzheimer's, their caregivers, family members, and/or friends to share information, caregiving tips and concerns throughout the Alzheimer's journey. Groups are facilitated by trained group leaders and are ongoing, free and open to the community. Call the Alzheimer's Association 24/7 Helpline at 800-272-3900 before attending a group for the first time to verify meeting information. Visit www.alz.org/nca.

Zumba at Village Yoga. A Latin-inspired, calorie-burning dance fitness-party. Classes held on Tuesday and Thursday nights at 7:30 p.m., Saturdays at 11:30 a.m., and Sundays at 5:15 p.m. at 10154 River Road. Call 301-299-1948 or visit www.villageyogayogi.com.

Beginner's Yoga Classes at Village Yoga as well as Beginner's Gentle Flow class throughout the week. 10154 River Road. Call 301-299-1948 or visit www.villageyogayogi.com.

Members Wanted. The Potomac Area Newcomers Club is a group of more than 200 women who have moved to the Potomac area. The club offers bridge, mah jong, book groups, golf, luncheons and museum trips as a way to help newcomers and current residents form new friendships, expand horizons and take advantage of opportunities in the area. Visit www.potomacnewcomers.com

Free Parent-Child Playgroup. Every Friday at 9:30 a.m. at the Har Shalom Early Childhood Education Center. Meet new friends as you and your child play with age appropriate toys. Call 301-299-7087.

Montgomery County Master Gardeners are seeking applicants for their upcoming training class. Class size is limited and filled on a first-come, first-served basis. To be placed on the application list, or for more information, call 301-590-2836.

VOLUNTEER OPPORTUNITIES

Delivers meals to house-bound seniors, convalecents and persons with disabilities. It receives minimum government funding and relies instead on contributions. Donations are needed to help with unmet meals costs for clients who cannot afford to pay. If you can help, send a check to Rockville Meals on Wheels at P.O. Box 465, Rockville, MD 20848-0465 or visit the website to contribute through Pay Pal at www.rockvillemealsonwheels.org. For more information, call 301-340-1559, Monday through Friday, 8 a.m. - noon.

Guiding Eyes for the Blind - Montgomery Region is looking for volunteers to foster and train future guide dogs. Volunteers will foster a specially bred guide dog for 14 months, attend bi-monthly training classes, and teach the pup house manners, people skills and socialization within the community. Dog crates, training equipment and monthly medications are provided. Contact Margie Coccodrilli at 301-869-2216 or gebraiser@comcast.net or visit www.guidingeyes-md.org.

Volunteers are needed to **assist sexual assault, domestic violence victims, and their families** through the Victim Assistance and Sexual Assault Program (VASAP) of the Montgomery County Department of Health and Human Services. Interviews are currently being conducted for a December 2016 training session. 240-777-1355 or www.montgomerycountymd.gov/vasap.



TO ADVERTISE IN THIS PAPER, CALL BY MONDAY 11:00 AM 703-778-9411

Announcements
Announcements

**We pay top \$ for STERLING,
MEN'S WATCHES,
JEWELRY, COSTUME JEWELRY,
FURNITURE, PAINTINGS AND CLOCKS.**

Schefer Antiques
703-241-0790
theschefers@cox.net



TO ADVERTISE IN THIS PAPER, CALL BY MONDAY 11:00 AM 703-778-9411

**Forget Daily
Commuting**

**Print and digital media
sales consultant for area's
most popular and trusted
local news source**

Manage your own hours from home
Enjoy flexible schedule
plus no daily commute
Help local businesses grow
Unique opportunity to be a voice
in your community
Competitive compensation

Call Jerry Vernon
703-549-0004
*Connection Newspapers & Digital Media
Trusted Connection to Local Communities*

**ATTENTION
ADVERTISERS:**

expand your
audience beyond
our weekly print
edition with

**THE
CONNECTION
DIGITAL**

- Email Marketing
- Social Media
- Sponsored Content

FOR MORE INFORMATION
CALL 703.778.9431
OR VISIT
CONNECTIONNEWSPAPERS.COM/ADVERTISING



CONNECTION
Newspapers & More
703-778-9431
www.ConnectionNewspapers.com

Reaching Suburban Washington's Leading Households

•Montgomery Times	•Prince Georges	•Washington Post
•Arlington Gazette	•Fairfax Star	•The Washington Connection
•Baltimore Sun	•Long Hills Connection	•Rockville Post
•Dorchester News	•Oakton Connection	•Newmarket Connection



**You can read any
of this week's
15 papers digital
editions here:**

www.ConnectionNewspapers.com/PDFs

An expert is someone
who knows some of the worst mis-
takes that can be made in his subject
and how to avoid them.

-Werner Heisenberg

The Weak Of



By KENNETH B. LOURIE

Concerning the three 'weak's' during which this arc will publish: last week's "The Weak Before," this week's "The Weak Of" and next week's "The Weak After," this week's "The Weak Of" when I actually lie down for my bi-monthly CT scan (and as it coincides occasionally, my semiannual brain MRI), is the easiest.

The worry of its occurrence is over, since I'm on site and "gowned up" waiting to hear my name called. And the worry of the results has not yet seeped in because the scanning process has barely begun and nothing will happen and/or be expected to be communicated in the next few days anyway.

Next week – when I know the results are somewhere and I've not received any feedback from my oncologist, within five days or so – is when I'll begin to stress for all the reasons with which you regular readers are familiar.

What this "The Weak Of" means to me is progress. And even though that 'progress' could mean disappointing news, it could also mean that my status is quo.

And as difficult as hearing that the CT scan showed growth and/or the brain MRI showed something more, at least we'd gain some knowledge that we didn't have previously, and that new knowledge will be crucial as new treatment options are considered.

However, it's not as if I feel I'm in the dark during the intervals between scans. Hardly. It's more that I'm in a situation where knowledge is a powerful tool and the more of it my doctors, particularly my oncologist, have about me, the better.

The only problem? The frequency of these recurring diagnostic scans means nearly every week, bi-weekly immunotherapy infusions notwithstanding, I'm in some kind of 'weak.'

As you all know, I can compartmentalize but, I'm afraid the compartments are starting to fill up. Ten-plus years of surviving cancer will do that.

The CT scan and MRI appointments, in and of themselves are not compartment-filling though. Having had over 50 of them by now, I'm unaffected. Moreover I drive the same route to the same facility and are tended to by the same technicians; my good luck charms, as I tell them.

They always greet me by name, smile and ask how I'm doing. I likewise reply in a positive way and thank them for the many good results I've had and encourage them to keep up the good work (I realize they have nothing to do with the actual results, good or bad, but I still like to prime the pump, so to speak).

And when the process is complete, I'll leave feeling more upbeat than when I arrived. A feeling which continues until the next week, 'the weak after.' That's when I'll feel the same kind of emotional jitters I experienced during 'the weak before.'

So, as I begin 'the weak of,' I begin it with hope and humor, my stock-in-trade. Hope for all the obvious reasons and humor because whatever happens, I'll likely make some joke about it and try to lighten the weight of it all with as light a touch as I can muster.

But for the time/'weak' being, I will enjoy the not-knowing the results and bask in the presumptive naivete. Because, if and when there is confirmation that my ship has sailed or that it's beginning to take on water, there might not be too much funny that I can say or do at that point to turn the tide.

Nevertheless, I'd like to think I'll be up to the challenge. One never knows. These three 'weak's' I can manage. We'll see about the next one.

Kenny Lourie is an Advertising Representative for The Potomac Almanac & The Connection Newspapers.



**7019 NATELLI WOODS LANE
AVENEL, BETHESDA, MARYLAND**

Amazing Avenel private paradise with pool, spa and garden surrounded by greenery. 6BR, 7FBA, 2HBA, 4 car garage, wine cellar. \$6,500,000

Anne Killeen 301-706-0067
Robert Hryniewicki 202-243-1620



**9811 AVENEL FARM DRIVE
AVENEL, POTOMAC, MARYLAND**

Incredible custom estate w/ nearly 14,000 SF on 2 acres in golf community. 6BR, 7.55BA, 3 kitchens, outdoor kitchen, wine cellar, 4 car gar! \$5,995,000

Anne Killeen 301-706-0067
Robert Hryniewicki 202-243-1620



**10704 ALLOWAY DRIVE
POTOMAC, MARYLAND**

NEW LISTING! Gorgeous gated estate on 2.6+ acres with pool and tennis court in Potomac Falls. 6BR, 7.55BA, main level master, sauna, wine cellar. \$2,695,000

Robert Hryniewicki
Adam Rackliffe 202-243-1620



**HRL Partners - Robert Hryniewicki,
Adam Rackliffe, Chris Leary**



**11725 CENTURION DRIVE
PALATINE, POTOMAC, MARYLAND**

Move-in ready! 15,000 SF Georgian Colonial w/ pool, sport tennis court, sauna, theater, 2+ acres. Too many upgrades to mention! Main level BR. 6 car gar. Don't miss! Churchill. \$2,498,000

Anne Killeen 301-706-0067



**9026 BRONSON DRIVE
POTOMAC, MARYLAND**

Rarely available, classic, Greenwich style, painted brick col; stunning. 3 acres in the most coveted location in Potomac. Charm & character abound w/modern amenities. Whitman. \$1,998,000

Anne Killeen 301-706-0067



**11505 SKIPWITH LANE
POTOMAC FALLS, POTOMAC, MD**

Classic, handsome, 6BR/4.5BA Colonial. Coveted 9' ceilings, 2 quiet ac. Big rooms, custom moldings/built-ins. Churchill. \$1,498,000

Anne Killeen 301-706-0067
Adaline Neely 301-580-2214



Anne Killeen



**12713 MAIDENS BOWER DRIVE
ESWORTHY PARK, POTOMAC, MD**

Beautiful Colonial in a quiet community, sited on 2 lush ac of exquisite landscaping. Flooded w/light, 4BR/3.5BA, large rooms, new windows, lovingly maintained by original owners. Wootton. \$950,000

Alexa Kempel 240-678-4561



UNDER CONTRACT

**6613 BELLE CHASE CT
LAYTONSVILLE KNOLLS, LAYTONSVILLE, MD**

Easy living! Forget condo living w/high fees. Renovated top to bottom, this easily accessible rambler is turnkey ready for its new owners! Sited on 1+ ac, backing to a golf course, 4BR, 3.5BA shows like a dream. \$749,000

Alexa Kempel 240-678-4561



SOLD

**12039 GREAT ELM DRIVE
GREAT ELM FARM ESTATES, POTOMAC, MD**

Mitchell and Best Colonial in premier Potomac Community. Renov w/gourmet kit, new master BA w/heated floors, hardwood floors on 2 levels, new window/roof. Churchill cluster. \$1,350,000

Alexa Kempel 240-678-4561



Alexa Kempel