

EST. 1955  
**Hadeed**  
 ORIENTAL RUG CLEANING  
 AND IN-HOME SERVICES

In-Plant Express  
 or Signature  
 Rug Cleaning

FOR EVERY **2** RUGS CLEANED → GET THE **3<sup>RD</sup>** RUGS CLEANED → FOR **Free!**

**Hadeed-Ayoub** 4918 Wisconsin Ave.  
**Hadeed-Honar** 330 N. Stonestreet Ave.  
**202-678-1111 • JoeHadeed.com**  
 Offer Expires 2/16/20. Get the third rug of equal or smaller size for free. Not valid w/any other offers

# Potomac ALMANAC

**WELLBEING**  
 PAGE 4

A middle school rivalry ruled the basketball courts last week, Read about it on Page 2.

## Full Court Press In Potomac

NEWS, PAGE 2

Thrive Montgomery program  
 NEWS, PAGE 3

Black History Event  
 NEWS, PAGE 4

Colorful Chinese  
 Dance at Library  
 NEWS, PAGE 5

ATTENTION POSTMASTER:  
 TIME SENSITIVE MATERIAL.  
 REQUESTED IN HOME 2-6-20

U.S. POSTAGE  
 PAID  
 EASTON, MD  
 PERMIT #322

PHOTO BY BARRY GLASSMAN ENTERTAINMENT, PAGE 6 ♦ KENNY LOURIE, PAGE 7 ♦ REAL ESTATE SALES, PAGE 8

# NEWS

ANY TYPE OF RUG, ANY PRICE LEVEL, WE HAVE A SOLUTION FOR YOU!  
**Our Best Offer is Back for a Limited Time!**

**FOR EVERY 2 RUGS CLEANED → GET THE 3<sup>RD</sup> RUG CLEANED → FOR FREE!**

3 Rugs = 1 Cleaned FREE! • 6 Rugs = 2 Cleaned FREE! • 9 Rugs = 3 Cleaned FREE! On & On

\*Hurry! Offer Expires 2/16/20. Valid on Express or Signature Rug Cleaning Services. Get the third rug of equal or smaller size for free. Not valid w/any other offers.

**OR TAKE**

IN-PLANT RUG CLEANING Expires 2/16/20. Not valid w/any other offers.	<b>15% off*</b>
IN-PLANT RUG RESTORATION Expires 2/16/20. Not valid w/any other offers.	<b>5% off*</b>
WALL-TO-WALL CARPET STEAM CLEANING OR HARDWOOD FLOOR CLEANING & POLISHING Expires 2/16/20. Not valid w/any other offers.	<b>20% off*</b>

**We Have Developed a New Formula That Removes Most Pet Stains & Odors!**

**HADEED-AYOUB**  
 Oriental Rug Cleaning & In-Home Services  
 4918 Wisconsin Ave. DC/MD  
**202-678-1111**

**HADEED-HONAR**  
 Oriental Rug Cleaning & In-Home Services  
 330 N. Stonestreet Ave. Rockville, MD  
**202-678-1111**

**Free Pickup & Delivery!**

Includes: Furniture Moving and Rolling & Laying the Rugs!

**JoeHadeed.com**

\*Available in MD, DC, & VA. Min. order required, some restrictions apply. Doesn't include breakables. Call for details. †Some add'l fees may apply.



PHOTOS BY BARRY CLASSMAN

Hoover Middle School and Cabin John Middle School had their annual rivalry game in late January. The rivalry is so big that they play it at Churchill High School to accommodate all of the fans. Final score was Hoover 37, Cabin John 17.



PHOTO CONTRIBUTED

On January 27, the following Montgomery students were honored at the State House in Annapolis for an honor they received at National History Day 2019: Joey Huang (Winston Churchill High School); Aidan Goldenberg-Hart (Richard Montgomery High School); Charles Shi (Montgomery Blair High School); Daniel Greigg (Montgomery Blair High School) and Eli Protas (Richard Montgomery High School). Winston Churchill High School is located in Potomac Maryland.

**POTOMAC PIZZA LUNCH COMBOS**

<p><b>\$9.99 PIZZA COMBO</b></p> <ul style="list-style-type: none"> <li>• ANY TWO SLICES OF PIZZA WITH UP TO 3 TOPPINGS EACH</li> <li>• CHOICE OF ONE:                     <ul style="list-style-type: none"> <li>◦ SMALL TOSSED SALAD</li> <li>◦ CUP OF SOUP</li> <li>◦ SMALL FRIES</li> </ul> </li> <li>• SMALL FOUNTAIN DRINK</li> </ul>	<p><b>\$10.99 SUB COMBO</b></p> <ul style="list-style-type: none"> <li>• ANY SUB, SANDWICH OR WRAP*</li> <li>• CHOICE OF ONE:                     <ul style="list-style-type: none"> <li>◦ SMALL TOSSED SALAD</li> <li>◦ CUP OF SOUP</li> <li>◦ SMALL FRIES</li> </ul> </li> <li>• SMALL FOUNTAIN DRINK</li> </ul> <p>*Additional charge for Tuna Steak.</p>
---	--

Combos available Monday thru Friday, 11am-4pm. Additional charge for priced condiments and Tuna Steak. Good for dine-in and carryout only. Not valid with other offers.

**POTOMAC PIZZA**  
**www.potomacpizza.com**  
 Dine-in, Carry-out, Delivery & Catering  
 Serving Our Communities Since 1978

**IT'S TIME FOR LUNCH!**

**CHEVY CHASE CENTER** 301 951 1127  
**COLLEGE PARK** 240 582 5242  
**POTOMAC PROMENADE** 301 299 7700  
**TRAVILLE VILLAGE CENTER** 301 279 2234

## BULLETIN BOARD

Submit civic/community announcements at [ConnectionNewspapers.com/Calendar](http://ConnectionNewspapers.com/Calendar). Photos and artwork welcome. Deadline is Thursday at noon, at least two weeks before event.

### SATURDAY/FEB. 8

#### Getting Answers About Dementia.

11 a.m. to 1 p.m. At Ingleside at King Farm, 701 King Farm Boulevard, Rockville. Caring for a loved one living with dementia can be both rewarding and stressful. Are you asking yourself these questions: How do I balance my own needs with those of my loved one? Is my loved one thriving in their current environment? What happens when I can no longer provide the right care and support? Enjoy brunch while you learn:

- ❖ How to talk with family about making a move to assisted living;
  - ❖ Taking care of myself when caring for another;
  - ❖ Discussing the future—family member and caregiver.
- RSVP at 240-206-6263 or email [infoIKF@Inglesideonline.org](mailto:infoIKF@Inglesideonline.org).

#### MONTGOMERY COUNTY REC JOB FAIR

Montgomery County Recreation is hiring part-time seasonal employees to work during the 2020 summer season, and the department will host job fairs in February. Available positions include lifeguards, camp counselors, camp directors and mainstream companions. Part-time/seasonal pay is competitive at \$13 an hour and increases based on experience. Applicants must be at least 15 years of age. Bilingual

applicants are encouraged to apply.

#### SCHEDULE, LOCATIONS AND DATES:

- ❖ Wednesday, Feb. 26, 5 – 8 p.m. at the Gwendolyn Coffield Community Recreation Center, 2450 Lyttonsville Rd., Silver Spring.

Applicants should bring their resumes, come dressed for success and be prepared to discuss their experience. The department is looking for dedicated, hardworking and motivated individuals. For questions about the job fairs, contact [recreationcustomerservice@montgomerycountymd.gov](mailto:recreationcustomerservice@montgomerycountymd.gov).

#### FREE TAX HELP FOR RESIDENTS

County residents earning \$56,000 or less can schedule an appointment for

SEE BULLETIN, PAGE 3

[WWW.CONNECTIONNEWSPAPERS.COM](http://WWW.CONNECTIONNEWSPAPERS.COM)

## “Thrive Montgomery” Looks at the Next 30 Years

**W**hat is Thrive Montgomery 2050? Tremendous and rapid social, environmental, technological, demographic and economic shifts over the next few decades necessitate revisions to Montgomery County’s guiding framework for growth, called the General Plan.

As Montgomery Planning works to update this important plan, the community is asked to help ensure that the county remains a vibrant, verdant and welcoming place — with an innovative economy — where all can thrive.

Thrive Montgomery 2050 is our chance to figure out — together — how the county can be a great community over the next 30 years. It’s about how we respond to future opportunities and challenges in the county. Through Thrive Montgomery 2050, plan-



**Thrive Montgomery 2050.**

ning staff is identifying and examining the changes occurring, considering what we want for tomorrow, and then developing a shared vision that allows us to keep what we love about Montgomery County while planning necessary changes that will ensure

the best possible future.

The result of Thrive Montgomery 2050 will be a living and breathing plan that guides decision-making and helps secure resources to ensure the county is a place where everyone can be successful, have

opportunities, and enjoy a high quality of life in a beautiful and resilient environment. There are three priorities for the plan:

❖ **Economic health:** We want to ensure a vibrant, strong and competitive economy by supporting small businesses and business innovation, and to attract and retain a high-quality, diverse workforce.

❖ **Equitable communities:** We want to create a place where all residents have equal access to affordable housing, healthy food, employment, education, and more.

❖ **Environmental resilience:** We want to preserve our natural and built resources and use the best strategies to fight climate change and mitigate the impact of land development.

Learn more about Thrive Montgomery 2050 and how to get involved at [ThriveMontgomery.com](http://ThriveMontgomery.com).

PHOTO CONTRIBUTED

## Montgomery County Council Commemorates Black History Month on February 11 at 9:30 a.m.

**On Tuesday, Feb. 11 special program focuses on honoring historic African American communities in Montgomery County.**

**T**he Montgomery County Council will hold a special program on Tuesday, Feb. 11 at 9:30 a.m. to commemorate Black History Month. The Council will discuss the importance of preserving and honoring African American communities in Montgomery County. The Black History Month commemoration will be held at the Council Office Building (100 Maryland Ave., Rockville, Md.) in the third floor Council Hearing Room.

“One of the wonderful aspects of living in Montgomery County is our diversity,” said Council President Sidney Katz. “People from many cultures, countries, and communities add to the rich mosaic of life here. Our population exceeds one million people and 19 percent of our residents identify as Black or African American.

“It’s my hope that this year’s Black History Month commemoration will be an opportunity to learn about some of our early

African American communities. Many of these areas retain their strong cultural identification associated with generations of families. The Council will honor their legacies and learn lessons from their struggles,” said Katz.

The Council’s Black History Month commemoration will include a video segment that documents historic African American communities including Emory Grove in Gaithersburg, Scotland in Potomac and White Ground in Boyds. The video features members of these communities including: Kay Freeman, Eddie Dove, Carolyn Taylor, Rev. C. Glenn Taylor, Claudia Golenda and Roger Cartledge. The Council will conclude the commemoration with a special awards presentation for those who participated in

the making of the video.

The Council has been hosting commemorative events to honor Black History Month since 2015. Last year’s commemoration focused on the importance of preserving and honoring the County’s African American history and its connection to fostering racial equity.

The Black History Month commemoration will be televised live by County Cable Montgomery (CCM), which can be viewed on Cable Channels 996 (high definition) and 6 (standard definition) on Comcast; Channels 1056 (HD) and 6 (SD) on RCN; and Channel 30 on Verizon. It also will be available live via streaming through the Council web site at <http://tinyurl.com/z9982v8> and Facebook Live.

### BULLETIN BOARD

#### FROM PAGE 2

free tax preparation through the Community Action Agency’s Volunteer Income Tax Assistance (VITA) program. Free tax assistance is available now through April 15, 2020 at sites throughout the county: Gaithersburg (Mondays), Silver Spring (Tuesdays), Rockville (Wednesdays), East County and Germantown (Thursdays), and Wheaton (Fridays). To make an appointment, visit [montgomerycountymd.gov/cashback](http://montgomerycountymd.gov/cashback), call 240-777-1123 or call 3-1-1. TTY users, please call MD Relay (711). To request special accommodations, call 240-777-1123 at least three business days in advance of appointment.

#### TOP 10 BEER, WINES AND SPIRITS

**Corona Extra** is the top-selling beer in Montgomery County, Barefoot wines are the leading wine sellers and Tito’s Handmade Vodka is the most popular spirit,

according to 2019 sales results released for the first-time ever by Montgomery County’s Alcohol Beverage Services (ABS). The lists are based on sales dollars through the ABS warehouse to private restaurants, privately owned beer and wine stores and the 25 County-operated liquor and wine retail stores. The top 10 beer list (by products) in the order of popular sales:

- ❖ Corona Extra
- ❖ Heineken
- ❖ Modelo Especial
- ❖ Miller Lite
- ❖ Bud Light
- ❖ Stella Artois
- ❖ Budweiser
- ❖ Coors Light
- ❖ Sam Adams
- ❖ Dogfish

The top 10 wine list in order of popular sales by brand family:

- ❖ Barefoot
- ❖ Kendall Jackson
- ❖ Black Box
- ❖ Woodbridge
- ❖ Yellow Tail
- ❖ Sutter Home

- ❖ La Marca
- ❖ La Crema
- ❖ Bota Box
- ❖ Beringer

The top 10 spirits list in order of popular sales by brand family:

- ❖ Tito’s Handmade Vodka
- ❖ Hennessy
- ❖ Jack Daniel’s
- ❖ Johnnie Walker
- ❖ Patron Tequila
- ❖ Jameson
- ❖ Grey Goose
- ❖ Bacardi Rum
- ❖ Smirnoff
- ❖ Maker’s Mark

#### TOWN HALL

The Montgomery County Council will host a pedestrian, bicycle and traffic safety town hall meeting on Sunday, Feb. 9 at 2 p.m. at Wheaton High School (12401 Dalewood Drive in Silver Spring) to hear directly from residents about the safety issues they are encountering on roadways and sidewalks and in crosswalks located in Montgomery County. Residents are encouraged to attend the meeting to talk with Councilmembers about

areas of concern in the community and to learn more about the County’s ongoing efforts to meet the goals of Vision Zero. Contact Juan Jovel at [Juan.Jovel@montgomerycountymd.gov](mailto:Juan.Jovel@montgomerycountymd.gov) or call 240-777-7931.

#### PARK SERVICE COMPLETES PROJECTS

The National Park Service (NPS) and Federal Highway Administration (FHWA) have completed work to repave roads in five national parks in the National Capital Area for the season. These construction projects demonstrate the NPS’s ongoing commitment to providing safe, smooth roads for travelers in the D.C.-area. The completed work includes:

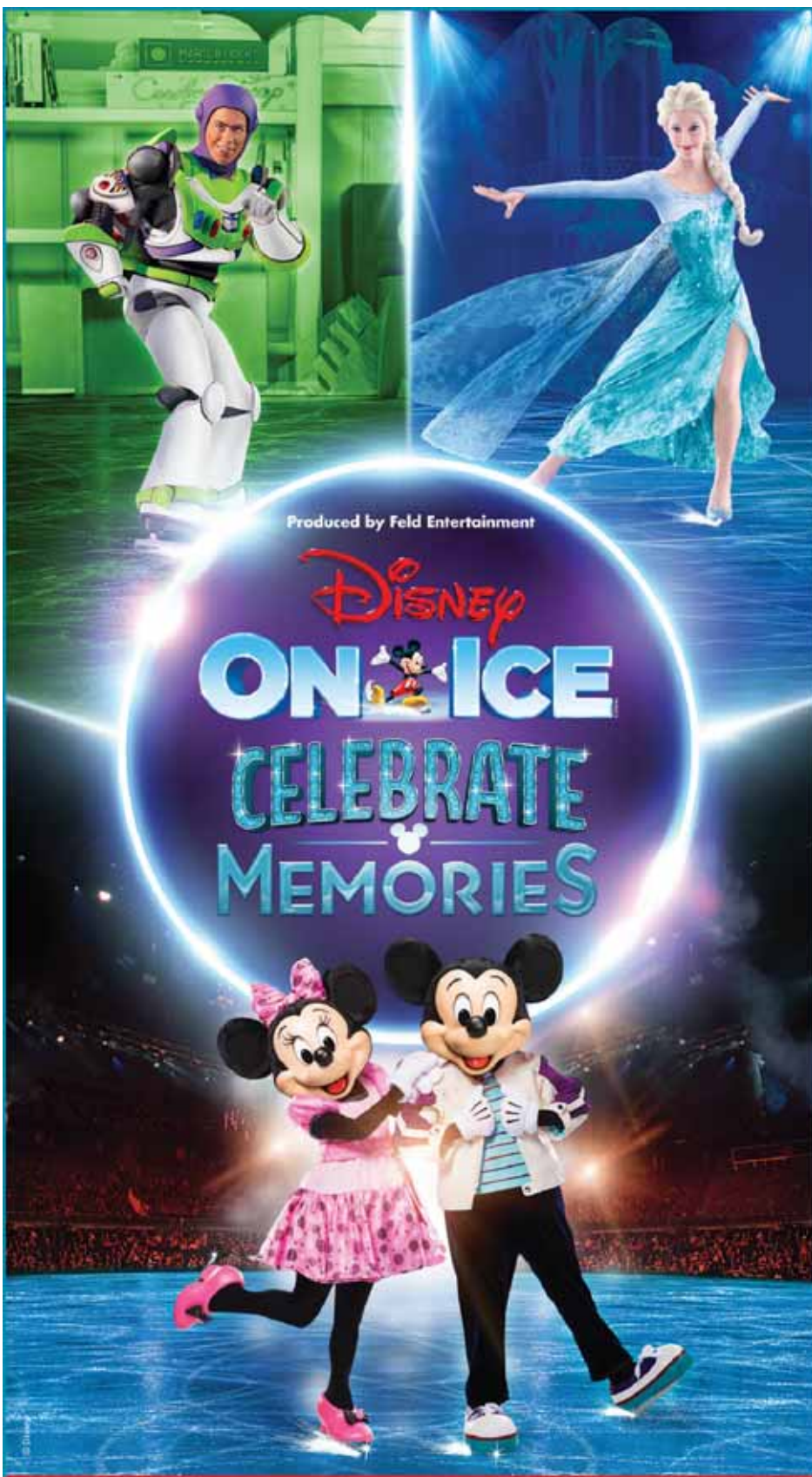
- ❖ Clara Barton Parkway Targeted repaving between Chain Bridge and Carderock, Maryland
- ❖ More than 6.5 miles southbound.
- ❖ Approximately 7 miles northbound.
- ❖ George Washington Memorial Parkway Targeted repaving between Spout Run Parkway and I-495, the Capital

#### Beltway

- ❖ Approximately 7.5 miles southbound.
- More than 7.5 miles northbound.

#### COMMUNITY SOLAR PROPOSAL

**Councilmembers Hans Riemer and Tom Hucker** introduced ZTA 20-01, Solar Collection Systems – AR Zone Standards, which would allow a targeted deployment of community solar projects on farms in the County’s Agricultural Reserve. Councilmember Craig Rice is a co-sponsor. ZTA 20-01 would open up 1,800 acres (or about two percent) of the County’s 93,000-acre Agricultural Reserve for community solar as a limited use. Currently, the zoning code prohibits community solar in the Agricultural Reserve. Maryland’s community solar law allows solar providers to sell solar energy to larger groups of consumers — groups of houses or apartment communities — who can not or have not yet installed solar panels.



Produced by Feld Entertainment  
**Disney**  
**ON ICE**  
**CELEBRATE**  
**MEMORIES**

**Tickets**  
**Start at \$15!**

Restrictions, exclusions and additional charges may apply. Subject to availability. Tickets at market pricing. Purchase tickets at venue box office or ticketmaster.com.

**ROYAL FARMS ARENA | FEB 5 – 9**

**CAPITAL ONE ARENA | FEB 13 – 17**

**DisneyOnIce.com**

## WELLBEING



PHOTO BY MARILYN CAMPBELL

**Washing your hands with soap and water is one of the way to avoid catching the flu.**

# Preventing the Flu

**Simple steps to help you stay healthy during the flu season.**

BY MARILYN CAMPBELL  
 THE ALMANAC

**H**eralded by body aches, chills and fe-ver, flu season is in full-swing. At a minimum it can be an inconvenience and at its worst it can be deadly. Influenza activity is considered to be widespread by in the Washington region, according to the Virginia Department of Health.

Influenza B/Victoria is the most common form of the virus that is circulating in our area, says Barbara Downes, Communicable Disease Epidemiology Manager with Fairfax County Health Department.

“Unlike a typical flu season when we tend to see influenza B in the spring at the end of the flu season, we are seeing influenza B predominantly circulating now,” she said. “Even though it can cause milder illness in adults and those who are otherwise healthy, it can be more severe in children.”

Knowing the causes and practicing preventative habits are keys to keeping the flu at bay. The Centers for Disease Control and Prevention reports that the flu virus spreads from one person to another primarily by touching or inhaling viral droplets that are made when a person with the flu coughs, sneezes or talks.

“One of the things that happens is that

someone coughs or sneezes into their hand and then touches a door knob and then someone comes behind them and touches the same door knob,” said Mary Anderson of the Montgomery Department of Health and Human Services. “That’s a really common way for a virus to spread. Cough or sneeze into your sleeve or elbow and make sure your nose and mouth are covered.”

Getting a flu shot is one of the best ways to prevent the flu, advises Kurt Larrick, Assistant Director of the Arlington County Department of Human Services. “It’s still not too late,” he said. “Peak flu season runs through February, and outbreaks can happen through late May.” Practicing good hygiene is a simple and effective, but often over-

**“Each year the flu kills thousands and thousands of people. It’s very important to pay attention to it and do simple things to prevent it.”**

**— Mary Anderson, Montgomery Department of Health and Human Services**

looked preventative measure “Wash your hands wash, your hands, wash your hands,” said Anderson “Wash your hands with plain old soap and water for 20 seconds. The soap doesn’t have to be fancy. If you don’t have access to soap and water, use an alcohol based hand sanitizer.”

“Every day communicable disease prevention tips are really important this time of year,” added Downes.

“Disposing of your tissues properly...and staying home when you are sick.”

While Coronavirus is a concern, Anderson says that the flu is a much greater threat to those in the Washington region. “It’s important to learn about the virus from China, but we’re not at high risk of it unless you’ve traveled to that part of China,” said Anderson. “The flu is much more of a threat. Each year the flu kills thousands and thousands of people. It’s very important to pay attention to it and do simple things to prevent it.”

# Year of the Rat Spurs Dance and Drums for Good Luck

Quiet time at the library was put on hold for the celebration.

BY PEGGY MCEWAN  
POTOMAC ALMANAC

**W**elcome to 4718, the Year of the Rat according to the Chinese Calendar.

The New Year, which started Jan. 25, was celebrated Feb. 1 at the Potomac Library with a Lion Dance, drums, music, dancing and a calligraphy demonstration.

The purpose of the morning's celebration was to promote Chinese cultural traditions, according to Michael Wu, executive director of Choy Wu Lion Dance Troupe from Fairfax, Virginia.

"The ancient myth of the Lion Dance is that a creature comes from the mountain [to take away] the bad luck people earned throughout the year – the negative energy," Wu said. "On the first day of the year you want to drive that energy away. On the first day of the year you want to celebrate and be happy."

Another story Wu told was that the monster came into the villages to terrorize the residents and destroy their belongings, causing the people to flee to the mountains. When one resident suggested they frighten the monster by creating a monster of their own and banging pots and pans, their success started the tradition of the noisy Lion Dance.

As the lions danced through the library, weaving between shelves of books, stopping to surprise readers and little children attracted by their colorful costumes, the sound of drums echoed throughout.

"It is one day you can be noisy in the library," Wu said.

Sisters Emily, 7, and Katie, 5, who were with their mother Carolyn for the celebration said the dragon dance was their favorite of the presentations.

"It was very educational, their mother said. "It was great to be exposed to a new culture."

Finally, the lions made their way to the meeting room and settled down, the dance troupe members left for other activities.

"This time of year is our busiest," Wu said. "We do weddings, birthdays, baby showers, business grand openings, it's all about bringing good luck."

The frenzy of the Lion Dance was followed by the soothing tones of a duet performance of traditional Chinese songs of the Chinese Zither by Lei Fang and Melody Chen.

Chen is just 11 years old but kept up well with her adult partner. She said she has been playing the instrument for 4 or 5 years and does it because she likes the music.

Another performance, by students from the Hope Chinese



The costumes were colorful at the Potomac Library.

PHOTOS CONTRIBUTED

School in Germantown where Fang and Chen study music, was a form of martial arts similar to Tai Chi.

"With the music we feel calm and peaceful, we do it slowly as exercise to get the body well and improve balance," performer Jiangyan He said.



# ENTERTAINMENT

Submit entertainment announcements at [www.connectionnewspapers.com/Calendar/](http://www.connectionnewspapers.com/Calendar/). The deadline is noon on Friday. Photos/artwork encouraged.

## NOW THRU MARCH 1

**Action and Reaction by Mark Goldman.** At Sandy Spring Museum, 17091 Bentley Road, Sandy Spring. Action and Reaction by Mark Goldman captures the most iconic moments in sports. This photographic exhibition showcases the intensity, athleticism, and success behind the action of D.C. area professional and collegiate level sports teams, while also revealing the competitiveness, heart, and emotion behind each player's reaction. Hours: Thursday, 10 a.m. – 8 p.m., Friday 10 a.m. – 5 p.m., Sunday 11 a.m. – 4 p.m., and the First Saturday of each month 10 a.m. – 5 p.m. Visit the website: [www.sandyspringmuseum.org](http://www.sandyspringmuseum.org)



**Klein plums at Artists & Makers Studio in Rockville.**

## NOW THRU MARCH 1

**Art Dolls: Figurative Sculptures Tell a Story.** At Sandy Spring Museum, 17091 Bentley Road, Sandy Spring. Reception: Sunday, Jan. 12, 1 p.m. – 3 p.m. This exhibit features the work of students enrolled in doll making classes at Montgomery College taught by Wendelin Daniels. The students explore mixed media art and the human form through the design and creation of original art dolls. The dolls span a wide range of persona, from portrait dolls of historical figures to fantasy dolls, and everything in between. Hours: Thursday, 10 a.m. – 8 p.m., Friday 10 a.m. – 5 p.m., Sunday 11 a.m. – 4 p.m., and the First Saturday of each month 10 a.m. – 5 p.m. Visit the website: [www.sandyspringmuseum.org](http://www.sandyspringmuseum.org)

## WEDNESDAY/FEB. 5

**Census Jobs Info Session.** 1-3 p.m. At Potomac Library, 10101 Glenolden Drive, Potomac. Learn more about available Census 2020 jobs. We offer competitive wages, flexible hours and opportunities for everyone, whether you're seeking full-time work or looking to earn extra money.

## THURSDAY/FEB. 6

**Bilingual Chinese Storytime.** 10:30 to 11 a.m. At Potomac Library, 10101 Glenolden Drive, Potomac. Come join our children's librarian for stories songs and rhymes in Chinese and English.

**Play Date at the Library.** 11-11:30 a.m. At Potomac Library, 10101 Glenolden Drive, Potomac. This is a drop-in social playtime for toddlers/preschoolers/Kindergarten and their caregivers.

**Great Decisions.** 12:30-2 p.m. At

## Thesis Exhibition

Feb. 7-27, at Artists & Makers Studio, 11810 Parklawn Dr., Suite 210, Rockville. The graduates of The Compass Atelier's Master Artist Program, Class of 2020, will have their Thesis Exhibition at Artists & Makers Studios from Feb. 7-27, 2020. This exhibition will feature the work of 21 graduating artists completed during their Thesis Year of the Master Artist Program. Opening Reception on Friday, Feb. 7 from 6-9 p.m.

Potomac Library, 10101 Glenolden Drive, Potomac. Lecture sponsored by Friends of the Library, Potomac Chapter.

**True Life Cinema Series.** 3-5 p.m. At Davis Library, 6400 Democracy Blvd., Bethesda. Watch "Souls of Black Girls: the Image of Color in the Media"—52 min "White Scripts and Black Supermen: Black Masculinities in Comic books"—55 min.

## FEB. 7-27

**Thesis Exhibition.** At Artists & Makers Studio, 11810 Parklawn Dr., Suite 210, Rockville. The graduates of The Compass Atelier's Master Artist Program, Class of 2020, will have their Thesis Exhibition at Artists & Makers Studios from Feb. 7-27, 2020. This exhibition will feature the work of 21 graduating artists completed during their Thesis Year of the Master Artist Program. Opening Reception on Friday, Feb. 7 from 6-9 p.m.

## SATURDAY/FEB. 8

**Friends of the Library Booksale.** 10 a.m. to 1 p.m. At Potomac Library, 10101 Glenolden Drive, Potomac. Used books, DVDs, and more available for children, teens, and adults. All are welcome.

**English Conversation Club.** 11 a.m. to 12:30 p.m. At Potomac Library, 10101 Glenolden Drive, Potomac. Practice English conversation in a

friendly and relaxed setting. New members are always welcome. No registration. Join us any time! For more information call 240-777-0690.

**River Road, Bethesda — A Short History of Black and White 1850-1963.** From 2-4 p.m. At Chevy Chase Library, 8005 Connecticut Ave., Chevy Chase. Special presentation by L. Paige Whitley, Montgomery County Historical Society.

**Socrates Cafe.** 4-5:30 p.m. At Davis Library, 6400 Democracy Blvd., Bethesda. Socrates Cafe is a forum for discussion. Participating in Socrates Cafe enables you to explore and discover through question and conversation.

**Mosaic Harmony 5th Annual Interfaith Concert.** 7-9 p.m. At Silver Spring United Methodist Church, 8900 Georgia Avenue, Silver Spring. Mosaic Harmony proudly presents the 5th Annual Interfaith Harmony Concert in Celebration of 2020 United Nations World Interfaith Harmony Week. Featuring performances by Adams Beat, Jayamangala, Metropolitan Washington Baha'i Chorale, Mosaic Harmony, Shir HaLev and Silver Spring UMC Choir. Free admission. Donations are being collected on behalf of UNICEF. For a complete list of programs go to: [ifcmw.org](http://ifcmw.org).

## SUNDAY/FEB. 9

**Symphony of the Potomac.** 3 p.m.



**DuPont Brass, co-writers: Anthony Daniel Jr, Jared Bailey, Isaac Bell IV, and Jake Grotticelli.**

## Live Concert

Friday/March 13, 7:30 p.m. At Bethesda Blues & Jazz Supper Club, 7719 Wisconsin Ave., Bethesda. The sixth annual Bernard/Ebb Songwriting Awards, produced by the Bethesda Arts & Entertainment District, will once again feature a live concert performed by the competition finalists. The following five songwriters will perform their original songs at the concert. One will win the \$10,000 Grand Prize and 25 hours of complimentary recording studio time at Innovation Station Music. \* DuPont Brass, D.C. Metro Area; \* Co-writers: Anthony Daniel Jr, Jared Bailey, Isaac Bell IV, Jake Grotticelli; \* Hayley Fahey, Derwood, MD; \* Select songs co-written with Austin Bello of Bristow, VA; \* Genna Matthew, Charlottesville, VA; Eric Scott, North Beach, MD; and Maimouna Youssef, Baltimore, MD. Tickets begin at \$15 and are available at [www.bethesda.org](http://www.bethesda.org) or call 301-215-6660.

At Montgomery College's Cultural Arts Center, 7995 Georgia Ave., Silver Spring. Featuring The Founders and music of Wolfgang Amadeus Mozart, Joseph Haydn, and Ludwig van Beethoven. The program will open with Mozart's Overture to Idomeneo, followed Haydn's Symphony No. 104, London. The second half features the Symphony No. 3, Eroica, by Beethoven. Advance tickets to the performance, \$15 (adults), \$5 (student/youth under 18), and \$10 (groups of 10 or more), plus a service charge, are available from [BoxOfficeTickets.com](http://BoxOfficeTickets.com) until Saturday, Feb. 8. Tickets purchased at the door are \$20 (adults), and \$5 (students with ID/youth under 18). Visit the website [mcblogs.montgomerycollege.edu](http://mcblogs.montgomerycollege.edu).

## Jud Caswell at Focus Rockville.

7:30 p.m. At Tikvat Israel Congregation, 2200 Baltimore Road, Rockville. Jud Caswell is a talented multi-instrumentalist, wielding his guitar, banjo, whistle and cittern, who crafts songs that transport from a Maine old farmhouse, the salty shore and a wood full of birdsong. Tickets are \$18 in advance at <https://www.focusmusic.org/event-3675405> and for members, \$20 at the door.

## MONDAY/FEB. 10

**RSVP/AARP Tax-Aide Program.** 10 a.m. to 5 p.m. At Davis Library, 6400 Democracy Blvd., Bethesda. RSVP/AARP Tax-Aides provide free federal and state (Maryland) tax preparation services for low-to-moderate income taxpayers who live or work in Montgomery County. <call> Monday/Feb. 10

**Dance and Laughter for Total Wellness.** 11 a.m. At Potomac Library, 10101 Glenolden Drive, Potomac. Attention Seniors! Want to stay healthy and pursue wellness while having fun?

**"Sparky and Rhonda."** 7:30 p.m. At Saint Mark Presbyterian Church, 10701 Old Georgetown Road, Rockville. Tickets: \$20 adv, \$25 door; Children & Students w ID: \$15 adv, \$20 door. Contact Institute of Musical Traditions at 301 960-3655, or visit [imfolk.org](http://imfolk.org).

## TUESDAY/FEB. 11

**Teen Writers' Club - with Neal Gillen.** 6:30-8 p.m. At Potomac Library, 10101 Glenolden Drive, Potomac. Teens ages 13-18 with a passion for writing are invited to join our Teen Writers' Club

SEE CALENDAR. PAGE 7

**We Bring the Zoo to You!**

**SQUEALS N WHEELS**  
Traveling Petting Zoo  
[www.squealsonwheels.us](http://www.squealsonwheels.us)  
301-765-0270

We are licensed by the United States Department of Agriculture and Insured

jill@squealsonwheels.us

Thursday, February 20, 7-9 pm

"We moved. Is that still aging-in-place?"

Hear from a couple who recently downsized - the what, why and how of their decision AND why it's still aging in place.

**FREE, open to all**  
Potomac Community Center, 11315 Falls Road  
Details at 240-221-1370  
[www.PotomacCommunityVillage.org](http://www.PotomacCommunityVillage.org)



PHOTO BY JOEL ALBERT

## Jazz and Jam

Sunday/Feb. 16, 2:30-5:30 p.m. At Normandie Farms Restaurant, 10710 Falls Road, Potomac. The Conservatory Classic Jazz Band opens with music with a jam session. All are welcome to sit in or just sit back and enjoy. Cost is \$10, students and jammers free.

## CALENDAR

FROM PAGE 6

### THURSDAY/FEB. 13

**Baby and Toddler Storytime.** 10:30-11 a.m. At Potomac Library, 10101 Glenolden Drive Potomac. A storytime experience for our youngest library users and their caregivers.

**Play Date at the Library.** 11-11:30 a.m. At Potomac Library, 10101 Glenolden Drive, Potomac. For preschool and kindergarten, babies and toddlers. This is a drop-in social playtime for toddlers/preschoolers/Kindergarten and their caregivers.

**Davis Jewish Book Discussion Group.** 1-3 p.m. At Davis Library, 6400 Democracy Blvd., Bethesda. Join us as we discuss books with Jewish themes. This month we will discuss "The Sunflower: On the Possibilities and Limits of Forgiveness" by Simon Wiesenthal.

### SATURDAY/FEB. 15

**Potomac English Conversation Club.** 11 a.m. to 12:30 p.m. At Potomac Library, 10101 Glenolden Drive, Potomac. Practice English conversation in a friendly and relaxed setting. New members are always welcome. No registration. Join us any time! For more information call 240-777-0690.

**Celtic Harp Solo — All Kinds of Love.** 2-3 p.m. At Potomac Library, 10101 Glenolden Drive, Potomac. In celebration of Library Lovers' Month.

**Our Voice: Music and the Black Vote Recital.** 2-3 p.m. At Chevy Chase Library, 8005 Connecticut Ave., Chevy Chase. Celebrate the historical Centennial of the 19th Amendment as this humanities-themed recital brings music, narration, and violin selections to life. Sponsored by Friends of the Library, Chevy Chase Chapter.

**Stephen Wade.** 7:30 p.m. At Saint Mark Presbyterian Church, 10701 Old Georgetown Road, Rockville. Tickets: \$30 adv, \$35

door; Children & Students w ID: \$25 adv, \$30 door. Contact Institute of Musical Traditions at 301 960-3655, or visit [imtfolk.org](http://imtfolk.org).

### SUNDAY/FEB. 16

**Waltz Dance.** 3:30-6 p.m. At Spanish Ballroom at Glen Echo Park, 7300 MacArthur Blvd., Glen Echo. The ensemble Some Assembly will provide a lively mix of folk waltzes with a few other couple dances, including Hambo, Schottische, Swing, Tango, and Polka. The 45-minute dance lesson begins at 2:45 p.m. with a half-hour introductory Waltz workshop and a more advanced move presented the last 15 minutes. Social dancing follows until 6 p.m. Admission is \$13, \$5 for full-time students with student ID. No partner required. Call Joan Koury at 202-238-0230 or Glen Echo Park at 301-634-2222, go to [www.WaltzTimeDances.org](http://www.WaltzTimeDances.org) or e-mail [info@WaltzTimeDances.org](mailto:info@WaltzTimeDances.org).

### MONDAY/FEB. 17

**The President's Own.** 7:30 p.m. At The Music Center at Strathmore, 5301 Tuckerman Lane, North Bethesda. The President's Own U.S. Marine Band will perform a special Gala concert with Grammy-winning conductor JoAnn Falletta on the podium. The concert is free, but tickets are required and will become available Jan. 20 from the Strathmore Box Office. Concert program, notes, and additional information. Visit [www.strathmore.org](http://www.strathmore.org).

### WEDNESDAY/FEB. 19

**Make a Suncatcher.** 4-5 p.m. At Potomac Library, 10101 Glenolden Drive, Potomac. Show your love for the Potomac Library during Library Lovers' Month. They'll be making tissue-paper suncatchers that you can take home and hang from your windows. All supplies will be

provided while they last. Open to all ages; children under 8 years of age must be accompanied by an adult. Free.

### FEB. 21 TO MARCH 1.

**"The Pirates of Penzance."** At F. Scott Fitzgerald Theatre, 603 Edmonston Drive, Rockville. The Victorian Lyric Opera Company presents a new take on a beloved classic, "The Pirates of Penzance." Director Amy Sullivan's Old Hollywood inspired production will dazzle and delight audiences with all the glitz and glamour of your favorite movie musicals. This fully staged production, including full orchestra, captures the spirit of vintage Gilbert & Sullivan while charting course to wow a whole new generation of opera-goers. Show times are Friday, Feb. 21 at 8 p.m.; Saturday, Feb. 22 at 8 p.m.; Sunday, Feb. 23 at 2 p.m.; Friday, Feb. 28 at 8 p.m.; Saturday, Feb. 29 at 8 p.m.; and Sunday, March 1, at 2 p.m. Tickets are \$28 adults, \$24 seniors, \$20 students with valid ID. Call the F. Scott Fitzgerald Theatre at 240-314-8690 or go to [www.vloc.org](http://www.vloc.org) to purchase tickets online.

### SUNDAY/FEB. 23

**Maximizing a Journey to One's Roots.** 1 p.m. At B'nai Israel Congregation, 6301 Montrose Road, Rockville. The Jewish Genealogical Society of Greater Washington (JGSGW) will host the program, Maximizing a Journey to One's Roots presented by Tony Hausner. In this presentation, Tony will describe how his Jewish genealogy research laid the foundation for his travels to towns in Eastern Europe where his and his wife's families lived over the past four centuries, as well as travel to his birthplace of England. Activities begin at 1 p.m. including consultations with the genealogy "mavens" followed by the program beginning at 1:30 p.m. Visit the website <https://jsggw.org/>

## Off Topic, Way Off



By KENNETH B. LOURIE

From cancer to toilet paper. Is that 'off' enough? My reason for writing this column might be because I need a diversion (see last week's column), and because, as is so happened recently, I needed to replenish our toilet paper supply. (It had nothing to do with a winter advisory in the forecast.) As the consumer in the house, I am keen and motivated to spend our money wisely. I look for sales, I use paper coupons, I use digital coupons and of course, I peruse the advertising circulars, in print and online (if necessary) regularly. In addition, I have a number of plastic bonus cards hanging on my keychain. In short, I am prepared and ready for any retail or wholesale opportunity that might present itself.

With respect to toilet paper, I believe us regular users have been victimized by the toilet paper manufacturers. I refer specifically to the increase in the size of the actual roll itself; from single to double to triple to jumbo to mega and now super mega. Since the manufacturers can't exactly increase demand, they've devised a strategy to increase supply - in our homes. And though using myself as an example is hardly empirical evidence, I will nonetheless continue to do so in an effort to justify my accusation.

If you're like me, you probably like to have an ample supply of toilet paper in the house, just in case (it happened once in college; not good). And to that end, the toilet paper manufacturers have offered up multipacks equivalent to as high as 96 rolls, if I'm not mistaken, to address this potential shortage. However, my beef is not with the number of rolls in these multipacks, my beef, as I've said, is with the size of the rolls. In these cases, size does matter.

For years, we've been buying 4-, 6-, 9-, 12-, 24-, 36- and even 48-roll multipacks, some single and some double to stock the bathroom linen closets, so we're used to having a specific number of rolls on hand/in inventory. Now the rolls are double or even triple the size we had grown accustomed to having as back-ups. But we're still, in spite of the gargantuan size of the newer mega/super mega rolls, wanting to have the same number of rolls in the closet as we've always had (I do, anyway). Sort of a comfort level, you might say. The problem is that having the same number of super mega rolls in inventory as previously one had as single or double rolls gives one way more toilet paper in the house than you ever had. In effect, we have over-purchased. The toilet paper manufacturers have used our predispositions against us in order to take a greater share of our household budget previously allocated for toilet paper.

I don't need six super mega rolls in our bathroom. But I do want to see at least six rolls in reserve (aid and comfort you might say). If the six rolls in reserve were single or doubles, their size would be irrelevant. The number of rolls was more important - in my head. And now, because of the toilet paper manufacturer's insistence that size matters, I am forced to buy these spare-tire, donut-sized rolls that I can't possibly use no matter what "snowmageddon" might hit us. But I can't stock my shelves with reasonably-sized rolls because their unit cost is prohibitive compared to the big roll multipacks. As the consumer I am, I am loathe to overpay for such household necessities. So I buy in bulk, stuff my shelves with ply and go about my business. I just wish I had more than a hand in their decision-making.

*Kenny Lourie is an Advertising Representative for The Potomac Almanac & The Connection Newspapers.*

# POTOMAC ALMANAC

[www.PotomacAlmanac.com](http://www.PotomacAlmanac.com)

Newspaper of Potomac  
A Connection Newspaper

An independent, locally owned weekly newspaper delivered to homes and businesses.

1606 King Street  
Alexandria, Virginia 22314

Free digital edition delivered to your email box. Go to [connectionnewspapers.com/subscribe](http://connectionnewspapers.com/subscribe)

### EDITOR & PUBLISHER

Mary Kimm  
[mkimm@connectionnewspapers.com](mailto:mkimm@connectionnewspapers.com)  
[@MaryKimm](https://twitter.com/MaryKimm)

### EDITORIAL

PHONE: 703-778-9415

### E-MAIL:

[almanac@connectionnewspapers.com](mailto:almanac@connectionnewspapers.com)

### PRODUCTION EDITOR

Jean Card  
[jcard@connectionnewspapers.com](mailto:jcard@connectionnewspapers.com)

### CONTRIBUTING WRITERS

Susan Belford, Carole Dell, Cissy Finley Grant, Carole Funger, Colleen Healy, Kenny Lourie, Peggy McEwan, Ken Moore

### Contributing Photographers

Harvey Levine, Deborah Stevens

### Art/Design:

Laurence Foong, John Heinly, Ali Khaligh

### Production Manager

Geovani Flores

### ADVERTISING

For advertising information  
[sales@connectionnewspapers.com](mailto:sales@connectionnewspapers.com)  
703-778-9431

### Display Advertising:

Kenny Lourie 301-325-1398  
[klourie@connectionnewspapers.com](mailto:klourie@connectionnewspapers.com)

### Debbie Funk

National Sales & Real Estate  
703-778-9444  
[debfunk@connectionnewspapers.com](mailto:debfunk@connectionnewspapers.com)

### David Griffin

Marketing Assistant  
703-778-9431  
[dgriffin@connectionnewspapers.com](mailto:dgriffin@connectionnewspapers.com)

### Jerry Vernon

Executive Vice President  
703-549-0004  
[jvernon@connectionnewspapers.com](mailto:jvernon@connectionnewspapers.com)

### CIRCULATION

[circulation@connectionnewspapers.com](mailto:circulation@connectionnewspapers.com)

Potomac Almanac is published by Local Media Connection LLC

### Five Time First Place Award-Winner Public Service

MDDC Press Association

### Four Time Newspaper of the Year

An Award-winning Newspaper in Writing, Photography, Editing, Graphics and Design

# Potomac REAL ESTATE

PHOTOS BY DEB STEVENS/THE ALMANAC

## November, 2019 Sales, \$865,000~\$1,025,000

IN NOVEMBER 2019, 43 POTOMAC HOMES SOLD BETWEEN \$2,000,000-\$540,000.



**4** 8716 Cold Spring Road — \$955,000



**5** 11909 Tallwood Court — \$935,000



**2** 9800 Brookford Road — \$1,024,000



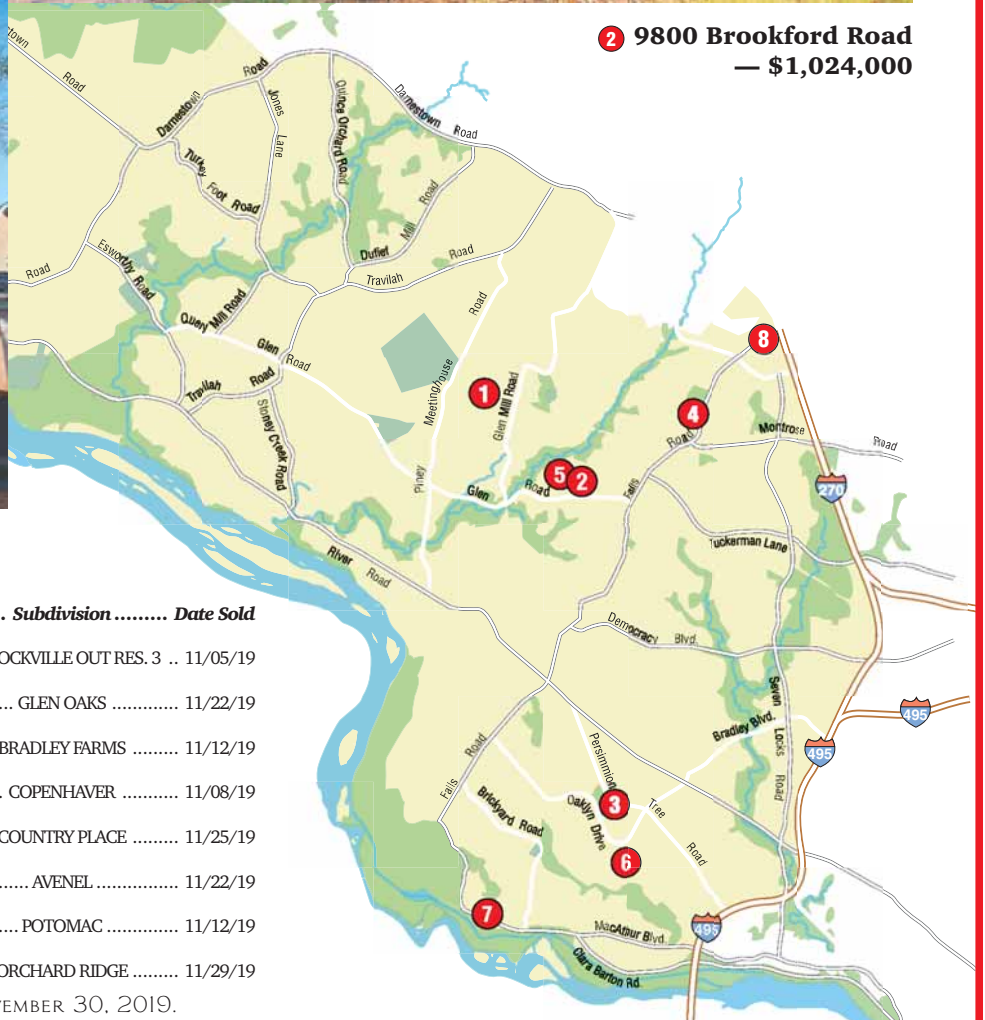
**3** 8811 Persimmon Tree — \$1,000,000



**6** 8302 Turnberry Court — \$925,000



**7** 10605 MacArthur Boulevard — \$898,000



Address	BR	FB	HB	Postal City	Sold Price	Type	Lot AC	Postal Code	Subdivision	Date Sold
10508 WHITE CLOVER TER	4	3	1	POTOMAC	\$1,025,000	Detached	2.02	20854	PT ROCKVILLE OUT RES. 3	11/05/19
9800 BROOKFORD RD	4	3	2	POTOMAC	\$1,024,000	Detached	0.38	20854	GLEN OAKS	11/22/19
8811 PERSIMMON TREE	4	3	1	POTOMAC	\$1,000,000	Detached	2.73	20854	BRADLEY FARMS	11/12/19
8716 COLD SPRING RD	5	3	1	POTOMAC	\$955,000	Detached	0.35	20854	COPENHAVER	11/08/19
11909 TALLWOOD CT	6	3	1	POTOMAC	\$935,000	Detached	0.34	20854	COUNTRY PLACE	11/25/19
8302 TURNBERRY CT	4	3	1	POTOMAC	\$925,000	Townhouse	0.08	20854	AVENEL	11/22/19
10605 MACARTHUR BLVD	4	3	1	POTOMAC	\$898,000	Detached	0.55	20854	POTOMAC	11/12/19
1028 WILLOWLEAF WAY	5	4	1	ROCKVILLE	\$865,000	Detached	0.25	20854	ORCHARD RIDGE	11/29/19

COPYRIGHT 2019 MARKETSTATS FOR SHOWINGTIME. SOURCE: BRIGHT MLS AS OF NOVEMBER 30, 2019.