

# Potomac ALMANAC

REAL ESTATE, PAGE 2 ♦ HOMELIFESTYLE, PAGE 5 ♦ KENNY LOURIE, PAGE 7

PHOTO BY MARY KIMM

## Beaver Are Busy in Winter

NATURE, PAGE 6

## 2022 Begins With Snow and A Covid Surge

PAGES 3 AND 4

The snow that fell on Jan. 3 was beautiful, more so if you were indoors looking out and your electricity was uninterrupted.

JANUARY 12-18, 2022

ONLINE AT [POTOMACALMANAC.COM](http://POTOMACALMANAC.COM)





2 14401 Pettit Way — \$1,553,000

September, 2021 Sales,  
\$1,585,000~\$1,405,000



1 12513 Noble Court  
— \$1,585,000

IN SEPTEMBER, 2021, 61 POTOMAC HOMES  
SOLD BETWEEN \$4,900,000-\$357,500.



8 11601  
Montague Court  
— \$1,465,000



3 10200  
Counselman Road  
— \$1,500,000



7 9912  
Hall Road  
— \$1,425,000



5 9917  
Sorrel Avenue  
— \$1,465,000



Address.....	BR	FB	HB	Postal City.....	Sold Price...	Type.....	Lot AC.	Postal Code ...	Subdivision.....	Date Sold
1 12513 NOBLE CT.....	6...	5...	1	POTOMAC	\$1,585,000	Detached..	2.00.....	20854.....	PALATINE .....	09/03/21
2 14401 PETTIT WAY .....	6...	6...	3	POTOMAC	\$1,553,000	Detached..	4.89.....	20854.....	RIVERWOOD .....	09/15/21
3 10200 COUNSELMAN RD ...	5...	4...	3	POTOMAC	\$1,500,000	Detached..	0.60.....	20854.....	POTOMAC VILLAGE.	09/13/21
4 12440 BACALL LN.....	6...	4...	1	POTOMAC	\$1,490,000	Detached..	2.00.....	20854.....	STONEY CREEK ESTS	09/03/21
5 9917 SORREL AVE.....	5...	4...	1	POTOMAC	\$1,465,000	Detached..	0.42.....	20854.....	POTOMAC VILLAGE.	09/21/21
6 7823 CADBURY AVE.....	4...	3...	2	POTOMAC	\$1,439,000	Townhouse	0.05.....	20854.....	PARK POTOMAC....	09/07/21
7 9912 HALL RD .....	4...	4...	1	POTOMAC	\$1,425,000	Detached..	0.36.....	20854.....	POTOMAC VILLAGE.	09/07/21
8 11601 MONTAGUE CT.....	4...	4...	1	POTOMAC	\$1,405,000	Detached..	0.30.....	20854.....	CLAGETT FARM.....	09/10/21

COPYRIGHT 2021 MARK ETSTATS FOR SHOWINGTIME. SOURCE: BRIGHT MLS AS OF SEPTEMBER 30, 2021  
HTTP://WWW.CONNECTIONNEWSPAPERS.COM/NEWS/2021/OCT/29/POTOMAC-HOME-SALES-SEPTEMBER-2021/



# Covid Surges as the Year Begins

## Where To Get Test Kits

**K**it pickup is inside each library. You might enter at a side entrance. If you come early, you may wait outdoors. The line moves fast. If you need support, please ask a site attendant.

Residents can get two kits per person per visit. Each kit contains two tests.

We have a limited supply of kits per site. We have resupply on the way.

Monday to Saturday,

11 a.m. to 2 p.m.

CLOSED Monday,

January 18, for the

Martin Luther King, Jr. holiday  
Starting Tuesday, January 19: 12

p.m. to 2 p.m.

❖ **Chevy Chase Library**

8005 Connecticut Avenue,  
Chevy Chase, MD 20815

❖ **Damascus Library**

9701 Main Street,  
Damascus, MD 20872

❖ **Davis Library**

6400 Democracy Boulevard,  
Bethesda, MD 20817

❖ **Gaithersburg Library**

18330 Montgomery Village Avenue,  
Gaithersburg, MD 20879

❖ **Little Falls Library**

5501 Massachusetts Avenue,  
Bethesda, MD 20816

❖ **Potomac Library**

10101 Glenolden Drive,  
Potomac, MD 20854

❖ **Silver Spring Library**

900 Wayne Avenue,  
Silver Spring, MD 20910

❖ **White Oak Library**

11701 New Hampshire Avenue,  
Silver Spring, MD 20904

Check online for more.

## Town Hall on

## Schools Draws 5,000

Councilmember Tom Hucker pulled together an Emergency Virtual Town Hall on Schools on Sunday, Jan. 9. Hucker held the town hall meeting in response to hundreds of constituents who contacted him last week about Montgomery County Public Schools' Covid-19 safety measures, learning conditions, operational challenges and concerns for student well-being. "My office received over 600 messages last Friday alone asking for urgent action," Hucker said.

More than 5,000 people tuned in on Zoom and Facebook to watch live and more than 200 people requested to speak.

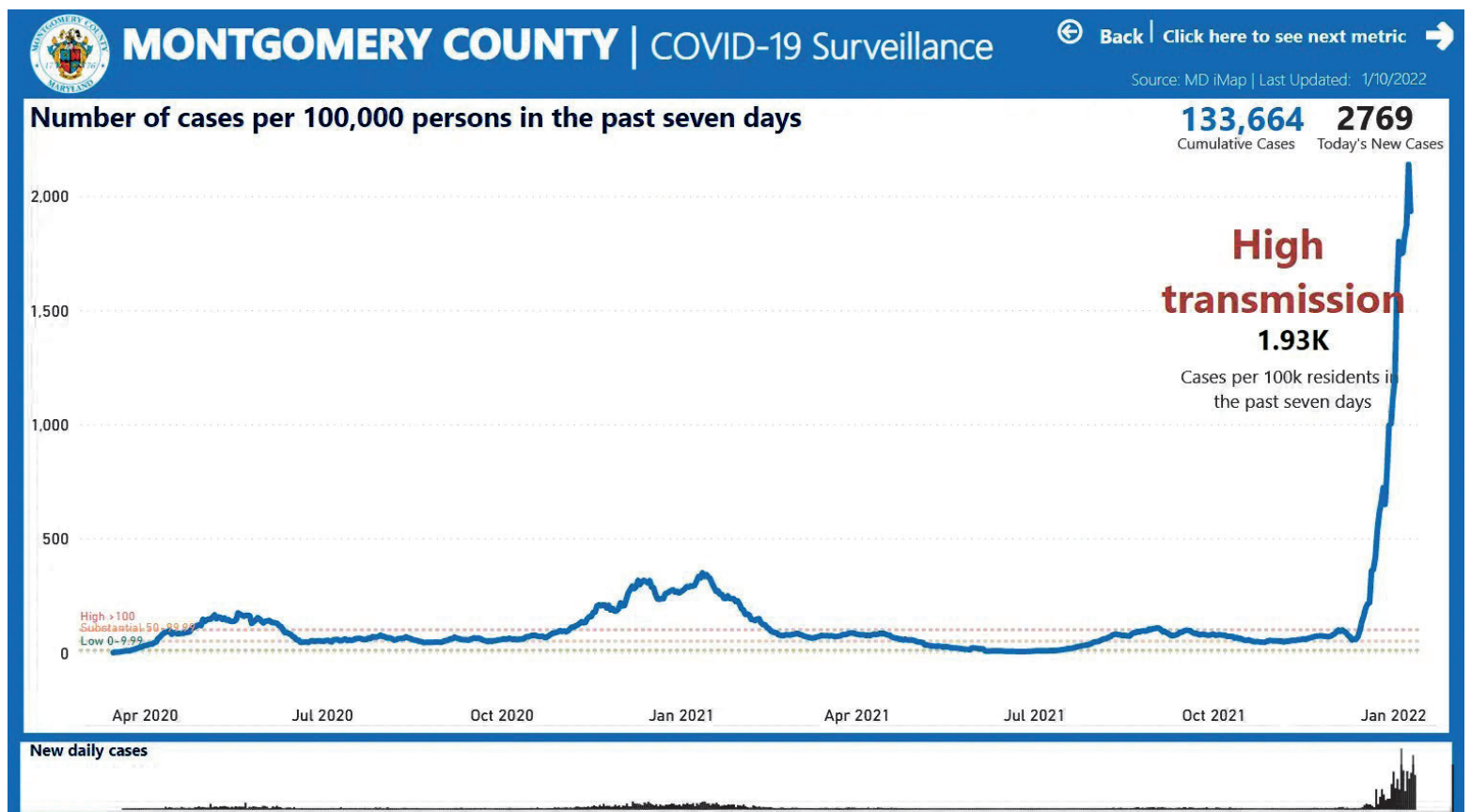
You can access the recording here [https://www.facebook.com/watch/live/?ref=watch\\_permalink&v=1036397957207065](https://www.facebook.com/watch/live/?ref=watch_permalink&v=1036397957207065)

While the Montgomery County Council does not have direct au-  
[WWW.CONNECTIONNEWSPAPERS.COM](http://WWW.CONNECTIONNEWSPAPERS.COM)



PHOTOS BY KEN MOORE/THE ALMANAC

Potomac Community Library was swamped on Monday and Tuesday with people seeking the free home covid test kits that were being handed out. On Monday, people lined up in the cold up around the corner and up the block. Tuesday, supplies were exhausted, and people were told to check back again the next day, starting at 11 a.m.



There were 2,769 new Covid-19 cases reported Jan. 10 in Montgomery County.

thority over Montgomery County Public Schools, here are the actions Hucker said he would take:

We compiled all the questions and comments we received from attendees and speakers, and shared them with County leaders, including those who have decision-making authority over our public schools: MCPS leadership, Board of Education members, the Department of Health and Human Services and the County Executive. To protect any individuals who did not want their identity disclosed, we did not share names or contact information.

I am calling on MCPS to take action to urgently address the critical concerns that were expressed during the town hall. They should:

Require negative tests to return to school this week;

Clarify what the standards are for creating a safe and adequate learning environment in schools, including necessary personnel like teachers, substitutes, bus drivers, school nurses, support staff and building service workers;

Work with the State on an opt-out COVID-19 testing strategy for parent notification, rather than an opt-in system;

Now that tests are being widely distributed at libraries and other locations, provide testing on site for all staff and students who request it; and

Explain why MCPS has not chosen a two-week pause with virtual instruction during the peak of virus

spread to ensure there are enough MCPS staff available to transport students to school, teach students, serve meals and support the well-being of students. Also so students who are staying safe at home due to being sick with COVID, exposed to COVID or to not expose vulnerable family members, aren't left behind.

## MASKS REQUIRED AGAIN

The Montgomery County Council, acting as the County Board of Health, earlier this week approved an amended Board of Health regulation to prevent the spread of COVID-19 and to update indoor masking guidance in the County. The new regulation continues indoor mask requirements at any

location accessible to the public in Montgomery County until 11.59 p.m. on Jan. 31.

The Council will meet as the Board of Health every two weeks to evaluate the public health data associated with community transmission of COVID-19 to determine if the indoor mask mandate should continue.

The COVID-19 omicron variant has pushed Montgomery County and other areas of the country into an extended period of high COVID-19 transmission. Consequently, Acting Health Officer James Bridgers requested that the Council, sitting as the Board of Health, rescind the automatic termination of the indoor mask mandate.



WINTER

# 2022 Begins with Snow

PHOTOS BY MARY KIMM



Whiteout conditions with very wet snow.



Potomac Goldfinches in the snow, sticking close to feeders they know.



It was perfect snowman building snow.



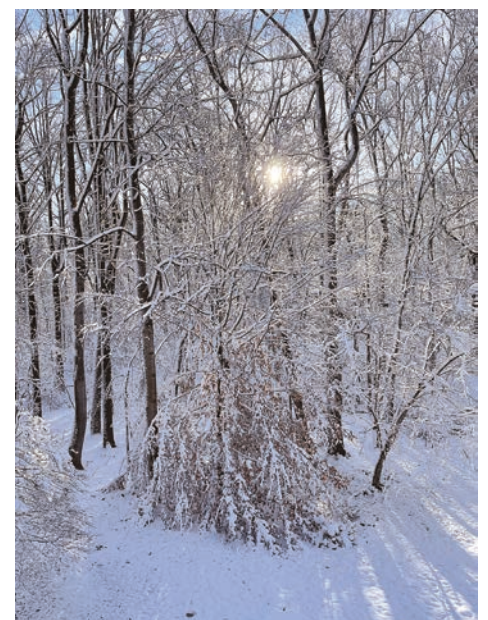
Mourning dove hunkered down in the snow.



It's been more than a year since there was snow enough for good sledding.



How much snow did you get?



Sun shining through the snow.



## Veri Peri 2022 Color of the Year

Described blue with red-violet undertones, the hue is expected to be on trend this year.

BY MARILYN CAMPBELL  
THE ALMANAC

Those home accessories or planning a whole-house remodeling project or simply looking to purchase home accessories will have a new color option. Described as a shade of blue with violet-red undertones, Very Peri is Pantone's 2022 Color of the year. The hue, which is expected to be on trend in products that range from home furnishings to runway fashion, is getting mixed reviews from local designers.

"Very Peri isn't a color that I would choose often, or recommend to clients frequently, but I can see why some people would love it," said McLean designer Ashley Hollings,

"I may be in the minority, but I think it's a beautiful color," said North Potomac designer Dana Wiseman of Wiseman Designs. "However, I don't think I'd recommend it to a client. It's a bit too dark for an interior."

"As a purple with a blue edge, Veri Peri is cold and bold," said Annie Elliott of Bossy Color and Annie Elliott Design "It's a strong, impressive color, but it isn't welcoming and that's the number one word my clients use when describing their ideal home."

There are those aren't afraid to embrace it, says Cathy McNamara of Dream Interiors in Alexandria. "I'm seeing an uptick in the number of homeowners and designers who are taking risks. Veri Peri is definitely risky," she said. "This was once a color that was only used as an accent, but more and more of my clients are choosing bold colors for whole rooms."

Those who find the color appealing, but want to use it with caution. Veri Peri can add a burst of vibrancy to a neutral interior.

"As a solid color, it would look great on lamps or a quilt in a crisp white bedroom," said Elliott. "It would be a dramatic accent color in an extremely contemporary home, and the only accent color, possibly. It would be effective as a splash of color on pillows, vases, and art."

Though considered by designers to be a vivid hue, Veri Peri can be paired with colors to increase or subdue its vibrancy. "You can pair it with neutral colors like beige or white to balance the shade and provide a calming, comforting effect," said interior designer

WWW.CONNECTIONNEWSPAPERS.COM



PHOTO BY ANNIE ELLIOTT

Very Peri, color of the year for 2022, is expected to be prevalent in home furnishings such as the sofa in this room which was designed by Annie Elliott of Annie Elliott Design.



PHOTO BY ANNIE ELLIOTT

Annie Elliott of Bossy Color and Annie Elliott Design says Very Peri, color of the year for 2022, can be integrated into a splash of color on pillows, vases, and art.

**"I think Pantone picks wild colors on purpose to spark some conversation. If they picked a boring beige no one would talk about it."**

— Ashley Hollings, interior designer

Michelle Zimmerman of Potomac.

"If you want to make more of a statement, pair it with oranges or yellows, which makes the purple hue pop and appear more vivid," continued Zimmerman. "They're complementary and will create a bold statement."

"To tone down the boldness of Veri Peri, I

would pair it with adjacent colors such as red, burgundy, and navy blue," added Elliott. "The cleverest thing about Veri Peri from an interior design perspective is that it will look great with cool gray."

For the past 23 years, experts from the Pantone Color Institute forecasts global color trends and select a Color of the Year.

"I think Pantone picks wild colors on purpose to spark some conversation," said Hollings. "I mean if they picked a boring beige no one would talk about it."

**Like to help others?**



Potomac  
Community  
Village

Volunteer with us. Meet new neighbors. It's all about helping Potomac seniors remain in their homes as they age.

to learn more or to volunteer:

info@PotomacCommunityVillage.org  
240-221-1370

## We Need Your Help Again

We are sincerely grateful and thankful to you for helping in 2021 to save one of America's oldest newspapers, the Alexandria Gazette Packet, publishing continuously since 1784

Alexandria  
Gazette Packet  
Publishing Since 1784

And affiliated newspapers

THE  
CONNECTION  
Newspapers & Online

Mount Vernon Gazette  
Potomac  
ALMANAC  
CENTRE VIEW

Visit [connectionnewspapers.com](https://www.connectionnewspapers.com) or  
<https://www.gofundme.com/f/help-keep-your-newspaper-printing>

Connection Newspapers.... Alexandria Gazette Packet, Mount Vernon Gazette, Centre View, Potomac Almanac  
1606 King Street • Alexandria, VA • 703-778-9431

POTOMAC PIZZA  
[www.potomacpizza.com](http://www.potomacpizza.com)



CHEVY CHASE COLLEGE PARK MIDDLE RIVER POTOMAC TRAVILLE

**ALWAYS  
FREE  
DELIVERY!**

**. CURBSIDE PICK UP .**

**. CONTACT-FREE DELIVERY .**



# Beaver Stay Busy in the Winter

BY GLENDA C. BOOTH  
THE ALMANAC

**“Y**ou have beavers here?” National Public Radio journalist Sabri Ben-Achour asked incredulously when he visited Dyke Marsh a few years ago, not expecting them in Northern Virginia’s suburbs. The answer is yes, and there are beavers around Mason Neck and in Huntley Meadows Park too. Beavers live in or around ponds, rivers, marshes and lakes.

Because much aquatic vegetation is dormant, beaver lodges are more visible in winter than in other times of the year. The lodges are typically rounded stacks of logs, sticks, mud and vegetation that protrude from the water. They have two underwater entrances. Freshly-gnawed trees are also sure signs of beavers. They cut down trees to build dams and lodges with their strong teeth.

As for spotting a beaver, they are mostly active at night so few people see them. The best time is at dusk or sunrise. They are active year-round and do not hibernate.

## “Engineers”

North America’s largest rodents, beavers (*Castor canadensis*) are dark brown mammals with long incisors, short legs, webbed feet and a long, flat, scaly tail. They can dig and grasp tree limbs with their claws. They are three to four feet long including the tail and typically weigh 40 to 50 pounds. Some can weigh up to 80 pounds. They primarily eat herbaceous vegetation, woody and aquatic plants.

Beavers breed in the winter and live in family groups or colonies. Their young are born in May and June. They have a home range size of eight acres, according to state wildlife experts.

Known as “nature’s engineers,” beavers build dams and lodges with the trees they cut down. The result can be viewed positively or negatively, depending on how or whether people want to use the land. The ponds formed by beaver dams provide habitat for waterfowl, reptiles, amphibians and aquatic insects. Ponds can filter pollution and help control flooding. They can also flood crop and timberland, roads and backyards.

If there are leaks in the dams, they will patch them with mud, sticks and brush. Their industriousness in building and repairing dams may be the origin of the terms “busy as a beaver” and “eager beaver.”

## “Local” Beavers

Most public land managers hesitate to estimate how many beavers or lodges are around.

At Huntley Meadows Park, “We do not



PHOTO BY RANDY STREUFERT

A beaver eating the bark off a tree branch.



PHOTO BY RANDY STREUFERT

A beaver swimming.



PHOTO BY GLENDA BOOTH

A beaver lodge in Dyke Marsh.



PHOTO BY GLENDA BOOTH

Beaver can cut down trees with their strong teeth, this one in Dyke Marsh.



PHOTO BY RANDY STREUFERT

An unusually good look at a beaver’s tail.

know how many beavers or lodges are within the park,” says Karen Sheffield, the park’s manager. “The largest and most visible lodge can be seen from the boardwalk during the winter months, if you know where to look.”

When the Fairfax County Park Authority acquired the park’s land in 1975, Barnyard Run was an intermittent stream. In 1977,

beavers dammed the stream and created the central, freshwater wetland. In the 1970s and 1980s, the park’s wetland was around half open water and half vegetated wetland, productive and diverse. Silt began coming in in stormwater runoff in the late 1980s and the beavers, nomadic animals, moved out. After many years of deliberation and public meetings, park managers decided to restore the marsh and artificially manage water levels, a project completed in 2014. The control system is a 500-foot-long, three-foot-high earthen berm with metal slide gates.

On Mason Neck, there is one large beaver lodge clearly visible at the state park on the Bay View Trail and likely others further inland and in Kane’s Creek. “Beavers have been active in the Little Marsh part of the Elizabeth Hartwell Mason Neck National Wildlife Refuge for many years,” says Ran-

dy Streufert, a board member of the Friends of Mason Neck State Park. A lodge is also visible from the Great Marsh Trail viewing platform.

For many years, beavers maintained a dam and lodge in the part of Dyke Marsh behind the River Towers Condominiums, but they moved on several years ago, as is their wont. Since the beavers left, more cattails and wild rice have moved in, plants that grow in shallow water.

The Virginia Department of Wildlife Resources’ website says that beavers are likely present in every Virginia county. People have seen them in Alexandria and Arlington over the years.

By the mid-1800s, beavers were effectively extirpated from much of their eastern U.S. range because of the fur trade. People made their soft pelts into coats or hats, shipping many to Europe. Today, Virginia manages beavers as a game species.

“Beavers pose little threat to humans, their property or pets,” according to Fairfax County’s website.

For more information, visit <http://www.dgif.virginia.gov/wildlife/information/?s=050069>

<https://www.fairfaxcounty.gov/wildlife/beaver>



## Sportsbook Facilities Contribute \$469,000 To the State in First Month of Operations

Maryland's first five sports wagering facilities opened for business during December 2021 and contributed \$469,297 to the Blueprint for Maryland's Future Fund, which supports a variety of public education programs. Each sports wagering licensee contributes 15% of its taxable win to the state.

Details on each facility's handle, hold percentage, taxable win, prizes, promotional play and contribution to the State of Maryland are available online (CLICK HERE).

Here are the statewide sports wagering totals for December 2021:

Handle (The amount players wagered, including promotion-

al wagers provided to players by sportsbooks): \$16,552,430

Prizes (Winnings paid to players): \$13,382,430

Hold (Handle less prizes paid): \$3,170,000, or 19.2%

Taxable Win (Amount remaining after paying winners and deducting promotional play and other amounts): \$3,128,660

Sports Wagering Tax (15% of the taxable win): \$469,297

The five sports wagering facilities operating in December. MGM National Harbor (opened Dec. 9); Live! Casino & Hotel (opened Dec. 10); Horseshoe Casino (opened Dec. 10); Ocean Downs Casino (opened Dec. 17); and Hollywood Casino (opened Dec. 23). Additional facilities are expected to open in

the near future.

Maryland Lottery and Gaming operates the Maryland Lottery and is responsible for regulatory oversight of the state's casinos and sports wagering program. In this role, the agency provides direction and guidance to its casino and sports wagering partners on financial, security, regulatory and licensing procedures. To keep Marylanders informed and to maintain transparency of casino and sports wagering operations, monthly financial reports are posted on mdgaming.com. Maryland Lottery and Gaming r

eminds players to play responsibly and within their budget; resources are available at mdgamblinghelp.org or by calling 1-800-426-2537.

### BULLETIN BOARD

Submit civic/community announcements at ConnectionNewspapers.com/Calendar. Photos and artwork welcome. Deadline is Thursday at noon, at least two weeks before event.

#### SATURDAY/JAN. 15

Pressenda Chamber Players. 8 p.m. At Westmoreland Church, One Westmoreland Circle, Bethesda. The concert includes Haydn Quartet Op. 33 no. 2, the last movement of Phillip Glass "Mishima" Quartet, and Brahms Viola Quintet in F Major. An ensemble of shifting combinations of strings and piano, The Pressenda Chamber Players was founded by Artistic Director and cellist, Tobias Werner.

#### 'KIDS DAY OUT' SCHEDULED

Montgomery County Recreation will have special programs to keep children active when Montgomery County Public Schools has scheduled days off. "Kids Day Out" will offer full-day programming from 8:30 a.m. to 4 p.m. on Monday, Jan. 24, and Tuesday, Feb. 1. Half-day programming will be available from 1:30-6:30 p.m. on Wednesday, Jan. 12, which is a MCPS half-day off from school.

Kids Day Out, a partnership with MCPS, provides out-of-school supervised recreation program. The well-rounded interactive activities emphasize health, physical fitness, imagination and fun.

The half-day program is \$25 and the full-day programs are \$50 for each day.

Programs will take place at the following community recreation centers:

Damascus Community Recreation Center  
East County Community Recreation Center

Germantown Community Recreation Center  
Good Hope Neighborhood Recreation Center  
Jane L. Lawton Community Recreation Center  
Marilyn J. Praisner Community Recreation Center  
Mid-County Community Recreation Center  
North Potomac Community Recreation Center  
Potomac Community Recreation Center  
Plum Gar Community Recreation Center  
Upper County Community Recreation Center  
Wheaton Community Recreation Center  
White Oak Community Recreation Center  
Middle School programming will be available at:  
Mid-County Community Recreation Center  
Plum Gar Community Recreation Center  
Wheaton Community Recreation Center

#### LIBRARIES TO DELAY RESTORATION OF SUNDAY HOURS

Montgomery County Public Libraries will delay the restoration of Sunday branch service hours that was scheduled to take place effective Jan. 2 due to the increased spread of COVID-19 and the Omicron variant. The hours of operation at all MCPL branches, except Maggie Nightingale (Poolesville) and Noyes Library for Young Children, as of Jan. 3, will be as follows:

Monday, Tuesday, Wednesday, Thursday - 10 a.m. to 8 p.m.

Friday, Saturday- 10 a.m. to 6 p.m.

The hours and schedule for Maggie Nightingale (currently closed for refresh) and Noyes libraries will remain as they currently stand.

For more information on MCPL services, visit <https://montgomerycountymd.gov/library/>.

## POTOMAC ALMANAC

[www.PotomacAlmanac.com](http://www.PotomacAlmanac.com)

Twitter @PotomacAlmanac

Newspaper of Potomac  
A Connection Newspaper

An independent, locally owned weekly newspaper delivered to homes and businesses.

1606 King Street  
Alexandria, Virginia 22314

Free digital edition delivered to your email box. Go to [connectionnewspapers.com/subscribe](http://connectionnewspapers.com/subscribe)

#### EDITOR & PUBLISHER

Mary Kimm  
[mkimm@connectionnewspapers.com](mailto:mkimm@connectionnewspapers.com)  
@MaryKimm

#### EDITORIAL

E-MAIL:  
[almanac@connectionnewspapers.com](mailto:almanac@connectionnewspapers.com)

#### CONTRIBUTING WRITERS

Carole Dell, Kenny Lourie,  
Ken Moore

#### Contributing Photographers

Deborah Stevens, Carole Dell

#### Art/Design

Laurence Foong

#### Production Manager

Geovani Flores

#### ADVERTISING

For advertising information  
[sales@connectionnewspapers.com](mailto:sales@connectionnewspapers.com)  
703-778-9431

#### Debbie Funk

Display Advertising/National Sales  
703-778-9444  
[debfunk@connectionnewspapers.com](mailto:debfunk@connectionnewspapers.com)

#### David Griffin

Marketing Assistant  
703-778-9431  
[dgriffin@connectionnewspapers.com](mailto:dgriffin@connectionnewspapers.com)

#### Jerry Vernon

Publisher  
703-549-0004  
[jvernon@connectionnewspapers.com](mailto:jvernon@connectionnewspapers.com)

#### CIRCULATION

[circulation@connectionnewspapers.com](mailto:circulation@connectionnewspapers.com)

Potomac Almanac is published by Local Media Connection LLC

Five Time First Place  
Award-Winner  
Public Service  
MDDC Press Association

Four Time  
Newspaper of the Year  
An Award-winning Newspaper  
in Writing, Photography, Editing,  
Graphics and Design

## So Long Old Memory



By KENNETH B. LOURIE

As of Wednesday, Dec. 8, the 2000 Honda Accord, which I inherited from my widowed mother 13 years ago, nearly to the day, was officially "totaled" by an insurance adjuster. After my mother died in 2008 leaving the Honda ownerless, I took possession. As I recall, on Dec. 24, 2008, I went to the Montgomery County administrative offices in Rockville and paid my dues (taxes, actually). And though I've had miscellaneous car repairs over the years - fortunately, nothing which was too drastic or expensive, I've not had to make one monthly car payment in almost 13 years. For a non-car person like me, not having a car payment for that many years trumps all negative considerations.

As written about in the "Oh Deer" column a few weeks back, the end of our association (the Honda and mine) was unexpected and for my money - literally, quite unnecessary. The Honda was our back-up/second car. Maybe it was driven 5,000 miles a year, almost exclusively local and most often, it sat in the driveway minding its own business. Now, I'll have to upgrade and consequently incur a new monthly car payment. A car payment I don't want and an extra expense I certainly don't need. Though I'll be receiving a settlement check from the insurance company, it won't cover the cost of a new car. In fact, it will barely cover the amount of down payment. And as any of you similarly impacted by a car accident where your car is "totaled" know, the math rarely ends up in your favor, especially if the "totaled" car was old and payment free.

But more to the point if this column. The Honda was one of the last remaining physical links to my parents, particularly my father, who died in early December 2006. He was the driver in the family and the Honda was the only car in the family so most images and feelings I have about my father and a car were from this 2000 Honda Accord, the last car he owned/drove. As such, when I sit in the driver's seat, I remember my father. And I also remember the front of one of his birthday cards which said: "When they made you, they broke the mold." Open card: "You should see what they did to the mold maker." We all laughed. I gave him that card on his 65th birthday dinner which we all celebrated at Jimmy's Harborside Restaurant (his favorite) on the wharf in Boston on or about Sept. 23, 1984 (his actual birthday). It was a memorable occasion to be sure, especially when my father opened the card and shook it to see if any money would fall out.

And though I still have lots of enduring memories of my father (I still wear his winter gloves as well as an old collard short-sleeve Polo shirt of his - which amazingly sort of fits), nothing conjures his memory and is so physically enveloping - literally, as the front seat of the car where when driving, he spent the last years of his life. And now that feeling/his presence is gone.

I imagine I'll get reconnected to his memory every month for the next 36 at least, when I make my new car payment. It won't quite be the same as sitting in the Honda payment free. Nevertheless, I'm sure I'll still feel a car connection to my father. After all, I'll be driving a car that he helped me buy.

Kenny Lourie is an Advertising Representative for The Potomac Almanac & The Connection Newspapers.

### We Bring the Zoo to You!



# SQUEALS

# N WHEELS

## Traveling Petting Zoo

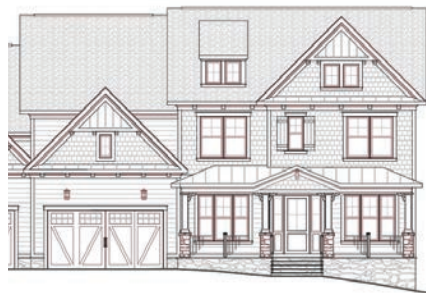
[www.squealsonwheels.us](http://www.squealsonwheels.us)

301-765-0270

We are licensed by the United States Department of Agriculture and Insured

[jill@squealsonwheels.us](mailto:jill@squealsonwheels.us)





**LUXMANOR** \$2,995,000  
6315 Tilden Lane  
Rockville, MD  
**Marsha Schuman 301-943-9731**  
**Betsy Schuman Dodek 301-996-8700**



**THE PALISADES** \$2,575,000  
6712 Vendome Terrace  
Bethesda, MD  
**Lisa Stransky 202-368-6060**



**AVENEL** \$2,050,000  
9646 Eagle Ridge Drive  
Bethesda, MD  
**Nancy Itteilag 202-905-7762**



**BURNING TREE ESTATES** \$1,975,000  
7520 Arrowood Road  
Bethesda, MD  
**Marsha Schuman 301-943-9731**  
**Betsy Schuman Dodek 301-996-8700**



**CHEVY CHASE VILLAGE** \$1,823,000  
5606 Montgomery Street  
Chevy Chase, MD  
**Liz Lavette Shorb 301-785-6300**



**RIVER FALLS** Offered at \$1,425,000  
8518 Brickyard Road  
Potomac, MD  
**Anne Killeen 301-706-0067**



**POTOMAC** Offered at \$1,380,000  
10605 Riverwood Drive  
Potomac, MD  
**Anne Killeen 301-706-0067**



**RIVER FALLS** Offered at \$1,298,000  
7807 Gate Post Way  
Potomac, MD  
**Anne Killeen 301-706-0067**

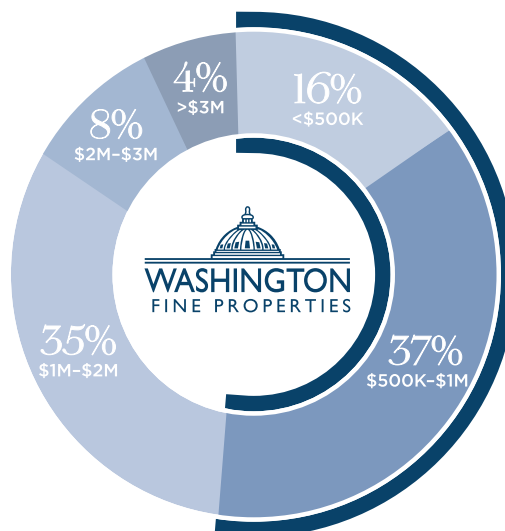


**HUNTINGTON TER** \$1,275,000  
8628 Garfield Street  
Bethesda, MD  
**Liz Lavette Shorb 301-785-6300**



**BEDFORDSHIRE** \$998,000  
6 Colebrook Court  
Potomac, MD  
**Delia McCormick 301-537-4703**  
**James Gregory 240-447-7701**

## REPRESENTING *ALL PRICE RANGES*



**53%** OF OUR BUSINESS  
IS UNDER \$1 MILLION