

Potomac ALMANAC

Rob Seidel of Potomac
rides to end Alzheimer's.

Ride to End ALZ and All Dementia

PAGE 4

Potomac Library To Close for Rest of 2022

PAGE 3

This Year's Sunflowers Are For Ukraine

PAGE 6

ATTENTION POSTMASTER:
TIME SENSITIVE MATERIAL.
REQUESTED IN HOME 5-5-22

PRSRRT STD
U.S. POSTAGE
PAID
EASTON, MD
PERMIT #322

REAL ESTATE, PAGE 2 ♦ KENNY LOURIE, PAGE 11

PHOTO CONTRIBUTED

MAY 4-10, 2022

ONLINE AT POTOMACALMANAC.COM

Potomac REAL ESTATE

March, 2022 Top Sales

IN MARCH, 2022, 45 POTOMAC HOMES SOLD BETWEEN \$3,700,000-\$341,000.

PHOTOS FROM BRIGHT MLS

5 10515 Tulip Lane — \$2,250,000

3 12204 Lake Potomac Terrace — \$2,410,000

2 10823 Lockland — \$2,750,000

1 10706 Riverwood Drive — \$3,700,000

4 10016 Bencross Drive — \$2,385,000

6 9901 Meriden Road — \$2,050,000

Address.....	BR	FB	HB	Postal	City.....	Sold Price...	Type.....	Lot AC.	Postal Code ...	Subdivision.....	Date Sold
1 10706 RIVERWOOD DR.....	5	..	5	...3POTOMAC	\$3,700,000	... Detached..	2.00.....	20854	POTOMAC VIEW ESTS	03/23/22
2 10823 LOCKLAND	7	...	7	...1POTOMAC	\$2,750,000	... Detached..	2.00.....	20854POTOMAC	03/15/22
3 12204 LAKE POTOMAC TER..	7	...	6	...1POTOMAC	\$2,410,000	... Detached..	2.20.....	20854LAKE POTOMAC	03/30/22
4 10016 BENTCROSS DR.....	5	...	6	...3POTOMAC	\$2,385,000	... Detached..	2.17.....	20854FALCONHURST	03/30/22
5 10515 TULIP LN.....	7	...	6	...2POTOMAC	\$2,250,000	... Detached..	1.96.....	20854	..POTOMAC OUTSIDE	03/08/22
6 9901 MERIDEN RD	6	...	6	...1POTOMAC	\$2,050,000	... Detached..	1.41.....	20854	..POTOMAC OUTSIDE	03/24/22
7 11301 GREENBRIAR PRESERVE LN	6	...	5	...1POTOMAC	\$1,800,000	... Detached..	0.83.....	20854	GREENBRIAR PRESERVE	03/09/22
8 11210 ALBERMYRTLE RD ...	6	...	5	...1POTOMAC	\$1,760,000	... Detached..	2.12.....	20854	DARNESTOWN OUTSIDE	03/31/22

COPYRIGHT 2022 MARKETSTATS FOR SHOWINGTIME. SOURCE: BRIGHT MLS AS OF MARCH 31, 2022.
[HTTP://WWW.CONNECTIONNEWSPAPERS.COM/NEWS/2022/APR/15/POTOMAC-HOME-SALES-MARCH-2022/](http://www.connectionnewspapers.com/news/2022/apr/15/potomac-home-sales-march-2022/)



The Potomac Library will close at 6 p.m. on Sunday, May 22, to undergo interior improvements.

Work during the closure will include replacement of flooring, new shelving, new service desk, painting, new furniture and a redesigned children's area.

Potomac Library Will Close for 8-10 Months

The Potomac Library will close at 6 p.m. on Sunday, May 22, to undergo interior improvements under the Library Refurbishment initiative. The Potomac Library, which is located at 10101 Glenolden Dr. in Potomac, will be closed for approximately eight to 10 months.

The project will include the replacement

of flooring, new shelving, a new service desk, painting, new furniture and a redesigned children's area. Work also will be performed to bring the building into compliance with the Americans with Disabilities Act.

"Physical construction for the refresh project at Potomac will begin in July; we are closing ahead of the construction start date

to complete the internal reorganization of collections and shelving," said MCPL Director Anita Vassallo.

"We look forward to resuming operations at the branch in early 2023, and hope customers will access services at nearby branches and continue to use our website while the facility is undergoing the refresh process."

For additional information regarding the closing, visit www.montgomerycountymd.gov/library. The website has details on the last date for book returns in the branch book drop and the last date for placement of holds for the Potomac Library.

For more information, contact Angelisa Hawes at 240-777-0022 or at angelisa.hawes@montgomerycountymd.gov.

Setting Energy Standards for Existing Buildings

Legislation setting Building Energy Performance Standards (BEPS) (Bill 16-21), signed into law May 2, will expand the County's benchmarking requirements by setting minimum energy performance standards for existing buildings.

This will reduce energy demand and carbon pollution from the built environment as Montgomery County tackles ambitious climate change goals. The County's Climate Action Plan calls for eliminating greenhouse gas emissions by 2035.

The County's Climate Action Plan calls for eliminating greenhouse gas emissions by 2035.

The new law expands the number of buildings covered by the County's existing Benchmarking Law to include additional County-owned, commercial and multifamily buildings and establish long-term standards for those buildings and require the use of less energy.

County Executive Marc Elrich signed the bill on Monday, which

was passed unanimously by County Council on April 19.

Energy use in the building sector is the largest contributor to greenhouse gas emissions in Montgomery County, representing almost 50 percent of total community-wide emissions. The standards will help to drive energy improvements and emission reductions in existing buildings.

In 2014, Montgomery established the first County-level benchmarking law for County-owned and commercial buildings that were 50,000 square feet and above to annually track and report building and energy performance to the County's Department of Environmental Protection.

This new BEPS law will expand the number of buildings covered to include commercial and multifamily buildings that are 25,000 gross square feet and greater. Montgomery County currently has more than 5,000 commercial and multifamily properties that cover more than 288 million square feet

of rentable building area. The County's commercial building stock is primarily made up of office, multifamily and retail buildings. Commercial buildings account for 26 percent of community-wide greenhouse gas emissions in the County.

Montgomery County's climate plan is one of the most ambitious in the nation for a local government. The details of the plan can be found at www.MontgomeryCountyMD.gov/climate.

For more information on BEPS, visit <https://www.montgomerycountymd.gov/green/energy/beps.html>.

Ride to End ALZ

Potomac man leads effort to bring national cycling event to the Metro Washington Region.

The Alzheimer's Association will hold its first ever Ride to End ALZ in the Nation's Capital on Sunday, May 15. More than 160 riders from Maryland, Virginia and the District of Columbia, as well as from states as far away as Texas, Minnesota and Hawaii, have registered for the inaugural cycling event. This joins a growing list of Ride to End ALZ events held across the country to raise funds and awareness to advance research toward the first survivor of Alzheimer's.

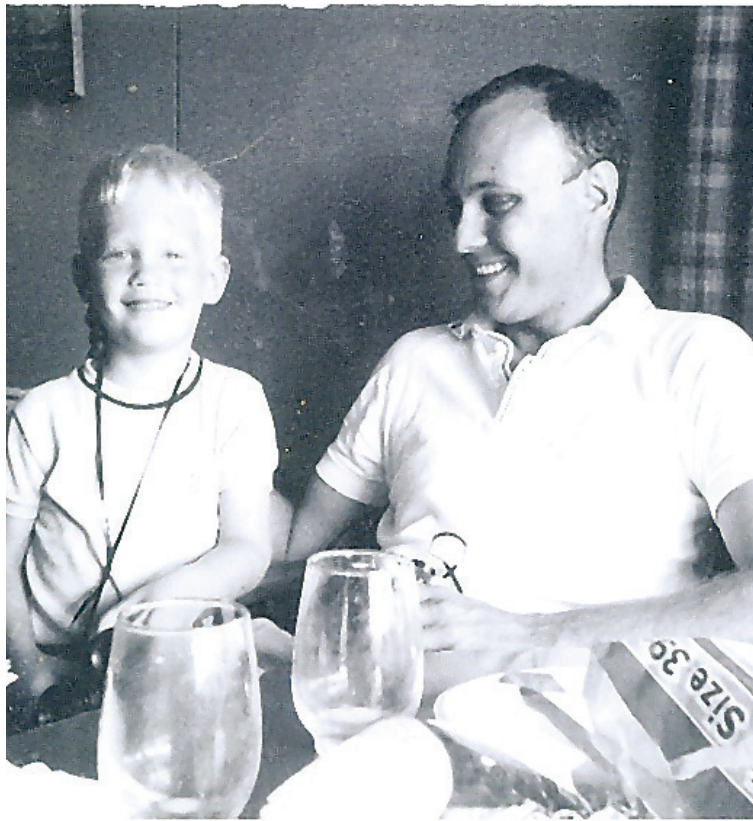
Potomac resident Rob Seidel is the co-chair of the volunteer Community Engagement Committee responsible for planning the new event. Seidel has participated in other Alzheimer's Association events, including Walk to End Alzheimer's and Ride to Remember, a local cycling event he started in 2016 with family and friends that is now rolling into the new Ride to End ALZ - Nation's Capital.

When asked why he was putting in the effort to launch the new event, Seidel said, "Simply put, I'm doing this for my dad. I lost him in 2018 after a 12-year decline into darkness. It was terrible. It's so hard to watch one of your heroes waste away like that. And candidly, I am riding for myself. Losing both my dad's mom and my dad to Alzheimer's ... well, the statistics are not in my or my brother's favor."

According to the Alzheimer's Association, family history is not necessary for an individual to develop Alzheimer's; however, research shows that those who have a parent or sibling with Alzheimer's are more likely to develop the disease than those who do not have a first-degree relative with Alzheimer's.

"A few years before my dad died, I went out to Colorado to see him," Seidel said. "He was in a good mood and we were at a picnic. Some karaoke came on, and I could see he was enjoying the music. Then John Denver's 'Country Roads' song came on, and though neither of us can carry a tune in a suitcase, we just started singing along. By the time the song was finished, we were both at full volume and smiling from ear to ear! I treasure that memory. So I'm determined to go the distance for all those affected by this disease, paying it forward with my time, my resources, and my pedal strokes."

The Ride to End ALZ will take place in Loudoun County, Va., with the start and finish at Morven Park



Rob Seidel as a child with his father.



Rob Seidel of Potomac rides to end Alzheimer's.

Ride to End ALZ - Nation's Capital joins Alzheimer's Association cycling fundraising program to support Alzheimer's, dementia research. Register for the Ride to End ALZ at alz.org/ride

in Leesburg. Check in opens at 6 a.m., with the ride starting at 7 a.m. Participants can choose a 25-mile, 45-mile, 70-mile, or 100-mile route through breathtaking coun-

tryside. The fully supported event will have rest stops along every route, as well as SAG (support and gear), breakfast, lunch and live entertainment.

PHOTOS CONTRIBUTED



Rob Seidel of Potomac with his father who died of Alzheimer's.

People can register for the Ride to End ALZ at alz.org/ride. Select the National Capital option to register for the event. All participants must be 13 years of age or older. Riders are required to make a registration donation to get started and agree to raise the fundraising minimum of \$500 in order to participate. The registration donation will be counted towards that minimum.

One hundred percent of proceeds from the Ride will support Alzheimer's research. As the largest nonprofit funder of Alzheimer's research, the Alzheimer's Association is committed to accelerating the global progress of new treatments, preventions and, ultimately, a cure. Learn more about research at alz.org/research.

Seidel hopes that the community will see the Ride as a great opportunity to have fun, bond together and raise much needed funds for research. "Just do it! For folks that

do not ride a lot, a 25 mile ride seems like a long way, but it really isn't," said Seidel. "You'll be riding with friends and likely in a group – so the time and miles pass quickly. And if you decide 10 miles is enough, that is okay, too. Together, we can end Alzheimer's!"

For more information on Ride to End ALZ Nation's Capital, visit alz.org/ride or contact Brenda Buchanan, director of the Ride at 512-572-0153 or at bbuchanan@alz.org.

About the Alzheimer's Association

The Alzheimer's Association leads the way to end Alzheimer's and all other dementia – by accelerating global research, driving risk reduction and early detection, and maximizing quality care and support. Our vision is a world without Alzheimer's and all other dementia. Visit alz.org or call 800-272-3900.

WWW.CONNECTIONNEWSPAPERS.COM



Carousel CARNIVAL

SAVE THE DATE

MAY 14, 2022 • 6:00 PM
GLEN ECHO PARK

Artwork by Joseph Craig English - www.josephcraigenglish.com

Glen Echo Park's Gala

Gala and Carousel Carnival. Saturday, May 14, 6 p.m. At Glen Echo Park, Glen Echo, Md. Glen Echo Park's Carousel Carnival will be a night of circus entertainers, an exquisite dinner in the Spanish Ballroom, a silent auction, cocktails, carousel rides, and more.

Glen Echo Park's Gala will celebrate the 20th anniversary of the Glen Echo Park Partnership for Arts and Culture and 101 years of the historic Dentzel Carousel.

The Friend of Glen Echo Park Award will be presented to the Honorable Nancy Kopp; the Puppet Co.'s Allan Stevens, Christopher Piper & Mayfield Piper will receive the Artist Award.

County Councilmember Andrew

Friedson will receive the Park's Advocacy Award. Congressman Jamie Raskin will serve as the event's Honorary Gala Chair. Frank Van Riper will serve as emcee for the evening.

The event raises essential funds to support Glen Echo Park's arts and cultural programs, and historic facilities. Each year over 350,000 people attend the Park's classes, social dances, family festivals, concerts, exhibitions, children's theater performances, and much more.

Individual and Corporate sponsorships are available, email Jilna Kothary, jkothary@glenechopark.org. Checks can be mailed to GEP-PAC, 7300 MacArthur Blvd, Glen Echo, MD 20812

The Glen Echo Park Partnership for Arts and Culture is a nonprofit 501(c)(3) organization. Contributions are tax-deductible to the fullest extent allowed by law. The Gala in the Park raises essential funds to support Glen Echo Park's arts and cultural programs and historic facilities. Each year over 350,000 people attend the Park's classes, social dances, family festivals, concerts, exhibitions, children's theater performances, and more.

❖ Reception in the Bumper Car Pavilion ❖ Dinner, Awards Presentation & Dancing in the Spanish Ballroom ❖ \$250 per person ❖ Creative Black Tie ❖ Proof of Covid 19 vaccination required.

Visit the website: <https://give-butter.com/carousalcarnival>.

BULLETIN BOARD

Submit civic/community announcements at ConnectionNewspapers.com/Calendar. Photos and artwork welcome. Deadline is Thursday at noon, at least two weeks before event.

SATURDAY/MAY 7

"An Evening with Strauss" Waltz Ball. 9 p.m. to midnight. At Glen Echo Park, 7300 MacAr-

thur Blvd., Glen Echo, MD. This special benefit dance for Glen Echo Park includes a Viennese Waltz lesson from 8 - 9 p.m., followed by a program of classical waltzes from 9 p.m. - midnight in the style of Olde Vienna with musicians Alexander Mitchell (violin), Chelle Fulk (viola/violin), Susan Brandt (flute), Dave Weisler (piano), Ralph Gordon (string bass).

Dancers will enjoy refreshments, dance cards, a Grand March and are encouraged to wear formal attire. In keeping with tradition, the wonderfully restored Dentzel Carousel will be open from 8 - 10 p.m. for dancers to enjoy rides (\$1.00 each). For more information, call Joan

SEE BULLETIN, PAGE 7

We Bring the Zoo to You!



SQUEALS N WHEELS

Traveling Petting Zoo

www.squealsonwheels.us

301-765-0270

We are licensed by the United States Department of Agriculture and Insured

jill@squealsonwheels.us



As usual every year at this time, The Connection calls for submissions to our Mother's Day photo gallery.

Mother's Day is Sunday, May 8.

This year we will continue to publish submissions through the May 18 edition. Photo submissions are due by Monday, May 16.

#Send photos of mothers, grandmothers, great-grandmothers, with children or without children in the photos. Please name everyone in the photo, the approximate date, describe what is happening in the photo and include your name, address, email address and phone number. We will not print your full address or contact information.

You can upload photos and information directly to www.connectionnewspapers.com/mothersday/ or email to editors@connectionnewspapers.com.

This is a fine time for submissions for our annual Father's Day galleries. Online at www.connectionnewspapers.com/fathersday/

THE CONNECTION | Alexandria Gazette Packet | Mount Vernon Gazette | Potomac ALMANAC

THE CONNECTION

Newspapers & Online

Special Connections Calendar 2022

Advertising Deadlines are the previous Thursdays unless noted.

MAY

5/4/2022.....Wellbeing
5/11/2022.....HomeLifeStyle
5/18/2022.....A+ Camps & Schools
5/25/2022.....Senior Living

JUNE

6/1/2022.....Wellbeing
6/8/2022.....HomeLifeStyle
6/15/2022.....A+ Camps & Schools
6/22/2022.....Senior Living
6/29/2022.....Summer Fun

For Print & Digital Advertising Information:
Please Call 703.778.9431 or email
advertising@connectionnewspapers.com

THE CONNECTION | Alexandria Gazette Packet | Mount Vernon Gazette | Potomac ALMANAC

West Montgomery County Citizens Association

VIRTUAL MEETING

Wednesday, May 11, 2022, 7:30 p.m. via ZOOM

<https://us02web.zoom.us/j/89424657439?pwd=b0tBdWl2Q3N3bkp5ckhvSU1qT1N4Zz09>

or call in with 301-715-8592 (Meeting ID = 894 2465 7439, Passcode: 511546)

A recording of this meeting, and hotlinks within the Newsletter, will be available on our website: www.WMCCA.org

SPEAKERS on MAY 11: Maryland Senator Brian Feldman

District 15 Delegate David Fraser-Hidalgo

Each year following the legislative session we invite our District delegation to update us on their work in the Maryland General Assembly. Their efforts to improve the lives of citizens in their District and throughout Maryland are always important. Please join the meeting and bring your interests and questions.

Fond Farewell to Loyal WMCCA Volunteer

President's Letter by Carol Van Dam Falk

We have been indebted to Peter Poggi, our ongoing volunteer webmaster who took us from having no online presence to providing an inviting, up-to-date home page with easy-to-use links on our newsletters, meetings, archive material, and more. Peter has uploaded all of our newsletters, important testimony, and other pertinent information without fail for more than 25 years. He also became involved as an activist on certain issues that were close to his heart, including one several years ago in which the head of Montgomery County's Department of Transportation proposed to straighten a stretch of Quince Orchard Road in North Potomac that is part of the County's prized Rustic Road network. MCDOT wanted to make it easier for truckers to pass through and may have been planning to link up Travilah and Quince Orchards with a second river crossing at the time. Peter, along with the late, beloved WMCCA Board member George Barnes, and I testified before the Planning Board in strong opposition to the proposal, arguing the windy nature of the Quince Orchard was a natural barrier to speeders, especially teenagers who often traversed that stretch of road at night as it was near Quince Orchard High School. The Planning Board agreed with us; Quince Orchard Road was left untouched.

We have good news to share on the search for a new WMCCA web administrator. Local resident Thomas Fahey has stepped up to the plate. Thomas is joining WMCCA in the capacity of volunteer webmaster beginning this month. At the same time, we are migrating from a decades-old web provider to a new one that has a more straightforward, modern design and will be easier to maintain. Thomas has had an evolving career, including posts focused on interacting with government agencies, 'neighborhood-level' community development, and software design. He recently returned to the Washington Metropolitan Area after spending



several years away, and happily lives with his family in a welcoming community near the Potomac River, not far from Old Angler's Inn.

We thank Peter Poggi for his dedication and service to WMCCA and look forward to our new chapter with Thomas Fahey.

2021 Water and Sewer Plan Update

SUBMITTED BY KEN BAWER

As of this writing, we are still waiting for the County Executive's office to transmit their updates to the Water and Sewer Plan to the County Council for a public hearing. We will object to continuation of the peripheral and abutting mains sewer policies and multiple "special rule" changes that are inconsistent with the Potomac Subregion Master Plan and Maryland Smart Growth Statutes and are designed to benefit specific property owners who are otherwise ineligible for sewer extensions.

Aside from the Water and Sewer Plan update, there is a property in the Palatine of Potomac neighborhood which is requesting a category change to allow sewer hook-up. Per the County Executive's office, "The applicant has proposed the provision of public sewer service for an existing residential lot along Centurion Way in Potomac, Maryland. The approval of public sewer service for the property requested is not consistent with Water and Sewer Plan sewer service policies or with 2002 Potomac Subregion Master Plan recommendations. This location is outside of the planned public sewer envelope in the Palatine of Potomac subdivision. The Potomac peripheral sewer service policy can allow for the consideration of public sewer service for some properties at the edge of the planned sewer envelope. However, properties at the edge of the Palatine subdivision are excluded from qualifying under this policy."

Amendments to County Forest Conservation Law Submitted by Ginny Barnes

On Thursday April 28, 2022 the Planning Board approved amendments that seek to add strength to the existing law and move

the County closer to achieving 'no net loss' of forest. A MoCo Forest Coalition consisting of staff and representatives from a number of civic and environmental organizations worked on developing the amendments for over a year. There was strong favorable public testimony at the hearing. The proposed changes are an improvement on the existing law but do not go as far as the MoCo Forest Coalition recommended. Their priority is to protect existing forest, not just replant what is destroyed for development. Existing forest stands are diminishing and it is nearly impossible to plant and nurture new forest, especially with the added stress of the expanding deer population, invasive species, and climate change. Here is the link to the Planning Board update:

<https://montgomeryplanning.org/planning-board/approves-proposed-changes-to-montgomery-county-forest-conservation-laws-to-achieve-no-net-loss-of-forest/>

Amendments will now be sent to the County Council where they could be strengthened.

Potomac Friends of the Library Dissolved ??

SUBMITTED BY GINNY BARNES

For 31 years our Potomac library has enjoyed the care of dedicated volunteers from our community that has enhanced programming, sponsored book sales, contributed money for library improvements, and even dressed as storybook characters for the annual Potomac Day parade. Not every County library has a Friends Chapter. Of the 21 Libraries, 15 have their own chapters. All are overseen by a nonprofit Montgomery County Friends of the Library. On March 19, 2022, without notice or discussion, the trustees dissolved all existing local chapters. In notifying chapters of the decision, a lack of fiscal responsibility by a few was cited as the primary reasoning. The stated solution being to centralize chapter functions, which means community members may not be able to volunteer in their own libraries but be assigned elsewhere. This is not what community is all about. If other chapters not as well functioning as others needed help, why not make that decision as a community of chap-

ters instead of doing away with all chapters?

I learned the value of our Chapter when I nominated them in 2019 for the Potomac Chamber of Commerce 'Citizens of the Year' Award' after discovering they'd never been nominated. The Chamber voted them the award and I was fortunate to be able to present it to the Potomac Chapter at the awards dinner. I've never met a more dedicated group — a group that defined 'community' here in Potomac. Up until that time, I'd only partaken of monthly book sales or the shelf in the lobby as I left after each visit. For me, as for many I'm sure, just this service was invaluable; putting books in the hands of many who cannot afford to buy from distributors of new books. There must be a better way to keep our libraries attractive to local volunteers as well as spreading services among the different chapters. The Board of Trustees needs to rethink such a rash decision.

2022 ELECTION OF WMCCA OFFICERS AND BOARD of DIRECTORS:

The election of the WMCCA Officers and Board of Directors will occur at our May 11th General Meeting. The Nominating Committee proposes the following slate of Officers and Directors to the membership for a vote. Nominations may also be made from the floor.

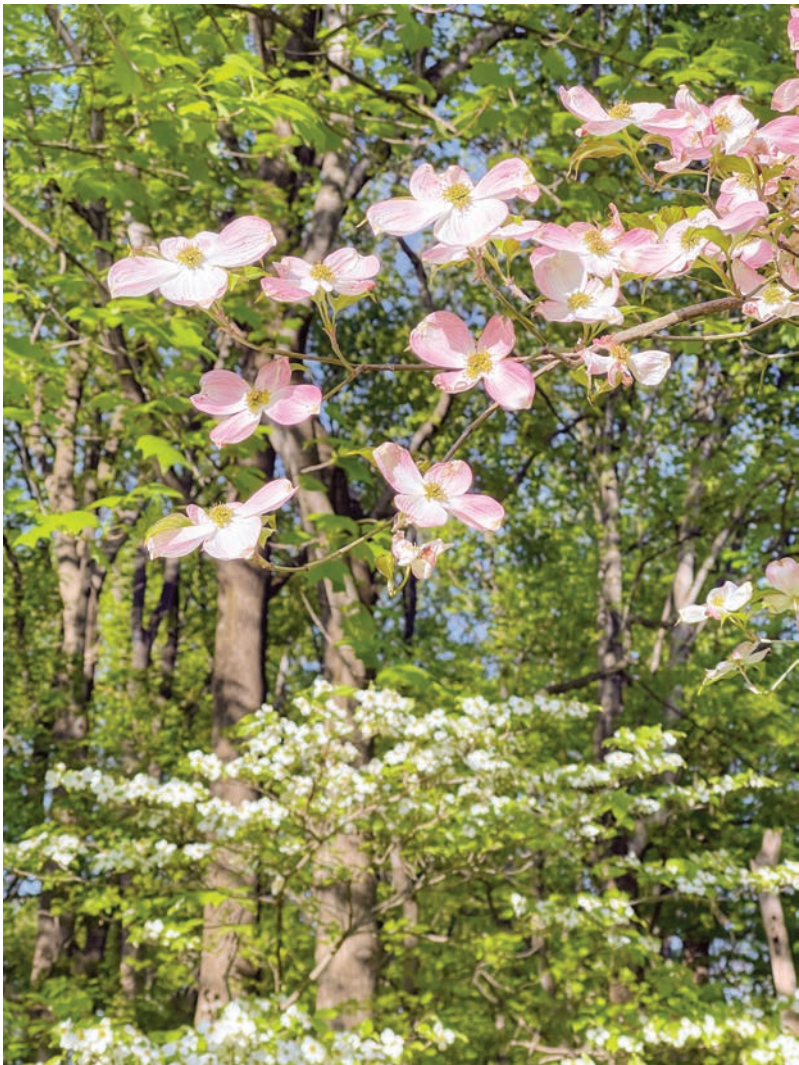
President: BARBARA BROWN
Treasurer: BARBARA HOOVER
Immediate past President: CAROL VAN DAM FALK
Secretary: KATHY PETITT
President Elect: SUSANNE LEE
Newsletter: NANCY MADDEN
Vice President: GINNY BARNES
Nominees for a two-year term: KEN BAWER
To serve 2nd Year of their two-year term (no action needed): THEODORA SCARATO

REMINDER: YOUR SUPPORT IS VITAL TO OUR CONTINUED WORK — PLEASE JOIN OR RENEW YOUR MEMBERSHIP FOR 2021-2022! As a member you will receive our monthly newsletter and notices of our monthly meetings (October thru May), and we'll alert you to issues that may impact you and fight with you to protect our "Green Wedge"

SPRING IN POTOMAC



Bee nestling into the flowers of a white azalea.



Dogwood blossoms, both pink and white, are long lasting, especially in cool weather.

BULLETIN BOARD

FROM PAGE 5
Koury at 202-238-0230 or Glen Echo Park at 301-634-2222, or go to www.Waltz-TimeDances.org.

MAY 7-8
VisArts' 10th Annual Rockville Arts Festival. 10 a.m. to 5 p.m. At Rockville Town Square. VisArts' 10th Annual Rockville Arts Festival will be held Saturday, May 7 and Sunday, May 8, 10 a.m.-5 p.m., in Rockville Town Square. The Festival will feature 130 fine artists and artisans from around the country, artisanal fare and food trucks, live music and dance performances, and art demonstrations. Join us in the Square and meet the Maryland artists whose work will be showcased at the Festival, including Mehrnaz Amirinia (Rockville), Limor Dekel (Rockville), Courtney Gillen (Silver Spring), Yolanda Prinsloo (Gaithersburg), and Rochel Roland's Joyful Bath Co. (North Bethesda).

VIRTUAL COMMUNITY FORUM
Montgomery County residents are invited to attend a virtual community forum from 7-8:30 p.m. on Wednesday, May 4, on a "Common Triage and Dispatch Protocol" that provides criteria for mobile crisis and outreach teams (MCOT) at the County's Crisis Center. At the forum, residents can provide comments on the protocol that will guide how staff responds to mental health crises with and without police presence. The forum will be held on the Teams Live platform and will be livestreamed on the County's Facebook page. Join the event at <https://bit.ly/commontriage>. Teams Live offers translation into multiple languages through closed captioning.

Department of Health and Human Services (DHHS) staff will introduce and explain the Common Triage and Dispatch Protocol, followed by an open forum for questions and comments. Speakers at the forum will be Dr. Raymond Crowel, director of DHHS; Marcus Jones, chief of the Montgomery County Police; Scott Goldstein, chief of the Montgomery County Fire and Rescue Service; Dr. Rolando Santiago, the DHHS chief of Behavioral Health and Crisis Services (BHCS); Dorne Hill, the DHHS senior administrator for crisis, intake and trauma services; and Beth Tabachnick, manager of the DHHS Crisis Center.

POTOMAC LIBRARY WILL CLOSE ON MAY 22 FOR REFRESH PROJECT
The Potomac Library will close at 6 p.m. on Sunday, May 22, to undergo interior improvements under the Montgomery County Public Libraries' award-winning Library Refurbishment initiative. The Potomac Library, which is located at 10101 Glenolden Dr. in Potomac, will be closed for approximately eight to 10 months. The project will include the replacement of flooring, new shelving, a new service desk, painting, new furniture and a redesigned children's area. Work also will be performed to bring the building into compliance with the Americans with Disabilities Act. For additional information regarding the closing, visit www.montgomerycountymd.gov/library. The website has details on the last date for book returns in the branch book drop and the last date for placement of holds for the Potomac Library.

SEE BULLETIN, PAGE 11

2nd Annual

ALEXANDRIA

OLD TOWN

Springtime Art festival

May 14th - 15th

Sat./Sun. 10am - 5pm

Outdoors at John Carlyle Square

100 John Carlyle St.

in Alexandria, VA

FREE ADMISSION



Annie Simcoe



Howard Alan Events

ArtFestival.com

561-746-6615



Mark your calendar for the fall show!

September 17th - 18th, 2022

Maryland to Dedicate This Year's Sunflower Planting for Ukraine

The Maryland Department of Natural Resources (DNR) will dedicate its sunflower plantings to the people of Ukraine this spring. Each year, the department plants about 130 acres of sunflowers on 15 wildlife management areas across 18 Maryland counties. Sunflowers are the national flower of Ukraine, which remains besieged by the Russian military.

The primary purpose of DNR's plantings is to provide a source of food for mourning doves, cardinals, chickadees, blue jays, finches and other wildlife species, after the plants mature and dry. Pollinating insects like bees and butterflies also benefit from the abundant nectar and pollen that sunflowers produce.

This year the plantings will serve a dual purpose by expressing solidarity with the Ukrainian people. Displaying the large yellow flower has become an important way for many people around the world to express unity and support for Ukrainians who have suffered the war's destruction and resisted Vladimir Putin's aggression against them.

<https://news.maryland.gov/dnr/2022/04/25/maryland-to-dedicate-this-years-sunflower-planting-for-ukraine/>

The sunflower fields on the McKee-Beshers Wildlife Management Area (WMA) are the closest to Potomac. The primary purpose for planting sunflowers on wildlife management areas is to provide a food source for mourning doves, as well as other wildlife species, after the plants mature and dry. Mourning doves are hunted at these fields during hunting season that traditionally begins on Sept. 1 and continues through early January.

A number of fields are planted each year, although two fields are designated as Dove Management Fields. These fields are located on River Road, east of Hunting Quarter Road, and on the corner of River Road and Sycamore Landing Road. The Dove Management Area fields have restricted times and days when hunting can occur during the month of September.

In addition to mourning doves, sunflowers and sunflower seeds are a favorite food source for a host of other songbirds, mammals and pollinators. Sunflowers



Sunflowers at McKee-Beshers Wildlife Management Area in 2021.

require pollination by insects, usually bees, to produce a seed crop. In turn, honey bees and many species of native bees benefit from the abundant nectar and pollen that sunflowers produce.

The many benefits of sunflow-

ers are lost when they are cut or trampled by people. These sunflowers are planted for the benefit of wildlife and regulations prohibit the cutting, destruction or removal of any plants from these areas. The public is welcome to

visit, admire and photograph the sunflowers in bloom. However, visitors must be responsible and ensure that their actions don't have negative consequences.

Wildlife Management Area Access:

McKee-Beshers WMA may be accessed any time of day with no overnight camping allowed. There is no fee or permit required to access the property.

How and when sunflowers are planted:

The techniques used to plant the sunflowers, and the sunflower variety planted, may change from year to year, as well as the number of acres planted and their locations.

Sunflowers are planted in late April or early May. Weather, seed variety, weed competition, soil condition and herbivore damage will all impact the time that it takes for the plants to bloom. With favorable conditions, the sunflowers will bloom in mid-July.

After the sunflowers are done blooming and seeds are mature, in early to mid-August, strips are mowed through the sunflowers to scatter the seeds on the ground where they are more accessible to mourning doves and other wildlife.

Area Regulations:

Destruction or removal of any plants (including sunflowers) is strictly prohibited.

Parking is only allowed in designated parking areas.

Do not block gates. Violators may be towed and ticketed.

Driving is only allowed on main roads (River Road, Hunting Quarter Road, and Sycamore Landing Road). Only authorized or emergency vehicles allowed behind gates.

Dogs are allowed, but must be leashed.

Wildlife Management Areas are trash-free. No trash cans are provided. Please take all trash with you.

Commercial activities are prohibited.

Tips for a successful visit:

McKee-Beshers WMA has no bathroom facilities, no benches and no picnic tables. Please plan accordingly.

McKee-Beshers WMA is home to ticks, mosquitoes and poison ivy. Long pants and shoes are recommended.

Please note that trails are unmanicured dirt or gravel that can be rough or muddy and may be unsuitable for strollers.

<https://dnr.maryland.gov/wildlife/Pages/publiclands/central/sunflowers.aspx>

Elrich Pledges 18 County Parcels for Affordable Housing

On Tuesday, County Executive Marc Elrich tweeted that he was “introducing a new opportunity for developers to create more affordable housing in Montgomery County. There are 18 County land parcels that we are offering to be developed into affordable housing, including deeply affordable housing. We must continue working together to create and to preserve housing that is dedicated as affordable to people at the lower income levels. The market will not build affordable units. We must be intentional, which is why we are making County properties available.

“Increasing the supply of affordable housing, protecting tenants from displacement, and maintaining the communities that residents have created requires that we leverage resources, in partnership with mission-focused landowners and developers, financial partners and service providers.”

Montgomery County Supports Affordable Housing to be Built Adjacent to St. Anne’s Episcopal Church in Damascus

The Montgomery County Department of Housing and Community Affairs (DHCA) participated in the financing to create affordable housing for seniors in Damascus on property adjacent to St. Anne’s Episcopal Church. The new apartment property will include 76 apartment units for residents ages 62 and over, all priced affordably. A groundbreaking ceremony was recently held for the project.

The affordable housing property will be located at 25100 Ridge Rd. in Damascus.

“So many of our older residents are on fixed incomes and we must continue to produce affordable, and deeply affordable, housing options for them,” said Montgomery County Executive Marc Elrich. “In working with St. Anne’s, and with other faith-based efforts, we will help leverage available land to support housing for people who earn about \$30,000 to \$50,000 per year — that is, 30 to 50 percent of the

area median. Similarly, we are offering County land parcels to be dedicated for housing that is affordable to people with lower incomes.

With 20,000 households in Montgomery County earning less than \$31,000 per year and paying more than half their income on rent, we must continue creating and preserving housing that is affordable to people at lower income levels.”

To support the construction, the County provided a \$2.5 million HOME loan and a Payment in Lieu of Taxes (PILOT) agreement. The loan and PILOT support affordability, with five units available at 30 percent of Area Median Income (AMI), five units at 50 percent of AMI, 63 units at 60 percent of AMI, and three units at 70 percent of AMI.

Other project financing includes \$10 million in Freddie Mac Financing; \$8.7 million in Low-Income Housing Tax Credit proceeds; \$2.5 million in State Rental Housing Works; and \$3.7 million in Mission First Loan/Deferred Developer Fee/Seller Financing. The total project development cost is \$27.4 million.

The 76-unit apartment property is located next to a Ride On Route 90 stop. When complete, the building will include a community and sitting room, fitness room, library/meeting room and bike storage. It will be developed with Energy Star HVAC systems; Energy Star windows; energy efficient lighting and plumbing fixtures; and compliance with National Green Building Standards.

The developers for the apartment community are St. Anne’s Community Development LLC and Mission First Development Corporation.

Montgomery County is applying every available policy tool and financial resource to help reduce housing cost burdens by increasing the number of affordable, rent-regulated housing units; providing rent supports; and preserving current affordable housing while protecting tenants from displacement.

For more information on Montgomery County’s housing program, see the DHCA Annual Report.



Deer have eaten the tops of the Mayapple plants leaving the single white flower exposed on several. The flower will turn into the Mayapple fruit, which is a favorite food of box turtles.

SPRING IN POTOMAC

Male
cardinal
in a dog-
wood
tree.



Here’s Jack in the Pulpit.

Be a Part of Mother’s Day Photo Gallery

As usual every year at this time, The Connection calls for submissions to our Mother’s Day photo gallery. Mother’s Day is Sunday, May 8. This year we will continue to publish submissions through the May 18th edition. Photo submissions are due by Monday, May 16, but now is the right time to submit your photos.

Send photos of mothers, grandmothers, great-grandmothers, with children or without children in the photos. Please name everyone in the photo, the approximate date, describe what is happening in the photo and include your name, address, email address and phone number. We will not print your full address or contact information.

You can upload photos and information directly using the form at <http://www.connectionnewspapers.com/mothersday/> or email to editors@connectionnewspapers.com



[connectionnewspapers.com](http://www.connectionnewspapers.com).

This is also a fine time for submissions for our annual Father’s Day galleries.

Submit them online at <http://www.connectionnewspapers.com/fathersday/>

Encore Creativity for Older Adults To Perform 15th Anniversary Concert

As many as 600 singers expected to celebrate milestone and honor its founder.

BY MARILYN CAMPBELL
THE CONNECTION

For the past 15 years, Jeanne Kelly, founder of Encore Creativity for Older Adults, has worked to give those over the age of 55 a chance to explore their musical talent and interests while building and maintaining friendships. It is that vision and entrepreneurial spirit that earned Kelly a spot on HelpAge USA's "60 over 60" list, which honors 60 Americans who are making significant contributions to society.

Kelly will be honored for her achievements next month when an estimated 600 Encore singers from Arlington, Alexandria, Fairfax and Montgomery County locally and virtually perform a concert to celebrate the organization's 15th anniversary.

"Our Encore choral programs offer a great challenge, we offer possibilities instead of problems, we help older adults reinvent themselves and their passions," said Kelly. "Our free community concerts are a valuable gift to the community."

Encore, a Maryland-based nonprofit organization, was borne out of what Kelly saw as a need for a non-audition, professionally run choral program for people [in] an age group she felt was underserved in the arts.

"Our Encore singers gain respect," she said. "As we age, it is so easy to lose respect. Encore presents our singers on major concert stages including Kennedy Center Concert Hall and Music Center at Strathmore. We keep our older singers engaged and noticed. We give them a purpose."

Though Kelly is aware of the impact that Encore has on the lives of its seniors, when she learned that she'd earned a spot on the 60 over 60 list, she was skeptical.

"When I started to read the names of the others, I really thought someone was playing a prank," she said. "To be on the same list as Dr. Anthony Fauci, Dolly Parton, Tom Hanks, Cindy McCain, and Cher was quite unbelievable."

Encore singers were not surprised by the fact that Kelly made the list. "Singing with Jeanne and under her direction was my therapy group when my Aunt was dying and I was her caregiver," said Betsy Kutscher, Chorale Master of Fairfax ENCORE Chorale who lives with

"Our Encore singers gain respect. As we age, it is so easy to lose respect. Encore presents our singers on major concert stages including Kennedy Center Concert Hall and Music Center at Strathmore."

— Jeanne Kelly, Founder, Encore Creativity for Older Adults

her husband in a retirement community in Ashburn, Va. "Once a week I went to sing and was totally away from stress in my life."

The concert is expected to be an uplifting joyful experience for all ages. "This music hopefully brings cherished memories to

our audience, a brief trip down memory lane, a smile or perhaps a tear," said Linda Carter who sings in the Alexandria Encore Chorale and Encore ROCKS Alexandria.

The repertoire, says Kelly, will include an eclectic mix of music.

"Our Sentimental Journey Singers, a chorus for those with early de-

mentia or Alzheimer's, will perform favorites such as The Way You Look Tonight by Frank Sinatra, and Yesterday by The Beatles," she said. "Our Encore Chorale repertoire will in-



PHOTO CREDIT: E. DAVID LURIA

Encore Creativity for Older Adults will present a concert to celebrate its 15th anniversary and to honor its founder, Jeanne Kelly. The concert is expected to feature as many as 600 singers from Encore program.



Jeanne Kelly, Founder, Encore Creativity for Older Adults was recently named to the HelpAge USA "60 over 60" list, honoring 60 Americans who are making significant contributions to society at the local, national or international level.

clude a Westside Story medley and the iconic tunes of George and Ira Gershwin.

Encore ROCKS will sing ROCK n ROLL hits from the 50s, 60s and 70s. "Singing in these grand venues [like] The Kennedy Center Concert Hall ... validates and elevates the experience," said Larry Halloran, Glen Echo Encore Chorale and Encore ROCKS at

To Go

Encore Creativity for Older Adults' 15th Anniversary Concert

Music Center at Strathmore in North Bethesda, Md., Saturday, May 14th at 3 p.m.

Admission is pay-what-you-wish. For tickets, visit: <https://www.strathmore.org/what-is-s-on/in-the-music-center/encore-creativity-15th-anniversary-celebration/>

the Westchester Conservatory. "We're not just cute old people killing time. We're performers displaying the fruits of fifteen weeks of intense technical effort and vocal joy."

"I hope that Strathmore concert-goers will enjoy an enveloping musical experience, close their eyes and revel in the sweet harmonies, sing and clap along with the ROCKS songs and then go home and sing even louder in their showers or with their car radios the next day," continued Halloran. "I hope some will think about joining Encore."

The concert will be held at 3 p.m. on Saturday, May 14th at the Music Center at Strathmore in North Bethesda, Md. For more information visit: <https://www.strathmore.org/what-is-s-on/in-the-music-center/encore-creativity-15th-anniversary-celebration/>

WWW.CONNECTIONNEWSPAPERS.COM

BULLETIN BOARD

FROM PAGE 7

LIBRARIES OFFER

WORKSHOPS FOR JOB SEEKERS

Montgomery County Public Libraries (MCPL) is offering online workshops and one-on-one sessions geared toward assisting job seekers and entrepreneurs throughout May. All workshops are free and offered virtually.

An internet connection and a device (such as a smartphone, tablet or computer) are required for participation.

Throughout May – Every Monday: 9:30-11:30 a.m. H.I.R.E. (Helping Individuals Reach Employment) Sessions

Sign up to meet virtually/confidentially one-on-one with a career counselor for advice and assistance with your job search. Register:

Monday, May 9: <https://mcpl.libnet.info/event/6540230>

Monday, May 16: <https://mcpl.libnet.info/event/6540231>

Monday, May 23: <https://mcpl.libnet.info/event/6540232>

Tuesday, May 17: 10-11:30 a.m. Introduction to Entrepreneurship

Are you just starting your entrepreneurial journey?

This workshop will cover the fundamentals of building a business and help you determine if you're ready to become a small business owner. Presented in partnership with the Maryland Women's Business Center. Register: <https://mcpl.libnet.info/event/6540240>

Tuesday/Thursday, May 17 and 19: 5:30-8 p.m.

LinkedIn Boot Camp for 45+ Job Seekers (Sessions I and II)

This popular two-session/two-day workshop focuses on both the mechanics and strategy of using LinkedIn as a tool to conduct a successful job search.

Register: <https://mcpl.libnet.info/event/5959831>

Wednesday, May 18: 10:30 a.m.-12:30 p.m. How to Apply for Jobs with Montgomery County Government

Find out everything you need to know about applying for jobs with Montgomery County Government.

Register: <https://mcpl.libnet.info/event/5822120>

Purple Line Spotlight on Library Resources Series

In collaboration with the Prince George's Memorial Library System and the Purple Line Corridor Coalition, MCPL is launching a new digital skills series, "The Purple Line Corridor to Success!" We feature four sessions in May focused on Adult Education and Career Exploration:

Wednesday, May 4: Noon-1:15 p.m. Purple Line: La

conexión con el éxito: Udey and Gale Courses Presented in Spanish. Top-rated courses and training programs in the areas of entrepreneurship, project management, sales, technology, personal development, and more! Register: <https://mcpl.libnet.info/event/6340510>

Wednesday, May 11: Noon-1:15 p.m. The Purple Line

Corridor to Success: Career Online High School

An online flexible career-based high school diploma program available FREE from the library. Register: <https://mcpl.libnet.info/event/6340509>

Tuesday, May 17: 6-7:15 p.m. The Purple Line Corridor

to Success: LinkedIn Learning

LinkedIn Learning provides thousands of certification courses in technology and business. After completion, a certificate can be uploaded to your LinkedIn profile. Register: <https://mcpl.libnet.info/event/6340838>

Tuesday, May 24: 6-7:15 p.m. The Purple Line Corridor

to Success: Brainfuse JobNow

Job Now provides live career coaching, award-winning resume creation tools, and helpful tips and tricks for landing the perfect career. Register: <https://>

mcpl.libnet.info/event/6341053

Program Contact: Adrienne Van Lare, adrienne.vanlare@montgomerycountymd.gov

SENIOR PLANET MONTGOMERY

FREE ONLINE CLASSES MAY 9-13

Senior Planet Montgomery, a technology training program designed for County learners 50 and older, is offering free online classes that focus on how to thrive at home. Classes, which are offered live via video conference, enhance a wide variety of life skills. Classes for Seniors May9-13 will include "Fitness Apps" and "Introduction to Social Media."

In addition to classes in English, two classes will be taught in Spanish, and one class will be taught in Mandarin. A variety of exercise classes also will be offered.

VIRTUAL COMMUNITY FORUM

Montgomery County residents are invited to attend a virtual community forum from 7-8:30 p.m. on Wednesday, May 4, on a "Common Triage and Dispatch Protocol" that provides criteria for mobile crisis and outreach teams (MCOT) at the County's Crisis Center. At the forum, residents can provide comments on the protocol that will guide how staff responds to mental health crises with and without police presence.

The forum will be held on the Teams Live platform and will be livestreamed on the County's Facebook page. Join the event at <https://bit.ly/commontriage>. Teams Live offers translation into multiple languages through closed captioning.

Department of Health and Human Services (DHHS) staff will introduce and explain the Common Triage and Dispatch Protocol, followed by an open forum for questions and comments.

Speakers at the forum will be Dr. Raymond Crowel, director of DHHS; Marcus Jones, chief of the Montgomery County Police; Scott Goldstein, chief of the Montgomery County Fire and Rescue Service; Dr. Rolando Santiago, the DHHS chief of Behavioral Health and Crisis Services (BHCS); Dorne Hill, the DHHS senior administrator for crisis, intake and trauma services; and Beth Tabachnick, manager of the DHHS Crisis Center.

POTOMAC LIBRARY WILL CLOSE

ON MAY 22 FOR REFRESH PROJECT

The Potomac Library will close at 6 p.m. on Sunday, May 22, to undergo interior improvements under the Montgomery County Public Libraries' award-winning Library Refurbishment initiative. The Potomac Library, which is located at 10101 Glenolden Dr. in Potomac, will be closed for approximately eight to 10 months.

The project will include the replacement of flooring, new shelving, a new service desk, painting, new furniture and a redesigned children's area. Work also will be performed to bring the building into compliance with the Americans with Disabilities Act.

For additional information regarding the closing, visit www.montgomerycountymd.gov/library. The website has details on the last date for book returns in the branch book drop and the last date for placement of holds for the Potomac Library.

LIBRARIES OFFER

WORKSHOPS FOR JOB SEEKERS

Montgomery County Public Libraries (MCPL) is offering online workshops and one-on-one sessions geared toward assisting job seekers and entrepreneurs throughout May. All workshops are free and offered virtually.

POTOMAC ALMANAC

www.PotomacAlmanac.com

Twitter @PotomacAlmanac

Newspaper of **Potomac**
A Connection Newspaper

An independent, locally owned weekly newspaper delivered to homes and businesses.

**1606 King Street
Alexandria, Virginia 22314**

Free digital edition delivered to your email box. Go to connectionnewspapers.com/subscribe

EDITOR & PUBLISHER

Mary Kimm
mkimm@connectionnewspapers.com
@MaryKimm

EDITORIAL

E-MAIL:
almanac@connectionnewspapers.com

CONTRIBUTING WRITERS

Carole Dell, Kenny Lourie,
Ken Moore

Contributing Photographers

Deborah Stevens, Carole Dell

Art/Design

Laurence Foong

Production Manager

Geovani Flores

ADVERTISING

For advertising information
sales@connectionnewspapers.com
703-778-9431

Debbie Funk

Display Advertising/National Sales
703-778-9444
debfunk@connectionnewspapers.com

David Griffin

Marketing Assistant
703-778-9431
dgriffin@connectionnewspapers.com

Jerry Vernon

Publisher
703-549-0004
jvernon@connectionnewspapers.com

CIRCULATION

circulation@connectionnewspapers.com

Potomac Almanac is published by Local Media Connection LLC

Five Time First Place Award-Winner Public Service

MDDC Press Association

Four Time Newspaper of the Year

An Award-winning Newspaper in Writing, Photography, Editing, Graphics and Design

Compartmentalize This



By KENNETH B. LOURIE

With all the physical problems and emotional challenges, a typical cancer patient undergoing treatment experiences, one's attitude is a significant contributor to the eventual outcome. My approach has been to never let the mental anguish and disappointment in my presumptive adjusted life expectancy (I was originally diagnosed as "terminal." Now I'm not really classified since I'm in a rather unique situation. My current diagnosis of papillary thyroid cancer stage IV is not usually a "terminal" condition. However, due to a misdiagnosis, my thyroid cancer has progressed to the point where it's not nearly as "friendly" as it could have been. And by 'friendly,' I mean curable as papillary thyroid cancer is often called "the friendly cancer" due to its positive prognosis. Right now, I would say I'm precarious more than "terminal" though life goes on without too much ado/ negative effect) overwhelm me. In short, I still believe (certainly hope) I'm in it for the long haul.

And being a cancer patient with or without non-small cell lung cancer stage IV (my original diagnosis) is indeed a long haul. As discussed in a previous column: "The Cancer Effect," there are innumerable and ongoing appointments and conditions making it difficult for one to ignore the very real fact that I have cancer and one that, due to years of mistreatment, the cancer has imbedded itself in my collarbone and as such, turned a curable form of cancer into an incurable one. Moreover, one whose treatment is simple enough (after having a thyroidectomy), one pill a day and no infusions. But a pill whose window of effectiveness ends in Sept. '23, three years after I started the regimen for papillary thyroid cancer (according to current medical data) and for which there's no better available medication waiting in the wings. Granted, medicine isn't arithmetic, and my window may be open longer – or shorter. Nevertheless, if I allow myself to think about it, I don't likely have left nearly as much life as I had long anticipated. But I don't think about it, and that's the point of this column.

Obviously, one can't ignore the fact that he or she has cancer. There are constant reminders; in how you feel, how you think, how you look, how you're reacted to by others and how you integrate all your cancer demons into something like a manageable routine. Somehow, it all must become normal and no big deal, and just another day at that. If you let its abnormality define and/or control your life, then cancer wins and maybe even makes you sicker than your physical condition would otherwise warrant.

Respecting that cancer is in and of itself, bad enough (physically), I'm not going to make it worse mentally by "woeing" is me and therein likely exacerbate my symptoms, further weaken my immune system, and much sooner rather than later, suffer severe consequences as a result.

My enduring philosophy: "I have cancer. So what?!"

Kenny Lourie is an Advertising Representative for The Potomac Almanac & The Connection Newspapers.

CLASSIFIED

WWW.CONNECTIONNEWSPAPERS.COM

TO ADVERTISE IN THIS PAPER, CALL BY MONDAY 11:00 AM 703-778-9411

Sign up for FREE DIGITAL SUBSCRIPTION to all of our papers
www.connectionnewspapers.com/subscribe

Announcements

GARDENER

Energetic gardener, Speaks French & English. Spring Cleanup, weeding, planting, edging, mulching, maintenance. Excellent Potomac references. **301-980-8258**

POTOMAC PIZZA®

www.potomacpizza.com



CHEVY CHASE

COLLEGE PARK

MIDDLE RIVER

POTOMAC

TRAVILLE

**ALWAYS
FREE
DELIVERY!**

. CURBSIDE PICK UP .

. CONTACT-FREE DELIVERY .